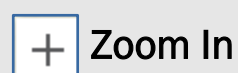
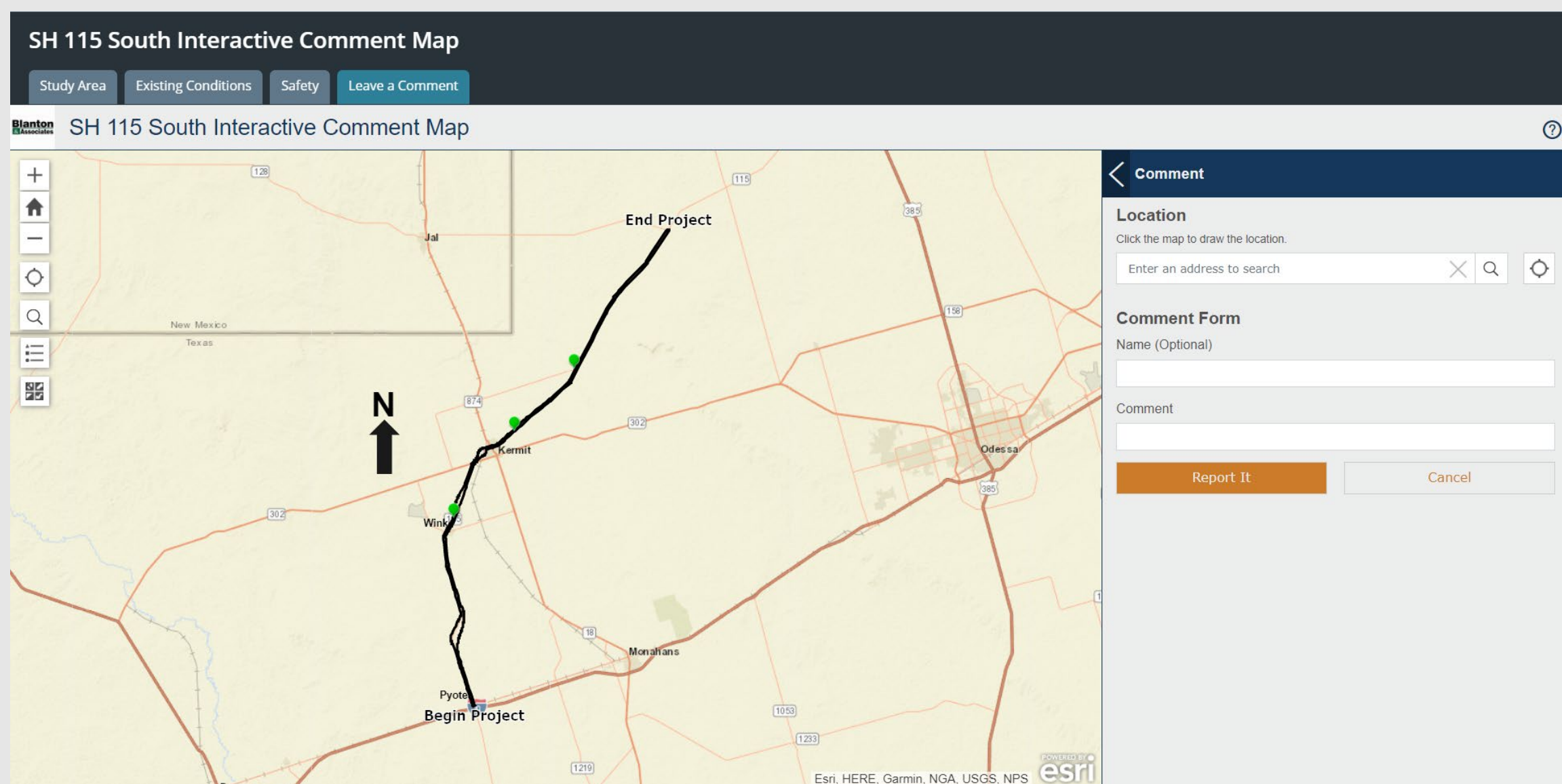




## WE WANT YOUR INPUT

Your comments are important and will help TxDOT understand your interests, concerns and needs within the proposed project study area. A four-part interactive mapping tool has been developed to gather your comments.

- **Study Area Tab** - allows you to review the overall proposed project study area.
- **Existing Conditions Tab** - allows you to review existing conditions data.
- **Safety Tab** - allows you to review existing safety data.
- **Leave a Comment Tab** - allows you to provide comments about specific locations or issues that you want to make TxDOT aware of.



Zoom In



Return to original map extent



Zoom Out



Open Instructions



Map Legend



Change Basemap

To leave a comment, please follow these steps:

- 1) Click on the “Leave a Comment” tab.
- 2) Click the orange **“click here to submit comment”** located in the right-side panel.
- 3) Either click on the map to drop a point or use the Location tool to search for an address.
- 4) Please leave a detailed comment within the comment box.
- 5) Once your comment is completed, click **“Report It”** to send your comment to TxDOT for review.