

Welcome

Virtual Public Meeting

SH 176 East

From FM 1788 in Andrews County to
I-20 in Howard County

5 p.m. Wednesday, Oct. 26, 2022

CSJs: 0548-01-050, 0548-02-038, & 0548-04-024



[Click to Sign In](#)

Why am I here?

- Learn about the project
- Provide your input on the proposed project

The Texas Department of Transportation, or TxDOT, welcomes you to the second Virtual Public Meeting for the SH 176 East Project. We appreciate you taking the time to view this information. Please click the button to sign in and let us know that you participated.

End the Streak



HELP
#EndTheStreakTX
End the streak of daily deaths on Texas roadways.

TxDOT.gov (Keyword: #EndTheStreakTX)



#EndTheStreakTX Toolkit



SH 176 East Virtual Public Meeting

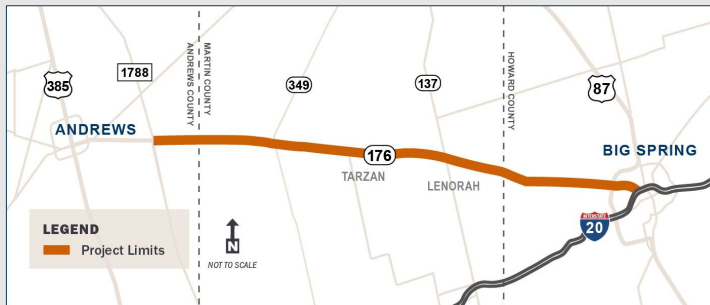
November 7, 2000, was the last deathless day on roadways in Texas. That means for nearly 22 years, at least one person has died every single day. We all have a part to play to change that. This message is that reminder – to End the Streak of deaths on Texas highways. We need drivers and passengers to act more responsibly and help us reach our goal of zero deaths by 2050. Texans can play a major role in ending fatal crashes with a few simple driving habits: wear seatbelts, drive the speed limit, put away the phone and other distractions, and never drive under the influence of alcohol or drugs. So please do your part and share this message with your friends and family.

Project Overview



SH 176 from FM 1788 to I-20

- Proposed improvements along approximately 53 miles through Andrews, Martin & Howard counties
- SH 176 is part of the Texas Highway Freight Network
- This corridor serves as a critical transportation link for the energy sector
- The rise in energy production has brought a large increase in truck traffic, impacting efficiency of travel and resulting in a significant increase in crashes



SH 176 East Virtual Public Meeting

This project focuses on the segment of SH 176 from FM 1788 east of Andrews to I-20 in Big Spring. This portion of the roadway is approximately 53 miles in length and runs through Andrews, Martin and Howard counties.

SH 176 is a part of the Texas Highway Freight Network and serves as a critical link for the energy sector. Over the last several years, the rise in energy production has brought a large increase in truck traffic, which has impacted the efficiency of travel and resulted in more frequent crashes along the roadway.

Project Goals



The goals of the proposed project are to improve safety and mobility along the SH 176 Corridor.

72%
INCREASE IN TRAFFIC
2015-2019

291
CRASHES
2017 - 2021

Proposed improvements in this section will improve traffic flow and provide safer conditions for current and projected volumes of traffic.

32%
TRUCK TRAFFIC

8
FATALITIES

90%
TRAFFIC INCREASE
EXPECTED OVER NEXT
20 YEARS

46%
INTERSECTION
RELATED



SH 176 East Virtual Public Meeting

The goals of the proposed project are to improve safety and mobility along the SH 176 Corridor.

Between 2015 and 2019, there was a 72% increase in daily traffic on this segment of SH 176. Of that traffic, 32% were trucks. Traffic in this section is expected to increase by 90% in the next 20 years.

Between 2017 and 2021, there were 291 crashes and eight fatalities reported along this segment of SH 176. Of these crashes, 46% were intersection related.

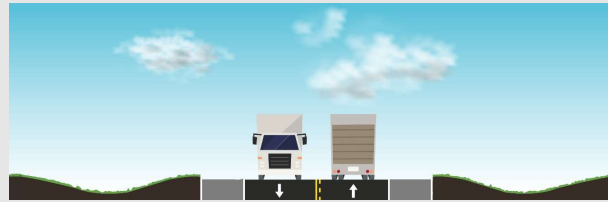
Proposed improvements in this section would improve traffic flow and provide safer conditions for current and projected volumes of traffic.

Proposed Improvements



Current Configuration

- Widen to a four-lane divided highway separated by a median with shoulders on either side of travel lanes
- Construct grade separated interchanges at SH 349 & SH 137



Proposed Configuration



SH 176 East Virtual Public Meeting

The road is currently a two-lane undivided highway with shoulders on each side.

To improve efficiency and enhance safety along SH 176, proposed improvements would include widening the roadway to a four-lane divided highway with two lanes in each direction, shoulders, and a center median with turn lanes and median openings to accommodate turning traffic.

Current plans also include constructing grade separated interchanges, or overpasses, at SH 349 and SH 137.

Alternatives Development & Evaluation



- Identified Study Area
- Prepared Environmental Constraints Map
- Developed and analyzed three Build Alternatives and the No-Build Alternative
- Completed an Alternative Evaluation Matrix
- Identified the Proposed Preferred Alternative

SH 176 East Virtual Public Meeting

After identifying project goals and proposed typical sections, the project team identified a Study Area that included 500 feet on either side of the SH 176 center line. The Team then developed an Environmental Constraints Map of the study area and used this to identify three build alternatives that met project goals.

A North Alternative considered expanding the roadway to the north, a South Alternative considered expanding the roadway to the south, and a Hybrid Alternative considered expanding to either side to minimize or avoid potential impacts.

Environmental Considerations



Environmental Documentation will be prepared in accordance with the National Environmental Policy Act (NEPA).



Social & Community Impacts



Air Quality



Biological Resources



Historic & Archaeological Resources



Water Resources



Hazardous Materials

The environmental review, consultation, and other actions required by applicable Federal environmental laws for this project are being, or have been, carried-out by TxDOT pursuant to 23 U.S.C. 327 and a Memorandum of Understanding (MOU) dated December 9, 2019, and executed by FHWA and TxDOT.

SH 176 East Virtual Public Meeting

As this project is being developed, TxDOT is evaluating the potential impacts to the environment in accordance with the National Environmental Policy Act. Those evaluations include study of community impacts, air quality, biological resources such as wildlife and vegetation, historical resources, water resources and drainage, and the presence and location of hazardous materials. Details of environmental constraints in the project limits are included on the interactive map linked on the public meeting web page and on the “How to Comment” public meeting exhibit.

Evaluation Matrix



Evaluation Criteria	No Build Alternative	North Alternative	South Alternative	Hybrid Alternative
Meets Project Goals (Mobility & Safety)	No*	1	1	1
Oil Infrastructure Impacts		2	3	1
Pipeline Impacts		3	2	2
Community Impacts		3	3	1
Structure Impacts		3	3	2
Cultural Resources Impacts		1	1	1
Potential Wetland Impacts		1	2	2
Threatened & Endangered Species Habitat Potential Impacts		2	2	2
Total		16	17	12

* The No Build did not meet the Project Goals, but has been considered for baseline comparison

- 1 Fewest potential impacts (most desirable)
- 2 Moderate potential impacts (less desirable)
- 3 Most potential impacts (least desirable)

SH 176 East Virtual Public Meeting

The three alternatives, along with a No Build option, were compared and ranked in an Evaluation Matrix using engineering and environmental evaluation criteria including, how well the alignment met project goals, as well as potential impacts to oil and gas infrastructure, community facilities, residential and commercial structures, cultural resources, wetlands, and threatened and endangered species habitats.

The options were ranked on a one to three scale, with one representing the fewest potential impacts, two representing moderate potential impacts, and three representing the most potential impacts.

Based on analysis of the options, the hybrid alternative results in the fewest impacts and is the most desirable of the four options. The No Build Alternative does not meet project goals of improving safety and mobility but will be considered as this project moves forward as a baseline for comparison. TxDOT encourages comments on the preferred Hybrid Alternative, which is shown on the interactive map.

Right of Way



Proposed Right-of-Way (ROW) impacts include:

- Approximately 638 acres of new ROW
- 2 residential displacements
- 7 non-residential displacements

ROW Acquisition Resources:

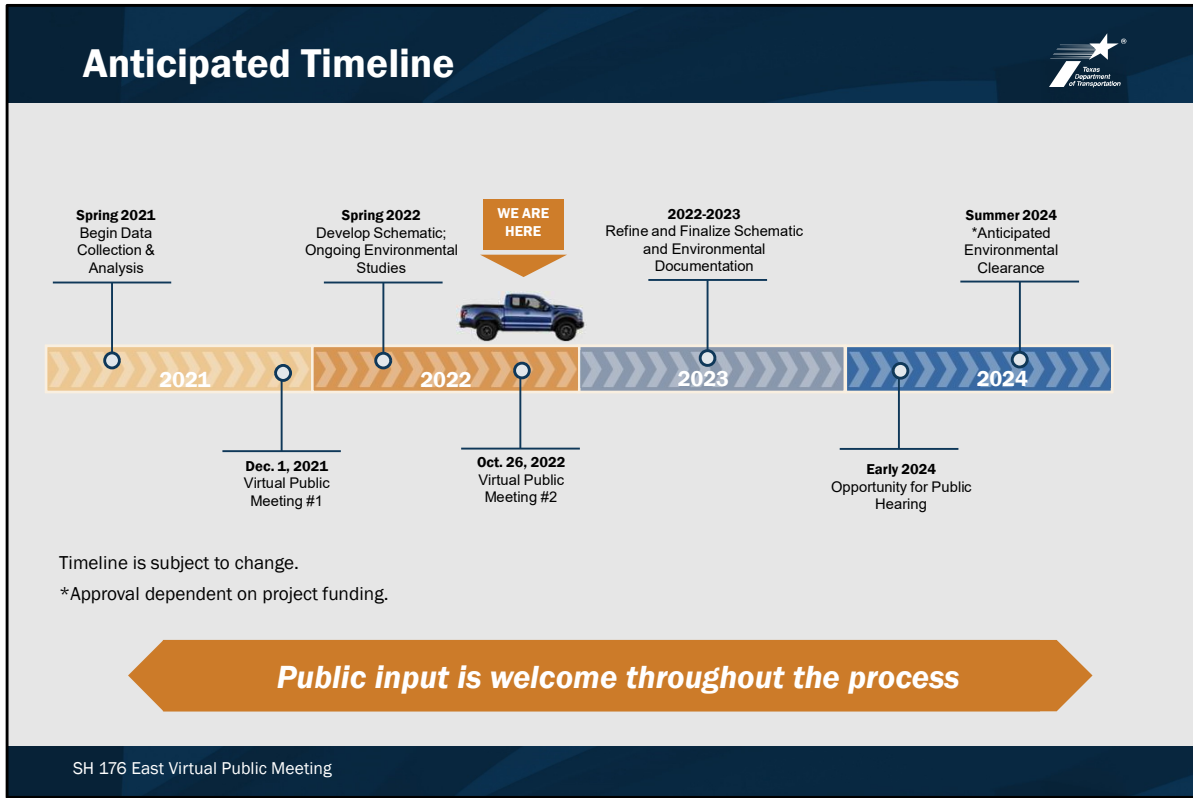
- Right of Way – Overview
- Landowner’s Bill of Rights
- Relocation Assistance
- State Purchase of Right of Way



[Click here for ROW Resources](#)

To improve SH 176, TxDOT will need to acquire additional right of way throughout the corridor. Proposed improvements would require approximately 638 additional acres of right of way and would potentially displace 2 residences and 7 non-residential structures.

Additional information about the ROW acquisition process can be found by clicking below or on the public meeting webpage.



The project team will continue refining the design and environmental evaluations of the preferred alignment through 2024. TxDOT will provide an opportunity for a public hearing and the project is anticipated to be eligible for environmental clearance in late 2024. The project timeline is subject to change and environmental approval is dependent on project funding.

TxDOT does not currently have funding available for right of way acquisition or construction of this project therefore a timeline for moving forward with these phases has not been determined.

How to Provide Comments



Your comments and questions are welcome. To submit an official comment for the meeting report, please use one of the following methods:



Email
SH176East@cdandp.com



SH 176 East Project Team
PO Box 5459
Austin, TX 78763



Interactive
map

All comments must be received or postmarked by Friday, Nov. 11, 2022, to be included in official meeting documentation.

The environmental review, consultation, and other actions required by applicable Federal environmental laws for this project are being, or have been, carried-out by TxDOT pursuant to 23 U.S.C. 327 and a Memorandum of Understanding (MOU) dated December 9, 2019, and executed by FHWA and TxDOT.

SH 176 East Virtual Public Meeting

Your comments are an important part of developing this project, and there are several ways you can share your input with TxDOT and the project team.

Click the email icon to send us an email.

Click the mailbox icon to print and mail a comment form.

Click the map icon to add a comment to our interactive map.

You are welcome to share comments at any point during this process, but comments must be received or postmarked by Friday, Nov. 11, 2022 to be included in the virtual public meeting report.