

Welcome

Virtual Public Meeting

SH 176 East

From FM 1788 in Andrews County to
I-20 in Big Spring

Wednesday, Dec. 1, 2021, 5 p.m.

CSJs: 0548-01-050, 0548-02-038, & 0548-04-024

Why am I here?

- Learn about the project
- Provide your input on the proposed project

SH 176 East Virtual Public Meeting

Slide 1 - Welcome

The Texas Department of Transportation, or TxDOT, welcomes you to the Virtual Public Meeting for the SH 176 East Project. We appreciate you taking the time to view this information. Please click the link to sign in and let us know that you participated.

Project Overview



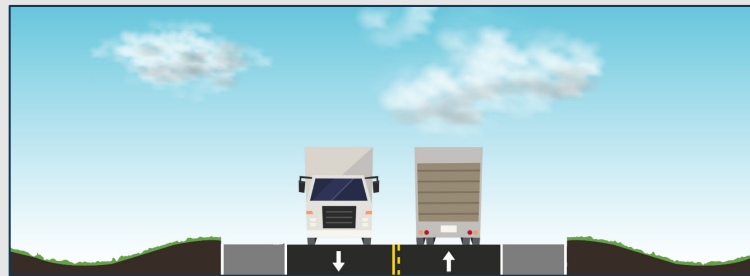
Project Location

- SH 176 From FM 1788 to I-20
- Approximately 53 miles



Current Configuration

- Two-lane undivided roadway
- 120 feet existing ROW
- 13-foot lanes with 8-foot shoulders



SH 176 East Virtual Public Meeting

Slide 2 – Project Overview, Pt. 1

In this meeting, we will focus on the segment of SH 176 from FM 1788 east of Andrews to I-20 in Big Spring. This portion of the roadway is approximately 53 miles in length and runs through Andrews, Martin and Howard Counties. The road is currently a two-lane undivided highway with 13-foot lanes in each direction and 8-foot shoulders on each side. The width of the right of way along the corridor is typically 120 feet.

Project Overview



- SH 176 is part of the Texas Highway Freight Network
- This corridor serves as a critical transportation link for the energy sector
- The rise in energy production has brought a large increase in truck traffic, impacting efficiency of travel and resulting in a significant increase in crashes.



SH 176 East Virtual Public Meeting

Slide 3 – Project Overview, Pt. 2

SH 176 is a part of the Texas Highway Freight Network and serves as a critical link for the energy sector. Over the last several years, the rise in energy production has brought a large increase in truck traffic, which has impacted the efficiency of travel and resulted in more frequent crashes along the roadway.

Traffic Volumes: 2015 - 2019



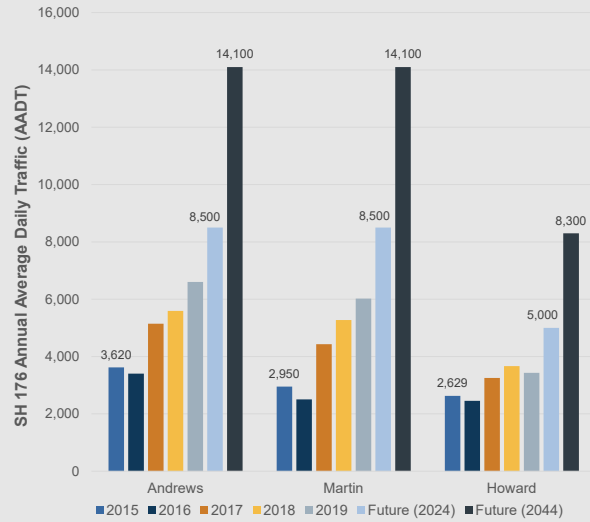
5,300
VEHICLES PER DAY
2019

32%
TRUCK TRAFFIC

17%
AVERAGE ANNUAL
INCREASE 2015-2019

15%
INCREASE IN TRUCK
TRAFFIC 2015-2019

127%
PROJECTED TRAFFIC INCREASE
2019 - 2044



Note: AADT based on Texas Department of Transportation Statewide Planning Map (AADT and future traffic and Percent Truck layers)

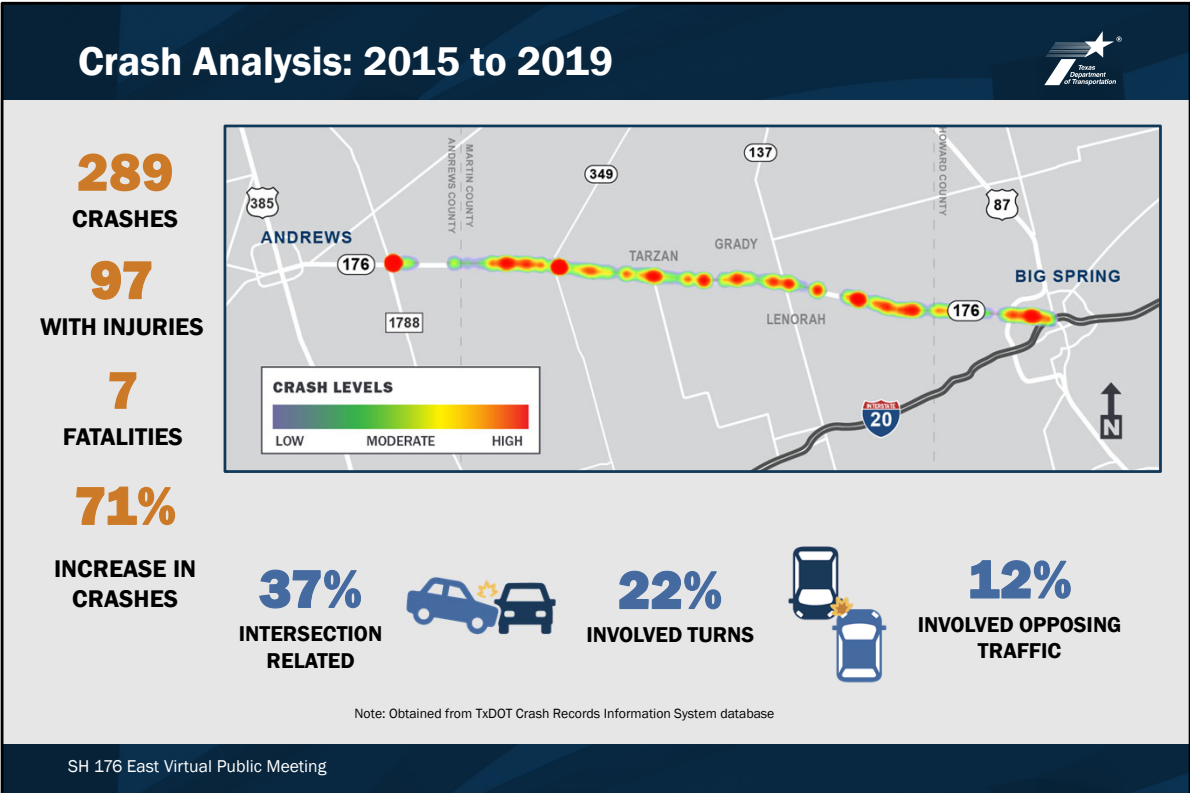
SH 176 East Virtual Public Meeting

Slide 4 - Traffic Volumes

In 2019 there was an average of over 5,300 vehicles traveling this segment of SH 176 each day. Of that traffic, 32% are trucks.

Between 2015 and 2019 traffic increased by an average of 17% each year and truck traffic has increased by 15%.

Traffic volume projections over the next 25 years show continued increase with an estimate of more than 14,000 vehicles per day in 2044.



Slide 5 – Crash Analysis: 2015 to 2019

With this additional traffic, the occurrence of crashes has also increased. Between 2015 and 2019 there were 289 crashes reported along this segment of SH 176. 97 involved injuries and 7 were fatal. This represents a 71% increase in crashes through the corridor.

Of these crashes, 37% were intersection related, 12% involved opposing traffic, and 22% involved turning traffic.

Improvement Concept



Widen to a four-lane divided highway separated by a median with shoulders on either side of travel lanes.



Improvements would enhance roadway safety and provide the infrastructure to support the growing transportation demand and economic opportunity in the Permian Basin.

SH 176 East Virtual Public Meeting

Slide 6 – Improvement Concept

To improve efficiency and enhance safety along SH 176, current concepts consist of widening to a four-lane divided highway with two lanes in each direction, a center median, and shoulders on either side of the travel lanes. This configuration will allow for safer travel and provide the infrastructure to support the growing transportation demand and economic opportunity in the Permian Basin.

Environmental Considerations



Environmental Documentation will be prepared in accordance with the National Environmental Policy Act (NEPA).



Social & Community Impacts



Air Quality



Biological Resources



Historic & Archaeological Resources



Water Resources



Hazardous Materials

The environmental review, consultation, and other actions required by applicable Federal environmental laws for this project are being, or have been, carried-out by TxDOT pursuant to 23 U.S.C. 327 and a Memorandum of Understanding (MOU) dated December 9, 2019, and executed by FHWA and TxDOT.

SH 176 East Virtual Public Meeting

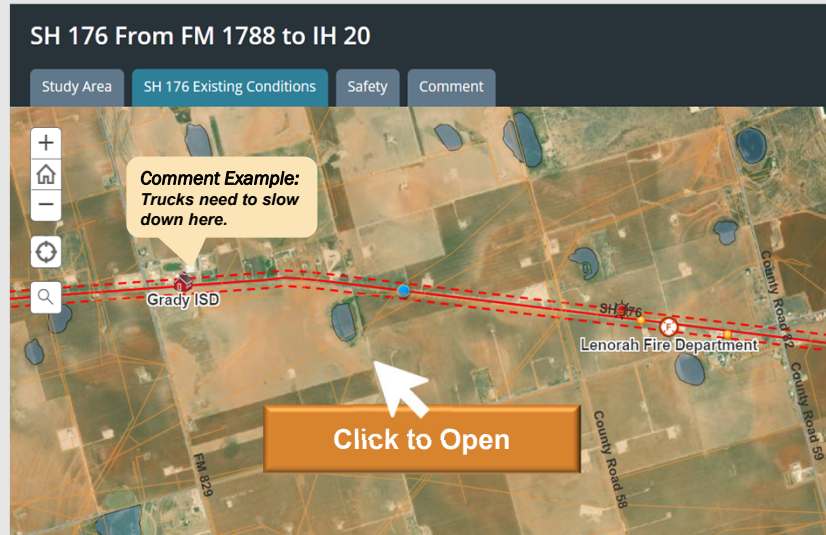
Slide 7 – Environmental Considerations

As this project is developed, TxDOT is evaluating the potential impacts to the environment in accordance with the National Environmental Policy Act. Those evaluations include study of community impacts, air quality, biological resources such as wildlife and vegetation, historical resources, water resources and drainage, and presence and location of hazardous materials.

Interactive Map



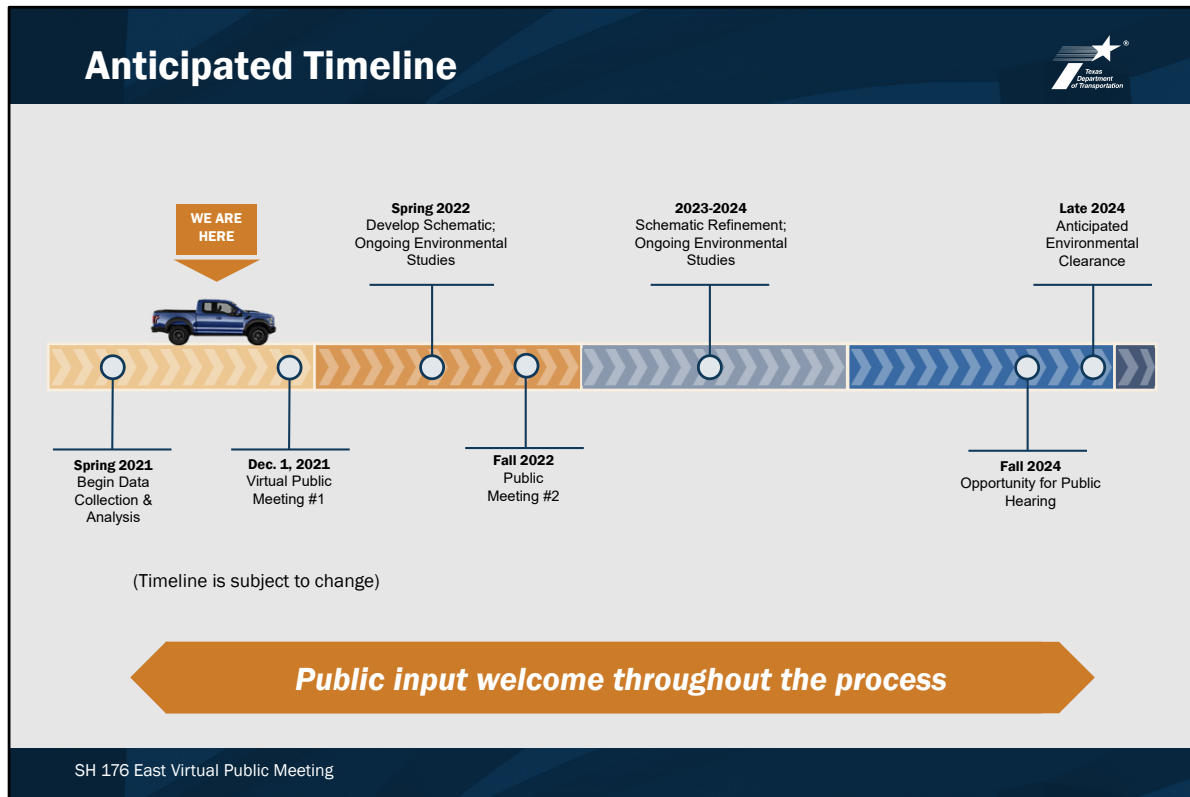
Click the map image to open our interactive map and add your comments.



SH 176 East Virtual Public Meeting

Slide 8 – Interactive Map

TxDOT has already begun identifying and mapping initial environmental considerations. Click the link to our interactive map to view environmental features and add your comments in specific locations. You will find additional instructions on how to comment on the map once you follow the link.



Slide 9 – Anticipated Timeline

Our team began environmental analysis and conceptual design this year and will develop initial roadway concepts and design alternatives for further evaluation into next year. We will share those concepts at the second public meeting next fall and continue with refinement and environmental evaluations through 2024. We will have an opportunity for a public hearing and anticipate environmental clearance in late 2024.

Please note, this timeline is subject to change, and we will share updates on progress and developments through the project web page.

How to Provide Comments



Your comments and questions are welcome. To submit an official comment for the meeting report, please use one of the following methods:



Email
SH176East@cdandp.com



SH 176 East Project Team
PO Box 5459
Austin, TX 78763



Interactive
map

All comments must be received or postmarked by Friday, Dec. 17, 2021 to be included in official meeting documentation.

SH 176 East Virtual Public Meeting

Slide 10– How to Provide Comments

Your comments are an important part of developing this project, and there are several ways you can share your input with TxDOT and the project team.

Click the email icon below to send us an email

Click the mailbox icon below to print and mail a comment form

Click the map icon below to add a comment to our interactive map.

You are welcome to share comments at any point during this process, but comments must be received or postmarked by Friday, Dec. 17, 2021 to be included in the virtual public meeting report.