

Welcome

Why am I here?

Virtual Public Meeting

Wednesday, Aug. 18, 2021

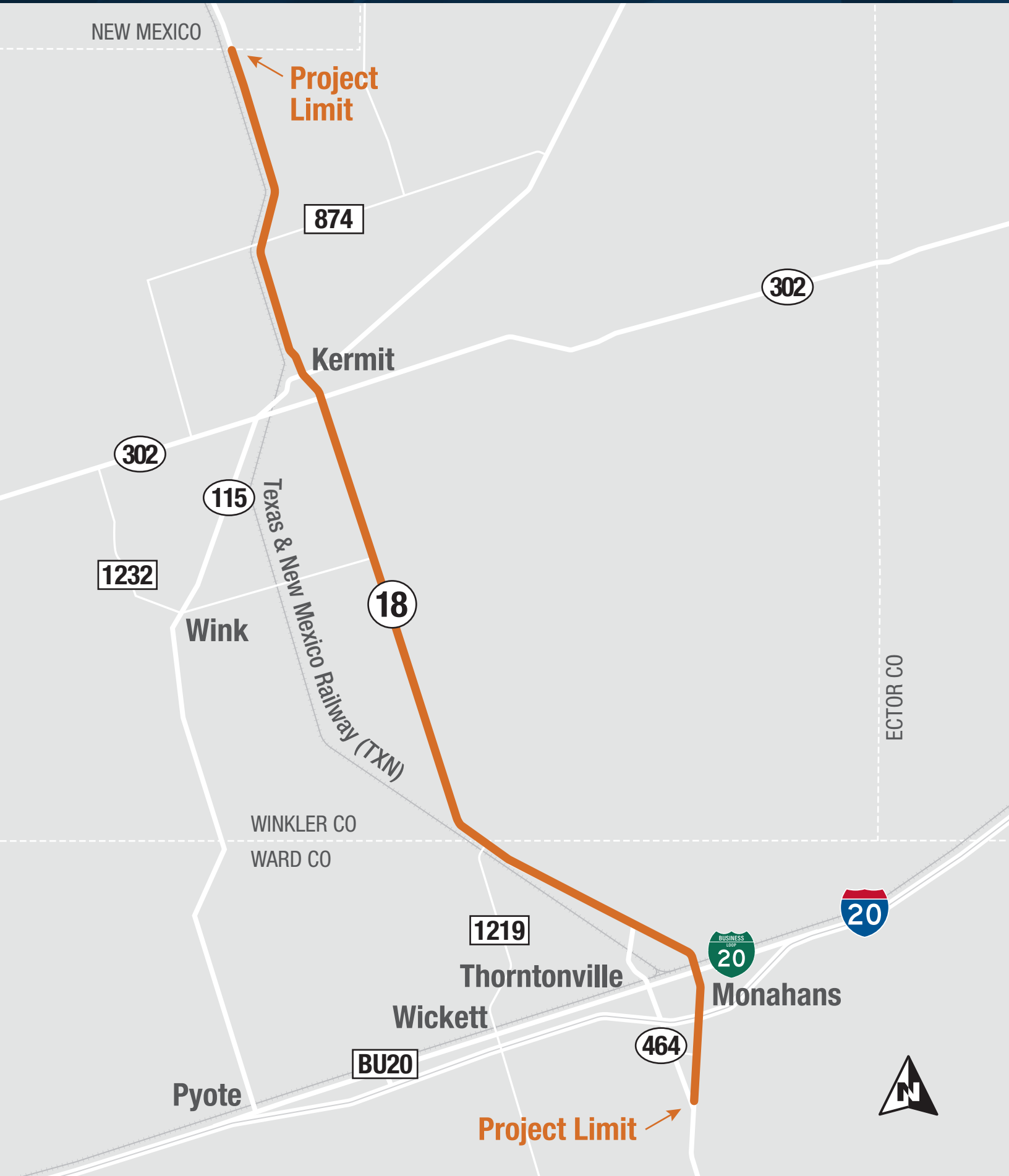
SH 18 North

From the New Mexico state line to SL 464 south of Monahans

CSJs: 0292-01-038 ★ 0292-02-044 ★ 0292-03-035 ★ 0292-04-069

Ward and Winkler counties, Texas

- Learn about the SH 18 North Project
- Provide comments on the proposed project



Project Overview

- SH 18 North is about 37 miles in length from the New Mexico state line to SL 464 south of Monahans.
- Proposed improvements to SH 18 North would include:
 - Widening to a four-lane divided highway with two lanes in each direction
 - A center median or barrier
 - Turn lanes throughout the entire length of the project
- This project is currently proposing improvements only to the rural sections outside of the cities of Kermit and Monahans.
- Initial project studies would evaluate and analyze improvements for safety while avoiding and minimizing impacts to landowners, the community, and the environment.



What is TxDOT Considering?

The SH 18 North project will consider a number of issues, concerns and needs as improvement options are developed and refined. Considerations include:



Safety



Public and Stakeholder
Involvement



Energy Sector



Environmental and
Community Features



Traffic Flow

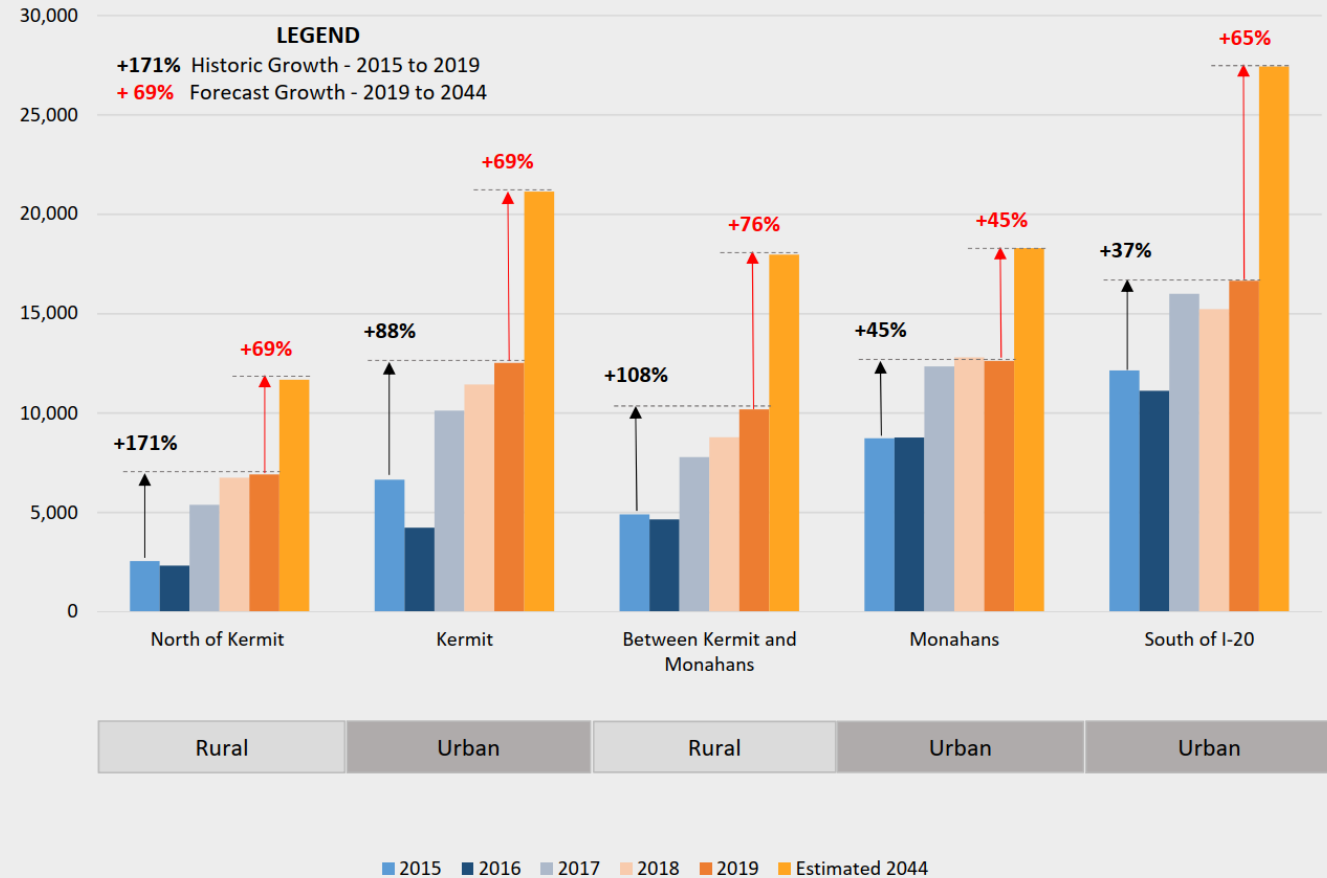


Connectivity and
Access

Overall Traffic and Freight Traffic Volumes

- 90% traffic volume increase from 2015 – 2019 (actual growth)
- 65% traffic volume increase from 2019 – 2044 (projected growth)
- Average truck traffic along corridor ranges from 28-33%
 - New Mexico state line to SH 302: 33%
 - SH 302 to Winkler County line: 28%
 - Winkler County line to BI-20: 31%
 - BI-20 to I-20: 29%

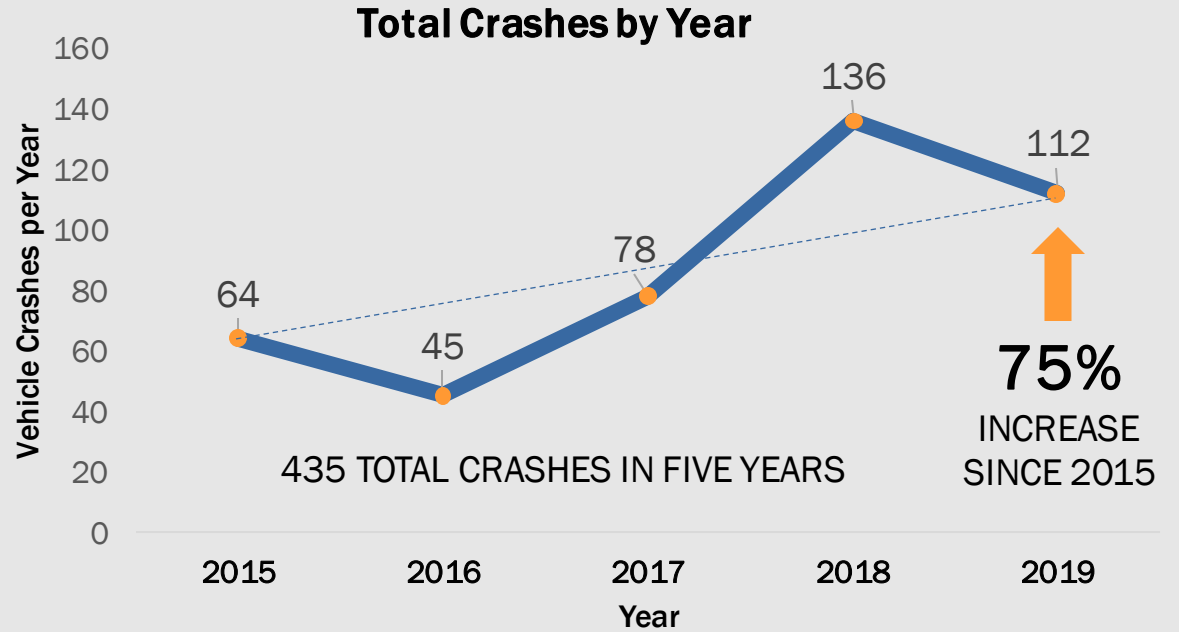
SH 18 Annual Average Daily Traffic (AADT) Volumes



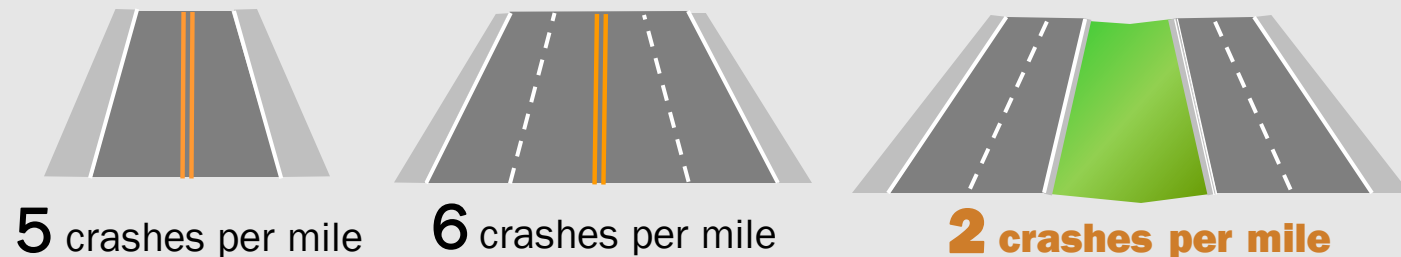
Note: TxDOT STARS II Traffic Count Database, TxDOT TP&P Forecasts

2015-2019 Crash Analysis

- Crash activity has increased 75% from 2015 to 2019 from 64 to 112 crashes per year.
- Urban areas average 40 crashes per mile, while rural areas average five per mile over the five-year period.
- Fatal and injury crashes represent 28% of total corridor crashes; their portion on rural segments is 40%.
- In rural areas of the corridor, two-lane undivided highways average 5 crashes per mile, four-lane undivided highways average 6 crashes per mile and four-lane divided highways average 2 crashes per mile.

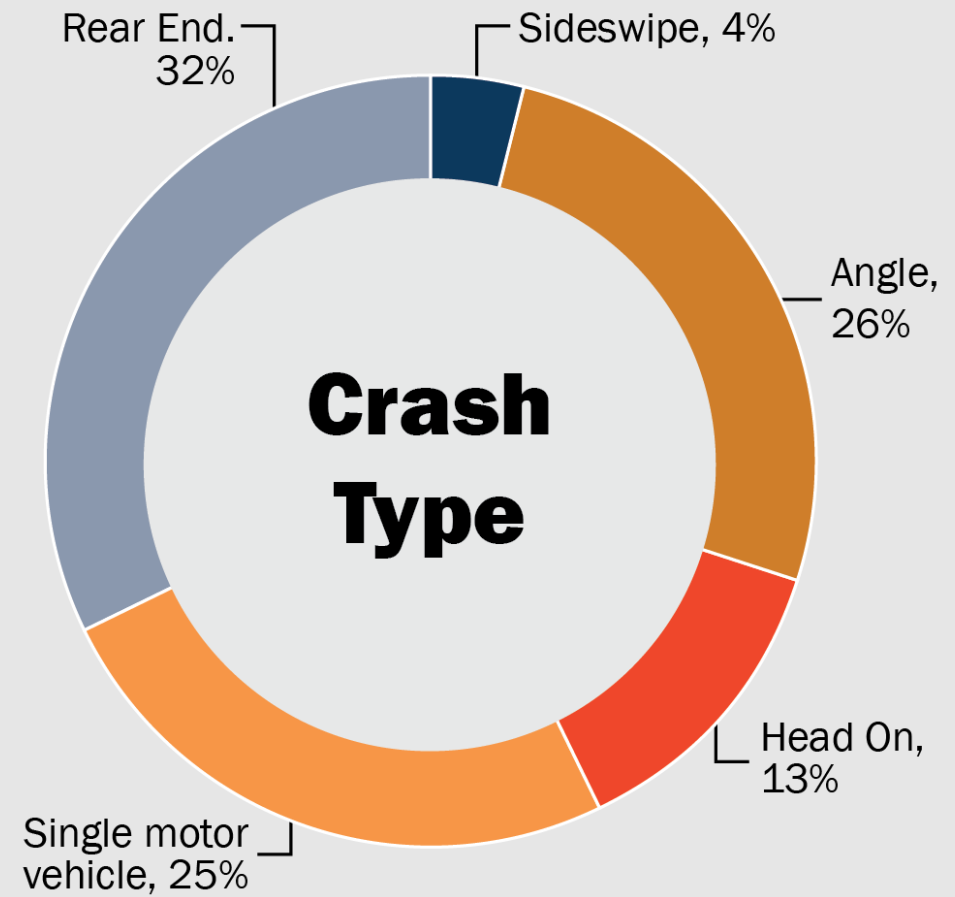
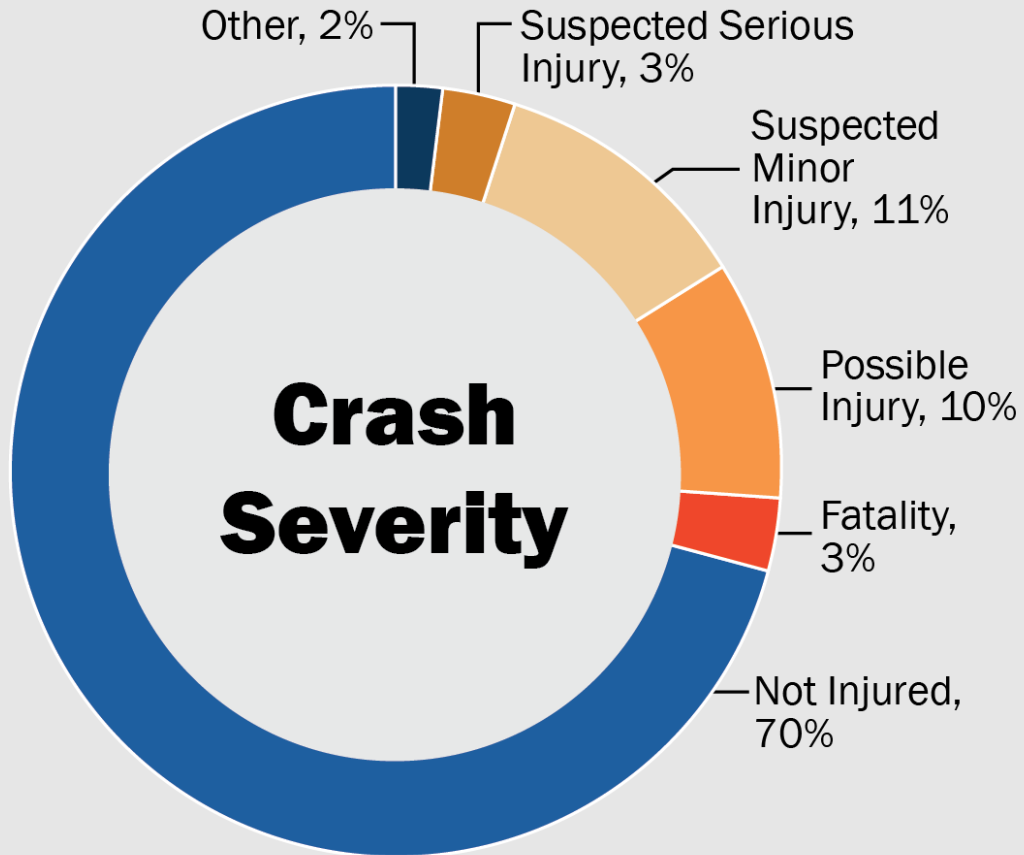


SH 18 North Rural Average Crashes per Mile by Road Type



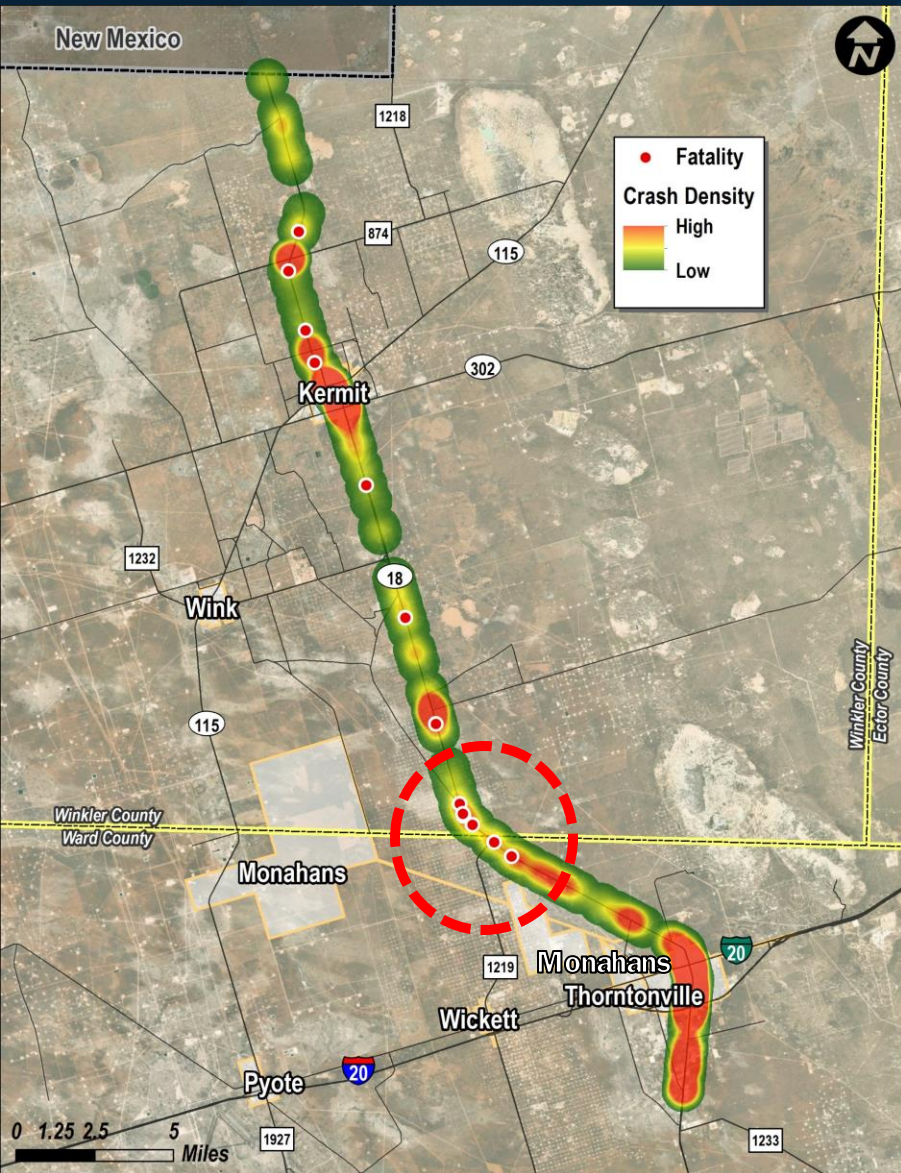
Note: TxDOT Crash Record Information System – 2015-2019 crash records

2015-2019 Crash Analysis



Note: TxDOT Crash Record Information System – 2015-2019 crash records

2015-2019 Crash Analysis



- The largest concentration of crashes are shown in orange and red on the map, while lesser concentrations are shown in yellow and low concentrations in green.
- All fatal crashes, shown as red dots, occurred in rural areas, four north of Kermit and nine between Kermit and Monahans.
- The highest concentration of fatal crashes – six of 13 - occurred near the Ward/Winkler county line.

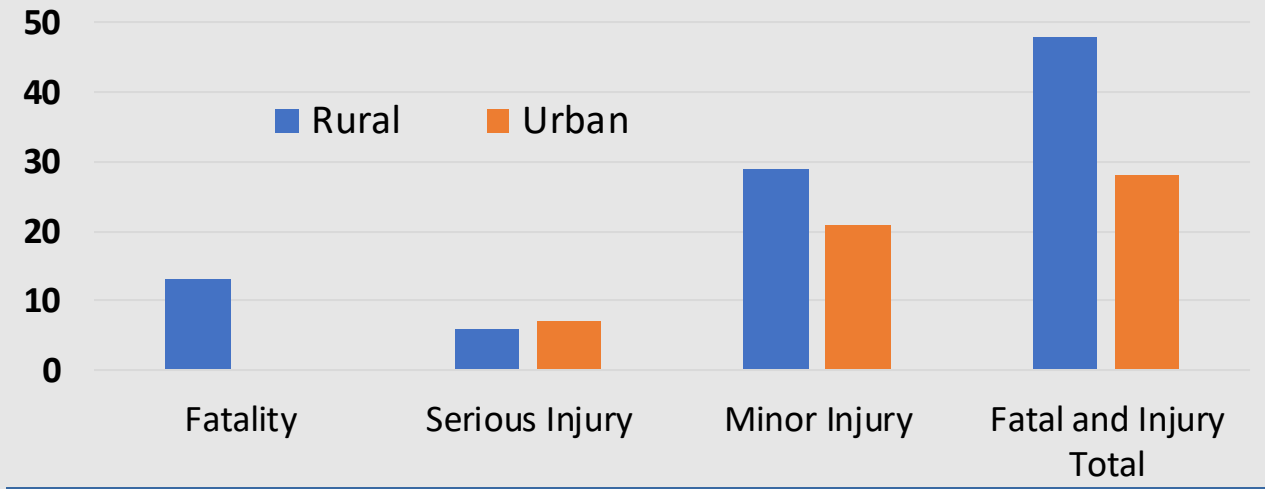
Note: TxDOT Crash Record Information System – 2015-2019 crash records

2015-2019 Rural Crash Analysis

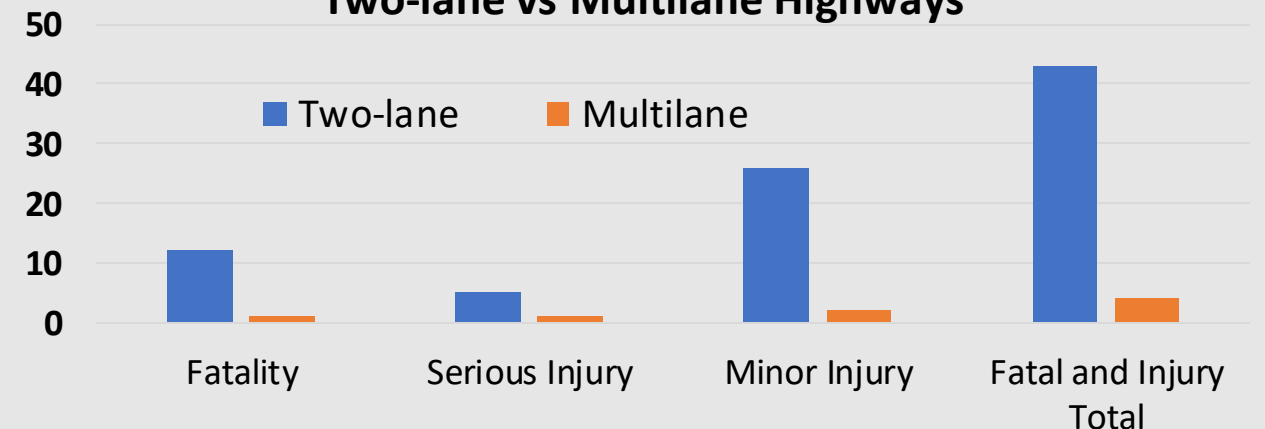


- Though rural crash rates are lower than statewide averages, rural crash severity is far worse than those of urban sections.
- Rural segments experience:
 - All 13 fatal crashes in the corridor (100%)
 - Six of 13 serious injury crashes (46%)
 - 29 of 50 minor injury crashes (58%)
- Two-lane rural highway segments experience:
 - 12 of 13 fatal crashes (92%)
 - Five of 6 serious injury crashes (83%)
 - 26 of 28 minor injury crashes (93%)

2015-2019 SH 18 Major Crashes - Urban vs Rural

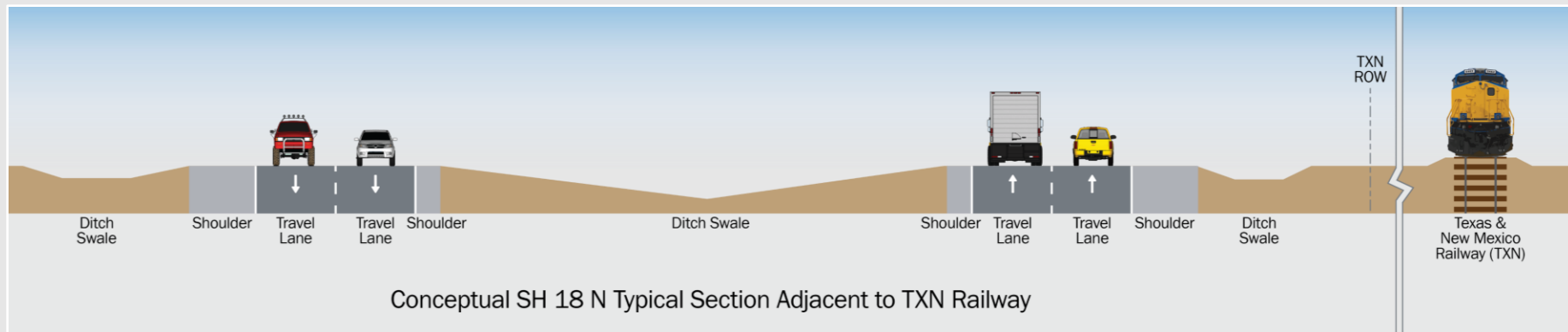
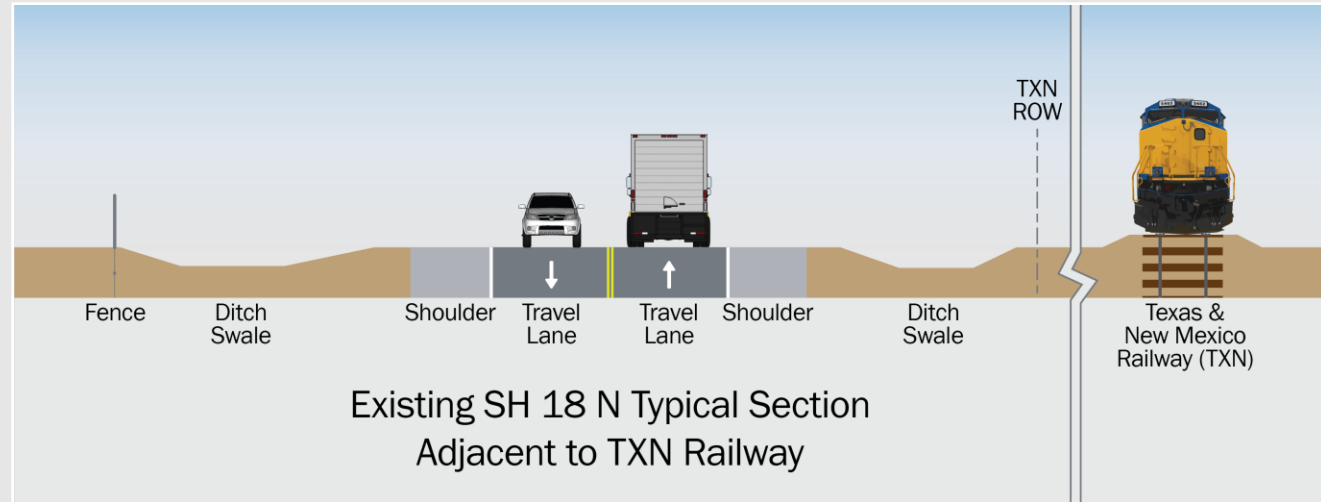


2015-2019 SH 18 Major Crashes – Two-lane vs Multilane Highways

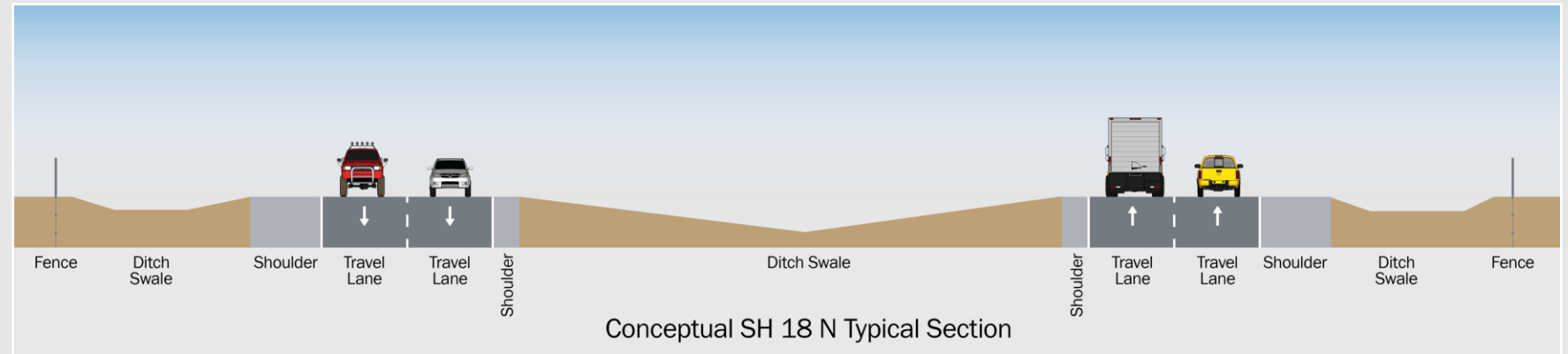
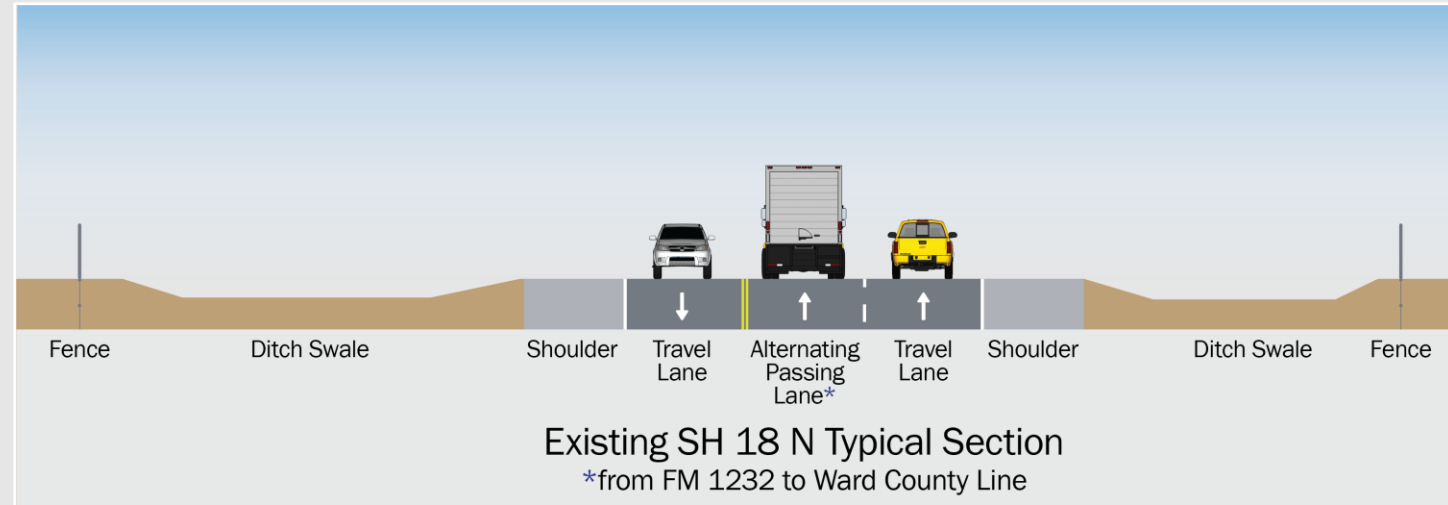


Note: TxDOT Crash Record Information System – 2015-2019 crash records

Rural Typical Section



Rural Typical Section



RIGHT OF WAY

Environmental Process

The environmental study will identify and assess potential impacts to the natural and human environment, including the following:



AIR
QUALITY



COMMUNITY
IMPACTS



HAZARDOUS
MATERIAL SITES



HISTORICAL &
ARCHEOLOGICAL
RESOURCES



LAND USE &
PARKLAND



THREATENED &
ENDANGERED
SPECIES



TRAFFIC
NOISE



VEGETATION &
WILDLIFE



WATER
RESOURCES

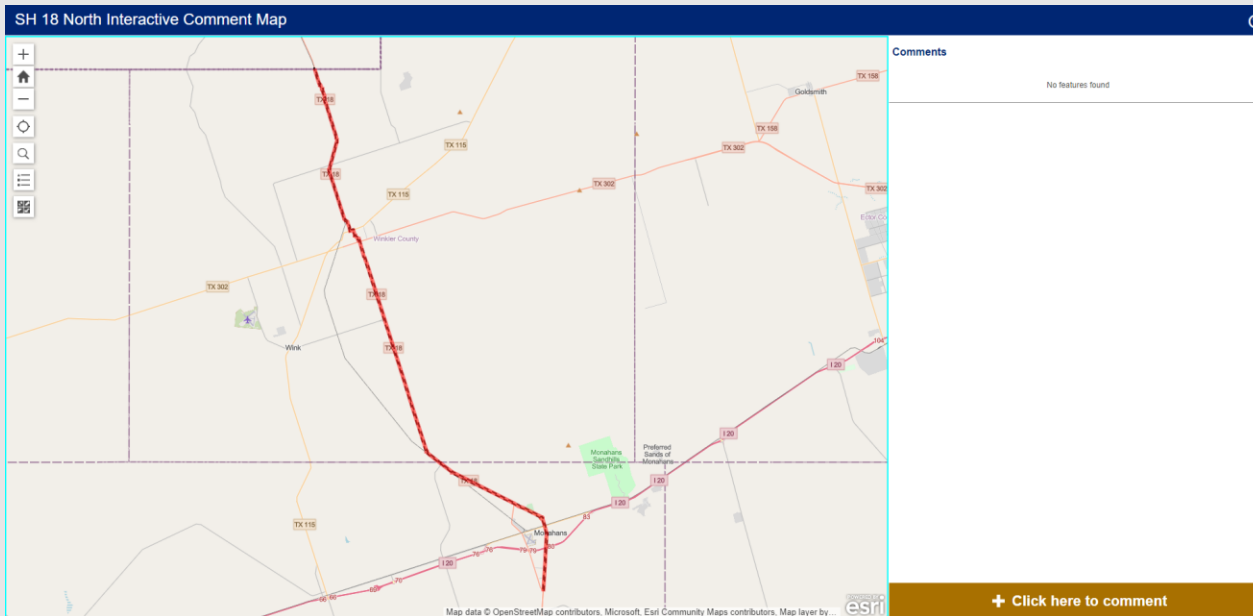
The environmental review, consultation, and other actions required by applicable Federal environmental laws for this project are being, or have been, carried out by TxDOT pursuant to 23. U.S.C. 327 and a Memorandum of Understanding dated Dec. 9, 2019, and executed by FHWA and TxDOT.

Interactive Comment Map

One of the ways for you to provide us input is to provide comments within the interactive comment map.

You can access the online interactive comment map at this station.

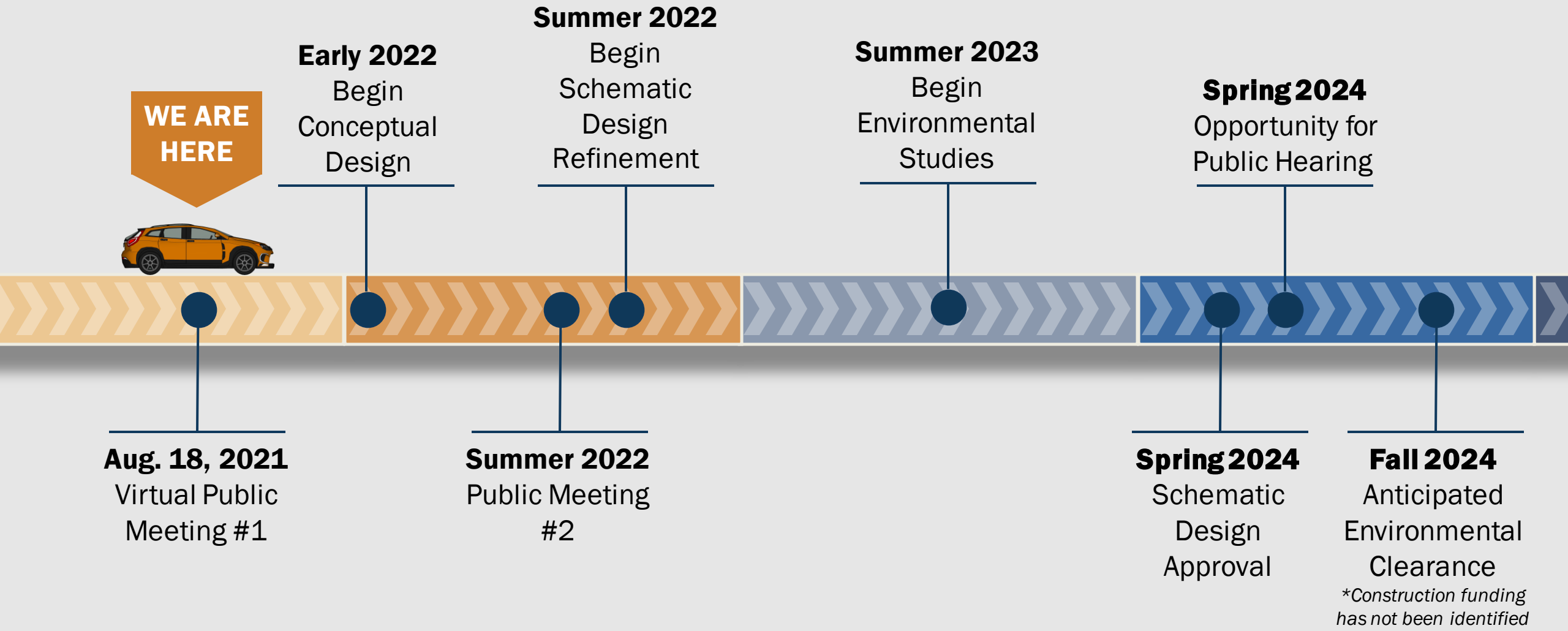
Feel free to explore the map and provide multiple comments at your convenience.



DETAILED DIRECTIONS FOR LEAVING A COMMENT

- **STEP ONE:** To access the online interactive comment map, click on the link in the TxDOT.gov virtual public meeting web page or Virtual Room.
- **STEP TWO:** Review the map Please review the instructions popup window using the scroll bar. Click the X in the top right corner of the popup window to close the window. Then, you will see an interactive map on the left and comments on the right. You can zoom in and click through the map to see locations, streets, and other participants' comments. To change the map background, click on the basemap gallery button on the left side of the screen to change the background to aerial imagery, streets, topographic, or other map background options. Click on the legend button on the left side of the screen to view a map legend.
- **STEP THREE:** To leave a comment:
 - Click “Click here to comment” on the right side in orange.
 - You should see a comment form with a prompt to indicate a location for your comment. A location can be provided by clicking on the map at the spot where you would like to leave your comment.
 - Once the location field has been populated, please leave a detailed comment within the comment box to the right.
 - Once your comment is completed, click “report it.” Doing so will send the comment to TxDOT.
 - Repeat these steps to leave additional comments if you wish.

Project Planning Timeline



Schedule subject to change

How to Comment

Give Us Your Input



Online Comment Form

Please access on the TxDOT.gov virtual public meeting web page or from the virtual room



Interactive Comment Map

Please access on the TxDOT.gov virtual public meeting web page or from the virtual room



Email

SH18North@wsp.com



Mail

WSP USA

Attn: SH 18 North

1601 S. Mopac Expressway,
Suite 325
Austin, TX 78746

Send a letter or print out the comment form available in the downloads section and mail to the address above

Please submit
or postmark
comments by:
Friday,
Sept. 3, 2021



If you have any questions or need additional information you may contact:

Chris Bergeron, PE, Project Consultant Engineer, (214) 459-1902, SH18North@wsp.com