

INTERACTIVE COMMENT MAP

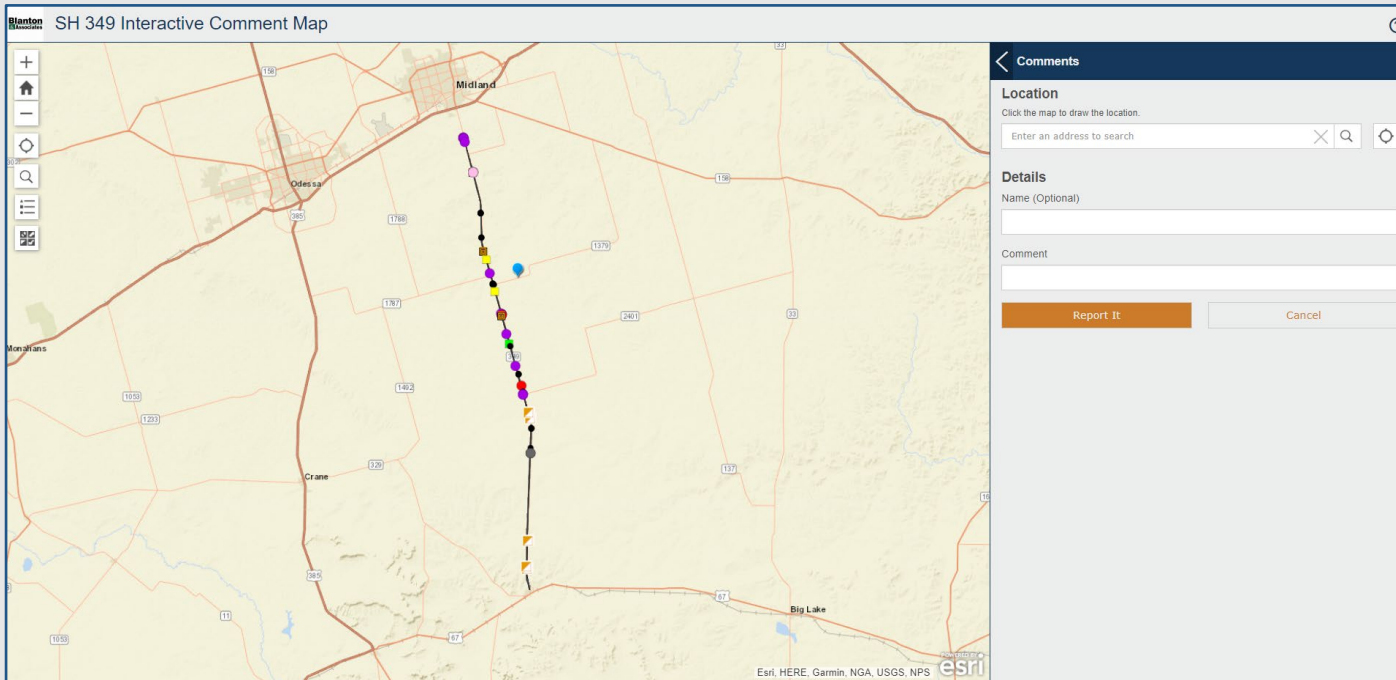


WE WANT YOUR INPUT

Your comments are vital for TxDOT to understand your interests, concerns, and needs within the project limits. TxDOT will read, discuss, and consider adjustments to the project based on your comments and overall feedback. It is for this reason, we ask for you to take a moment, and provide comments within the interactive comment map.

Access the online interactive comment map [here](#).

Feel free to explore the map and provide multiple comments at your convenience. Thank you for your input.



DETAILED DIRECTIONS FOR LEAVING A COMMENT

To access the online interactive comment map, click [here](#) and a new browser window will open.

You will see an interactive map on the left and comments on the right. You can zoom in and click through the map to see locations, streets, and other participant's comments. To change the map background, click on the base map gallery button on the left side of the screen to change the background to aerial imagery, streets, topographic, or other map background options.

To leave a comment, please follow these steps:

- 1) Click "Click Here to Submit Comment" on the right side in orange.
- 2) You should see a comment form with a prompt to indicate a location for your comment. A location can be provided by clicking on the map at the spot where you would like to leave your comment.
- 3) Once the location field has been populated, please leave a detailed comment within the comment box.
- 4) Once your comment is completed, click "report it." Doing so will send the comment to TxDOT.