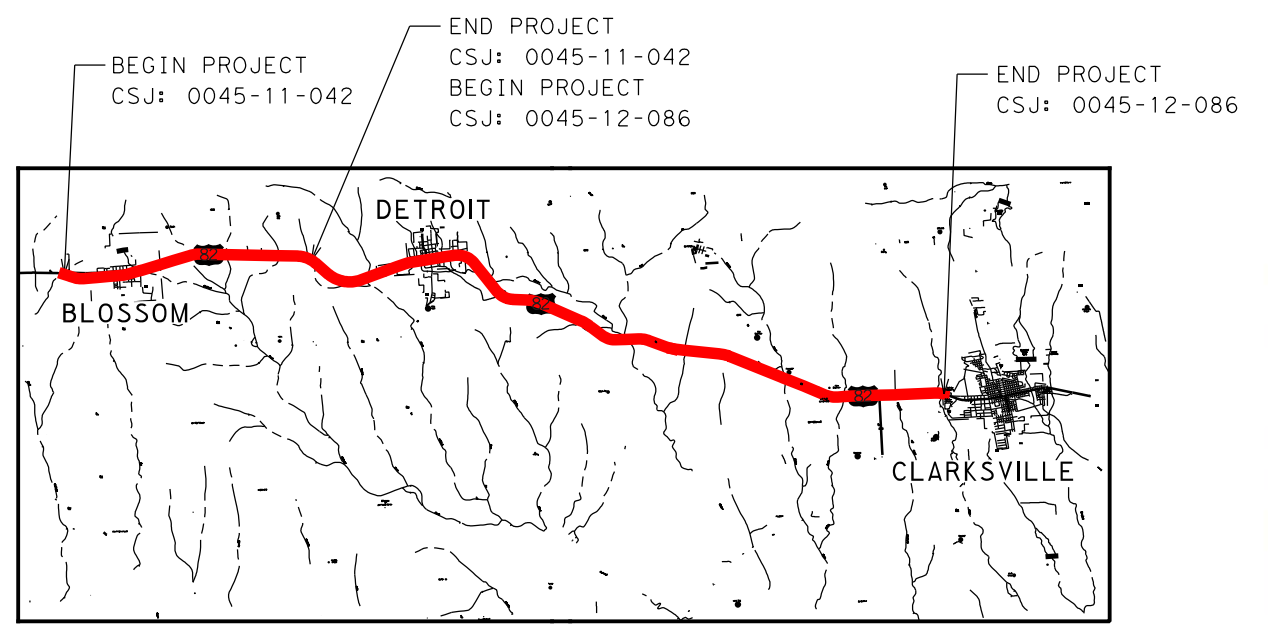


ALTERNATIVE EXHIBITS
US 82 WIDENING
FROM W. DIVISION STREET IN BLOSSOM,
TO SH 37 IN CLARKSVILLE,
LAMAR COUNTY & RED RIVER COUNTY, TEXAS
CSJ: 0045-11-042 & 0045-12-086

ROLL 1 OF 6

PROJECT LENGTH:	22.1 MILES
AVERAGE DAILY TRAFFIC:	
FUNCTIONAL CLASSIFICATION:	DESIGN SPEED:
RURAL HIGHWAY	70 MPH
URBAN STREET	40 MPH
SUBURBAN ARTERIAL	60 MPH



LOCATION MAP
N.T.S.

- LEGEND
- EXISTING ROW
 - EXISTING PROPERTY LIMITS
 - EXISTING DRAINAGE STRUCTURES
 - PROPOSED BASELINE
 - PROPOSED ROW
 - PROPOSED EDGE OF PAVEMENT
 - PROPOSED MEDIAN
 - PROPOSED PAVEMENT
 - PROPOSED BRIDGE
 - PROPOSED SIDEWALK
 - 100 YR FLOODPLAIN LIMITS
 - POTENTIAL DISPLACEMENT
 - CITY LIMITS
 - PARK/OPEN SPACE
 - CEMETERY
 - NORTHEAST TEXAS TRAIL
 - SCHOOL
 - PLACE OF WORSHIP

RED RIVER COUNTY, TEXAS
LAMAR COUNTY, TEXAS

PRELIMINARY
FOR INTERIM REVIEW ONLY

THESE PLANS AND SPECIFICATIONS ARE FOR INTERIM REVIEW AND NOT INTENDED FOR CONSTRUCTION. ANY CHANGES TO THESE PLANS AND SPECIFICATIONS MUST BE APPROVED BY THE DISTRICT ENGINEER.

WILLIAM P. HICKS	08/11	1/22/2020
JOSHUA W. BARTON	1/22/20	1/22/2020

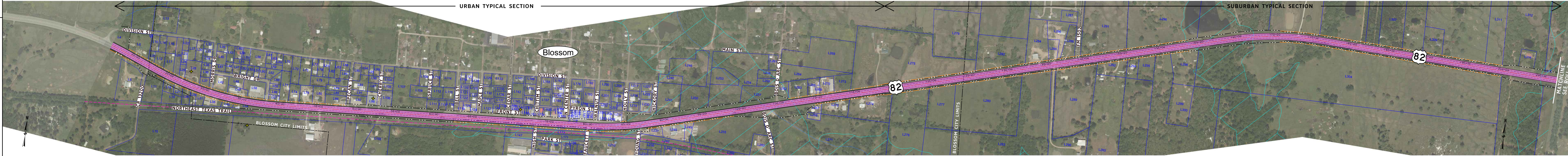
HALFF ASSOCIATES, INC.
TYPE #104 47-312

TXDOT PARIS DISTRICT
TEXAS COUNTY MAP
N.T.S.

HALFF
1121 ESE LOOP 323, SUITE 117
TYLER, TEXAS 75703
TEL: 903.817.5260

© 2020 by Texas Department of Transportation all rights reserved

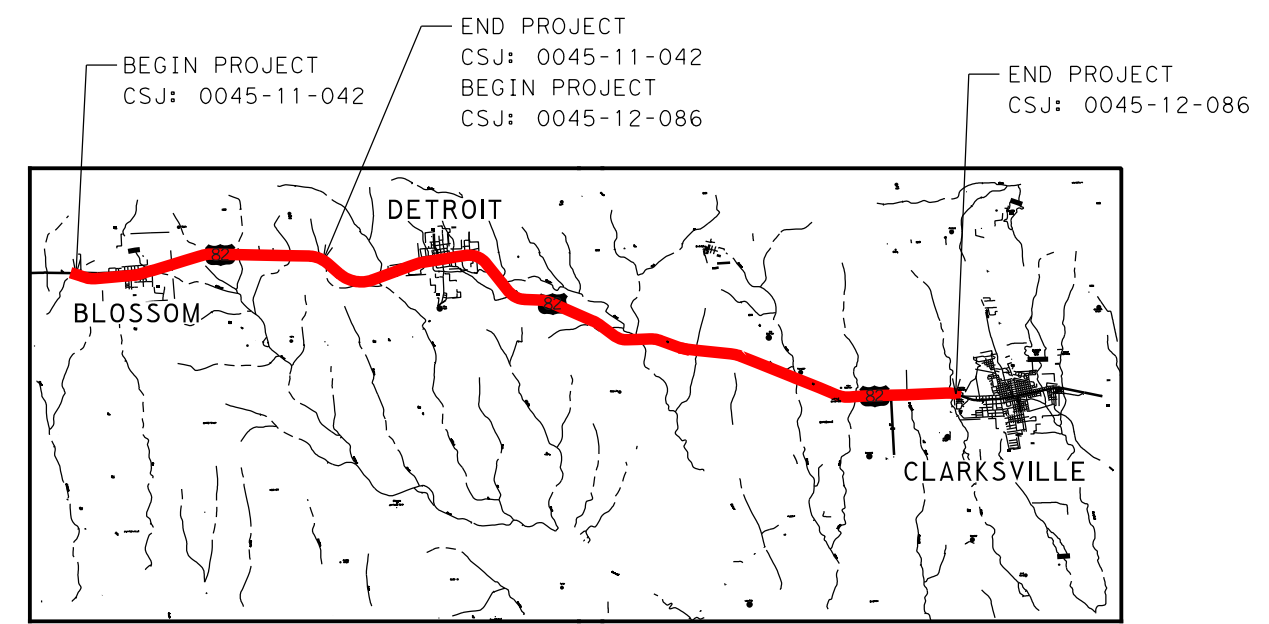
ALTERNATIVE A - HOLD CENTERLINE



ALTERNATIVE EXHIBITS
US 82 WIDENING
FROM W. DIVISION STREET IN BLOSSOM,
TO SH 37 IN CLARKSVILLE,
LAMAR COUNTY & RED RIVER COUNTY, TEXAS
CSJ: 0045-11-042 & 0045-12-086

ROLL 1 OF 6

PROJECT LENGTH:	22.1 MILES
AVERAGE DAILY TRAFFIC:	
FUNCTIONAL CLASSIFICATION:	DESIGN SPEED:
RURAL HIGHWAY	70 MPH
URBAN STREET	40 MPH
SUBURBAN ARTERIAL	60 MPH



LOCATION MAP
N.T.S.

- LEGEND
- EXISTING ROW
 - EXISTING PROPERTY LIMITS
 - EXISTING DRAINAGE STRUCTURES
 - PROPOSED BASELINE
 - PROPOSED ROW
 - PROPOSED EDGE OF PAVEMENT
 - PROPOSED MEDIAN
 - PROPOSED PAVEMENT
 - PROPOSED BRIDGE
 - PROPOSED SIDEWALK
 - 100 YR FLOODPLAIN LIMITS
 - POTENTIAL DISPLACEMENT
 - CITY LIMITS
 - PARK/OPEN SPACE
 - CEMETERY
 - NORTHEAST TEXAS TRAIL
 - SCHOOL
 - PLACE OF WORSHIP

RED RIVER COUNTY, TEXAS
LAMAR COUNTY, TEXAS

PRELIMINARY
FOR INTERIM REVIEW ONLY

THESE PLANS AND SPECIFICATIONS ARE FOR INTERIM REVIEW AND NOT INTENDED FOR CONSTRUCTION. ANY CHANGES TO THESE PLANS AND SPECIFICATIONS MUST BE APPROVED BY THE DISTRICT ENGINEER.

WILLIAM P. HICKS	08/11	1/22/2020
JOSHUA W. BARTON	1/22/20	1/22/2020

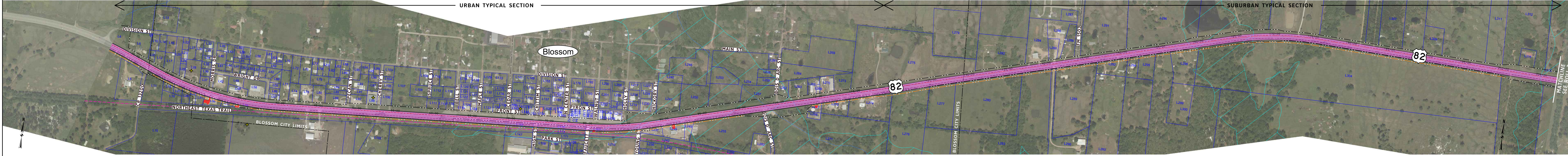
HALFF ASSOCIATES, INC.
TYPE #104 47-312

TXDOT PARIS DISTRICT
TEXAS COUNTY MAP
N.T.S.

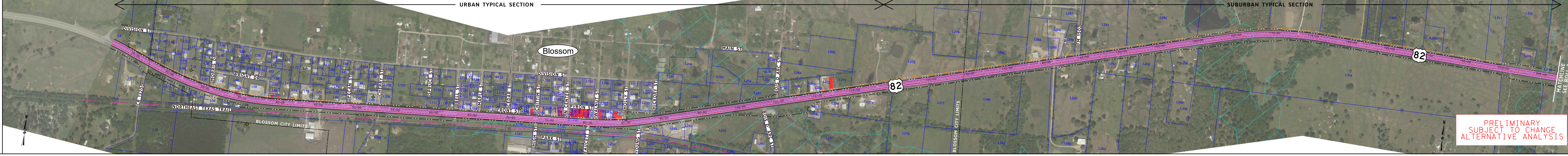
HALFF
1121 ESE LOOP 323, SUITE 117
TYLER, TEXAS 75703
TEL: 903.817.5260

© 2020 by Texas Department of Transportation all rights reserved

ALTERNATIVE B - WIDEN SOUTH



ALTERNATIVE C - WIDEN NORTH



PRELIMINARY
SUBJECT TO CHANGE
ALTERNATIVE ANALYSIS