



PHARR-REYNOSA INTERNATIONAL BRIDGE EXPANSION PROJECT FACT SHEET



Pharr Port of Entry (POE) to the International Boundary with Mexico (Rio Grande) CSJ: 0921-02-479

Need

Northbound traffic—particularly rapidly growing commercial traffic—on the existing bridge has become increasingly congested, creating a bottleneck as it enters the Pharr POE.

Purpose

- Accommodate increasing traffic volumes
- Improve mobility
- Reduce congestion and wait times
- Allow for efficient separation of vehicle types

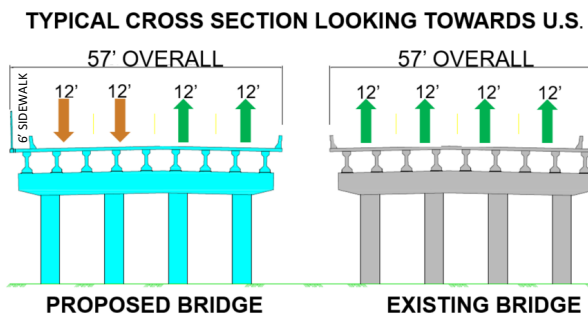
Details

- Project Length: 1.35 Miles
- Estimated Construction Cost: \$42.3M
- No new right-of-way

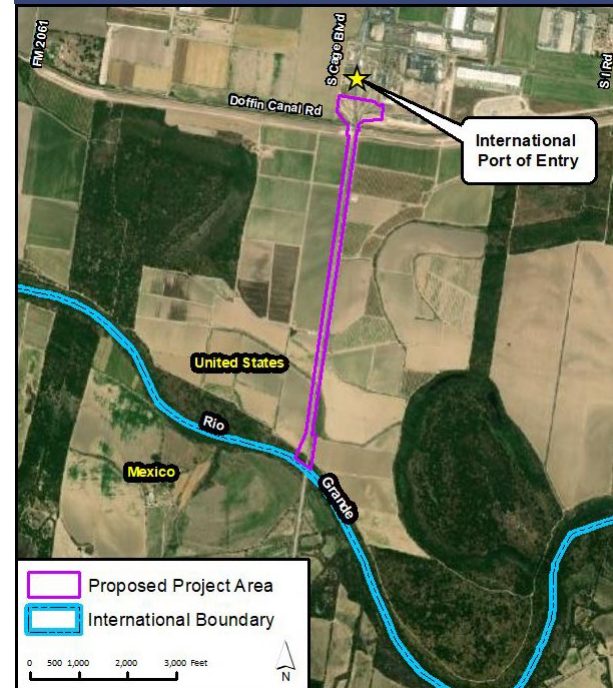
Description

The City of Pharr, in cooperation with the Texas Department of Transportation, and the Federal Highway Administration, proposes to construct an adjacent ‘twin’ structure to the existing Pharr-Reynosa International Bridge. The proposed facility includes a new tolled bridge with four 12-foot travel lanes identical in configuration to the existing bridge. The new bridge would accommodate commercial and noncommercial traffic in both directions of travel.

Proposed Typical Section



Location



Contact Information

Maria Rangel
Assistant Director of Engineering, City of Pharr
maria.rangel@pharr-tx.gov (956) 402-4221

Proposed Schedule

Environmental Process Start
January 2022

Public Meeting
May 2022

Draft Environmental Assessment
October 2022

Public Hearing
January 2023

Final Environmental Assessment
October 2023

Construction Start
August 2024