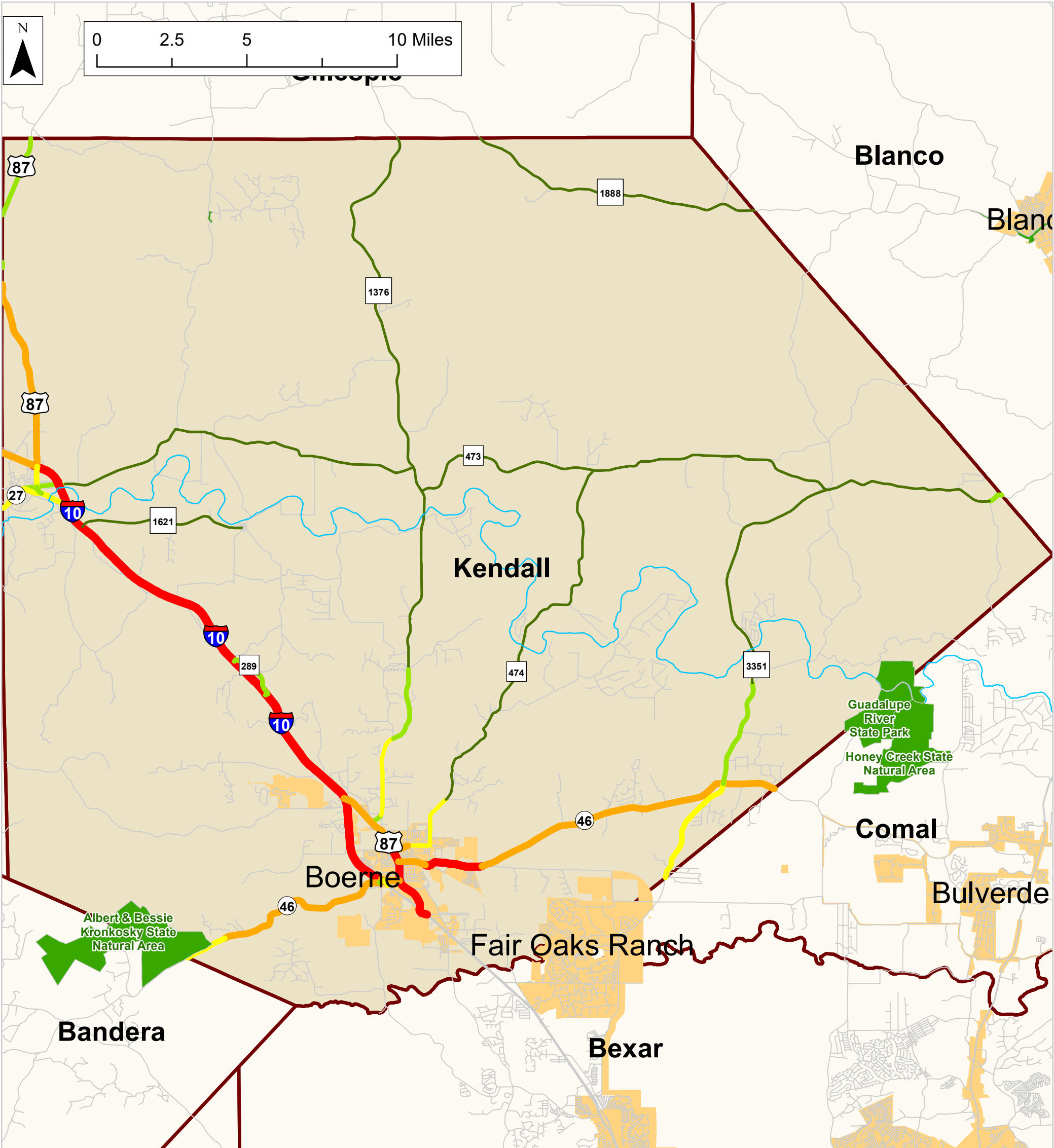


Average Daily Traffic in Kendall County, 2020



Legend

Vehicles per Day

- ≤ 2,000
- 2,001 - 4,000
- 4,001 - 8,000
- 8,001 - 15,000
- > 15,000

 Kendall County

 City Limits

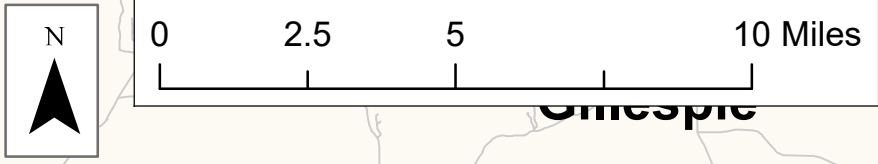
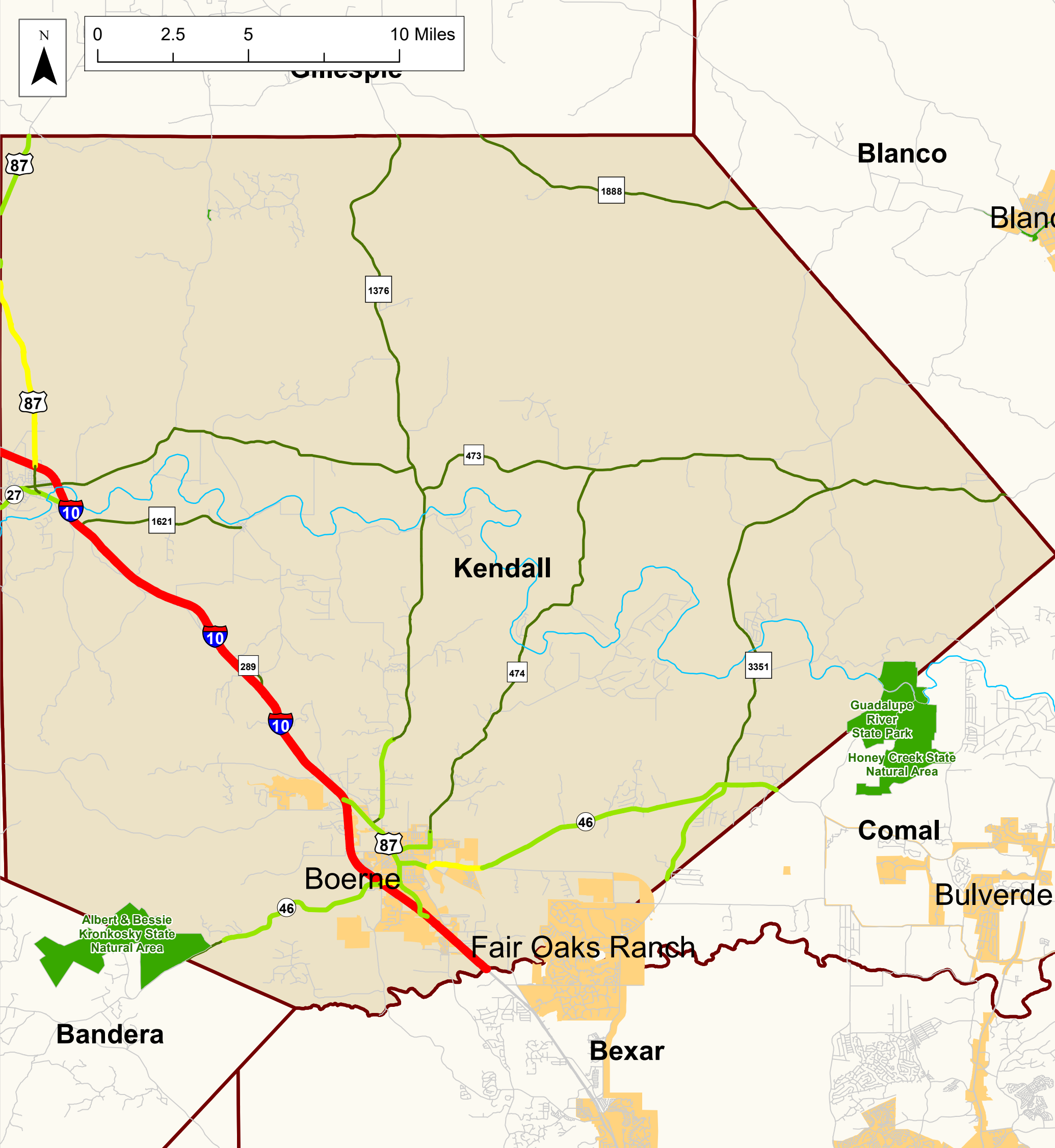
 State Park

 River & Water Body



Data Source: TxDOT Roadway Inventory

Average Daily Truck Traffic in Kendall County, 2020



Legend

Truck Vehicles per Day

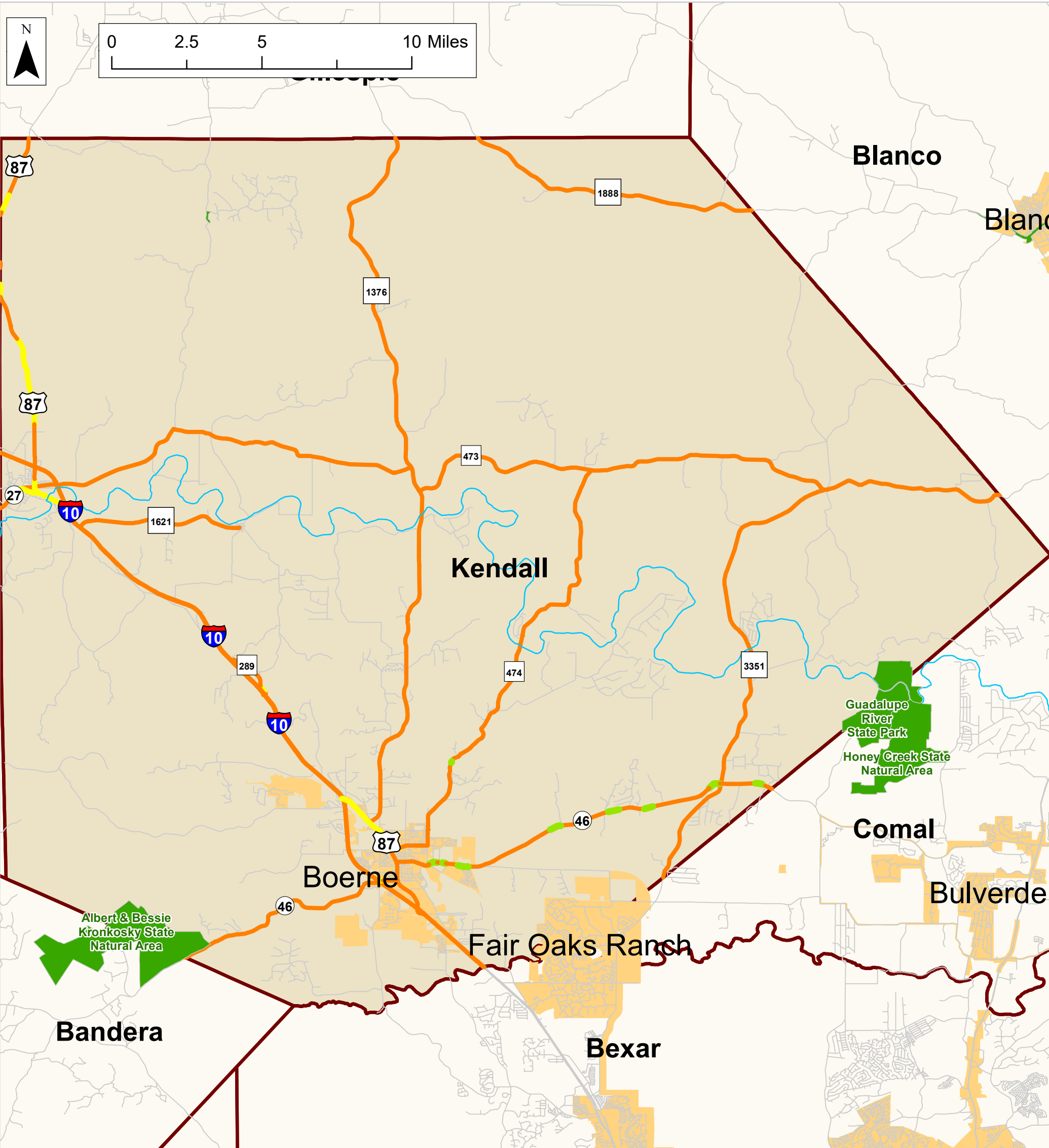
- ≤ 300
- 301 - 800
- 801 - 1,600
- 1,601 - 2,600
- > 2,600

- Kendall County
- City Limits
- State Park
- River & Water Body



Data Source: TxDOT Roadway Inventory

Lane Width in Kendall County, 2020



Legend

Lane Width (Feet)

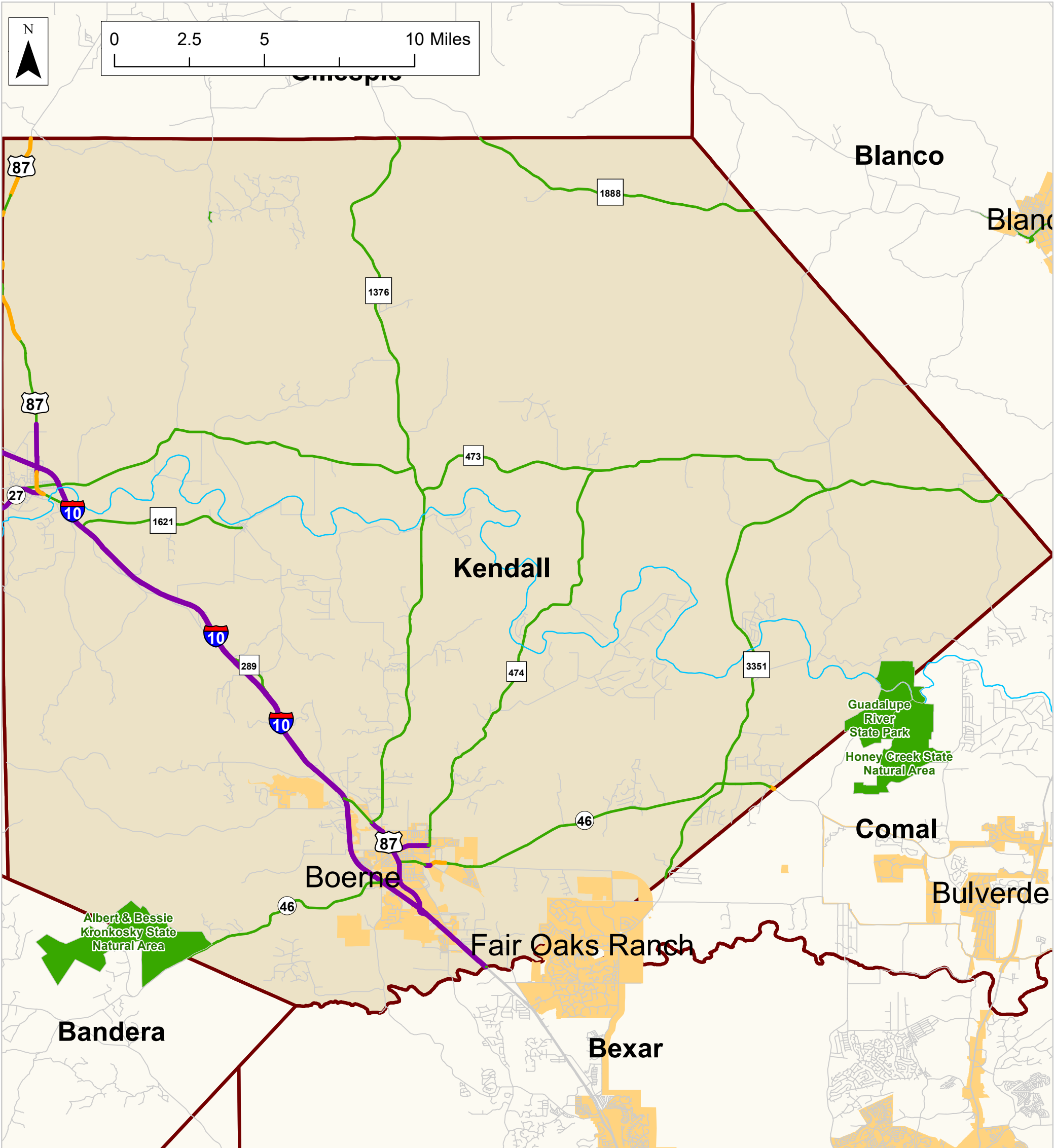
- 9 or less
- 10 - 12
- 13 - 15
- 16 - 18
- 20 - 22

- Kendall County
- City Limits
- State Park
- River & Water Body



Data Source: TxDOT Roadway Inventory

Number of Through Lanes in Kendall County, 2020



Legend

Number of Through Lanes*

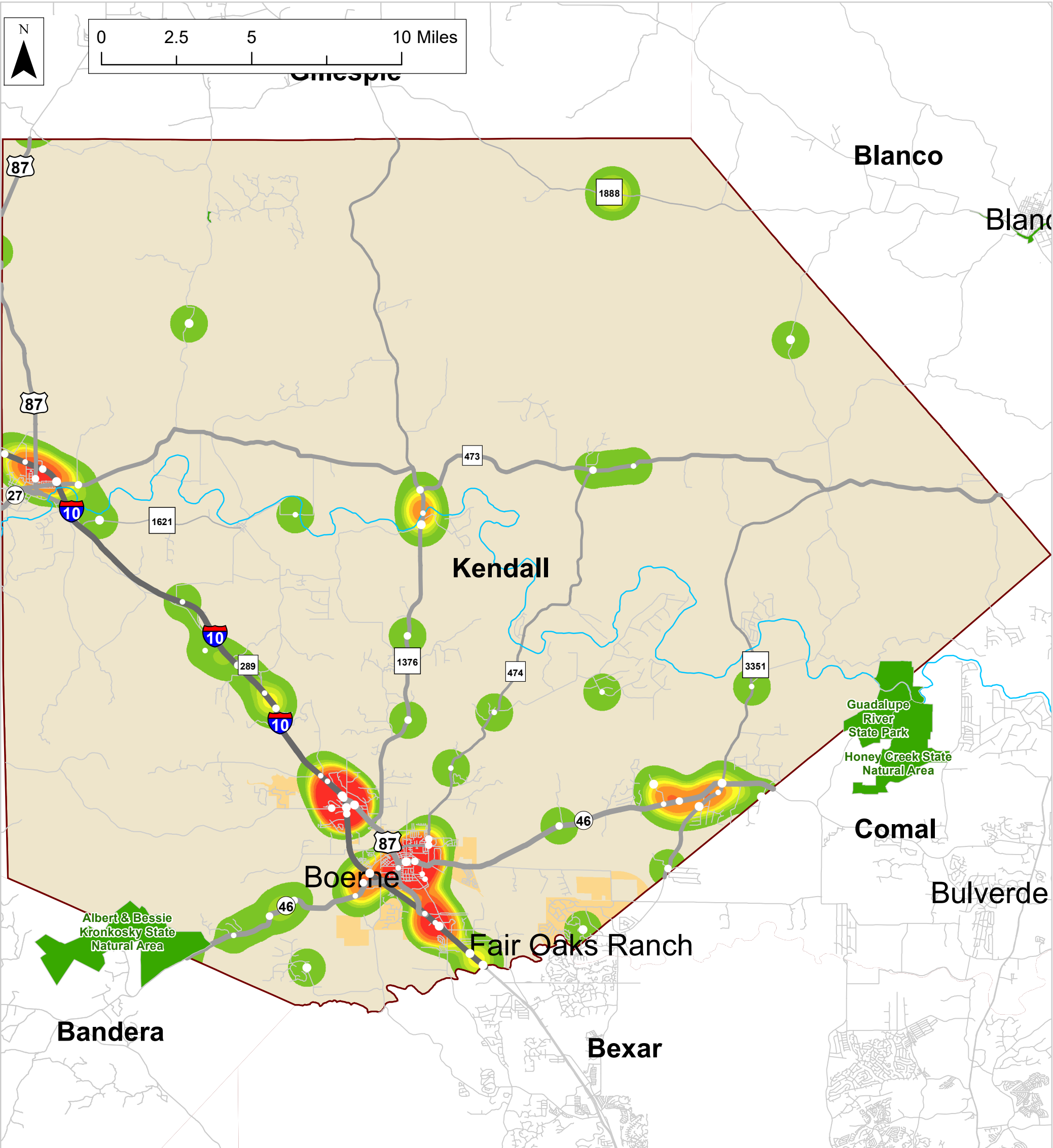
- Two Lanes
- Three Lanes
- Four Lanes
- Five Lanes
- Six Lanes

- State Park
- City Limits
- Kendall County
- River & Water Body






*Does not include turning, climbing, or auxiliary lanes, but does include Super 2 and exclusive HOV / HOT lanes.


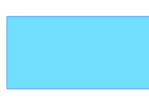


Location and Density of Fatal and Severe Crashes in Kendall County, 2018 - 2020



Legend

Crash Data

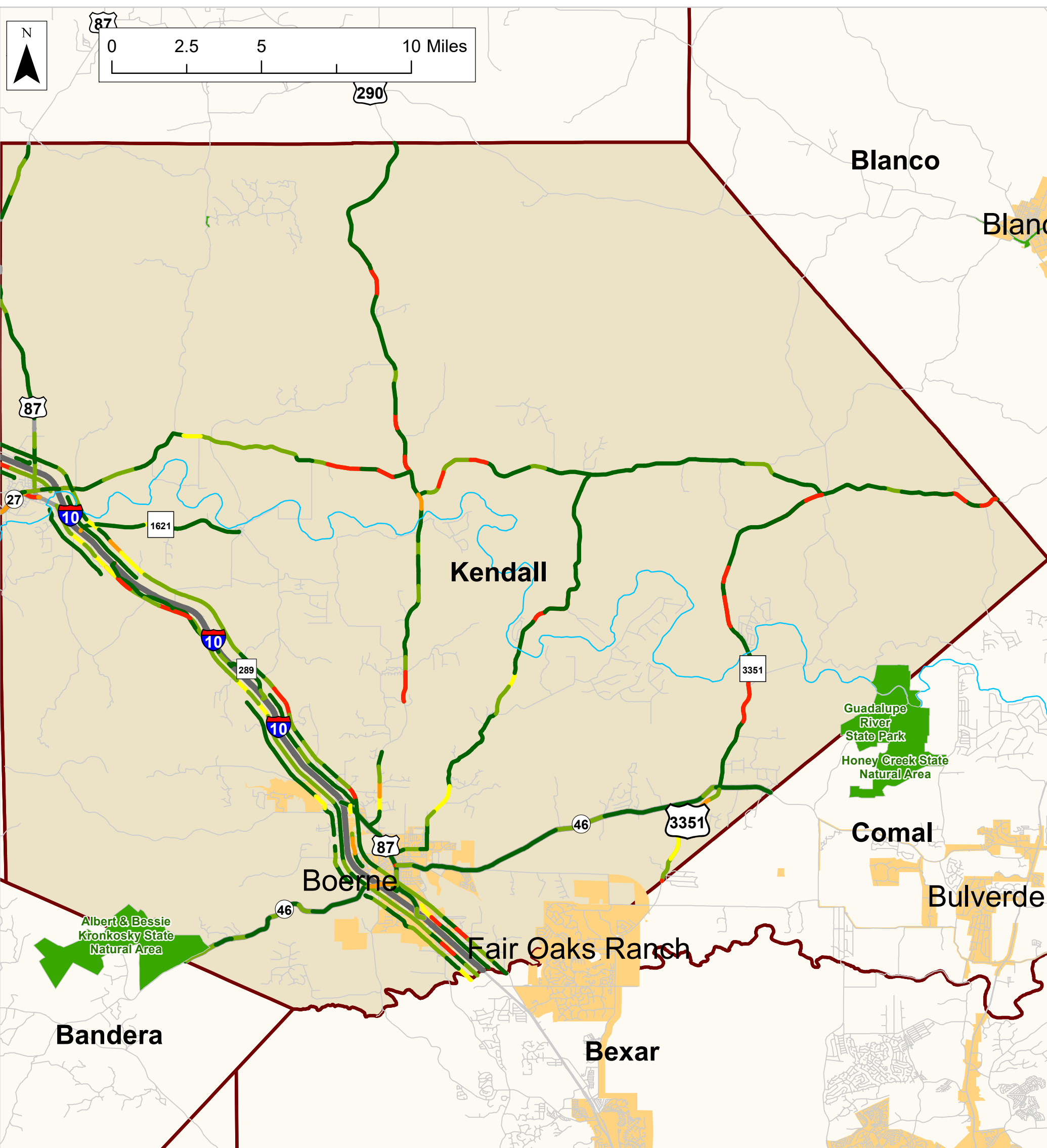
-  Fatal and Severe Injury Crashes (larger size indicate a more recent collision)
-  High Crash Density
-  Low Crash Density

-  Kendall County
-  River & Water Body
-  State Park
-  City Limits



Data Source: TxDOT Crash Records Information System

TxDOT Road Pavement Conditions in Kendall County



Legend

Pavement Score

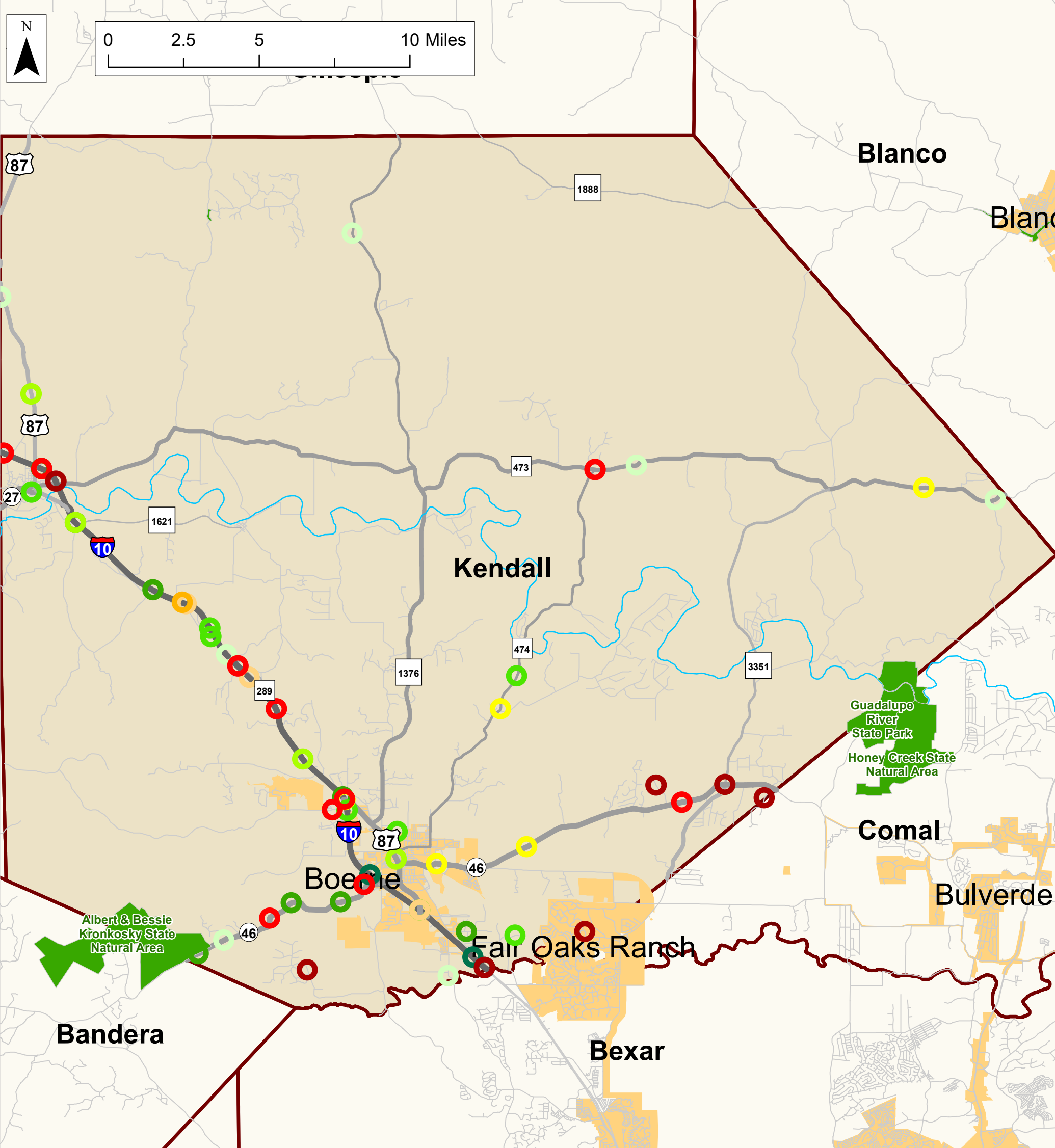
- 0 to 20
- 20 to 40
- 40 to 60
- 60 to 80
- 80 to 100

- State Park
- City Limits
- Kendall County
- River & Water Body



Data Source: Design and Construction Information System

Fatal Crashes in Kendall County, 2011 - 2020



Legend

Fatal Crash

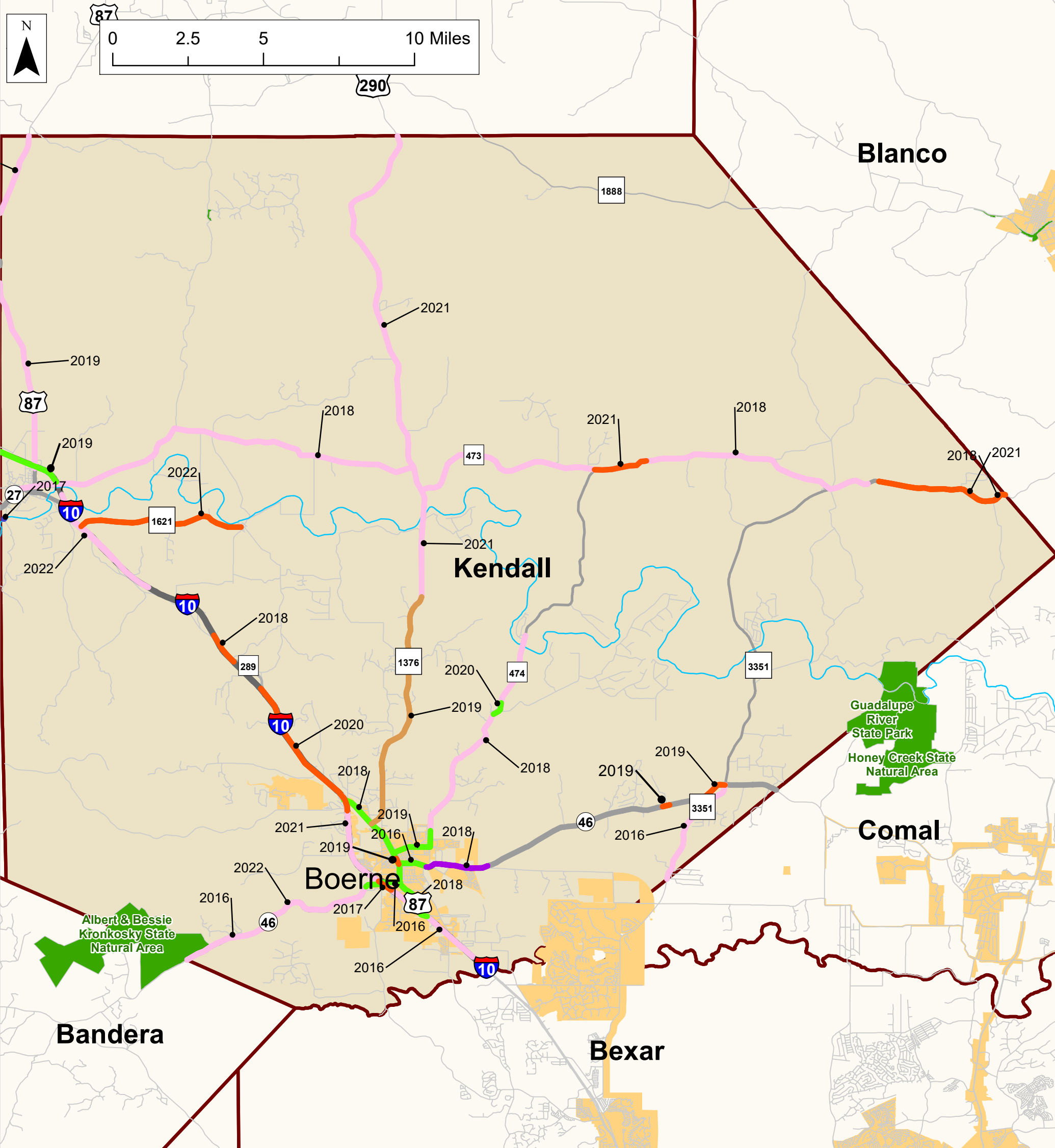
- | | | | |
|--|------|--|------|
| | 2011 | | 2016 |
| | 2012 | | 2017 |
| | 2013 | | 2018 |
| | 2014 | | 2019 |
| | 2015 | | 2020 |

- Kendall County
- City Limits
- River & Water Body
- State Park



Data Source: TxDOT Crash Records Information System

2016 to 2021 Funded TxDOT Projects in Kendall County



Legend

Project Class

- Bridge
- Restoration
- Widen
- Safety
- Resurface
- Seal Coat
- Overlay

State Park

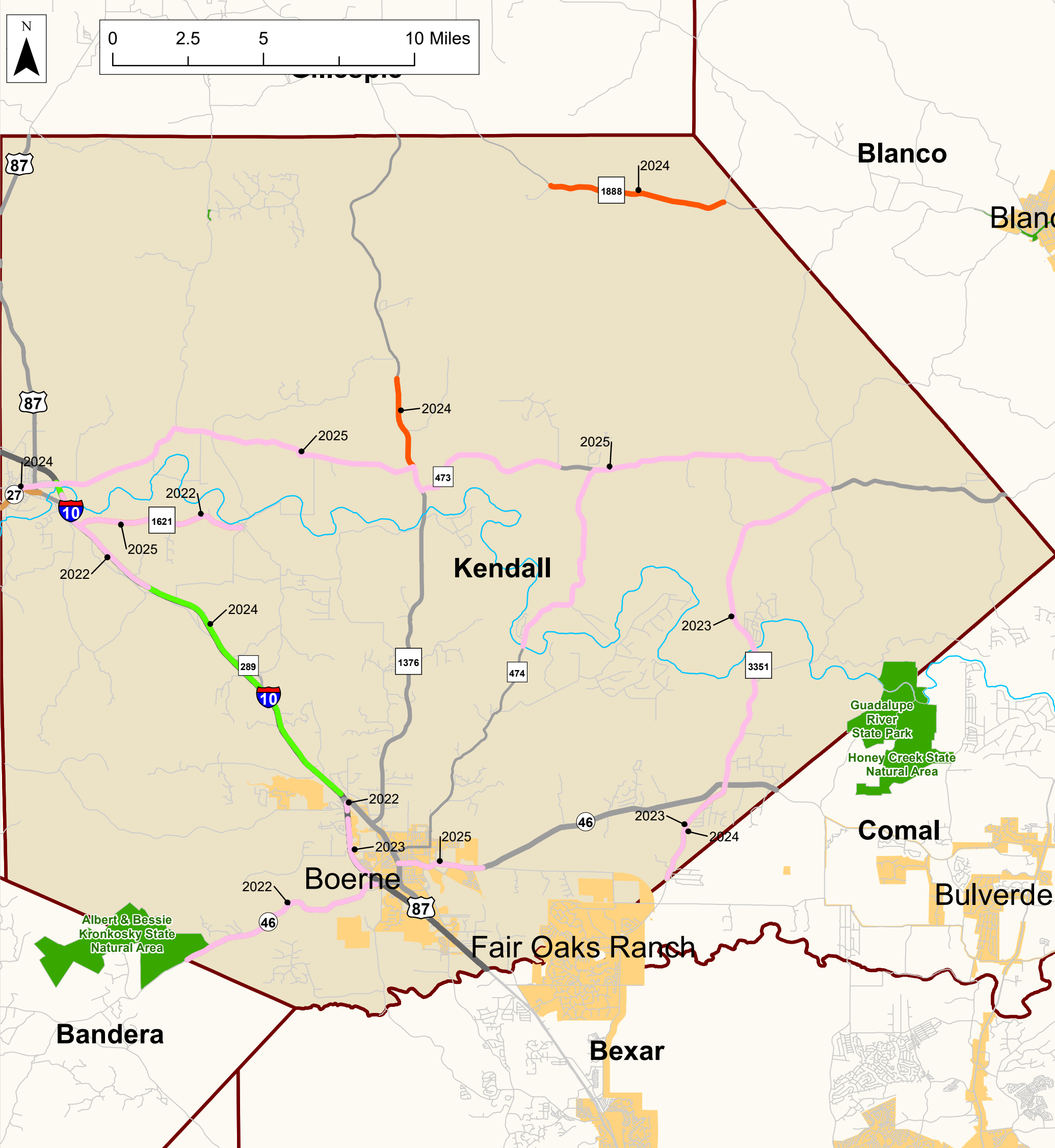
City Limits

Kendall County

River & Water Body



2022 to 2026 Funded TxDOT Projects in Kendall County



Legend

Project Class

- Bridge
- Sidewalk
- Restoration
- Widen
- Resurface
- Seal Coat
- Operational Improvement
- Safety
- Overlay

- State Park
- City Limits
- Kendall County
- River & Water Body

