



NW MILITARY HIGHWAY (FM 1535) IMPROVEMENT PROJECT

FROM LOOP 1604 TO HUEBNER RD.

Open House

December 12, 2018

5:00 – 7:00 p.m.



Barshop Jewish Community Center

12500 NW Military Hwy.

San Antonio, TX 78231

NW Military Highway (FM 1535) Improvement Project



Project Limits

From Loop 1604 to Huebner Rd.

Improvements Include

- Adding a continuous center-turn lane
- Adding sidewalks and bicycle accommodations

History of NW Military Hwy (FM 1535)

- NW Military Hwy. was constructed somewhere around 1945 as Harry Wurzbach Military Highway to connect Fort Sam Houston directly to Camp Bullis
- Back in 1999, TxDOT studied expansion to 6 lanes but did not move forward due to impacts
- As part of the 2010 Town Plan, the City of Shavano Park conducted a traffic study in 2010-2011 which indicated a significant increase in traffic along NW Military Hwy.
- In 2016, the Alamo Area Metropolitan Planning Organization selected the project for federal and state funding

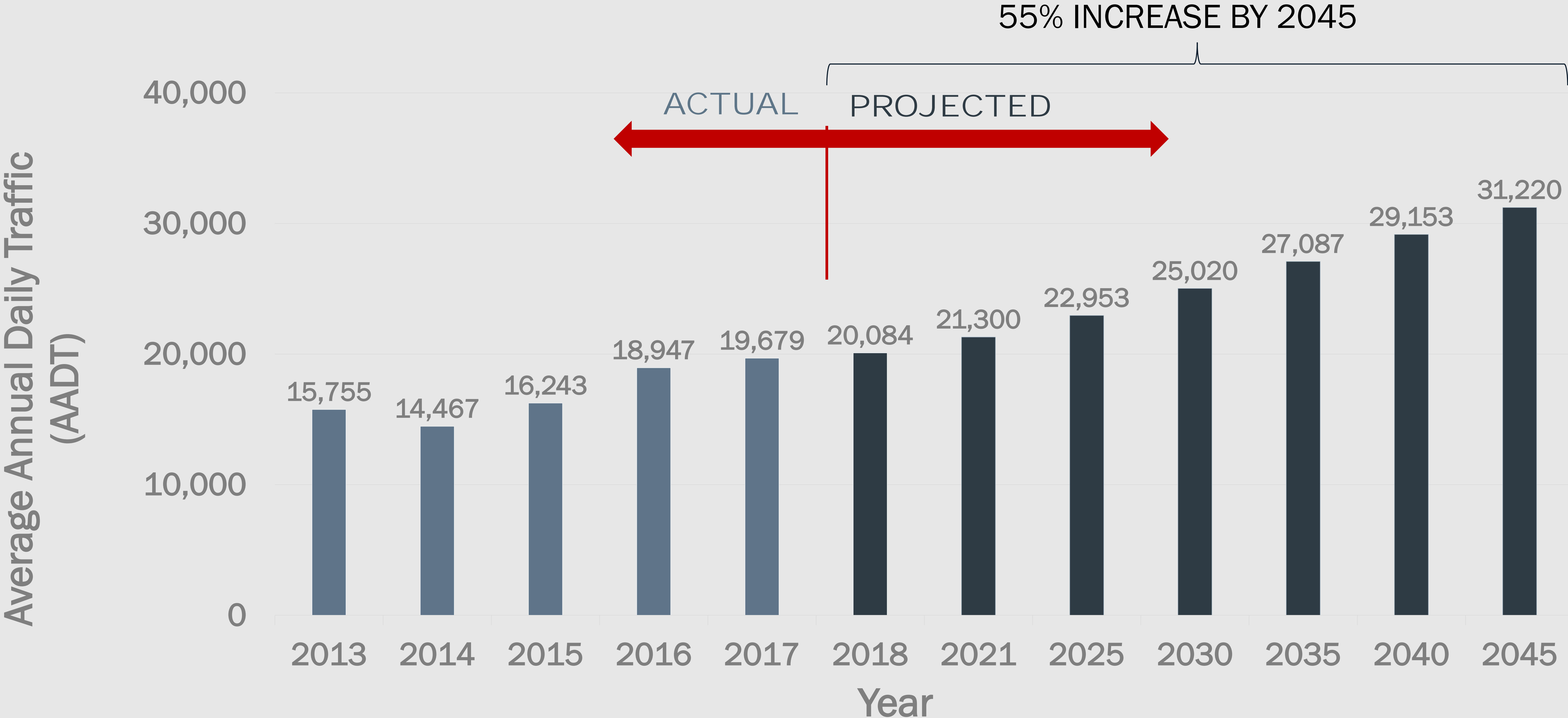


Military convoy between San Antonio and Camp Bullis
(ca. 1945/TxDOT)



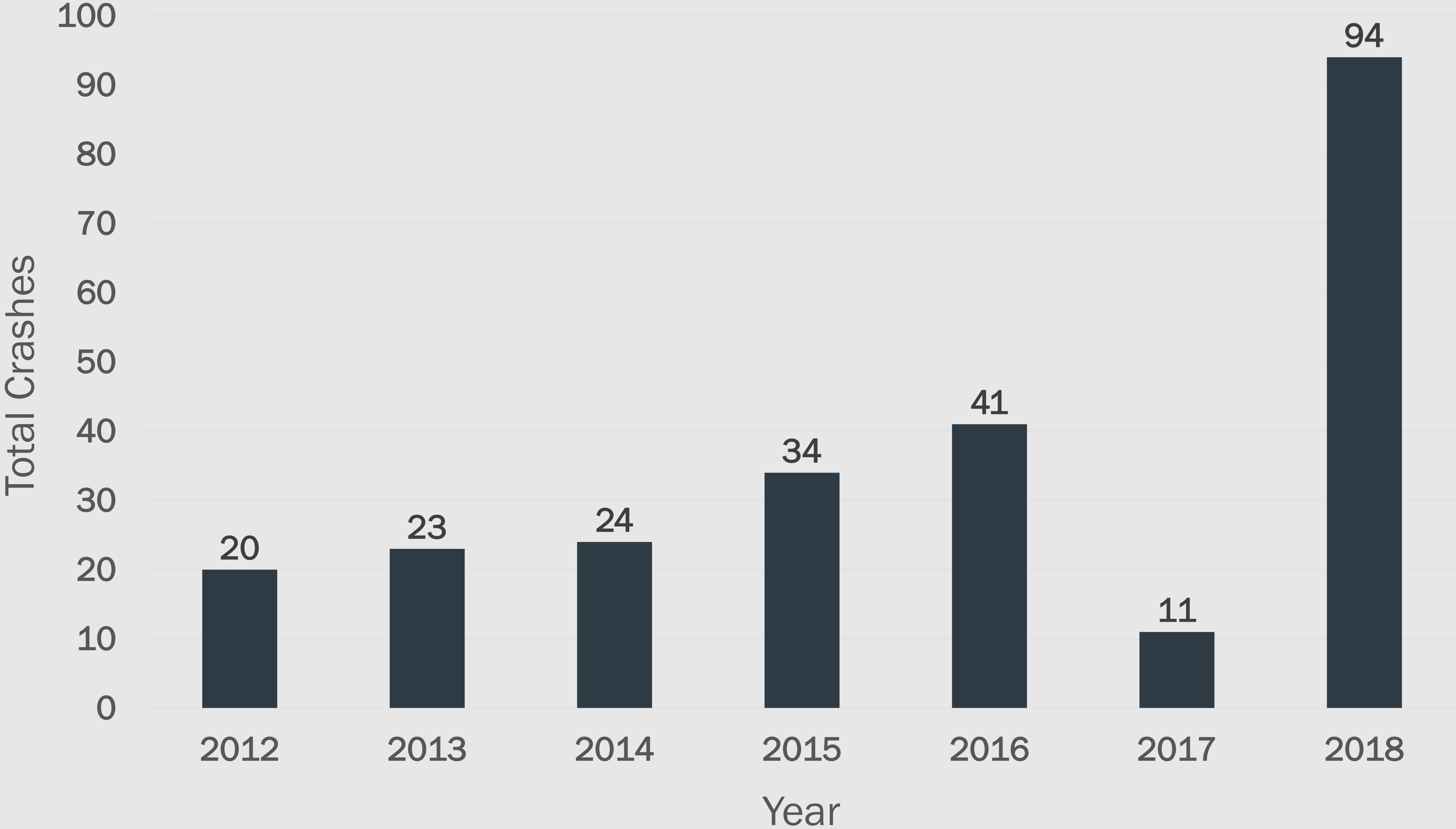
NW Military Hwy Near Cliffside Drive
(ca. 2017)

Traffic Projections



- 2013-2017 AADT traffic volumes from TxDOT Count Map
- 2018-2045 traffic volumes based on linear projections

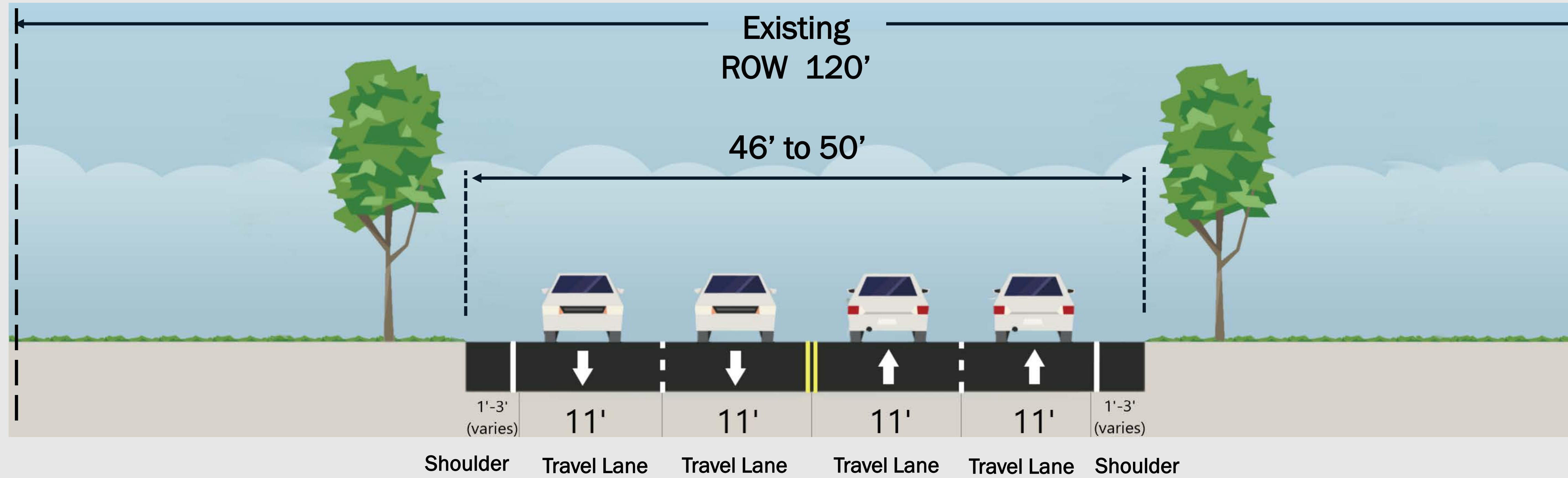
Crashes 2012 - 2018



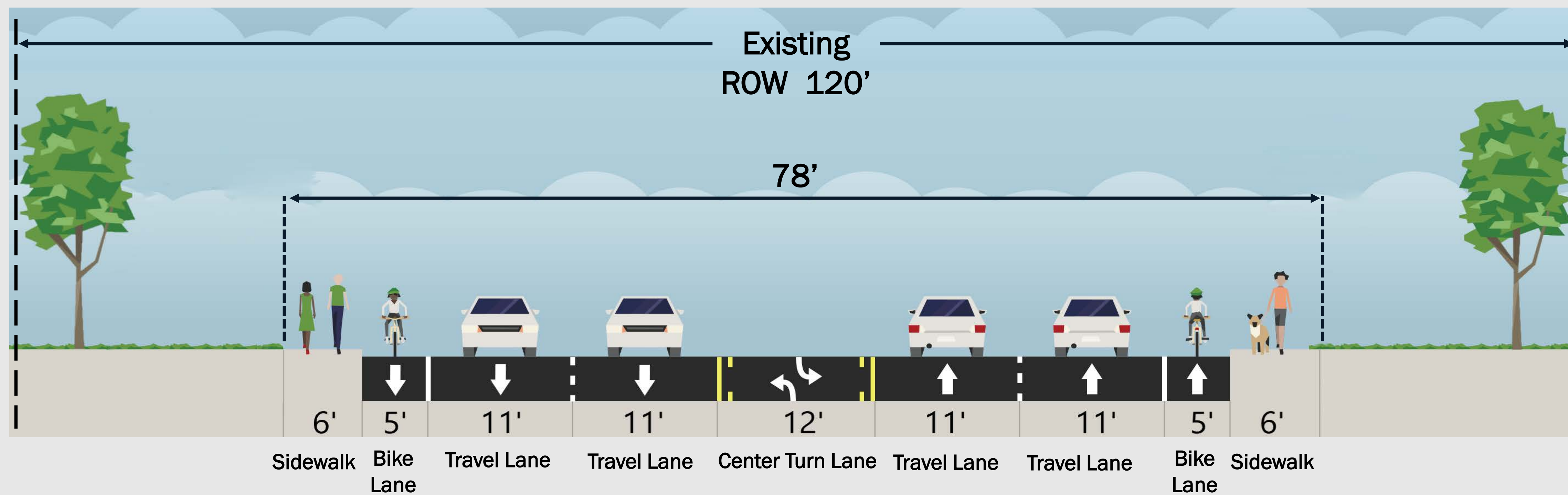
- Crash data from TxDOT Crash Report Information System (CRIS)

Typical Section

Existing



Proposed



Transit

- Coordinating with VIA Metropolitan Transit
- Accommodating improvements for bus stops

Utilities

- Coordinating utility relocations and will begin prior to road construction

Drainage

- Replacing existing corrugated metal pipes with reinforced concrete pipes that have a longer life span
- Utilizing storm sewers to collect water from roadway
- Adding drainage grates at driveways to collect water

Design Considerations

TxDOT and the City of Shavano Park have been working closely together to identify solutions that blend and maintain the unique character of the area.

Minimized Footprint by Utilizing:

- Curbs
- Short retaining walls for elevation changes
- Sidewalk located next to the road
- 12-foot continuous center turn lane

Driveways, Fencing, and Mailboxes:

- Coordinate driveways with property owners
- Design to minimize impact to gates and fences
- Coordinate mailboxes with property owners and USPS
- Utilize temporary community mailbox during construction



Near Cliffside Drive

Tree Considerations

In the right of way, trees are impacted to accommodate road construction improvements and sight distance. The design process includes solutions to preserve as many trees as possible by:

- Completing additional field work to verify types, sizes, locations, and potential impacts
- Utilizing a minimized footprint and short retaining walls
- Adjusting sidewalk locations where feasible
- Adjusting culverts to minimize impacts to root systems
- Utilizing tree protection during construction

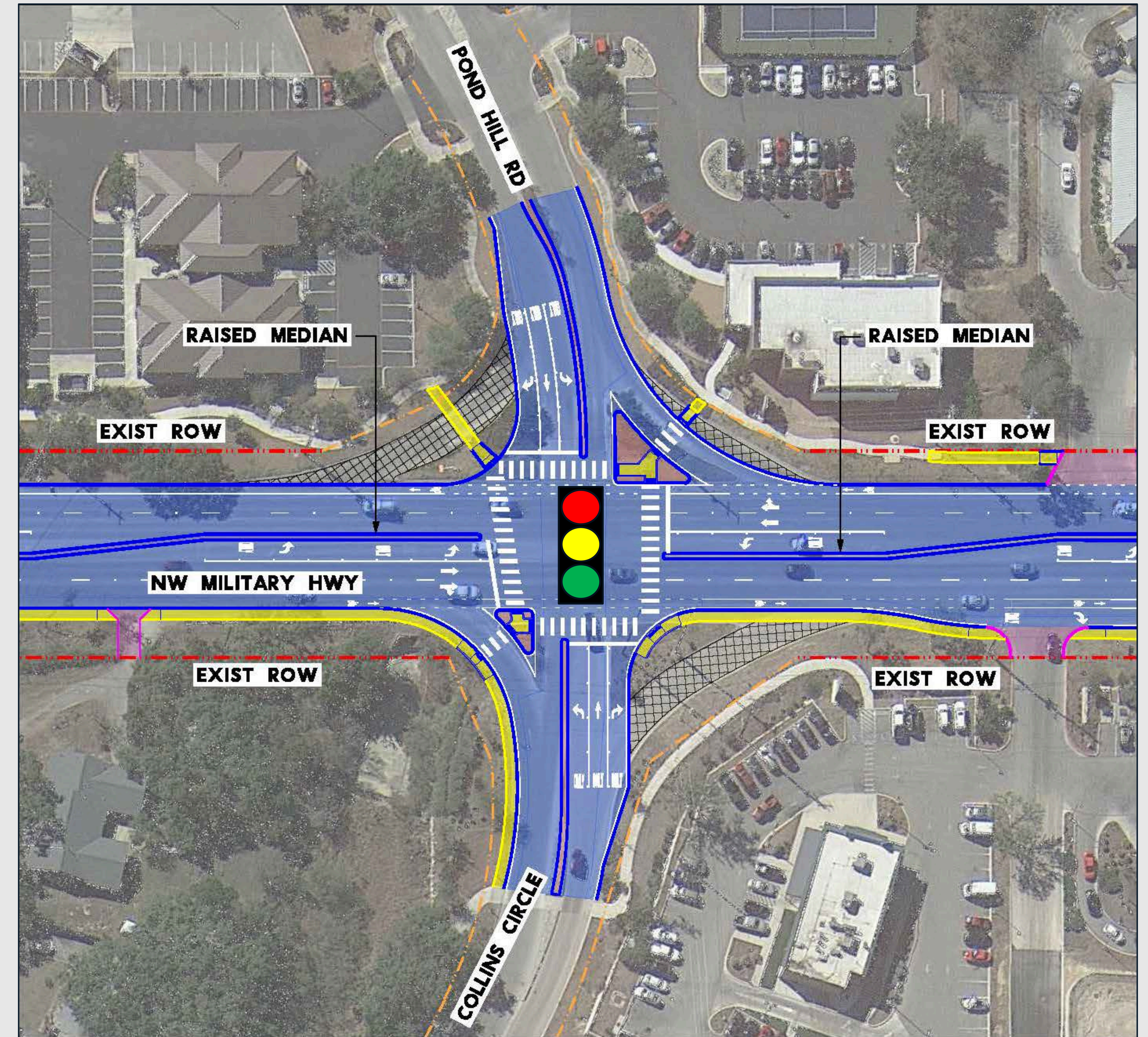


NW Military Hwy.

Intersection Improvements

Pond Hill Road

- Adding a traffic signal
- Installing a raised median along NW Military Hwy. (FM 1535) at Pond Hill Road/Collins Circle intersection
- Extending sidewalks and adding crosswalks



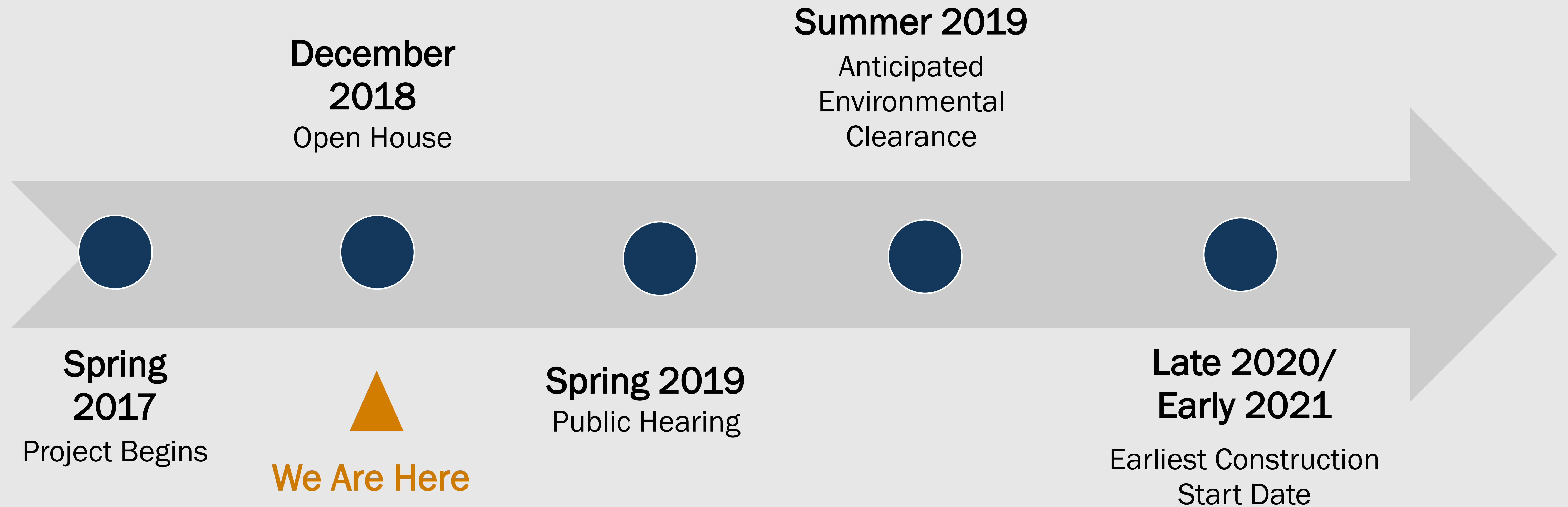
Environmental Considerations

Natural, Social, and Cultural Resources are being evaluated including:

- Air Quality
 - Archeological Sites and Cemeteries
 - Historic Resources
 - Natural Resources
 - Water Resources
 - Community Impacts Assessment
 - Indirect and Cumulative Impacts
 - Public Involvement
 - Traffic Noise
 - Hazardous Materials
- No additional Right of Way required

- Estimated construction cost is \$6.5 million
- Selected by the Alamo Area Metropolitan Planning Organization for federal and state funding.

Project Schedule



The project schedule is anticipated and subject to change.

Other Projects in the Area

FM 1535 Expansion Project

(from Loop 1604 to Shavano Ranch Road): TxDOT is planning for improvements including expanding from 2 to 4 lanes with a center-turn lane and raised median, sidewalks, and bicycle accommodations. The earliest construction is anticipated to begin in late 2019 with an 18-month duration.



Loop 1604 Turnaround: TxDOT is constructing a turnaround lane on Loop 1604 at NW Military Highway (FM 1535) for eastbound traffic to U-turn to travel westbound. Construction started in fall 2018 and is estimated to take approximately six months.



Comment Period open through December 31, 2018

Please share comments by:

- Submitting a comment card tonight
- Sharing verbally with the court reporter
- Sending comments by December 31, 2018
 - Mail: NW Military Hwy. Project
P.O. Box 5459, Austin, TX 78763
 - Email: NWMilitaryHwy@gmail.com



www.txdot.gov
Search
"NW Military Hwy"