

## SH 16 (Bandera Road) from I-410 to Loop 1604

TxDOT San Antonio District

Bexar County, Texas

### Project Overview

**Project Limits:** SH 16 (Bandera Road) from I-410 to Loop 1604

**Project Length:** Approximately 6.5 miles

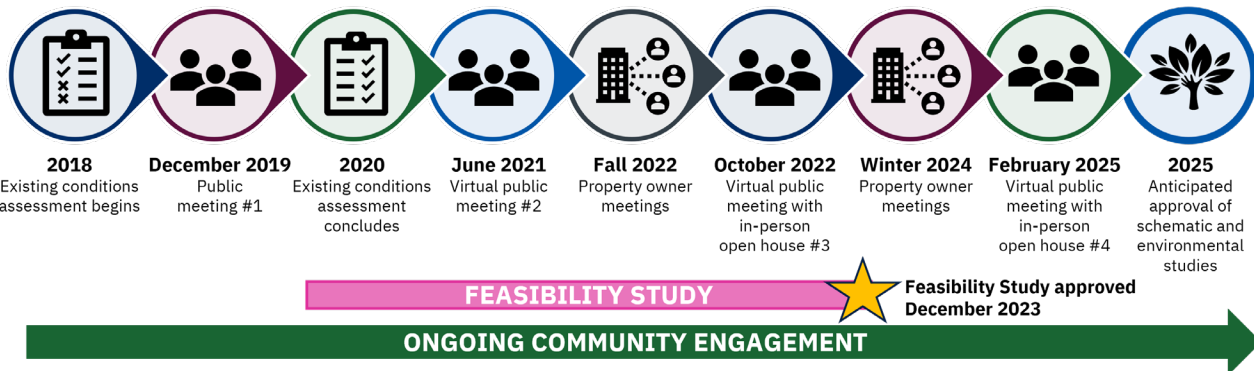
#### The proposed design includes:

- Converting 12 existing traditional signalized intersections to signalized restricted crossing U-turn (RCUT) intersections
- Shared-use paths for bicyclists and pedestrians
- Access management
- Opportunities for corridor placemaking by others



### Anticipated Project Timeline

*\* This timeline is subject to change.*



#### Notes:

- There is currently no funding for improving SH 16 (Bandera Road). TxDOT has begun coordination with regional partners to identify funding opportunities for the preferred Build Implementation Plan.
- Right-of-way acquisition and utility relocations would follow approval of the design schematic and environmental studies.
- Construction timeline has not yet been identified.

### The goals of this project are to:

- ✓ Improve mobility, safety, and community connectivity
- ✓ Reduce congestion on the SH 16 (Bandera Road) corridor
- ✓ Accommodate bicyclists and pedestrians

### Connect with TxDOT online:



Visit [www.txdot.gov](http://www.txdot.gov) and keyword search "SH 16 (Bandera Road)"  
 ◀ TxDOT.gov Hearings and Meetings Page for SH 16 (Bandera Road)

SCAN ME