

WELCOME

US 181

From Palm Park Blvd to Eagle Creek Ranch Blvd

Bexar and Wilson Counties, Texas | CSJ: 0100-02-070

OPEN HOUSE

Thursday, August 1, 2024, from 5 – 7 p.m.

St. Anthony Catholic Church & Event Hall

16505 Kilowatt Rd, Elmendorf, TX 78112

Available online Thursday, August 1, 2024, by 5 p.m.

- 1 Please sign-in
- 2 View exhibits
- 3 Ask questions and provide comments

National Environmental Policy Act Assignment to TXDOT: The environmental review, consultation, and other actions required by applicable Federal environmental laws for this project are being, or have been, carried-out by TxDOT pursuant to 23 U.S.C. 327 and a Memorandum of Understanding dated December 9, 2019 and executed by FHWA and TxDOT.

Language Accommodations (Adaptaciones de idioma)

The open house will be conducted in English, with Spanish-language materials available online and in-person.

La Reunión de Puerta Abierta se llevará a cabo en inglés, con materiales en español disponibles en línea y en persona.

Para un traductor de Español:

Si habla español y necesita ayuda o un traductor,

SOLICITE un miembro del equipo que hable español en la mesa de registro.

RECIBA un folleto en español sobre las exhibiciones en la mesa de registro.

VISITE nuestro sitio web para ver los materiales de la Reunión de Puerta Abierta en español. Visite TxDOT.gov y busque las palabras clave “US 181 from Palm Park.”



Title VI

Protecting your civil rights is good business

It is our policy to ensure that no person in the United States of America shall on the grounds of race, color, national origin, sex, age or disability be excluded from the participation in, be denied the benefits of, or otherwise be subjected to discrimination under any of our programs and activities.

The Department assures full compliance with Title VI of the Civil Rights Acts of 1964, the Civil Rights Restoration Act of 1987 and related statutes and regulations in all programs and activities.

Any person who believes they have been subjected to unlawful discriminatory practices under Title VI has the right to file a formal complaint. Any such complaint must be filed in writing or in person with the Texas Department of Transportation, Civil Rights Division within 180 days following the date of the alleged discriminatory action.

Contact Us:
Civil Rights Division
125 East 11th Street
Austin, Texas 78701-2483
(512) 416-4700
CivilRights@TxDOT.gov



www.txdot.gov



Título VI

Proteger sus derechos civiles es un buen negocio

Es nuestra política garantizar que ninguna persona en los Estados Unidos de América sea excluida de la participación en, se le niegue el beneficio de, o de otra manera sea sometida a la discriminación bajo cualquiera de nuestros programas y actividades por motivos de raza, color, origen nacional, sexo, edad o discapacidad.

El Departamento asegura el pleno cumplimiento del Título VI de la Ley de Derechos Civiles de 1964, la Ley de Restauración de Derechos Civiles de 1987 y los estatutos y normas conexas dentro de todos los programas y actividades.

Cualquier persona que crea que ha sido sometida a prácticas discriminatorias ilegales bajo el Título VI tiene el derecho de presentar una denuncia formal. Cualquier denuncia de este tipo debe presentarse por escrito o en persona ante la División de Derechos Civiles del Departamento de Transporte de Texas dentro de los 180 días siguientes a la fecha de la presunta acción discriminatoria.

Comuníquese con nosotros:
Civil Rights Division
125 East 11th Street
Austin, Texas 78701-2483
(512) 416-4700
CivilRights@TxDOT.gov



www.txdot.gov

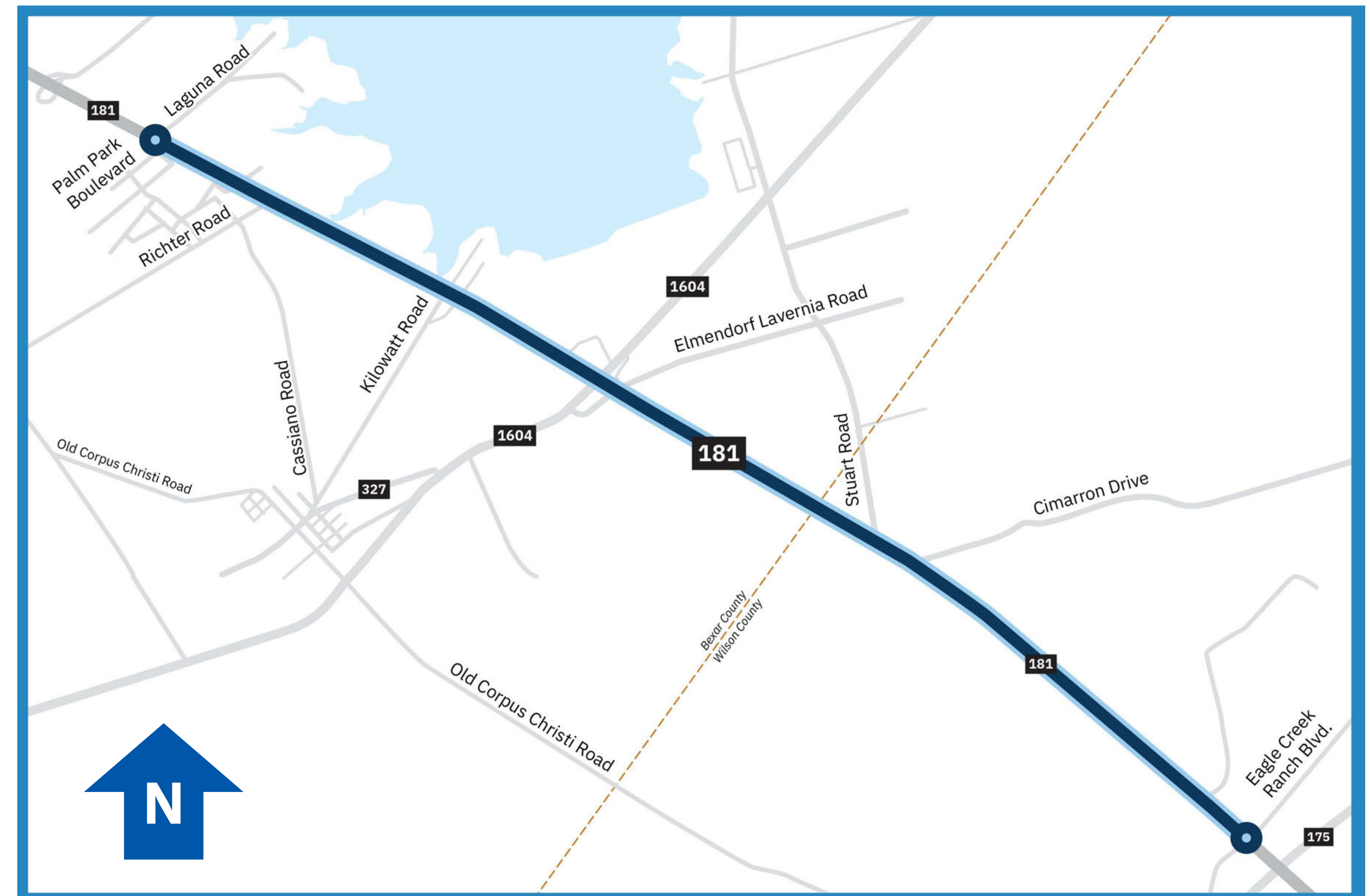


Project Overview

Project Details

US 181 From Palm Park Blvd to Eagle Creek Ranch Blvd

- **PROJECT LENGTH:**
Approximately seven miles
- **COUNTY:** Bexar and Wilson
- **PURPOSE:** Improve safety and reduce conflict points
- **PROPOSED IMPROVEMENTS:**
 - Close median crossovers and install unsignalized Restricted Crossing U-turn (RCUT) lanes
- **RIGHT OF WAY:** No additional right of way would be needed



Project Purpose

What are the issues?

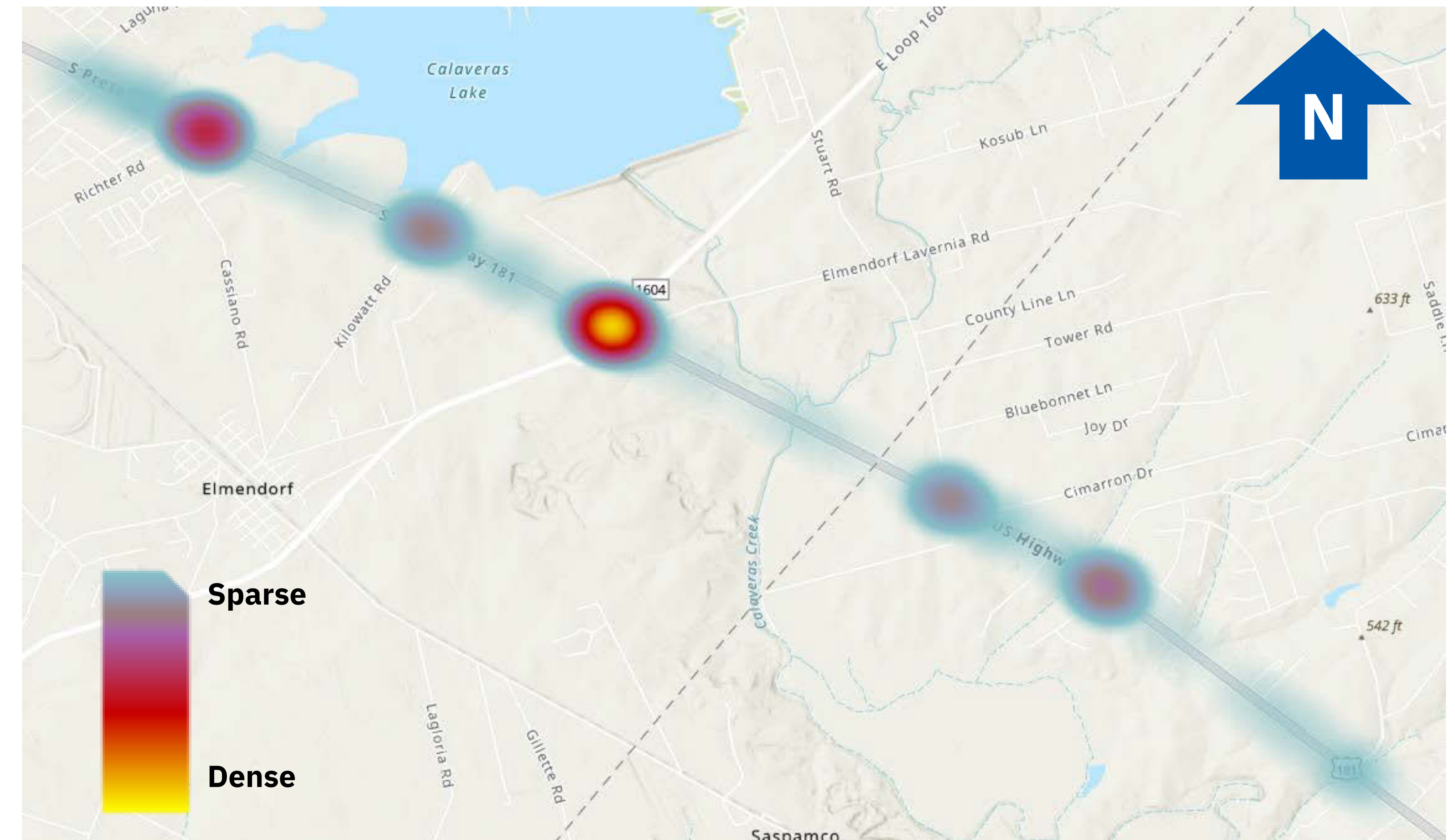
- **Numerous crashes and severe and fatal crashes**
- **Conflicting turning movements at median openings**
- **Higher speed roadway with side streets**

What are we trying to do?

- **Improve safety**
- **Control turning movements to reduce delay**
- **Reduce injury and fatal crashes**

Why and Where to Consider a Restricted Crossing U-Turn

- ✓ Play critical role in the safety and operation of a roadway
- ✓ Rural multi-lane divided highways with wide streets
- ✓ High crash locations or where it is desirable to limit left turns to improve safety
 - Clear safety benefit



US 181 Crash Heat Map

Esri, NASA, NGA, USGS, FEMA, Texas Parks & Wildlife, CONANP, Esri, TomTom, Garmin, Foursquare, SafeGraph, GeoTechnologies, Inc, METI/NASA, USGS, EPA, NPS, USDA, USFWS

Crashes from 2018 – 2023

What is a Restricted Crossing U-Turn (RCUT)?

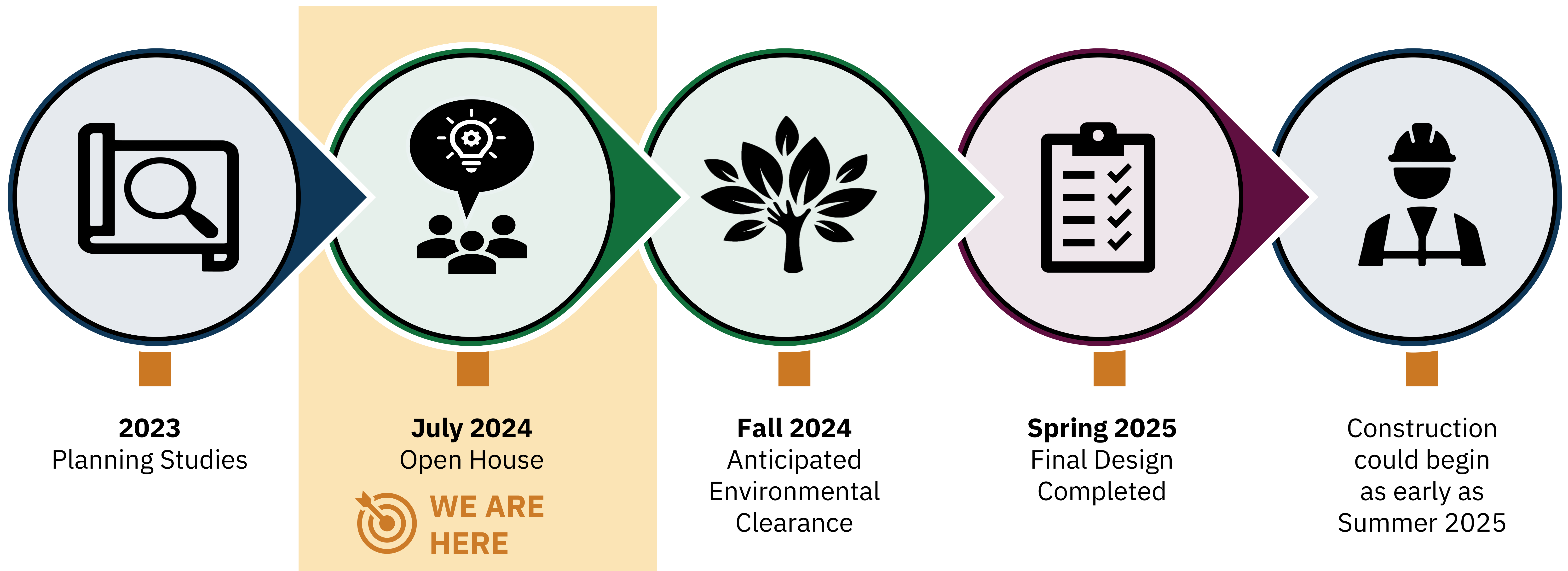
An intersection design that restricts left turns at intersections but allows the movement to occur at a new U-turn location on either side. Traffic from incoming and outgoing side streets must turn right first and then make a U-turn at the RCUT location. Acceleration and deceleration lanes are provided at these locations.



STATION

Timeline and Next Steps

US 181 Estimated Project Timeline



This timeline is subject to change.

Next Steps:

- Document, evaluate, and address public input
- Collect and analyze additional data
- Refine proposed roadway design

Connect with TxDOT Online

- Learn more
- Send input



TxDOT.gov
Hearings and
Meetings Page
for US 181 from
Palm Park

SCAN ME

3 STATION

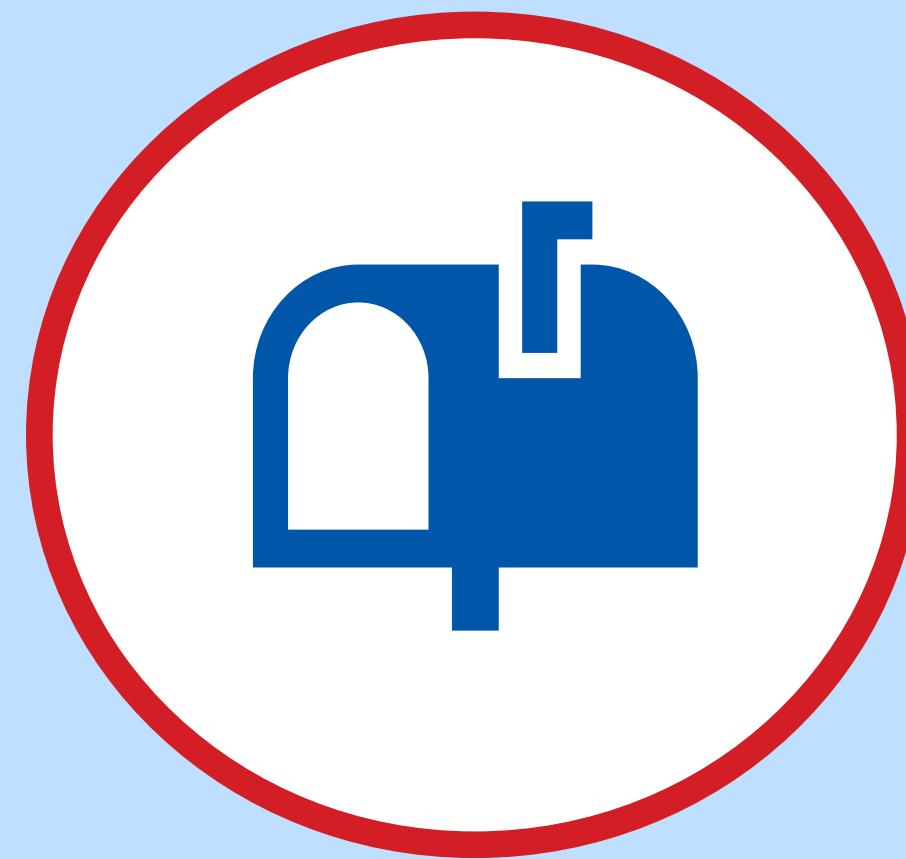
**Provide
Your Input**

How to Comment



Comment Form

Submit a comment form online or in-person. You can access the online comment form by scanning the QR code or visit www.txdot.gov and keyword search “US 181 from Palm Park”



Mail

Submit a comment by mail to:
US 181 Palm Park Project Team
C/O Poznecki-Camarillo, LLC
4801 Northwest Loop 410, Ste. 108,
San Antonio, TX 78229

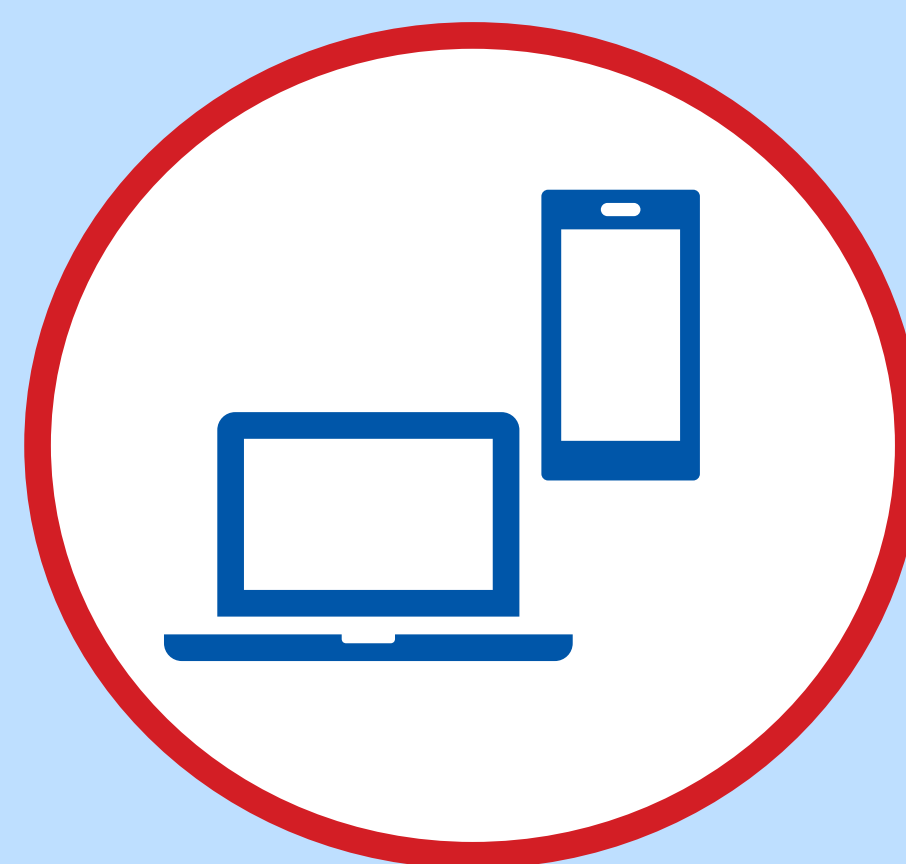
**Please submit
or postmark
comments by:

Thursday,
August 15, 2024**



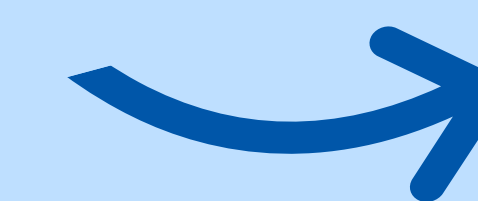
E-mail

Submit a comment to:
estory@pozcam.com



Online

Visit www.TxDOT.gov and keyword search “US 181 from Palm Park, ” or scan the QR code to access the virtual comment form



TxDOT.gov
Hearings and
Meetings Page
for US 181 from
Palm Park



Design Schematic