



US 281

AT BASSE ROAD AND JONES MALTSBERGER ROAD

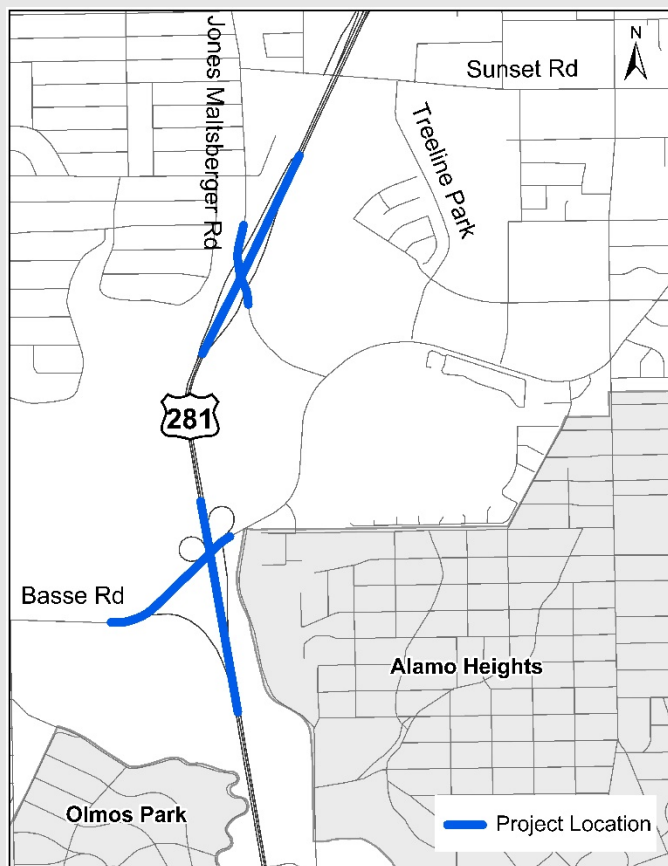
SAN ANTONIO

Open House
October 18, 2018
5:00 p.m. – 7:00 p.m.

Alamo Heights United
Methodist Church
825 E Basse Road
San Antonio, Texas 78209



Project Overview



- Collaborative effort between TxDOT and the City of San Antonio
- Two interchange improvements
- Provide full access to US 281 from Basse Road by adding Northbound entrance ramp and Southbound exit ramp and partial Displaced Left Turn (DLT)
- Reconstruct Jones Maltsberger Road interchange to a Diverging Diamond Interchange (DDI)
- All construction would occur within existing State Right-of-Way

- Community Impacts
- Historic Resources
- Archeological Resources
- Air Quality
- Traffic Noise
- Waters of the U.S./Wetlands
- Floodplains
- Threatened and Endangered Species
- Hazardous Materials

Project Next Steps

Schematic Design
and Preliminary
Environmental Study

Host
Open
House

Consider Public
Comments and
Update Schematic
Design

Final Design
&
Environmental
Clearance

Construction

**FALL
2017**

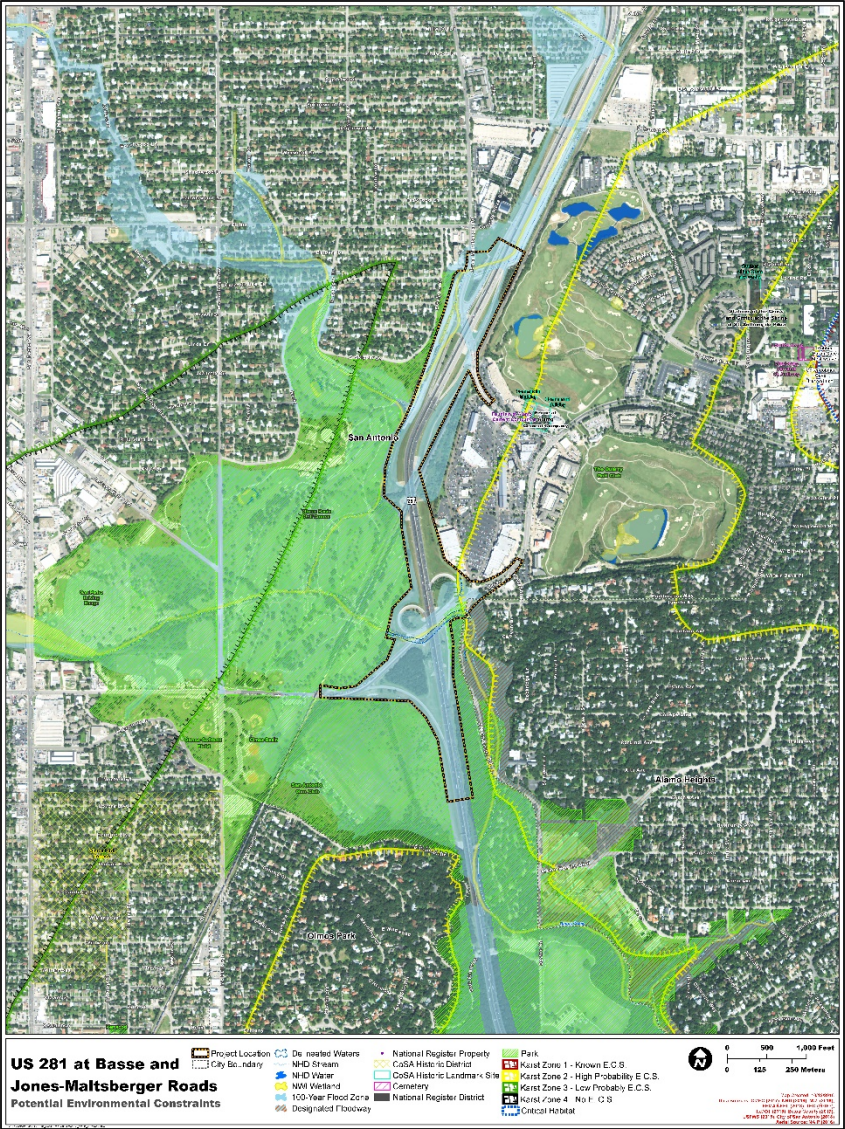
TODAY

**FALL
2018**

TBD

TBD

Environmental Constraints



Traffic Improvements: US 281 at Basse Road

- Adds access to and from Basse Road to US 281
- Provides protected movements from exit ramps and at adjacent Jones Maltzberger Road intersection to improve safety
- Consolidates existing northbound exits and southbound entrance ramps to and from Basse Road to US 281
- US 281 northbound exit to east Basse Road improvement reduces expected wait time by over 3 minutes (Design Year 2042)



Traffic Improvements: US 281 at Jones Maltzberger Road

- Wait times at Jones Maltzberger Road intersections are reduced by 60 seconds in the afternoon and Saturday peak periods with Diverging Diamond Interchange (DDI) compared to Conventional Improvements (Turn Bays, Capacity, Signal Timing)

Intersection	Measure of Effectiveness	Existing (2017)		Conventional Improvements (2042)		Diverging Diamond Interchange (2042)	
		Afternoon	Saturday	Afternoon	Saturday	Afternoon	Saturday
Jones Maltzberger Rd at US 281 NBFR	Delay (s)	37.9	32.4	102	99	32	31
Jones Maltzberger Rd at US 281 SBFR	Delay (s)	173.2	75.6	93	83	24	26

Funding for Project Construction is not currently identified

Estimated Construction Cost:

- Basse Road: \$6.8 Million
- Jones Maltsberger Road: \$5.0 Million



Provide Your Comments

Options for Commenting

1. Complete a written comment card
2. Email comments to: US281_Basse_JonesMaltsberger@emailatg.com
3. Provide verbal comments onsite to court reporter
4. Mail comments to: **ATG Alliance Transportation Group**
Attn: Eric Galindo, P.E.
11500 Metric Blvd, Suite 150
Austin, TX 78758

Deadline for comments : November 2, 2018

- For more information please visit www.txdot.gov and use keywords “US 281 Basse Road”

Thank You for Your Participation!



The environmental review, consultation, and other actions required by applicable Federal environmental laws for this project are being, or have been, carried-out by TxDOT pursuant to 23 U.S.C. 327 and a Memorandum of Understanding dated December 16, 2014, and executed by FHWA and TxDOT