

An aerial, long-exposure photograph of a highway interchange. The image shows multiple lanes of traffic moving in different directions, creating bright, blurred light trails in yellow, orange, and white. The perspective is from a high angle, looking down at the road. A blue rectangular box is overlaid on the center of the image, containing the title text.

**USDOT MEANINGFUL PUBLIC
INVOLVEMENT GUIDE**
OCTOBER 2022

WHAT IS IT?

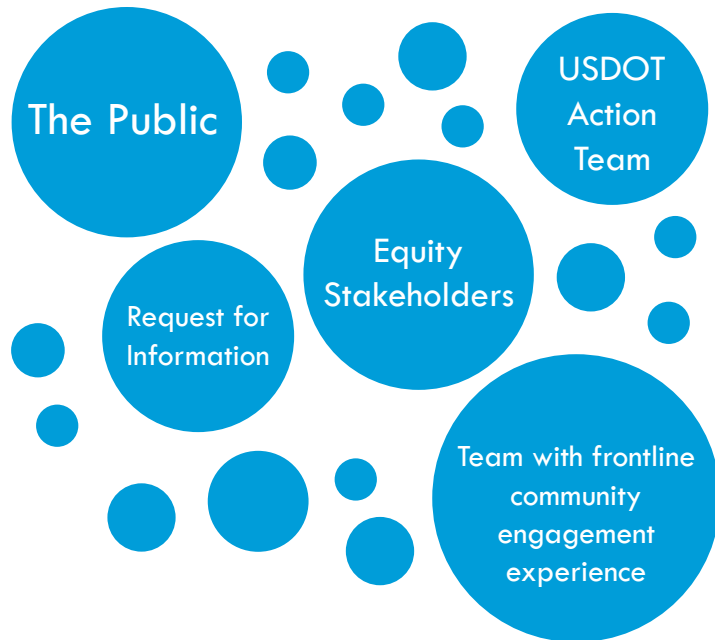
- A **set of promising practices** to help transportation practitioners across *all modes* incorporate meaningful public involvement into each stage of the transportation decision-making process and project lifecycle.
- A **guide** to help USDOT funding recipients meet the requirements of Title VI of the Civil Rights Act of 1964, the National Environmental Policy Act of 1969, planning regulations, and other existing requirements.
- A **product** of [USDOT's Equity Action Plan](#) to help individuals and communities have a greater voice in transportation decisions affecting them.



<https://www.transportation.gov/public-involvement>

HOW WAS IT CREATED?

Inputs Collected From...



Gaps Addressed

Use of one-size-fits-all strategies

Lack of accountability for community inputs

Gaps identified in [USDOT's Equity Action Plan](#)

Guide Developed



Available on [USDOT's website](#)

WHAT IS MEANINGFUL PUBLIC INVOLVEMENT?

In the guide, USDOT defines meaningful public involvement as a process that:



Proactively seeks full representation from the community



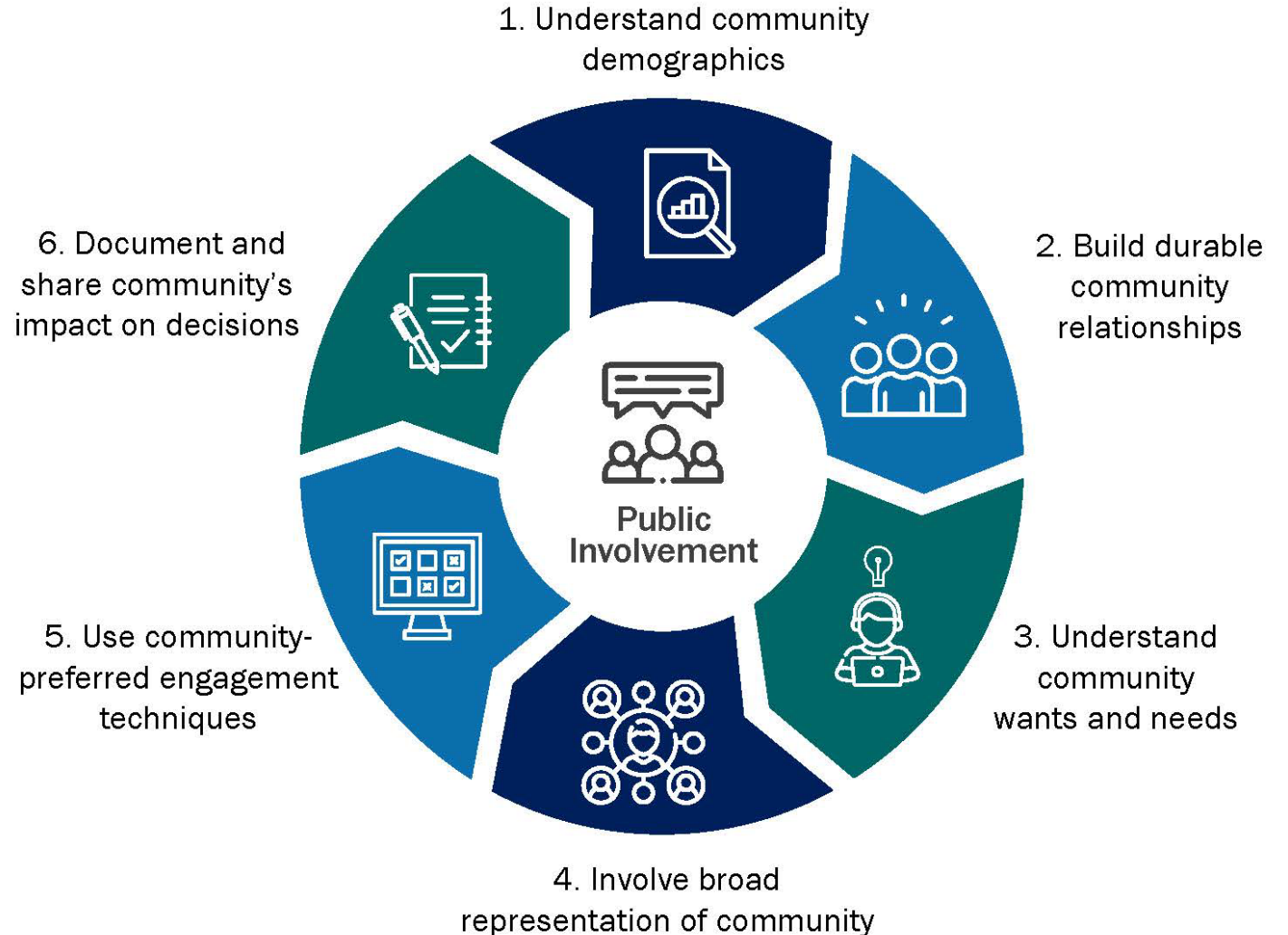
Considers public comments and feedback



Incorporates that feedback into a project, program, or plan

WHAT IS MEANINGFUL PUBLIC INVOLVEMENT?

A **process** that proactively seeks full representation from the community, considers public comments and feedback, and incorporates that feedback into a project, program, or plan.



WHAT'S IN THE GUIDE?

Core content helps leaders in all modes of transportation in various roles – including policy, planning, engineering, operations, civil rights, grants and program management, environmental justice, and public involvement – understand meaningful public involvement, why it's important, and how to build organizational capacity for it.



Addressing Critical
Gaps



Meaningful Public
Involvement in
Transportation Decision-
Making



Building Public
Involvement Capacity



Measuring the Success of
Public Involvement
Strategies



WHAT'S IN THE GUIDE?

Technical appendices include *Techniques for Meaningful Involvement* and real-world exemplars to help practitioners consider who makes up their community and how to effectively engage a broad representation of community members, considering factors such as:



Time



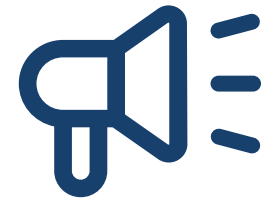
Funding



Audience Size



Language
Needs



Expanding
Awareness

HOW CAN THIS GUIDE HELP YOU LEAD CHANGE IN YOUR ORGANIZATION?

- **Communicate** with the public and stakeholders about the importance of meaningful public involvement and how you intend to approach it.
- **Strengthen** public involvement capacity within your organization and your community.
- **Improve** project outcomes and ensure that projects equitably meet the needs of impacted communities.
- **Avoid** costly re-work and delays.



HOW CAN THIS GUIDE HELP PRACTITIONERS IN YOUR ORGANIZATION?

- **Communicate** with leadership about the importance of meaningful public involvement.
- **Identify** public involvement techniques for your projects that are responsive to your community's needs.
- **Understand** the public involvement requirements of Title VI, NEPA, and other statutes and regulations.
- **Measure** the success of public involvement programs and activities.



HOW CAN THIS GUIDE HELP ADVOCATES AND COMMUNITY LEADERS?

- **Communicate** the importance of meaningful public involvement to USDOT funding recipients.
- **Engage** with USDOT funding recipients to hold them accountable for including your community's voice in transportation decision-making.



In 2016, USDOT created a related resource, [Leadership Academy](#), for stakeholders who have limited experience with the transportation decision-making process to learn how to engage at the local, regional, state and federal levels. We will be updating this related resource in the coming months and welcome your inputs via equity@dot.gov.

CALLS TO ACTION

Visit our website for more information: <https://www.transportation.gov/public-involvement>



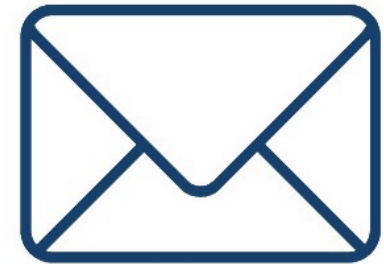
Read and
use the
guide



Sign up for
training



Talk to us at
conferences



Provide
feedback &
exemplars