



PROJECT BROCHURE

# I-10 TEXAS CORRIDOR IMPLEMENTATION PLAN



# I-10 Texas Corridor Study

Interstate 10 (I-10) is a vital east-west interstate corridor of national importance, serving as a national defense priority corridor and providing important nationwide coast-to-coast freight links. It runs approximately 2,400 miles from State Route (SR) 1 in Santa Monica, California, to I-95 in Jacksonville, Florida.

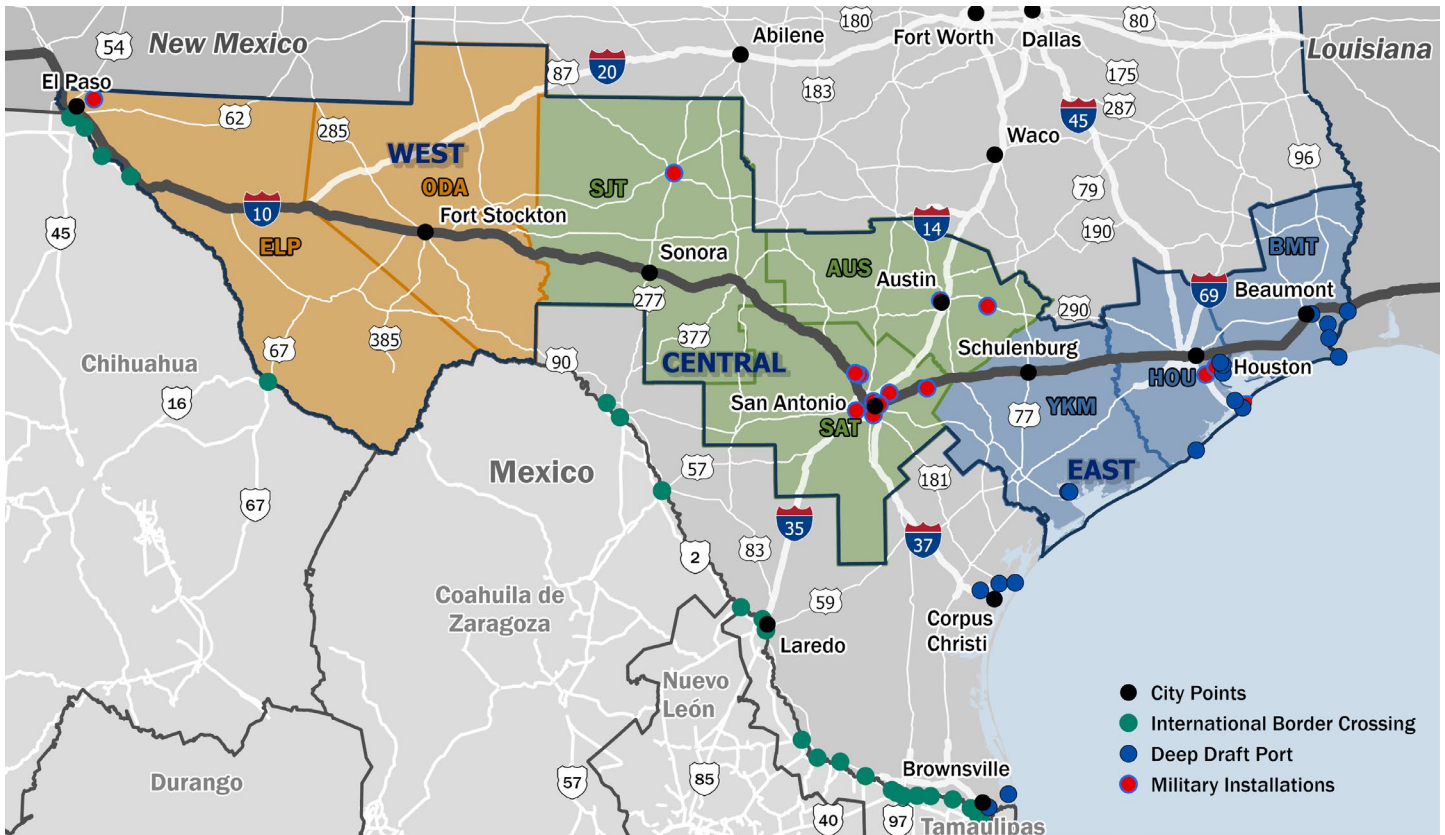
The Texas portion of I-10 spans 880 miles from the New Mexico state line to the Louisiana state line. It crosses eight Texas Department of Transportation (TxDOT) districts, five Metropolitan Planning Organizations (MPOs), eight Council of Government (COG) boundaries, 25 counties, and 45 cities, including the metropolitan areas of El Paso, San Antonio, and Houston, and has critical importance to the international, national, and state economies. I-10 is the only east-west interstate corridor that connects international border crossings in the West, military installations, state and national parks, and major maritime ports on the Gulf Coast in the East. I-10 is a lifeline corridor that connects rapidly growing Texas communities and keeps commerce moving.

TxDOT initiated the I-10 Texas Corridor Study to identify, assess, and prioritize proposed improvement strategies to meet future transportation needs along the corridor. Because I-10 is such an extensive corridor, the study area is segmented into three regions – West, Central, and East.

### Study Purpose

To identify transportation needs and prioritize guidelines, programs, plans, and projects to improve safety, connectivity, and mobility along the I-10 Texas Corridor.

## I-10 Texas Corridor Study Extent



Source: I-10 Texas Corridor Study Team

## Importance of I-10

- I-10 serves rural and urban communities across Texas, including Big Bend Country, the Hill Country, and the Gulf Coast.
- Approximately 9.3 million people live along the corridor, with 81% residing in El Paso, Bexar, and Harris Counties.
- Industries along the corridor employ approximately 4.6 million people, roughly 37% of Texas' total employment.
- I-10 provides border-to-border connectivity and direct connections to ports and other critical highways, making it a vital freight corridor.
- The corridor serves major tourism destinations, cultural and historic sites, and numerous state parks.
- I-10 is a national defense priority corridor connecting major military installations to the Ports of Beaumont and Port Arthur.

## Stakeholder and Public Engagement

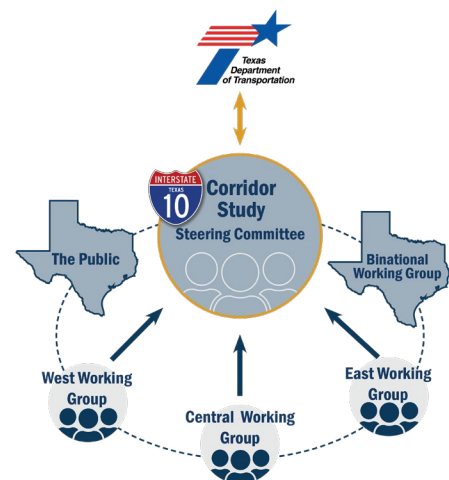
This study was guided by a Corridor Steering Committee with input from Segment Working Groups, TxDOT Districts and Divisions, and the public and private sectors. Key stakeholders included:

- County Judges and City Mayors (or their representatives)
- Metropolitan Planning Organizations
- Local elected officials & representatives from regional agencies
- Economic development organizations
- Transportation advocacy groups
- Freight, energy sector, port, and trucking industry members
- Texas Freight Advisory Committee, Border Trade Alliance, adjacent states, and Mexico
- Travelers and other members of the public

Public input was collected through an online survey which received 2,868 responses and 5,911 mapped comments. Input and data compiled from stakeholders and the public helped identify and prioritize future improvements.

## Study Considerations

The I-10 Texas Corridor Study considered a number of issues, needs and improvements, including the following:



## Vision

The I-10 Texas Corridor Study stakeholders developed a vision for the I-10 Texas Corridor to define how they see the corridor in the future:

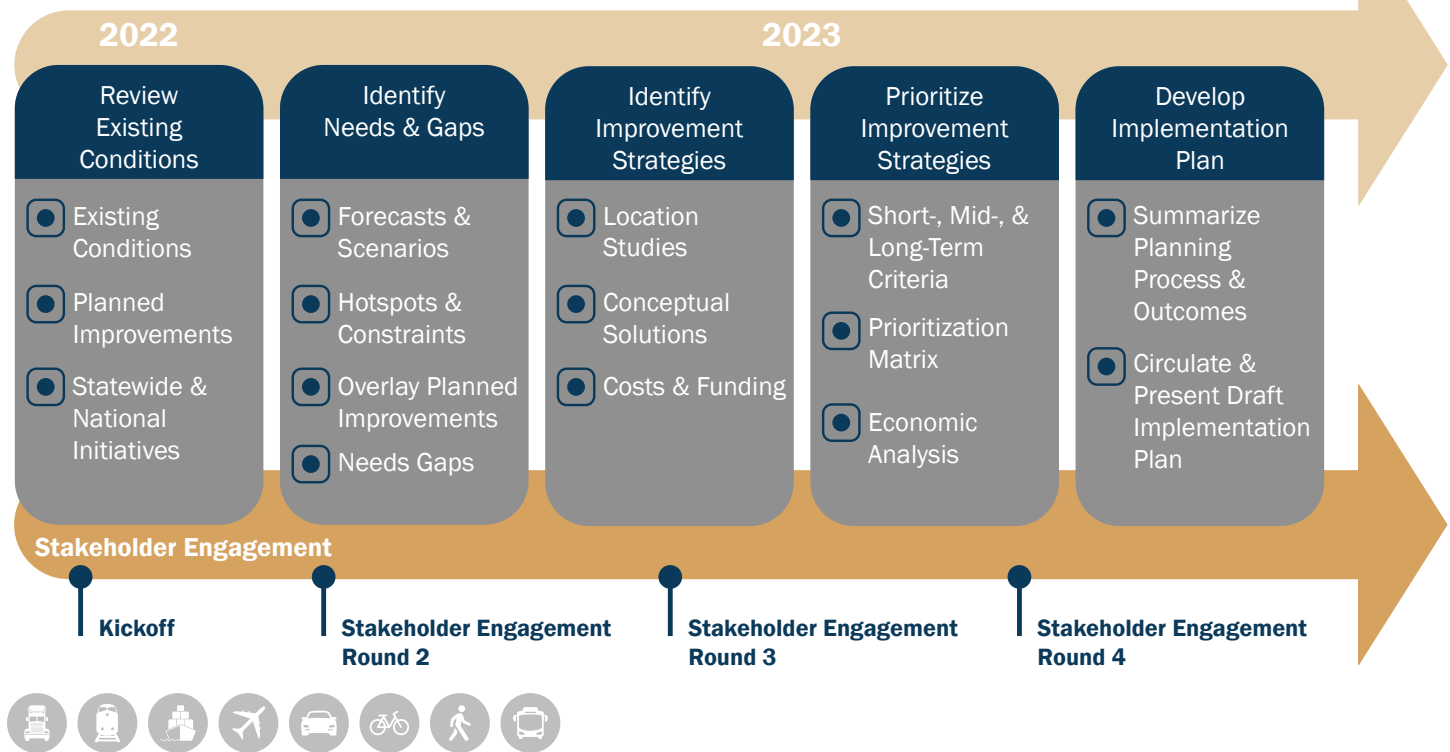
**I-10 is an ever-improving lifeline corridor for Texas. It provides safe, reliable, multimodal transportation from state line to state line. I-10 is accessible and well-maintained, connecting communities and supporting the national and state economies by efficiently moving people and goods within rural and urban areas and throughout the state and beyond.**

## Goals

To meet the purpose, the I-10 Texas Corridor Study stakeholders developed

	<b>Enhance</b>	Mobility to support safer, more efficient, and reliable travel along the I-10 corridor.
	<b>Improve</b>	Safety for passenger and freight travel on the I-10 corridor.
	<b>Increase</b>	Resiliency and connectivity between communities, borders, ports, and activity centers along I-10 and with other critical highways on the state roadway network.
	<b>Maintain</b>	The I-10 corridor in a state of good repair.
	<b>Invest</b>	In the I-10 corridor to support the state and national economies and increase opportunities for Texas businesses, employees, and communities to grow and prosper.
	<b>Preserve &amp; Protect</b>	The character, culture, history, values, and natural resources of the communities along the I-10 corridor.
	<b>Provide</b>	A broad range of reliable, innovative, and multimodal transportation options and technologies along the I-10 corridor to meet diverse user needs and future demand.

## I-10 Texas Corridor Study Planning Approach



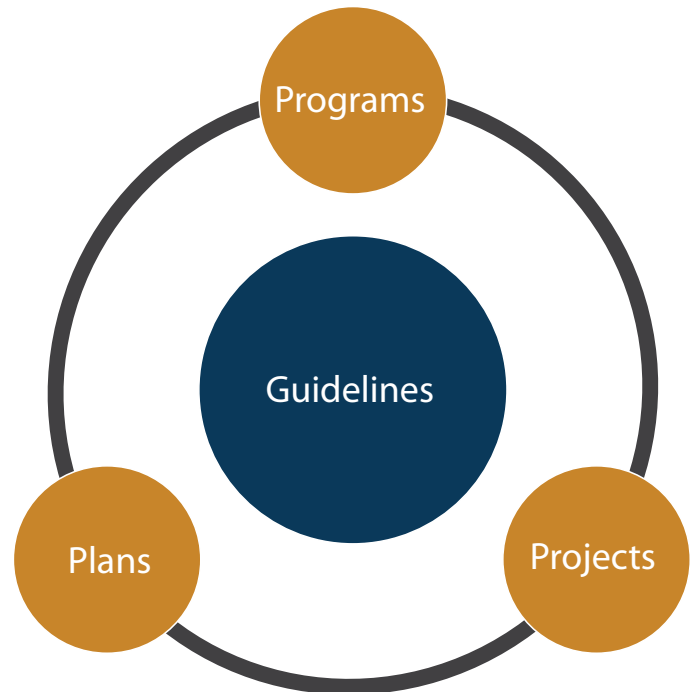
## I-10 Texas Corridor Study Recommendations

The development of the multimodal recommendations was based on a review of applicable national, state, regional, and local plans and initiatives, high-level technical analysis using the Corridor Evaluation Tool (CET), and extensive stakeholder and public engagement processes. The I-10 Texas Corridor Study multimodal recommendations are organized into four categories: guidelines, programs, plans, and projects, defined below.

- **Guidelines** are broad recommendations to guide decisions on future corridor investments based on identified goals. These may act as best practices and recommended considerations for system planning and implementation of programs, initiatives, plans, and projects. The I-10 Texas Corridor Study has grouped guidelines into **four** categories:

1. Infrastructure
2. Technology and Communications
3. Multimodal Passenger Travel
4. Multimodal Freight

- **Programs** are sets of related initiatives or infrastructure investments designed to advance identified guidelines. Programs are either strategic efforts to improve processes or implement concepts or are related projects with similar challenges. The I-10 Texas Corridor Study recommends **40 program strategies and improvements** to address transportation infrastructure and public engagement needs.
- **Plans** are broad and/or conceptual-level initiatives that require further study and refinement to advance identified guidelines. The I-10 Texas Corridor Study has identified a total of **48 plans** for I-10 and **nine priority corridors** (i.e. connecting and parallel corridors) that are important for connectivity, mobility, and resiliency. The priority corridors are recommended to be studied to confirm issues and needs. If planning studies are ongoing, the recommendation is to advance through the feasibility phase.
- **Projects** are specific initiatives or infrastructure investments with defined geographic limits, scopes, and cost estimates, to advance identified guidelines. **30 projects** at a cost of **\$9.4 billion** are recommended for the I-10 Texas Corridor Study



### Find Out More and Get Involved

To review the full study and find out how to get involved in improving I-10, visit the [study website](#), or visit [TxDOT.gov](#), and keyword search “I-10 Texas Corridor Study.”





## I-10 Texas Corridor Implementation Plan

**For more information:**

Cary Karnstadt  
Project Development Manager  
Transportation Planning & Programming Division  
512.803.4230  
Cary.Karnstadt@txdot.gov

Lorena Echeverria de Misi, P.E.  
Manager, Corridor Planning Branch  
Transportation Planning & Programming Division  
512.696.3206

Texas Department of Transportation  
6230 E Stassney Lane  
Austin, TX 78744

