

I-14 System in Texas Implementation Strategy Fact Sheet

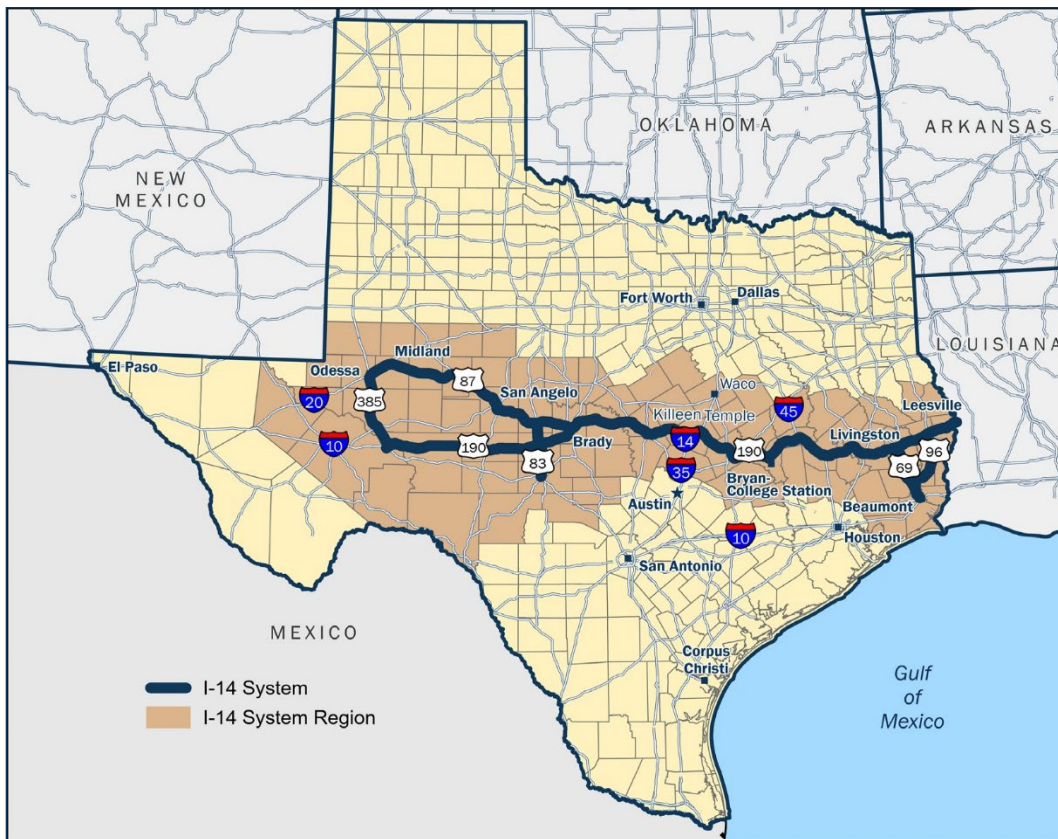


Overview

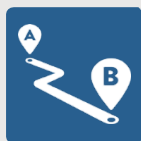
The Interstate 14 (I-14) system in Texas is part of an extended corridor across Texas, Louisiana, Mississippi, Alabama, and Georgia that will be upgraded to interstate standards. This new interstate highway system, authorized by Congress, will improve mobility between urban and rural areas, military installations, maritime ports and economic sectors, including freight, energy, timber and agriculture. This new interstate system would enhance connectivity in the United States. It would improve mobility between urban and rural population centers, military installations, maritime ports, and economic sectors including energy, freight, timber, and agriculture. The corridor is planned to be developed incrementally through a series of upgrades to interstate standards. In Texas, the I-14 system is projected to be over 1,000 miles long once it is designated and added to the Interstate Highway System. To date, approximately 25 miles of highway have been designated as I-14 from I-35 in Bell County to US Highway 190E in Coryell County, in the Killeen-Temple region.

Location Map

Interstate Highways In Texas



Benefits of an Interstate Highway



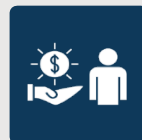
Improve Safety, Mobility, and Connectivity



Increase Access to Markets



**Improve Freight Movement
Facilitate the Flow of Goods and International Trade**



Create Economic Opportunities



Alleviate Congestion and Improve Reliability



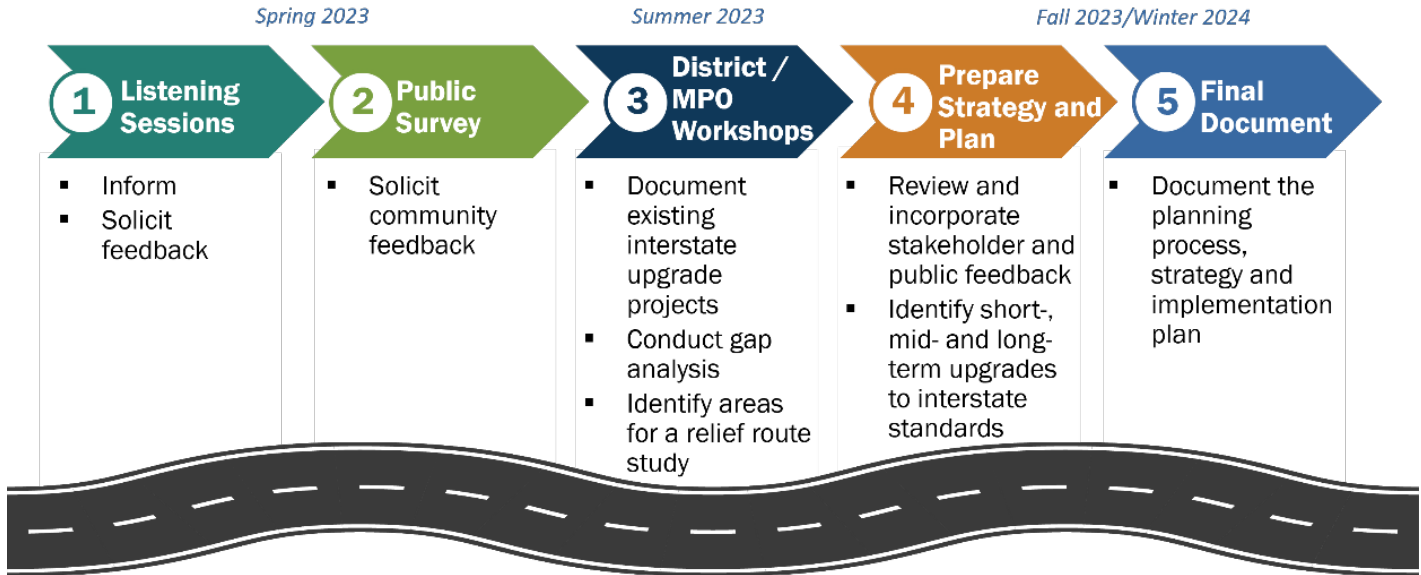
Improve Travel Time and Reduce Travel Time Costs

I-14 System in Texas Implementation Strategy Fact Sheet



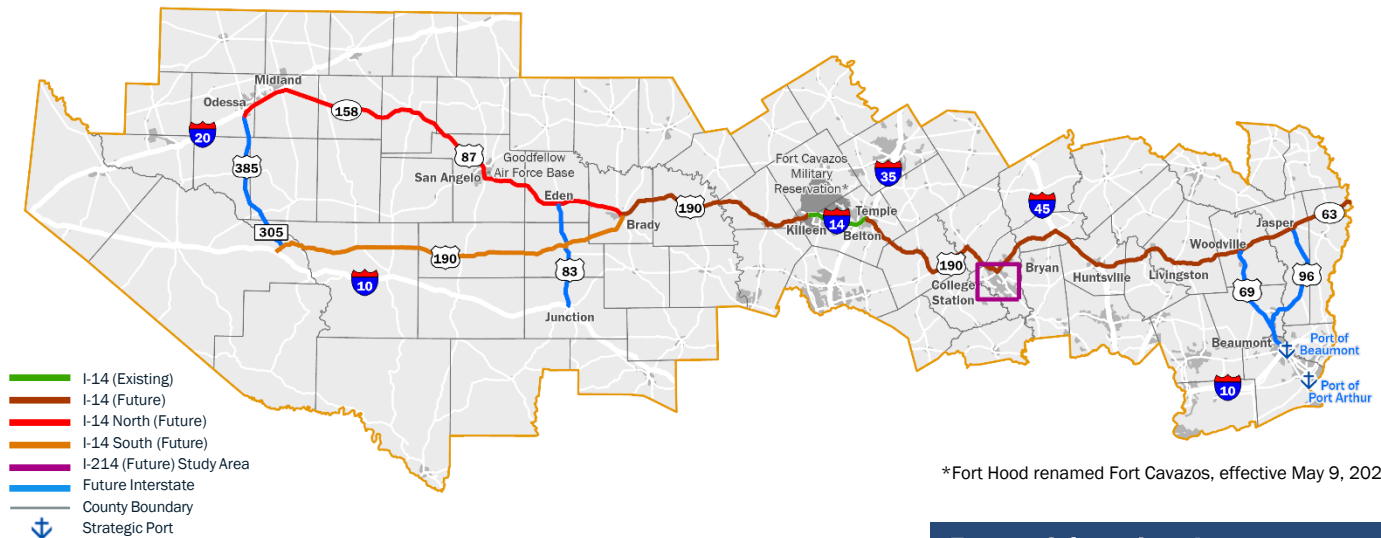
Implementation Strategy

The Texas Department of Transportation (TxDOT) Corridor Planning Branch is leading a statewide planning effort to develop an implementation strategy for upgrading this network of highways in Texas to interstate standards. This strategy will be developed in coordination with TxDOT Districts, Metropolitan Planning Organizations, and other stakeholders. It will include stakeholder engagement and public involvement. The planning process will be documented in an implementation strategy report that will serve as a guide to TxDOT for future project-specific planning and development. The report is anticipated to be complete in the Winter of 2024.



Highways to be Upgraded to Interstate Standards

The specific highway numbering of the I-14 system originates from federal legislation.



Interstate Development

The building of a new interstate highway is measured in decades and done in incremental upgrades. At this time, there is not a dedicated funding source for I-14 system construction. The implementation strategy will provide a guide to TxDOT to logically plan, design, fund and construct new or upgrade existing highways to interstate standards and tie into the existing interstate highway system to obtain formal interstate designation from the Federal Highway Administration. The strategy will also identify those areas that need further study for a route on new alignment (relief route) to avoid heavily developed areas, steep topography or sensitive natural resources.

For more information, please contact:

Steve Linhart, AICP
 Project Development Manager
steve.linhart@TxDOT.gov

www.TxDOT.gov

Keyword Search: **Interstate 14**