



Texas Department of Transportation

I-35 TEXAS CORRIDOR STUDY FACT SHEET

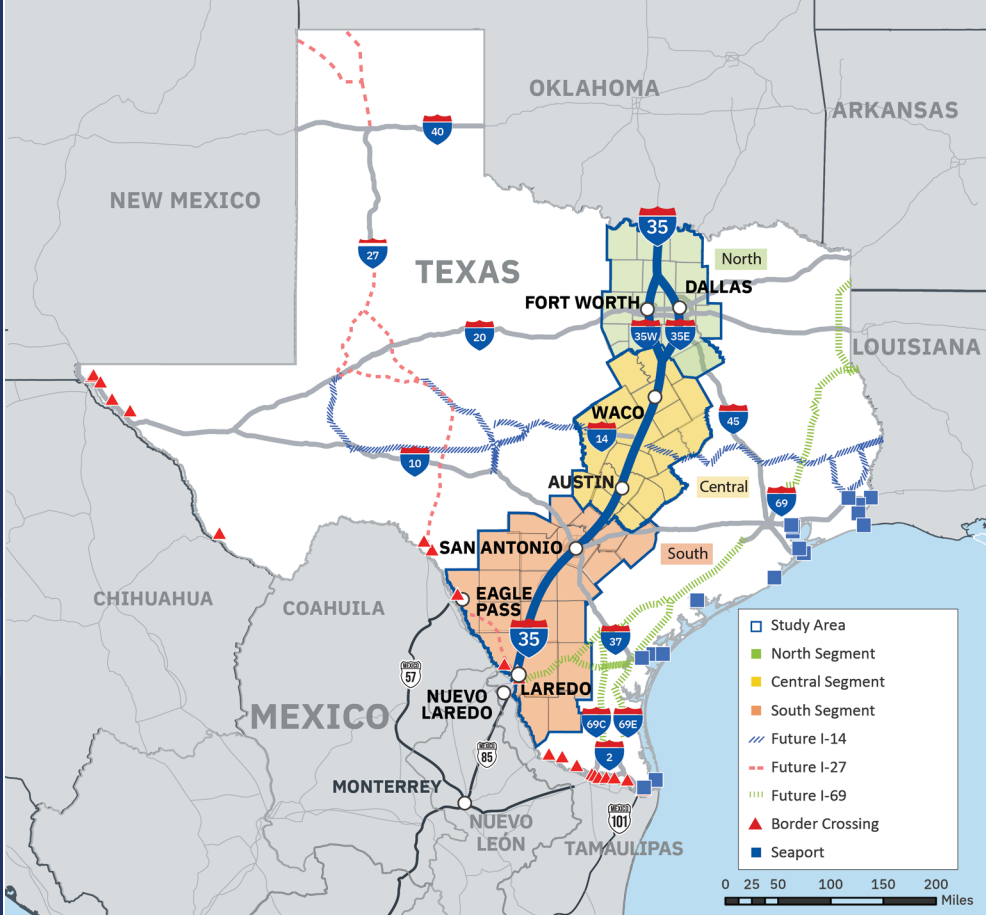
from Laredo to the Texas/Oklahoma State Line

A PATH TO 2050

STUDY OVERVIEW

The Texas Department of Transportation is conducting a study of the I-35 corridor from Laredo to the Texas/Oklahoma State Line.

Known as the Main Street of Texas, the I-35 Texas Corridor connects communities and businesses while supporting the state's growing population and economy. This study aims to address current and future mobility challenges, incorporate opportunities for all users and transportation modes, and benefit urban, rural and border areas while advancing economic development and regional growth.



QUICK FACTS

590 Centerline Miles	243 Miles (41%) less than 6 lanes	7 TxDOT Districts	22 Counties (54 in the study area)	63 Cities
11 MPOs/ COGs	4 RPOs	6 Cargo Airports	4 Military Bases	2 Ports of Entry
		8 Border Crossings		

Source: TxDOT Open Data Portal, 2025

STUDY PURPOSE

Building upon current investments, the I-35 Texas Corridor Study will identify existing gaps and evolving multimodal transportation needs and opportunities. Through data-informed analysis and collaborative stakeholder engagement, the study will develop prioritized solutions including multimodal improvements, policies, programs or regional planning studies that address challenges, intermodal coordination and emerging technologies across urban, rural and border areas for the next 25 years.

2023 Population
in the Study Area

14.9M
(49% of Texans)

Source: 2023 Population Estimates,
Texas Demographic Center.

2023 Gross State
Product (GSP) within
the Study Area

1.3T
(50% of total Texas
GSP)

Source: 2023 State Annual Gross Do-
mestic Product, US Bureau of Economic
Analysis.

2023-2050
Projected
Freight Growth

41% increase
From 487M to
687M in Tonnage

Source: 2023 TRANSEARCH.





I-35 TEXAS CORRIDOR STUDY

from Laredo to the Texas/Oklahoma State Line | Fact Sheet

IMPORTANCE OF I-35

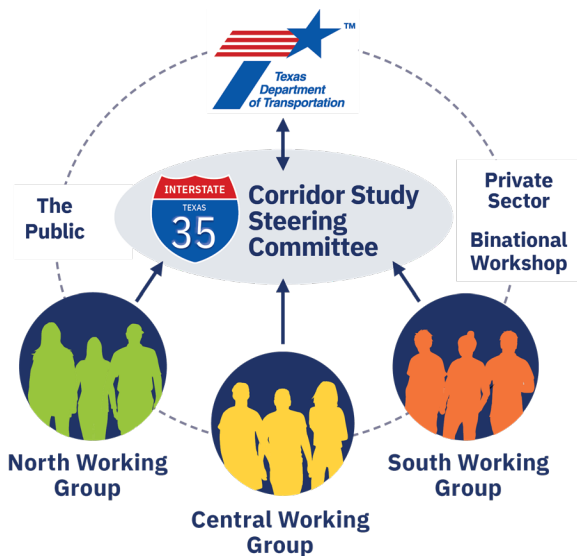
- The Main Street of Texas: Supports Texas' growing population, employment, economy and quality of life.
- Major contributor to Texas' economy with nearly half of our population living along the corridor and employing over 50% of Texans.
- **Connectivity, infrastructure and development** makes it a significant corridor within Texas, the nation and internationally.
- Provides border-to-border, port and critical highway connectivity, making it a vital freight corridor.
- Serves **tourism destinations, military bases and numerous state parks**

KEY CONSIDERATIONS

STAKEHOLDER ENGAGEMENT AND PUBLIC INVOLVEMENT

This study will be guided through a corridor-wide Steering Committee with input from three Segment Working Groups, TxDOT Districts and Divisions, the public, and private sectors. Key stakeholders include:

- County Judges and City Mayors, or their representatives
- Metropolitan Planning Organizations (MPOs), Councils of Governments (COGs) and Rural Planning Organizations (RPOs)
- Chambers of Commerce and Economic Development Organizations
- Regional interest groups
- Statewide trade associations representing industry
- Class 1 railroads, intermodal freight facilities and cargo airports
- Military installations
- Representatives from Oklahoma and Mexico



KEY TASK SCHEDULE	2025		2026			
	Summer	Fall	Winter	Spring	Summer	Fall
Conduct Introductory Meetings and Assess Existing Conditions and Needs						
Identify Proposed Multimodal Improvements and Prioritization Considerations						
Evaluate and Prioritize Multimodal Improvements						
Develop Corridor Improvement Strategy and Implementation Plan						

TXDOT Coordination
 Steering Committee
 Segment Working Groups
 Industry Groups
 Public Survey
 Binational Workshop

Schedule is subject to change.

For more information, contact:

Curtis Jones
 Project Development Manager
 Transportation Planning & Programming Division
 (737) 610-9526 | Curtis.Jones@txdot.gov

www.txdot.gov
 Keyword Search:
I-35 Texas Corridor Study

