



Connecting Texas 2050 | Statewide Long-Range Transportation Plan Fact Sheet - Spring 2023

What is *Connecting Texas 2050*?

Connecting Texas 2050 – the statewide long-range transportation plan – is the cornerstone of the planning process at TxDOT. Updated every four years, this plan will consider current and future transportation choices, and how they integrate as a system to serve Texans and our

economy. With public input and technical studies, TxDOT will develop strategic recommendations to address the safety, reliability, and resiliency of the state's transportation system from now through 2050. Plan development kicked off in fall 2022 and will continue through spring 2024.

Components of our transportation system



Why is this plan needed?

Our transportation system is one of the largest in the nation, and that comes with expectations and needs. TxDOT must keep up with the expectations of Texans who have lived here for generations and those who are moving here tomorrow to make Texas their home.

Texas has recently experienced rapid changes in the movement of people and goods as well as supply chain challenges that have tested the resiliency of our transportation system. With population growth projected to nearly double by 2050 and technological innovations re-imagining how we move, Texas needs a plan to guide TxDOT into the future.

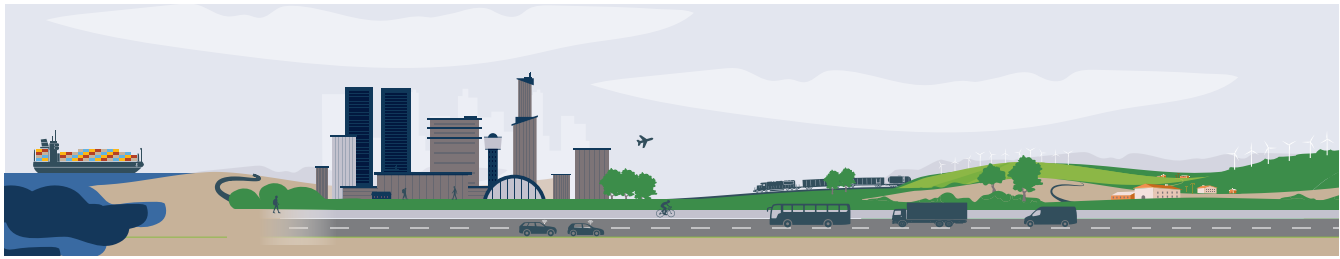
Our future depends on planning for tomorrow's needs today.

Connecting Texas 2050 will help address those needs. This plan will consider all the ways that people and goods move, including roadways, pedestrian and bicycle paths, transit, freight and passenger rail, airports, waterway and ports, and pipelines. It will also examine how advancements in technology can change how we move. **Connecting Texas 2050** will recommend strategies to improve transportation that account for both our rapid growth and changing needs. It will help us connect with the future of transportation in Texas.

Help plan for the future

Whether you bike to work, take the bus to a medical appointment, walk or bike your kids to school, buy groceries in a store, or travel across the state to enjoy skylines, coastal beaches, and wide-open prairies – this plan impacts all Texans.

Communities and the economy rely on the ways they connect across the state. TxDOT needs community input to help shape the future of all the ways we connect across Texas.



Background

Title 6, Section 201.601 of the Texas Transportation Code requires TxDOT to develop a 24-year, statewide long-range transportation plan (SLRTP) that contains transportation goals and measurable targets for each goal. **Connecting Texas 2050** will be the latest update to the SLRTP.

Connecting Texas 2050 includes agency goals and objectives and a detailed, performance-based planning framework that allows TxDOT to more effectively allocate resources toward achieving the state's goals and objectives.

In addition to complying with federal and state requirements, **Connecting Texas 2050** features six goals with supporting objectives and measures of performance that will steer policy direction and propel momentum toward desired outcomes while helping link TxDOT's strategic decisions with on-the-ground actions.

What is the process to develop this plan?

1

Research and data collection



on a wide range of transportation areas.

2

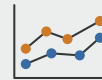
Strategic thinking



to define plan goals and objectives.

3

Forecasting and analysis



to estimate available revenues and assess system performance.

6

Identification of strategies



that TxDOT is implementing now or will endeavor to in the future to ensure it achieves plan goals and objectives.

5

Ongoing collaboration



to hear from TxDOT stakeholders and the public throughout the state.

4

Scenario planning

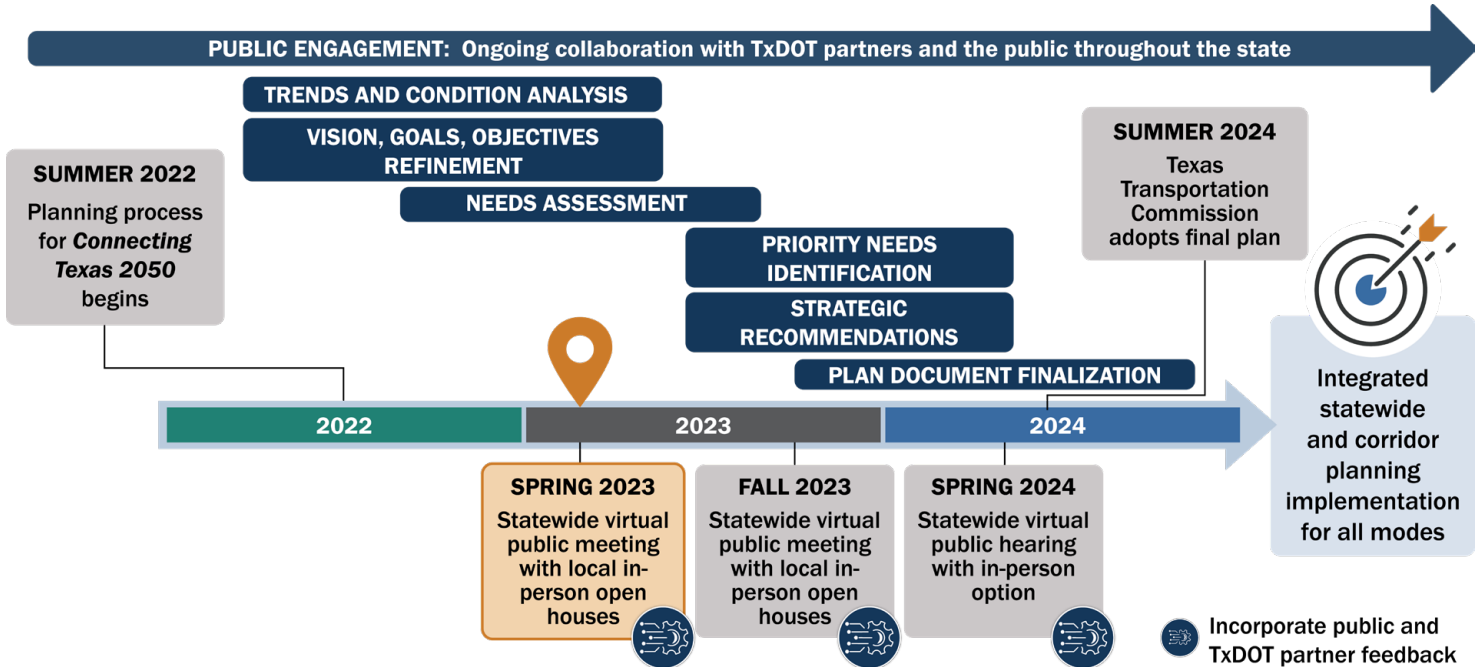


that considers the future implications of different emerging technology and economic conditions.

How does TxDOT use **Connecting Texas 2050**?

Connecting Texas 2050 guides the development of TxDOT's shorter-range statewide plans, various modal and corridor plans, the Unified Transportation Program, and the Statewide Transportation Improvement Program. The SLRTP ultimately establishes strategies and policies that help guide future transportation investment, and deliver the right projects.

Timeline



What is the focus of the Spring 2023 public meetings?

Everyone living, traveling, and working in Texas has an opportunity to contribute to the development of **Connecting Texas 2050**. Learn how to get involved and stay connected throughout the plan development process.

WHY THIS PLAN MATTERS

This plan will guide future transportation planning and investment strategies across Texas, so it is crucial that TxDOT collaborates with partners and the public to deliver this plan.

THE TEXAS TRANSPORTATION SYSTEM

The state's transportation system is an integration of multiple transportation modes. TxDOT's efforts must be guided by a plan that considers all modes through 2050.

ENVISION THE FUTURE

Public and partner input on key factors effecting the future of transportation in Texas will be considered.

GOALS AND OBJECTIVES

TxDOT has established strategic goals and objectives. Public input will help focus the plan on objectives that matter most.



Four ways to submit your comments



Email

Submit a comment by e-mail to:
ConnectingTexas2050@txdot.gov



In-person

Submit a comment form and/or survey in-person at the open house.



To be included in the public involvement summary, comments must be received or postmarked by Wednesday, May 31, 2023.



Online

Submit a comment and/or survey online.

Access links to the online comment form or survey by visiting www.ConnectingTexas2050.com.



Mail

Submit a comment by mail to:
TXDOT TPP
Connecting Texas 2050
Statewide Planning Branch Manager
P.O. Box 149217
Austin, TX 78714-9217

SCAN ME



www.ConnectingTexas2050.com

Next steps

01 Document, evaluate, and address public input.

02 Collect and analyze additional data.

03 Begin identifying priority needs and developing strategic recommendations.

04 Encourage and request additional public input in the future.

Connect with
TxDOT online

- Learn more
- Sign up for updates
- Send input

SCAN ME



www.ConnectingTexas2050.com

