



The Texas Department of Transportation welcomes you to this virtual public meeting with in-person open houses held across the state.

This presentation will provide information on *Connecting Texas 2050*, the latest update to the statewide long-range transportation plan.

This is a pre-recorded presentation made available online on March 21, 2023 for the plan's first virtual public meeting.

Virtual public meeting with in-person open houses

**Note:** This map of Texas is broken out into multiple areas. These areas are the 25 TxDOT Districts who oversee the construction and maintenance of state highways. Districts cover multiple counties.

**LEGEND**

- Series 1 in-person open houses
- Series 2 in-person open houses

Connecting Texas 2050 - Statewide Long-Range Transportation Plan
2

This virtual public meeting is being held in conjunction with 12 in-person open houses held across the state between March 21, 2023, and May 4, 2023.

The in-person open houses are noted by the location icon. To find the open house closest to you, visit [www.ConnectingTexas2050.com](http://www.ConnectingTexas2050.com).

The same information will be available at both the virtual public meeting and in-person open houses.

This is the first of two virtual public meetings with in-person open houses. TxDOT will hold the second virtual public meeting in the fall of 2023. The twelve areas pictured on this slide without an in-person meeting this spring will have an in-person open house this fall.

<b>Meeting purpose</b>	<b>Learn about the planning process.</b>
	<b>Share your vision for the future of transportation in 2050.</b>
	<b>Provide input and comments.</b>
 Connecting Texas 2050 – Statewide Long-Range Transportation Plan	3

During this public meeting, TxDOT invites you to learn about the statewide transportation planning process and share your vision for the future of transportation through 2050.

Your input is a crucial part of this process, and TxDOT welcomes you to provide comments and to stay connected with the development of the plan.


Your continued participation throughout the planning process is important. Please talk to your neighbors and refer them to TxDOT so they can also make comments and be included in this process.

This presentation will provide an overview of why this plan is necessary, how the plan will be developed, and how you can provide input to the planning process. Toward the end of the presentation, there are instructions on how to submit comments and stay connected with TxDOT's statewide planning team. Whether you are participating virtually or in-person, please take the time to review the material presented throughout the virtual public meeting room or in-person open house and provide your input.

## About *Connecting Texas 2050*

**Connecting Texas 2050 is TxDOT's latest update to the statewide long-range transportation plan.**

**Planning horizon:** 2050  
**Updated:** Every four years  
**Considers:** All modes of transportation



**With your help, TxDOT will establish the vision, objectives, performance measures, and strategic recommendations for the state's transportation system through 2050 for all modes.**



*Connecting Texas 2050* is TxDOT's planning effort to update the statewide long-range transportation plan. This plan will consider current and future transportation choices, and how they integrate as a system to serve Texans and our economy.

The state's transportation system is an integration of various transportation modes such as roadways maintained by the state, transit, airports, ports, bicycle and pedestrian paths, rail, and our border crossings. With public input and technical studies, TxDOT will establish the vision, objectives, performance measures, and strategic recommendations to address the safety, reliability, and the resiliency of the state's transportation system from now through 2050.

TxDOT's Transportation Planning and Programming Division leads the update to the plan every four years per federal and state requirements.

*Connecting Texas 2050* is the cornerstone of the planning process at TxDOT.

## Why does *Connecting Texas 2050* matter to you?

Today, tomorrow, and in 2050, Texans may:

- ✓ Commute to work
- ✓ Take the bus to an appointment
- ✓ Walk and bike to school
- ✓ Buy groceries at the store
- ✓ Travel across the state
- ✓ Move goods



The ways Texans and goods **connect** across our transportation system is an integral part of daily life.

Communities and the economy rely on the ways they **connect** across the state.

TxDOT needs **YOUR** input to help shape the future of all the ways we **connect** across Texas.

The plan will guide transportation planning and investment strategies across Texas.



TxDOT is often asked “why does this plan matter?” If you travel on TxDOT’s roadways, use transit, get on a plane, purchase products at a store or ship goods, this plan matters to you.

TxDOT understands that communities and the economy rely on the many ways that they can connect across the state. That’s why TxDOT needs YOUR input to help understand how those connections matter to you and how you anticipate those connections may change in the future. Your input can shape the future of all the ways we connect across Texas.

This is a very important process that TxDOT is undertaking, and your ongoing participation and input is critical to developing and delivering a plan that will guide transportation planning and investment strategies across Texas.

**By 2050,**  
Texas will see a significant increase in population and freight movement.

**With increasing population...**  
Population and job growth by 2050

Year	Texas Population	Jobs in Texas
2010	25M	11M
TODAY (2025)	29M	12M
2050	41M	20M

**...freight growth and movement increases!**  
Freight tonnage increase by 2050

Truck <b>2.0B+</b>								
Pipeline <b>1.2B+</b>								
Rail <b>600M+</b>								
Water <b>500M+</b>								
Air <b>2.9M+</b>								

each icon = approximately 250 million tons

By 2050  
**40%**  
population growth

---

**100%**  
freight growth

Connecting Texas 2050 - Statewide Long-Range Transportation Plan

6

Texas is growing! By 2050, Texas will see a significant increase in both population and freight movement. There will be a 40 percent increase in population growth, and freight will double by 2050 – particularly with 18-wheeler trucks on our roads. TxDOT must proactively address what could happen as a result of this growth.

## What might 2050 look like?



### **12 million more people**

by 2050 means more vehicles on our roads, and potentially longer travel times.



### **Demand for home delivery of goods**

could mean more trucks on our roads.



### **Remote work arrangements**

could impact future commuting patterns.



### **Aging populations and younger generations**

may want other alternatives to driving.



The future is uncertain so our plan must consider many factors that could affect transportation in the decades to come.

Some of the key factors being considered during this planning process include the following:

With 12 million more people coming to live and work in Texas by 2050, Texans will see more vehicles on our roads and potentially longer travel times as a result. Additionally, the demand for home delivery of goods could mean more trucks on our roadways. Also, remote work arrangements could impact future commuting patterns. Finally, aging populations and younger generations may want alternatives to driving.

## What might 2050 look like?



### **Emerging technologies**

could improve safety, sustainability, and reliability.



### **Rural communities and growing suburban areas**

may need enhanced mobility options to improve access to jobs, goods, and services.



### **Disruptions and diversified supply chains**

could require the need for more efficient and reliable movement of all modes of freight.



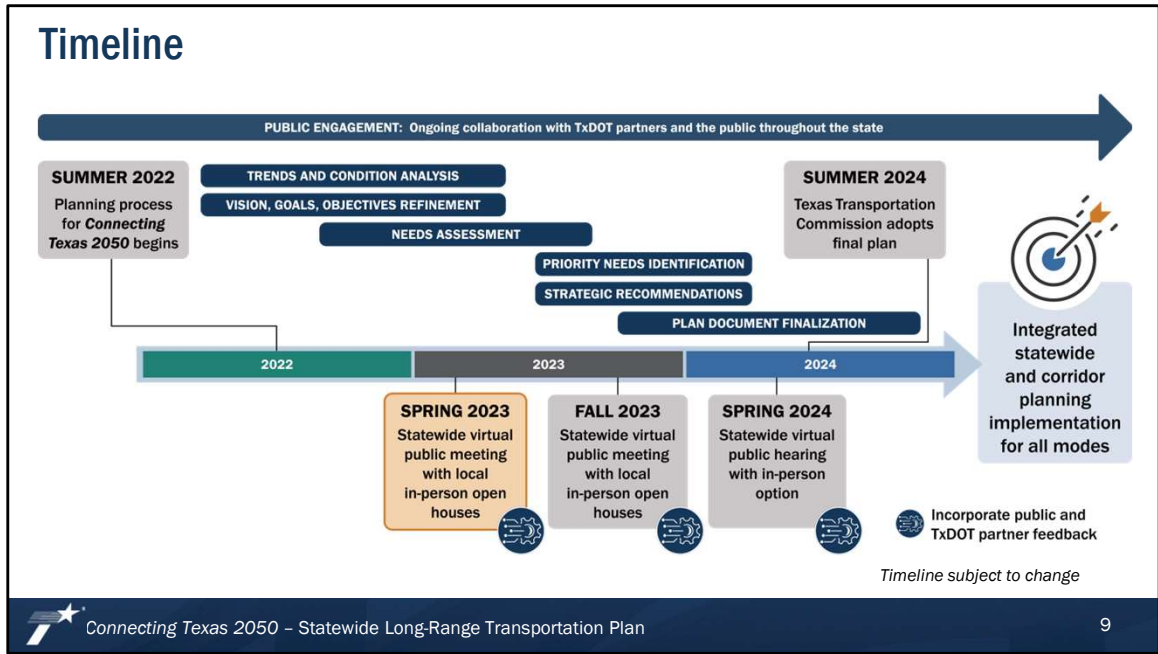
### **Continued economic growth and shifts**

could place greater demands on the future transportation system



Additional key factors include emerging technologies that may become available could improve safety, sustainability, and reliability. In addition, rural communities and growing suburban areas may result in the need for enhanced mobility options to improve access to jobs, goods, and services. Also, disruptions and diversified supply chains could require the need for more efficient and reliable movement of all modes of freight, such as by water, air, on the road, and by rail. And finally, continued economic growth and shifts could place greater demands on the future transportation system.





With the potential impact from those considerations, it’s crucial that we be thorough and timely in delivering this plan.

This is a snapshot of the timeline to develop *Connecting Texas 2050*. In the summer of 2022, TxDOT launched the process to update the statewide long-range transportation plan and named this iteration of the plan *Connecting Texas 2050*. After the launch, TxDOT began the effort to analyze trends and existing conditions and evaluate how future scenarios can impact the transportation system. In late 2022, TxDOT began work on identifying objectives that reinforce TxDOT’s strategic goals and began identifying potential future needs. Currently, the department is conducting the first series of agency, stakeholder, and public meetings that will gain input on potential future scenarios, goals and objectives, and future needs.

Following this first series of meetings, TxDOT will begin work on assessing potential future needs and strategic recommendations. A second series of meetings is anticipated from September through November of 2023 to discuss those elements of the planning process. Following the second series, TxDOT will document, evaluate, and address public input; collect and analyze any additional data; and begin selecting and defining priority needs and strategic recommendations.

The *Connecting Texas 2050* plan will be presented at a statewide public hearing in the spring of 2024 and then submitted to the Texas Transportation Commission for adoption following consideration of public feedback and any resulting revisions. The plan will result in integrated statewide and corridor planning implementation for all modes. This ultimately helps TxDOT deliver the right projects.

Throughout this process, TxDOT will have public engagement opportunities including surveys and other events. To stay up to date on TxDOT’s progress, visit us online and sign up for updates by going to [www.ConnectingTexas2050.com](http://www.ConnectingTexas2050.com).

## What is the focus of the spring 2023 public meeting?

1.

### Why this plan matters

This plan will guide future transportation planning and investment strategies across Texas, so it is crucial that TxDOT collaborates to deliver this plan.

2.

### The Texas Transportation system

The state's transportation system is an integration of various transportation modes. TxDOT's efforts must be guided by plan that considers all modes through 2050.



The virtual public meeting this spring is focusing on four major topics about the plan, and there is key information available on various exhibits for your review and comment. We'll review where to find those exhibits in a moment.

First: Why does this plan matter? Whether you connect across our rural heartlands or in the hearts of our cities or somewhere in between, this plan impacts all Texans. This plan will guide future transportation planning and investment strategies across Texas, so it's crucial that TxDOT collaborates with its partners and the public to deliver this plan.

Second: What is our transportation system? As mentioned earlier, the state's transportation system is an integration of various transportation modes such as roadways maintained by the state, transit, airports, ports, bicycle and pedestrian paths, rail, and the border crossings. TxDOT's efforts must be guided by a plan that considers all modes through 2050. There are exhibits that help explain these needs for your review.

## What is the focus of the spring 2023 public meeting?

3.

### Envision the future

Public and partner input on key factors effecting the future of transportation in Texas will be considered.



*Share your input to help shape TxDOT's vision.*

4.

### Goals and objectives

TxDOT has established strategic goals and objectives. Public input will help focus the plan on objectives that matter most.



*Help ensure TxDOT continues on the right track.*



Third: Envisioning the future is a crucial part of TxDOT's process. TxDOT is considering key factors for the future of transportation in Texas, and your input is crucial. After you review the exhibits – including a list of identified factors under consideration – please share your input to help shape TxDOT's vision.

Fourth: Goals and objectives are a key part of this process, especially to help shape future performance measures. TxDOT has established strategic goals and objectives, which you can view in the exhibits, and TxDOT needs your help to focus the plan on objectives that matter the most. Help ensure TxDOT continues on the right track by sharing your comments.

Connecting with communities is the number one focus. Your input will inform TxDOT's planning process as future TxDOT policies and strategies are developed to address many different transportation needs statewide.

## How to access virtual public meeting materials

### Virtual public meeting materials available on the TxDOT website:

Visit [www.ConnectingTexas2050.com](http://www.ConnectingTexas2050.com)

Scan me

Connecting Texas 2050 - Statewide Long-Range Transportation Plan

Let's make sure you know how to access the virtual public meeting materials.

The plan's website contains all materials presented in the virtual public meeting and in-person open houses, including this presentation in both English and Spanish, exhibits, a survey, and a comment form. You may download and review the materials at your convenience.

Visit the project webpage at [www.ConnectingTexas2050.com](http://www.ConnectingTexas2050.com) or you may access the webpage by scanning this QR code with your electronic device.

If you need technical assistance, please contact the team at (512) 271-2025. These materials will be available at the in-person open houses.

## How to comment

**To be included in the public involvement summary, comments must be received or postmarked by Wednesday, May 31, 2023.**

**Email**

**Submit a comment by e-mail to:**  
ConnectingTexas2050@txdot.gov

**Online**

**Submit a comment and/or survey online**  
Access links to the online comment form or survey by visiting [www.ConnectingTexas2050.com](http://www.ConnectingTexas2050.com)

**Mail**

**Submit a comment by mail to:**  
TxDOT TPP Connecting Texas 2050  
Statewide Planning Branch Manager  
P.O. Box 149217, Austin, TX 78714-9217

**In-Person**

**Submit a comment form and/or survey in person at the open house**

Connecting Texas 2050 – Statewide Long-Range Transportation Plan
13

Your feedback is an important part of TxDOT's planning process.

You can submit a written comment via email to [ConnectingTexas2050@txdot.gov](mailto:ConnectingTexas2050@txdot.gov). You may also submit your comments online and fill out our online survey. Access both the online comment form and the online survey at [www.ConnectingTexas2050.com](http://www.ConnectingTexas2050.com). Additionally, you may submit comments via postal mail to: TxDOT TPP, Connecting Texas 2050, Statewide Planning Branch Manager, P.O. Box 149217, Austin, TX 78714-9217. At the in-person open house, you can submit your comments on the provided forms and you can fill out a physical copy of the survey.

To be included in the public involvement summary, all comments must be postmarked or received by Wednesday, May 31, 2023.

Should you have any questions or comments at any time during the planning process, you may contact the TxDOT Project Manager at (512) 923-0453 or [ConnectingTexas2050@txdot.gov](mailto:ConnectingTexas2050@txdot.gov).

## Next steps


```
graph TD; A[Document, evaluate, and address public input.] --> B[Collect and analyze additional data.]; B --> C[Begin identifying priority needs and developing strategic recommendations.]; C --> D[Encourage and request additional public input in the future.];
```


**Document, evaluate, and address public input.**

**Collect and analyze additional data.**

**Begin identifying priority needs and developing strategic recommendations.**

**Encourage and request additional public input in the future.**

 **Learn more and sign up for updates**  
[www.ConnectingTexas2050.com](http://www.ConnectingTexas2050.com)



Once the spring 2023 public meeting series is completed, TxDOT will document, evaluate, and address public input; collect and analyze any additional data; and begin identifying priority needs and developing strategic recommendations. Please stay involved and provide any additional public input throughout the planning process.

As mentioned earlier, TxDOT will hold the next virtual public meeting with in-person open houses in the fall of 2023. At these events, TxDOT will ask the public to help prioritize needs and refine TxDOT strategies to address these needs.

Please use the QR code on the screen to learn more and sign up for future updates.

# Thank you for your participation!

Please remember to submit your comments by Wednesday, May 31, 2023.



Thank you for participating in this public meeting. Please remember to submit comments by Wednesday, May 31, 2023.

Thank you for your commitment to Texas and your participation in *Connecting Texas 2050*. This concludes the presentation.