

# FACT SHEET

## US 281 – Hamilton Truck / Relief Route

City of Hamilton, Hamilton County, Texas

CSJs: 0251-01-064, 0251-02-050 and 0183-03-054

### What is the purpose of the Hamilton Truck / Relief Route (T/RR)?

This Texas Department of Transportation (TxDOT) project will alleviate US 281, SH 36 and SH22-related traffic congestion in downtown Hamilton; a solution which accounts for:

- Mobility
- Safety, including T/RR accommodation of hazardous truck cargo
- Traffic Operations
- Natural and Human Environments

### How are the environmental aspects being considered?

The project has identified environmental features that could potentially be impacted by the proposed T/RR alignment. Therefore, an environmental constraints map has been prepared to assist designers in avoiding environmental features and/or minimize impacts, features such as businesses and residences, cemeteries, floodplains and streams, historic structures, houses of worship, public facilities, and species-specific vegetation.

### What is the configuration of the T/RR?

Segments of the T/RR alignment are located where no roadway currently exists. Overall, the T/RR is composed of two 12-foot-wide travel lanes in each direction amounting to a variable proposed right-of-way (ROW) width of approximately 440- to 672-feet. The T/RR segment located between SH 36 and SH 22 is composed of one 12-foot-wide lane in each direction located within a proposed ROW width of approximately 200-feet.

### Who is involved in the study?

Primary outreach includes the City, Hamilton County, transportation and civic-related offices, and property owners. To date, TxDOT has conducted three advertised public meetings to explore and produce an optimum, least impact T/RR alignment.

### Will ROW information be available at TxDOT's September 24, 2024 Public Meeting?

TxDOT representatives and consultants will be on hand to answer questions, including ROW topics.

### What helpful information can the public provide TxDOT during this phase of the project?

Comments from landowners, business owners and residents are welcome. Their unique perspective can provide valuable insight on designing the T/RR.

### What is the current phase of the T/RR?

The Schematic Design and environmental analysis phases. A prior T/RR feasibility study phase explored multiple route alignment options and produced a preferred T/RR alignment. The schematic phase explores the best way to install the route details and features such as access ramps, bridges, and livestock passes beneath elevated segments of the road.

### What is the estimated start date for construction of the T/RR?

Begin construction is currently estimated in 2029.

### Drillers have been seen near property sites or near the proposed T/RR alignment?

The drilling sites are potential locations of the Route's roadway bridge overpasses or underpasses which will collect and assess general soil samples to aid the design engineers in determining what pavement and bridge support structures should be utilized for the Route.

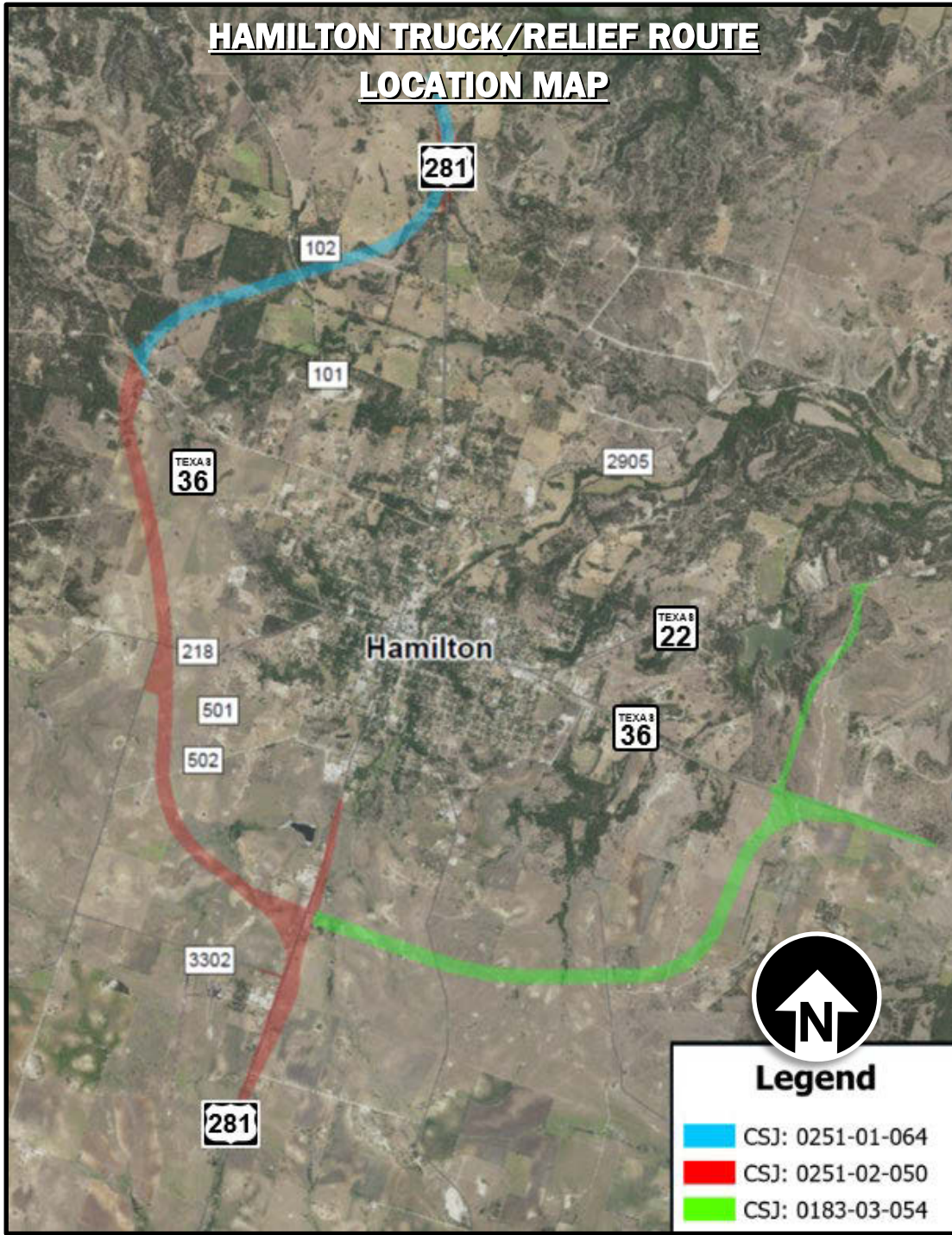
### After the September 24, 2024 Public Meeting, what are the next steps for this project?

TxDOT will refine the schematic design based on comments received. After a public hearing is conducted in 2025 and after the supporting environmental documents have been approved, TxDOT will develop ROW Maps for the land acquisition process, present offers to affected landowners, and produce post-schematic T/RR construction plans.

Please note environmental clearance is required before the ROW purchasing process can begin. TxDOT's goal is to begin the landowner outreach in 1.5 to 2 years.

Please submit your Public Meeting comments by October 9, 2024 to:

[US281.Hamilton@civillassociates.com](mailto:US281.Hamilton@civillassociates.com)



Please scan the QR Code below to access US 281 Truck/Relief Route Information

