

# TxDOT RURAL TIP

2027 – 2030 Wichita Falls  
District

# Welcome!

Welcome to the Wichita Falls District Rural Transportation Improvement Program Virtual Public Meeting for the 2027-2030 program! My name is Ben Coker and I'm a Planner at TxDOT's Wichita Falls Headquarters. We are here today to go over the projects to be included in the upcoming 2027-2030 Rural TIP.

## Agenda

- |  |   |
|--|---|
| <b>01</b>   Safety Minute                                      | <b>05</b>   How Projects are Selected for the Rural TIP |
| <b>02</b>   Wichita Falls District and its boundaries          | <b>06</b>   Projects by County                          |
| <b>03</b>   The Rural Transportation Improvement Program (TIP) | <b>07</b>   Funding                                     |
| <b>04</b>   How the Rural TIP Impacts You                      | <b>08</b>   Next Steps                                  |

Today we will go over the counties in Wichita Falls district and all the roads under the district's care. We will also review the basics of what the Rural TIP and why it's important for you to be here with us today. We will explain how the projects included in the program are selected, funded and classified in order to make the most of the program.

Once you understand all of this, you will have the opportunity to review and comment on all the projects that the Wichita Falls District has included in the 2027-2030 program. Both the big projects and the small supporting projects.

**HELP MAKE TEXAS SAFER FOR EVERYONE**

**DRIVE *like a* TEXAN**

Kind. Courteous. Safe.

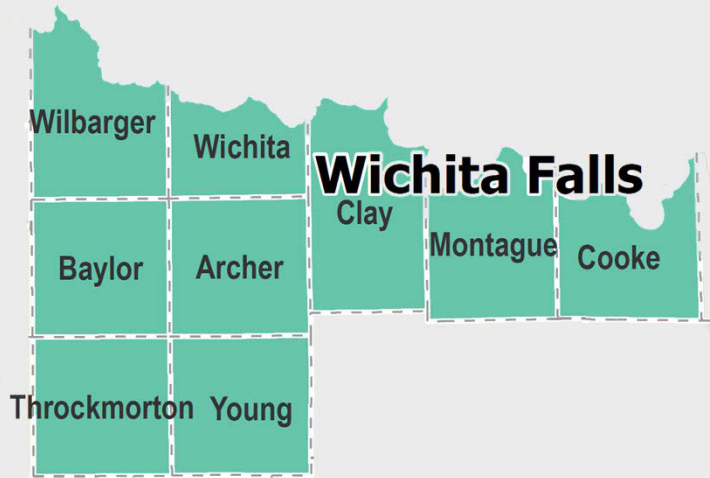
[DriveLikeATexan.com](http://DriveLikeATexan.com)



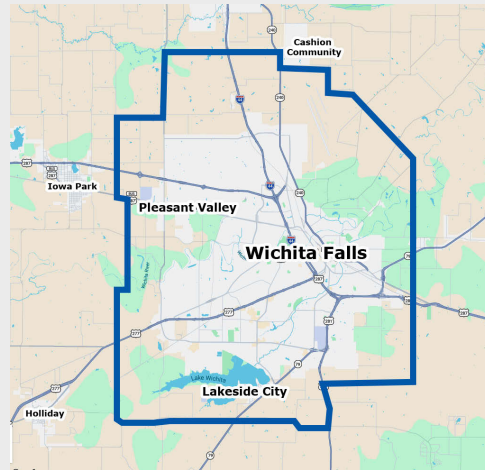
*Drive like a Texan* is all about saving lives. It's a reminder for everyone in Texas to treat each other with a little bit of the kindness, respect, and the neighborly spirit we're famous for, especially on the road. By showing courtesy and care behind the wheel the same way we would in person, we can make our roads safer for everyone.

Afterall, the most important part of any journey is arriving safely. Not only do you protect yourself, but you also provide safety to every driver, passenger, biker, and pedestrian sharing the road.

## District Boundaries



**Wichita Falls District**



**Wichita Falls MPO**

2027-2030 Rural TIP

The Wichita Falls District includes all of the counties shown in the map. Projects included in the 2027-2030 Rural TIP are located in *Archer, Baylor, Clay, Cooke, Montague, Throckmorton, Wichita, Wilbarger and Young Counties.*

## Rural Transportation Improvement Program (TIP)

### THE RURAL TIP

includes both grouped projects and individually listed projects that include added-capacity projects and regionally significant projects to be funded outside of MPO boundary, and within a TxDOT district during the next four years, including those eligible for federal funding.

It can include projects for :



**A Rural TIP project is anticipated to be funded within the next four years.**

**It shows regional agreement (community-region-state) on the need of a project.**

2027–2030 Rural TIP

5

The Rural Transportation Improvement Program is a list of local projects to be funded in a TxDOT District over the next 4 years. This means that all projects included in the list are expected to be underway within 4 years following its approval.

It is multimodal; which means that it can include projects relating to highways, bicycle and pedestrian facilities, transit services, and freight projects as well as the preliminary studies used to define those projects.

Rural TIP is meant to show regional agreement on the need and priority of a transportation project... While remaining consistent with the projects and objectives included in regional Long Range Transportation Plans.

This way, all parties involved can be sure they are making the best investment for the community...

The Rural TIP is a part of the Statewide Transportation Improvement Program or (STIP). By Federal law, no project can receive federal funding unless it is listed in the Rural TIP!

## How the Rural TIP Impacts You

The Rural TIP process includes opportunities to provide input on the priority of major projects that are listed on it.

Local and small projects around your community dealing with safety and access also get funding through the Rural TIP, for example:

- Road expansions
- Sidewalks
- Bike lanes
- Pavement repair or maintenance
- New or improved signals
- Turning lanes

**By participating today, you are providing input on nearly 50 RTIP projects!**

**2027–2030 Rural TIP**

**You know  
your  
community  
best!**

Tell us what  
project  
should come  
first and why

6

It is important for you to participate because funding secured by this process is intended to address your communities' most immediate needs.

By providing comments on the priority of the projects included, you are helping us identify regional priorities.

By reviewing the entire program in a single meeting you are: 1) having a regional impact, 2) helping us be more effective with your money, and 3) ensuring that we are investing where we should.

## How Projects are Selected for the Rural TIP

Projects are identified and selected by evaluating existing and future needs based on:

current conditions and projections, statewide and regional plans, public input regarding transportation priorities

^ This would be you, right now!



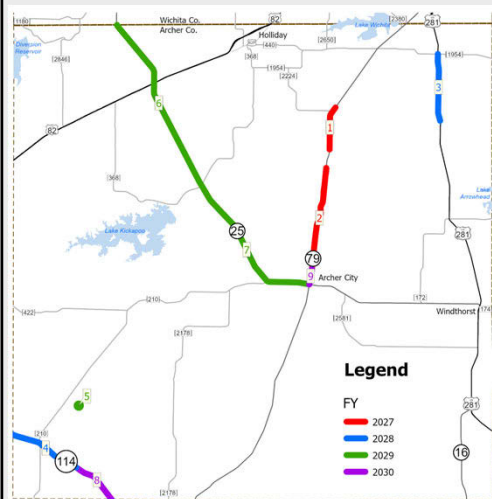
2027-2030 Rural TIP

Rural Transportation Organizations, Metropolitan Planning Organizations and local governments are responsible for selecting projects within their boundaries

TxDOT, through the District office and area offices, is responsible for selecting all projects relating to the state transportation system and other national roadways.

This includes Interstates, State and US Highways as well as Farm-to-Market and Ranch-to-Market roads. The projects you will review today should respond to local needs!

It is our responsibility to provide you with the opportunity to provide input on which projects should be advanced.



Fiscal years (FY) for projects shown indicate tentative projected dates for beginning construction. These dates are highly dependent upon available statewide construction funding and concurrence by the Texas Transportation Commission.

**2027-2030 Rural TIP**

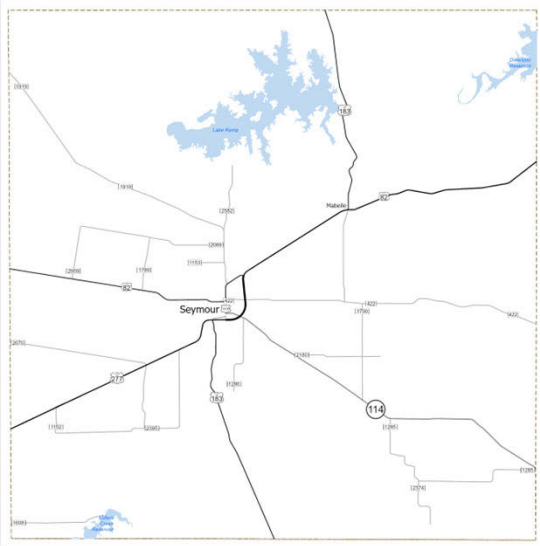
**Rural TIP Archer County Projects**

ID	CSJ	Highway	Limits from	Limits to	Project Description	Project Cost	TIP Year
1	0283-03-023	SH 79	Near FM 2224	Archer City	Upgrade to Super-2	\$9.25 Mil	2027
2	0283-02-040	SH 79	FM 2224	1.7mi South	Upgrade to Super-2	\$3.64 Mil	2027
3	0249-02-026	US 281	FM 1954	Lake Creek	Pavement Repair & Overlay	\$5.29 Mil	2028
	0249-03-056	US 281	Lake Creek	Lake Creek Road	Pavement Repair & Overlay	\$309,400	2028
4	0133-07-031	SH 114	Baylor County Line	Young County Line	Pavement Repair & Rubber Seal	\$1.2 Mil	2028
5	0903-29-031	CR 158	At Draw		Replace Bridge	\$510,000	2029
6	0137-04-019	SH 25	Wichita County Line	US 82	Widen Existing Roadway	\$3.0 Mil	2029
	0137-05-038	SH 25	US 82	FM 368	Widen Existing Roadway	\$5.0 Mil	2029
7	0137-05-039	SH 25	FM 368	SH 79	Overlay	\$6.76 Mil	2029
8	0133-07-030	SH 114	Baylor County Line	Young County Line	Upgrade to Super-2	\$11.2 Mil	2030
9	0283-03-026	SH 79	Archer City North City Limits	SH 25	Mill Curb and Gutter & Overlay	\$1.0 Mil	2030

This map shows all Projects included in the 2027-2030 Rural TIP for Archer County. Beginning with a pair of Upgrade to Super-2 projects in TIP Year 2027 on State Highway 79 from FM 2224 to Archer City.

in TIP Year 2028, Pavement Repair and Overlay projects on US 281 from FM 1954 to Lake Creek Road and a Pavement Repair job on State Highway 114 from the Baylor County Line to the Young County Line.

TIP Year 2029 includes a bridge replacement on Country Road 158 at a draw and a series of widening and overlay projects on SH 25 from the Wichita County Line to SH 79 in Archer City. And in TIP Year 2030, an 11.2 million dollar Super-2 project on State Highway 114 from the Baylor County line to the Young county line, and a 1-million dollar Mill and overlay on State Highway 79 in Archer City.



2027-2030 Rural TIP

## Rural TIP Baylor County Projects

No Projects in the 2027-2030 Rural TIP

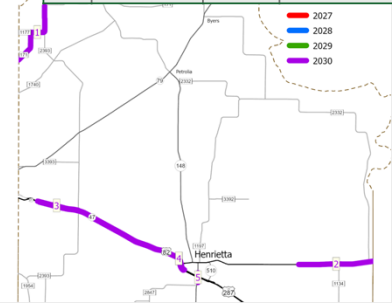
While work will be performed in Baylor County in the next 4 years, there are no projects included at this time in the 2027-2030 Rural TIP.

### Rural TIP Clay County Projects



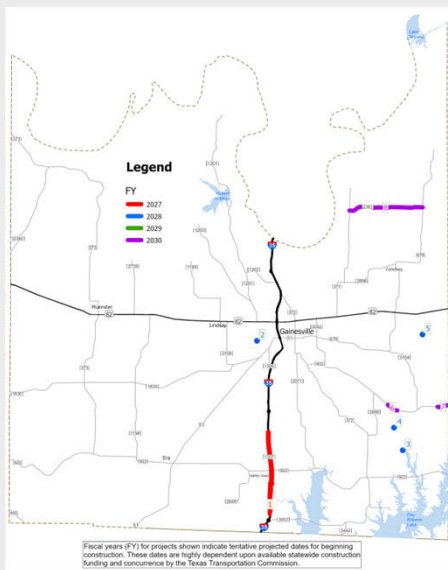
2027-2030 Rural TIP

Map ID	CSJ	Highway	Limits from	Limits to	Project Description	Project Cost	TIP Year
1	0681-02-016	FM 171	Wichita County Line	Near Adams Road	Rehab & Widen Roadway	\$7.28 Mil	2030
2	0044-03-039	US 82	Near Bryant Edwards Road	Montague County Line	Upgrade to 4-Lane Divided Highway	\$32.9 Mil	2030
3	0044-02-101	US 82	Butler Road	US 287	Pavement Repair & Overlay	\$2.89 Mil	2030
4	0224-01-063	US 287	US 82	Railroad Overpass	Pavement Repair & Overlay	\$107,000	2030
5	0391-04-033	SH 148	Dry Fork Little Wichita	Henrietta South City Limits	Rehab with Concrete Pavement	\$6.0 Mil	2030



Over to Clay County. All projects in this Rural TIP are in 2030, highlighted by a 7.28 million dollar Rehab and widening on FM 171 from the Wichita County Line to Near Adams Road. Another section of Upgrading to a 4-lane Divided Highway on US 82 from Near Bryant Edwards Road to the Montague County Line with an estimate of 32.9 million dollars, and a 6-million dollar Concrete Pavement rehabilitation on State Highway 148 from the Dry Fork of the Little Wichita River to the Southern City limits of Henrietta City.

### Rural TIP Cooke County Projects

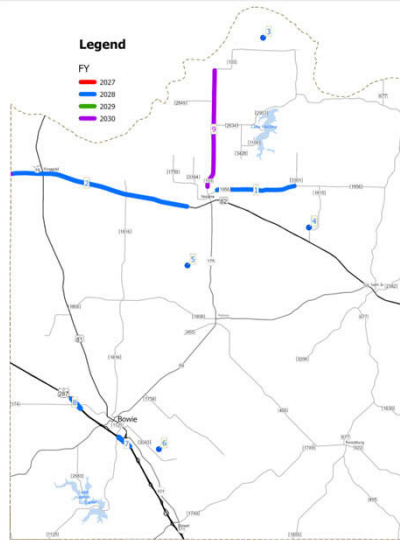


2027-2030 Rural TIP

Map ID	CSJ	Highway	Limits from	Limits to	Project Description	Project Cost	TIP Year
1	0195-01-111	IH 35	0.7mi North of FM 3002	1.4mi South of Spring Creek Road	Widen to 6-Lane Freeway	\$361 Mil	2027
2	0903-15-110	CR 165	At Draw		Replace Bridge	\$696,000	2028
3	0903-15-111	CR 365	At Indian Creek		Replace Bridge	\$723,000	2028
4	0903-15-112	CR 427	At Indian Creek		Replace Bridge	\$736,000	2028
5	0903-15-114	CR 420	Signed CR 150 at Draw		Replace Bridge	\$604,500	2028
6	2459-01-028	FM 902	At Indian Creek		Replace Bridge	\$2.5 Mil	2030
7	2459-01-029	FM 902	At Timber Creek		Replace Bridge	\$2.5 Mil	2030
8	2322-01-011	FM 2383	FM 371	FM 678	Widen Existing Roadway	\$6.0 Mil	2030

Heading east into Cooke County, projects for the 2027-2030 RTIP include the continued widening of Interstate 35 in TIP year 2027 to a 6-lane freeway from 0.7 miles North of FM 3002 to 1.4 miles south of Spring Creek Road, with an estimate of 361 million dollars.

There are 4 off-system county road bridge replacements scheduled in TIP Year 2028: Two bridge replacements on FM 902 in TIP Year 2030, as well as a 6million dollar roadway widening of FM 2383 from FM 371 to FM 678.



### Rural TIP Montague County Projects

Map ID	CSJ	Highway	Limits from	Limits to	Project Description	Project Cost	TIP Year
1	1611-02-013	FM 1956	Nocona City Limits	FM 3301	Widen & Add Shoulders	\$7.0 Mil	2028
2	0044-04-066	US 82	Clay County Line	Near McCool Road	Install Cable Barrier	\$2.5 Mil	2028
3	0903-28-073	CR 194	At North Fork Village Creek		Replace Bridge	\$682,000	2028
4	0903-28-074	CR 265	At Branch Farmers Creek		Replace Bridge	\$695,000	2028
5	0903-28-075	CR 272	At Barrel Springs Creek		Replace Bridge	\$695,000	2028
6	0903-28-076	CR 363	At Brushy Creek		Replace Bridge	\$775,000	2028
7	0013-05-068	US 287	0.4mi North of US 81/287	0.4mi South of US 81/287	US 81 Ramp Illumination	\$387,681	2028
8	0224-03-066	US 287	0.5mi North of FM 174	0.5mi South of FM 174	Install Safety Lighting	\$510,219	2028
9	0239-04-023	FM 103	Nocona City Limits	Hancock Road	Widen Pavement	\$11.4 Mil	2030

2027-2030 Rural TIP

12

Montague County features 8 projects in TIP year 2028, beginning with a 7-million dollar project on FM 1956 to widen and add shoulders from the Nocona city limits to FM 3301.

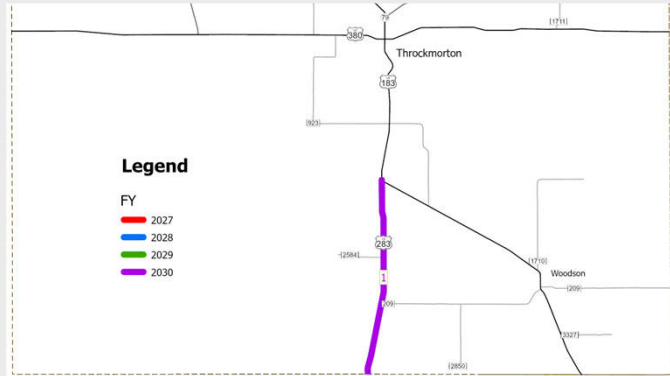
Next a 2.5 million dollar cable barrier installation on US 82 from the Clay County Line to near McCool Road, as well as 4 off-system county road bridge replacements. And 2 projects on US 287 to install safety lighting.

In TIP Year 2030, a nearly 11.5 million dollar pavement widening on FM 103 from the Nocona city limits to Hancock Road.

### Rural TIP Throckmorton County Projects



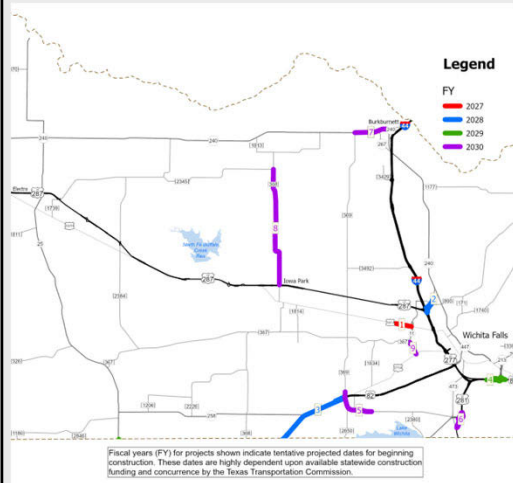
Map ID	CSJ	Highway	Limits from	Limits to	Project Description	Project Cost	TIP Year
1	0125-03-056	US 283	US 183/283 Split	Shackleford County Line	Widen Existing Roadway	\$7.8 Mil	2030



2027-2030 Rural TIP

One project in Throckmorton County, a widening of US 283 in TIP Year 2030 from the US 183/283 split down to the Shackleford county line, estimated at just under 8-million dollars.

### Rural TIP Wichita County Projects



Map ID	CSJ	Highway	Limits from	Limits to	Project Description	Project Cost	TIP Year
1	0043-17-036	BU 287J	City View Drive	SL 11 West Frontage Road	ADA Remediation	\$1.5 Mil	2027
2	0156-07-115	SS 325	US 287	Railroad Overpass	SS 325 CTB	\$528,592	2028
3	0156-04-114	US 82	Archer County Line	0.7mi W of FM 369	Widen Pavement (GAP Project)	\$21.2 Mil	2028
4	0044-01-116	US 82	0.03mi West of SH 79 Overpass	0.18mi East of SH 79 Overpass	Shoulder Widening, Install Metal Beam Guard Fence	\$522,245	2029
5	0802-02-079	FM 369	Callfield Canal	Barnett Road	Mill & Overlay	\$2.37 Mil	2030
6	0249-01-050	US 281	SH 79	Rathgeber Road	Construct Direct Connect	\$16.8 Mil	2030
7	0156-09-016	SH 240	Ave D	SL 267	Repair & Overlay	\$1.4 Mil	2030
	0514-01-048	SH 240	FM 369	Ave D	Repair & Overlay	\$2.6 Mil	2030
8	0804-04-032	FM 368	US 287	FM 2345	Widen Existing Roadway	\$9.1 Mil	2030
9	0043-14-029	SL 11	FM 367	BU 277A	Mill & Overlay	\$831,000	2030

2027-2030 Rural TIP

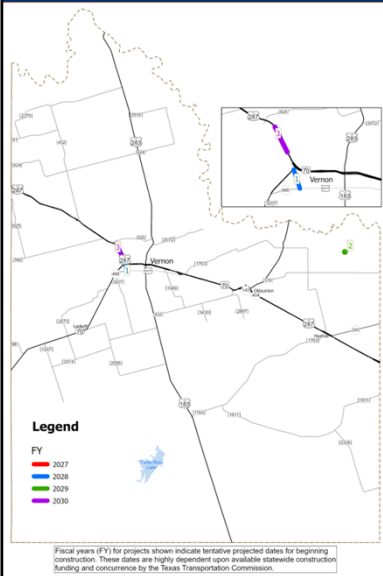
14

Moving into Wichita County’s projects in each TIP year 2027-2030, including widening US 82 between FM 369 and the Archer county line in 2028 at an estimated cost of just over 21-million dollars.

Constructing a direct connect interchange ramp for US 281 from State Highway 79 to Rathgeber Road in 2030 estimated at nearly \$17-million dollars.

And a widening of FM 368 in 2030 from US 287 to FM 2345 with an estimated cost of 9.1 million dollars.

### Rural TIP Wilbarger County Projects



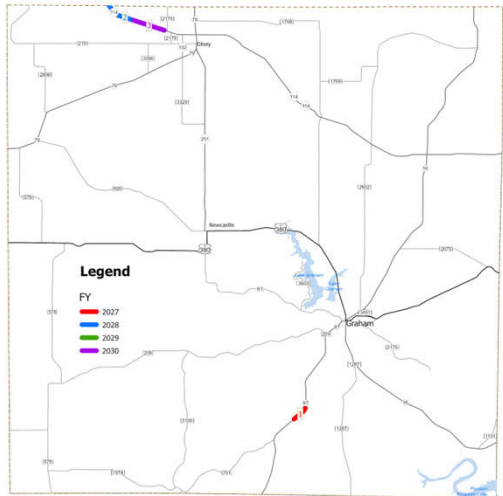
Fiscal years (FY) for projects shown indicate tentative projected dates for beginning construction. These dates are highly dependent upon available statewide construction funding and concurrence by the Texas Transportation Commission.

Map ID	CSJ	Highway	Limits from	Limits to	Project Description	Project Cost	TIP Year
1	0043-20-023	BU 287F	US 70 (College Drive)	SL 488 (Wilbarger Street)	Construct Pedestrian Infrastructure	\$1.06 Mil	2028
2	0903-30-049	CR 127	At Adams Creek		Replace Bridge and Approaches	\$828,750	2029
3	0043-05-122	US 287	US 287	At Pease River	Bridge Maintenance	\$1.5 Mil	2030

2027-2030 Rural TIP

15

In Wilbarger County, a sidewalk project on Hillcrest Drive/Business 287F from College Drive to Wilbarger Street in TIP Year 2028, an off-system county road bridge replacement in TIP Year 2029, and bridge maintenance on US 287 at the Pease River in 2030.



Fiscal years (FY) for projects shown indicate tentative projected dates for beginning construction. These dates are highly dependent upon available statewide construction funding and concurrence by the Texas Transportation Commission.

**2027-2030 Rural TIP**

**Rural TIP Young County Projects**

Map ID	CSJ	Highway	Limits from	Limits to	Project Description	Project Cost	TIP Year
1	0256-01-061	SH 67	At Brazos River		Bridge Maintenance	\$200,000	2027
2	0133-08-039	SH 114	Archer County Line	FM 2187N	Pavement Repair/Hot Rubber Seal	\$600,000	2028
3	0133-08-037	SH 114	Archer County Line	FM 2187N	Upgrade to Super-2	\$6.72 Mil	2030

And three projects for Young County in the 2027-2030 RTIP: bridge maintenance on SH 67 at the Brazos River in TIP Year 2027.

And a pair of projects on State Highway 114 from the Archer County Line to FM 2187 North, pavement repair in TIP Year 2028 followed by an upgrade to a Super-2 Highway in TIP Year 2030.

For additional project information and ADA Accessible documents, please visit the Wichita Falls District Rural TIP meeting Webpage.

## Funding

**The Rural TIP is a fiscally constrained list of projects that functions as a budgeting tool for our district.**

Funds can come from:

- **Federal Government**
  - **Majority through** the Federal Highway and Transit Administrations
- **State**
  - **Majority through TxDOT's** Unified Transportation Program funding categories
- **Region**
- **Local**

**2027–2030 Rural TIP**

**17**

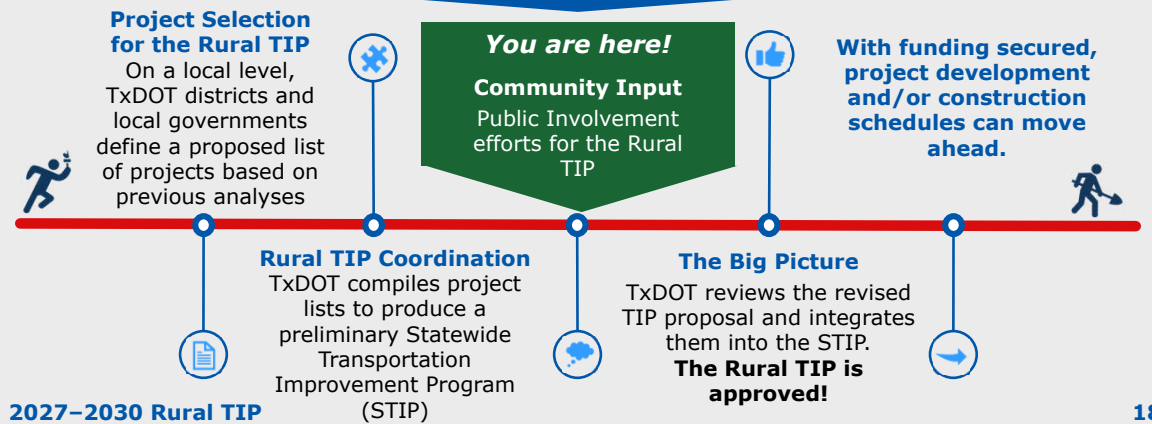
The Rural TIP functions as a budget list for the District. Therefore, it is fiscally constrained. Frequently we identify more improvements than we have money to implement. This means prioritizing according to those items that are most necessary.

Funds can come from multiple sources:

- 1) The Federal Government, through the establishment of the Infrastructure Investment and Jobs Act (IIJA), the federal government allocates these funds through the processes established by the Federal Highway and Transit Administrations.
- 2) TxDOT, like the Federal Government also allocates a section our budget for these projects through the Unified Transportation Program's 12 funding categories.
- 3) Region – certain transportation projects are allocated funding from regional entities
- 4) And the local governments. Once the need has been identified and the amount of federal monies has been defined, the Rural TIP helps local governments assess the funding requirements to match those of the federal and state government and their capacity to meet them.

## Next Steps

### In the Rural TIP Process



The timeline above illustrates the Rural TIP process and where we are right now.

Once comments have been collected and considered, if necessary, the Wichita Falls District can provide a revised Rural TIP for approval and integration into the statewide document.

The Statewide Transportation Improvement Program (STIP) is an accumulation of all 25 district's Rural TIPs, and the 24 Metropolitan Planning Organization's TIPs, and additional Statewide Programs. For example: Texas Parks and Wildlife Program, Federal Land, Tribal Projects, Statewide Transit, etc.

The timeline above shows where the Rural TIP process fits into this larger effort. Once the STIP is approved by the Federal government, everyone's projects are considered approved.

## Next Steps (Continued)

### How to provide comments:

**1. Mail a comment to:**

Texas Department of Transportation  
Wichita Falls District, Attn: Warren McDonald  
1601 Southwest Parkway  
Wichita Falls, TX 76302

**2. Or email a comment to:**

Warren.McDonald@Txdot.gov, Attention: Rural TIP

Remember to submit your comments by **May 19, 2026** to be included  
in the official summary of this meeting.

Now that you are familiar with the Program, we want to hear what you think. Comments can be mailed to us at the address on the screen.

You can also email in your comments to: [Warren.McDonald@txdot.gov](mailto:Warren.McDonald@txdot.gov)

Comments must be postmarked or otherwise received by May 19<sup>th</sup>, 2026. Please make sure to send your comments before that date.

If after today, you would like more information or have any other questions, feel free to reach out or visit the District Webpage for updates.

Please share this information with your friends and family! And remind them to make sure they send in their comments before May 19<sup>th</sup>, 2026. Thank you for your time and drive safely!