



Feb. 19, 2026

# Bay City Relief Route Feasibility Study

**Matagorda County, Texas**  
**CSJ: 0179-04-114**

Virtual Public Meeting with In-Person Option

## Drive Like A Texan



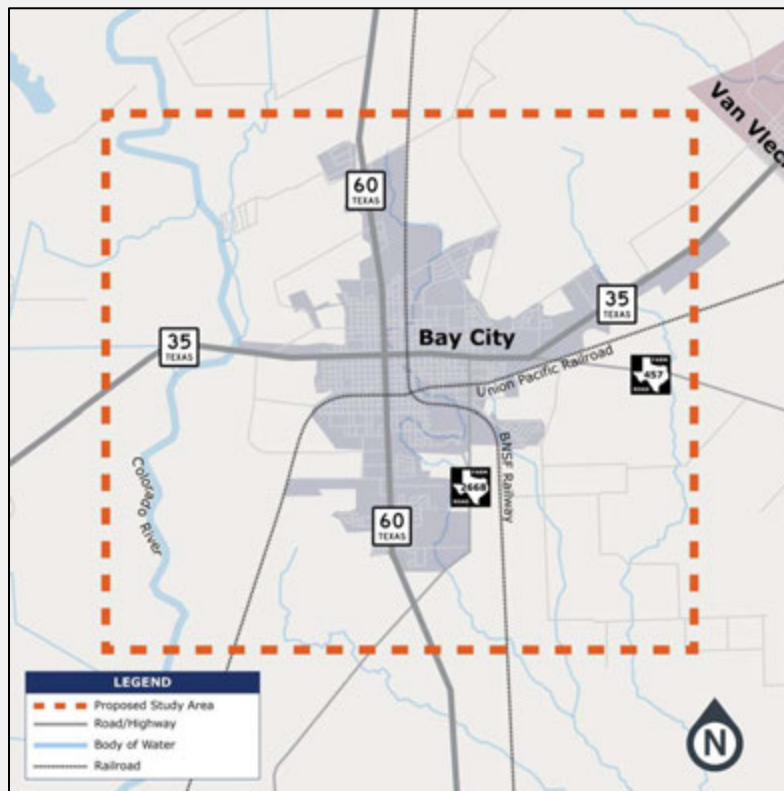
## Table of Contents

<b>4</b>	Study Location & Overview	<b>21</b>	Feasibility Study Process
<b>5</b>	Existing Typical Sections	<b>22</b>	Public Feedback
<b>7</b>	Crash Data	<b>23</b>	How to Provide Comments
<b>14</b>	Proposed Typical Sections	<b>24</b>	Learn More
<b>15</b>	Environmental Constraints		
<b>20</b>	Project Development Process		

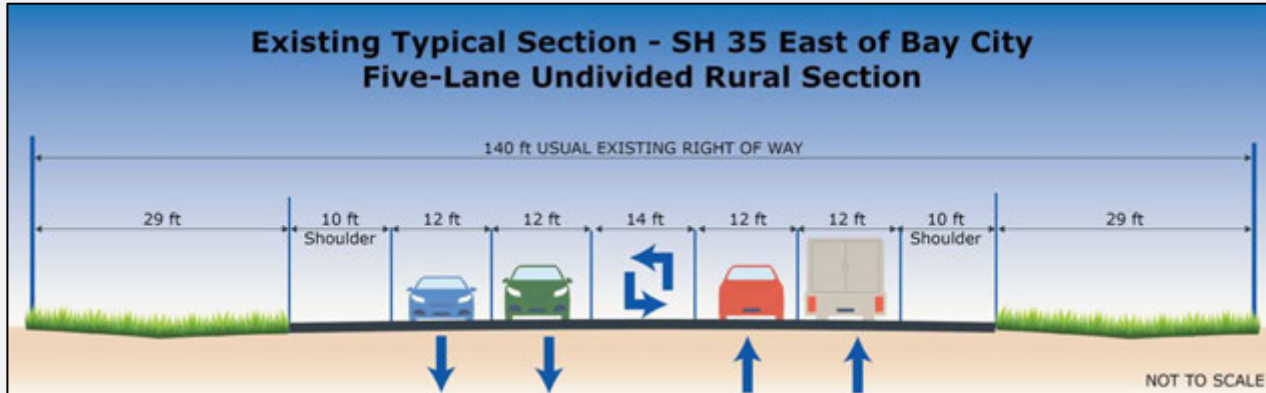
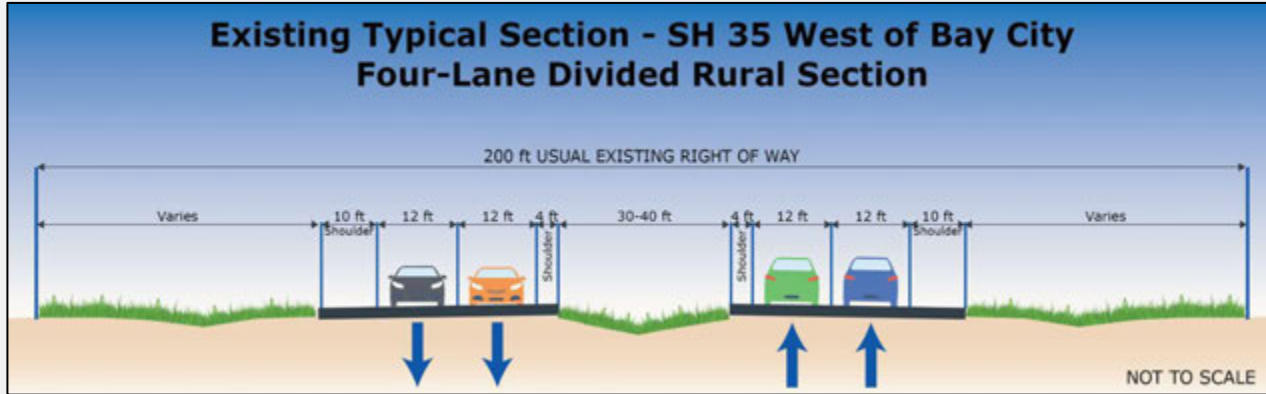
## Study Location and Overview

TxDOT is conducting a feasibility study to explore a potential relief route around the City of Bay City.

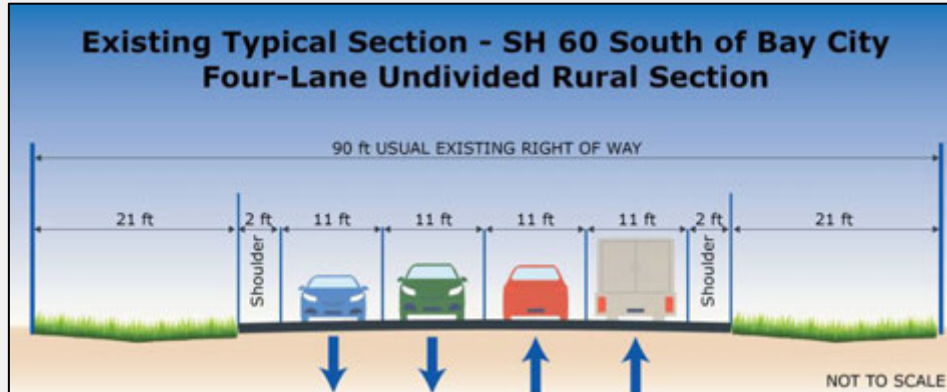
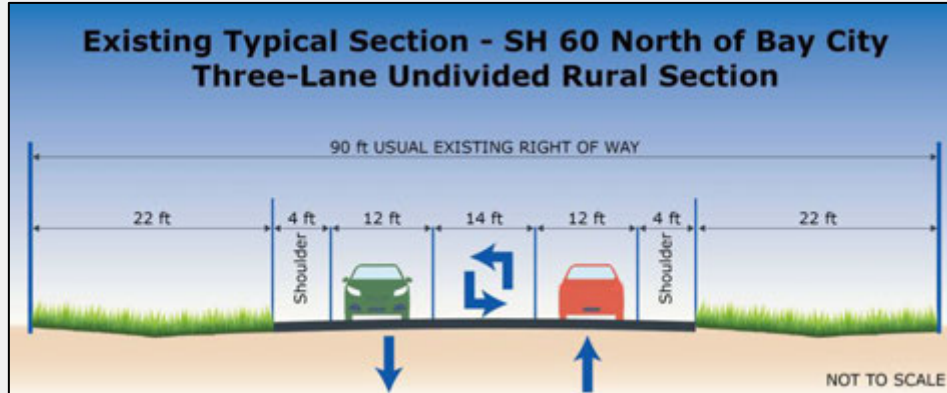
The purpose of the relief route is to help reduce congestion, while also improving safety and mobility.



# Existing Typical Sections – SH 35



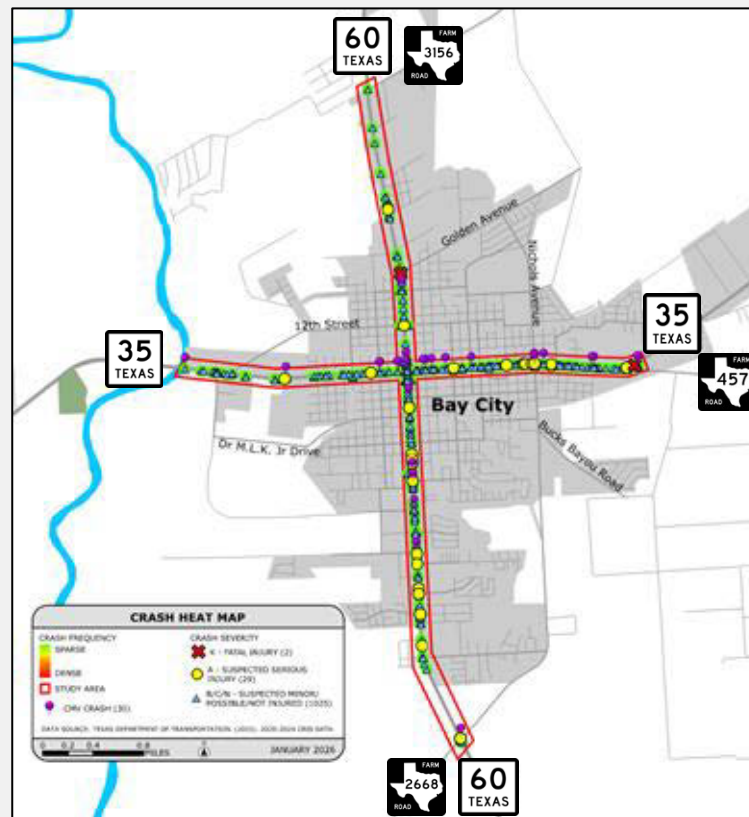
## Existing Typical Sections – SH 60



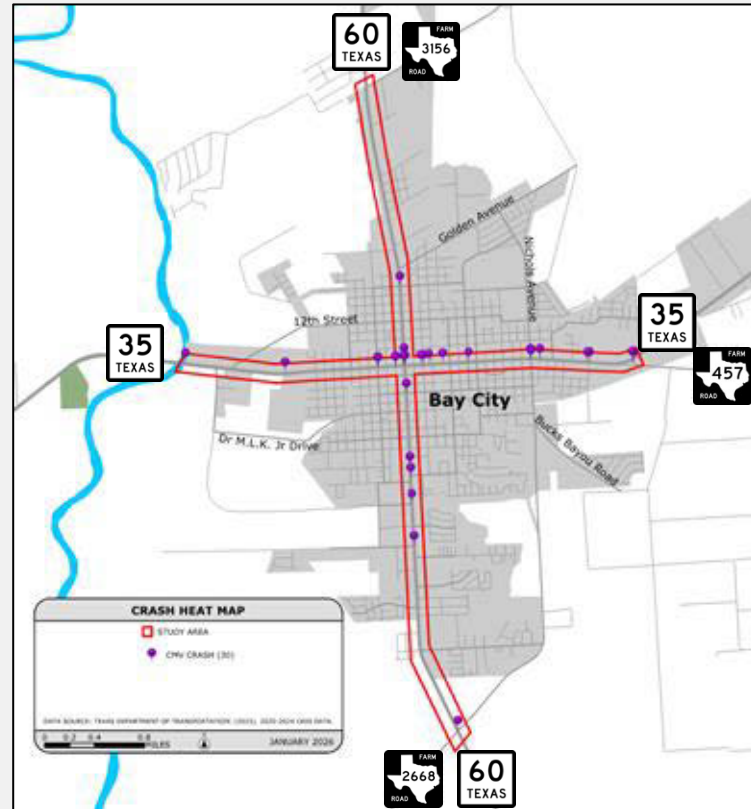
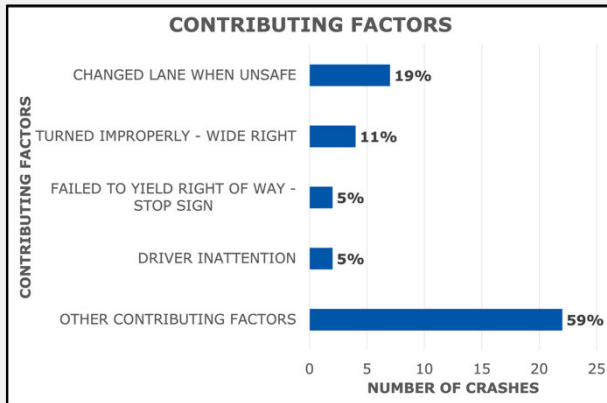
## Crash Summary

- 1,056 crashes
- 2 fatal injury crashes
- 29 suspected serious injury crashes
- 30 involved commercial motor vehicles

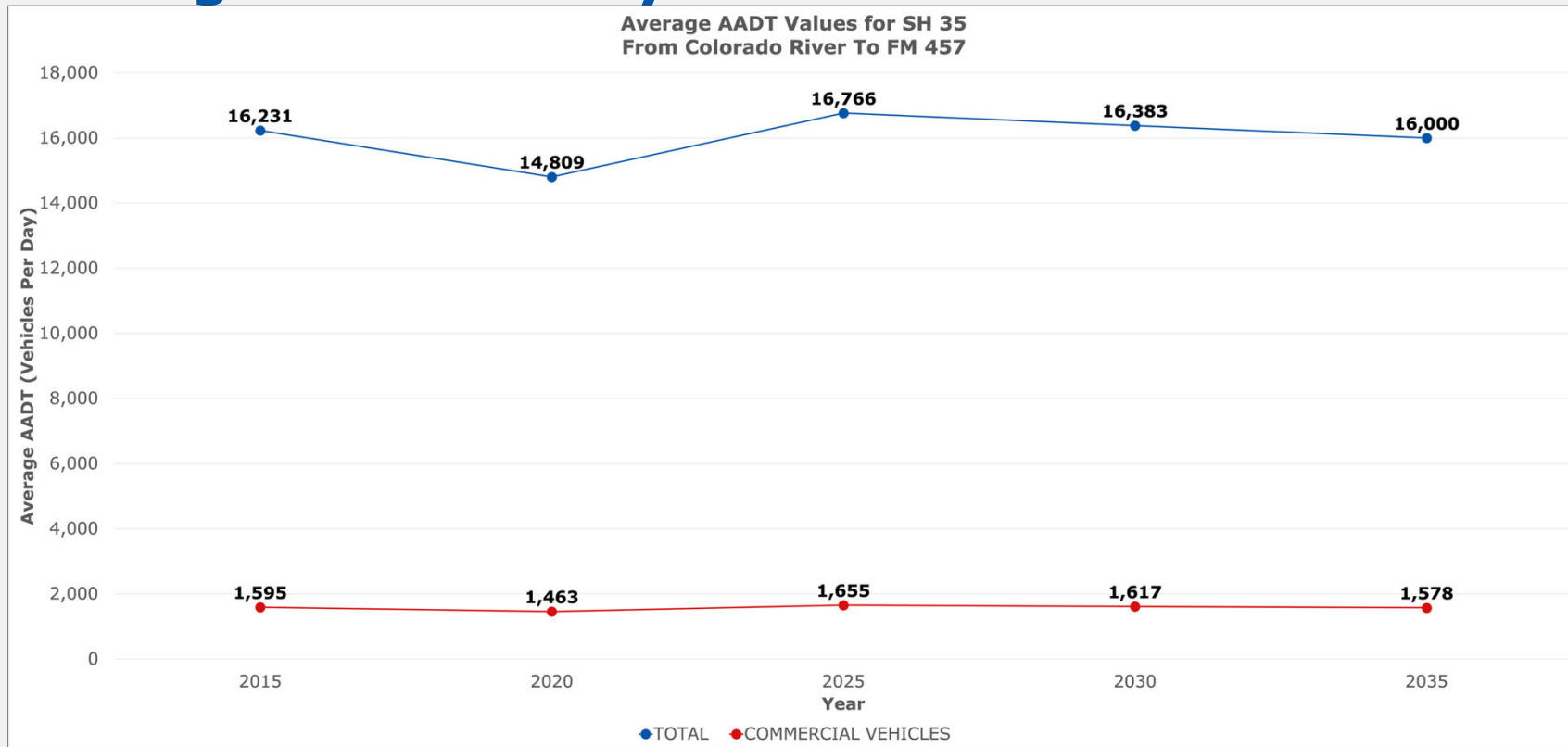
Data from 2020 to 2024



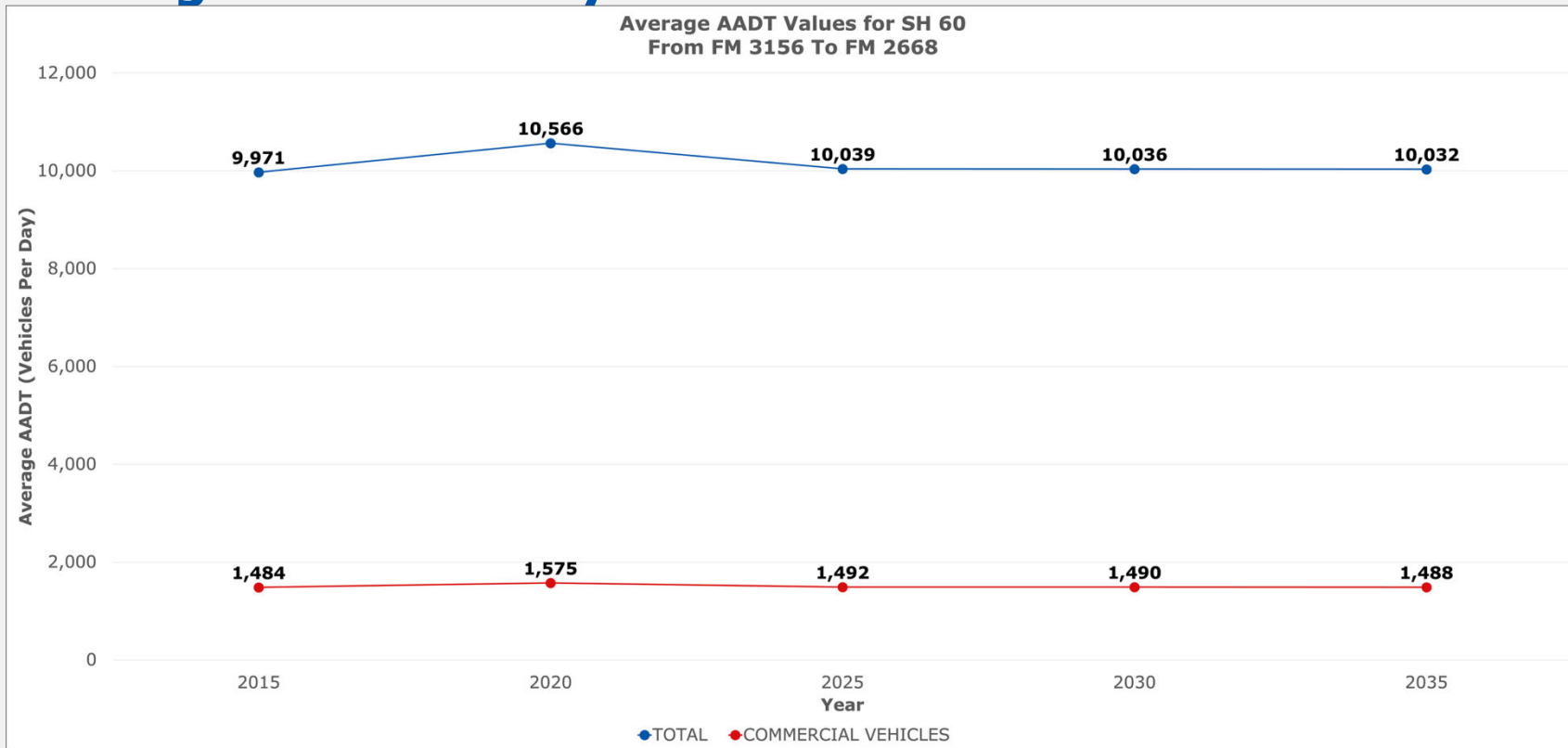
# Crash Summary – Commercial Motor Vehicles



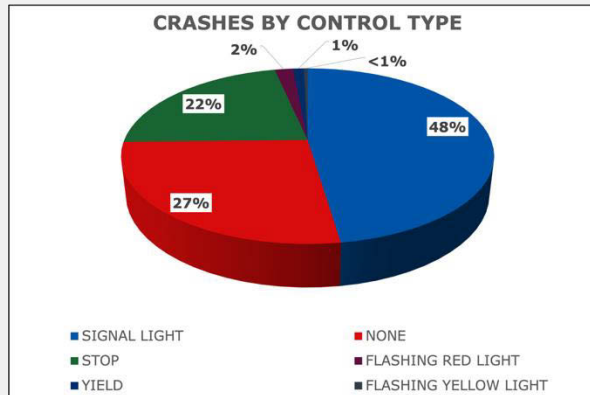
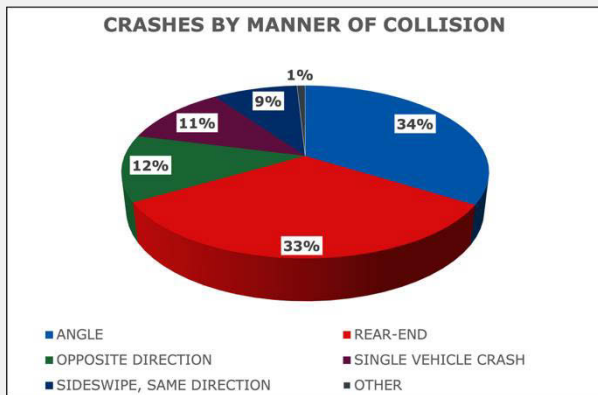
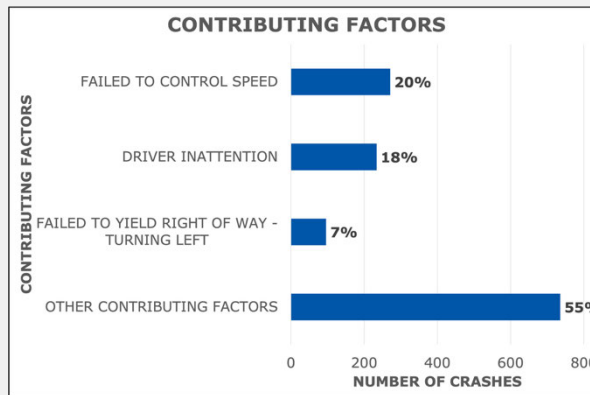
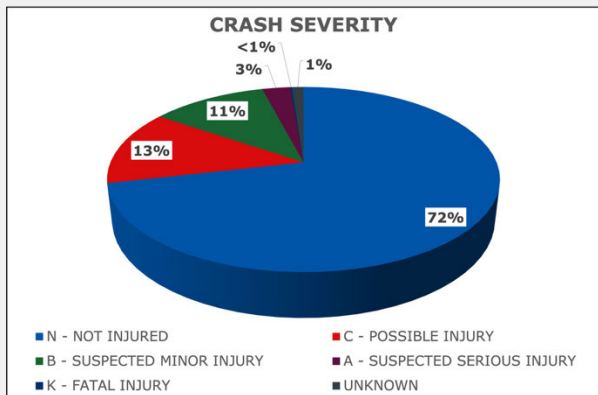
# Average Annual Daily Traffic: SH 35



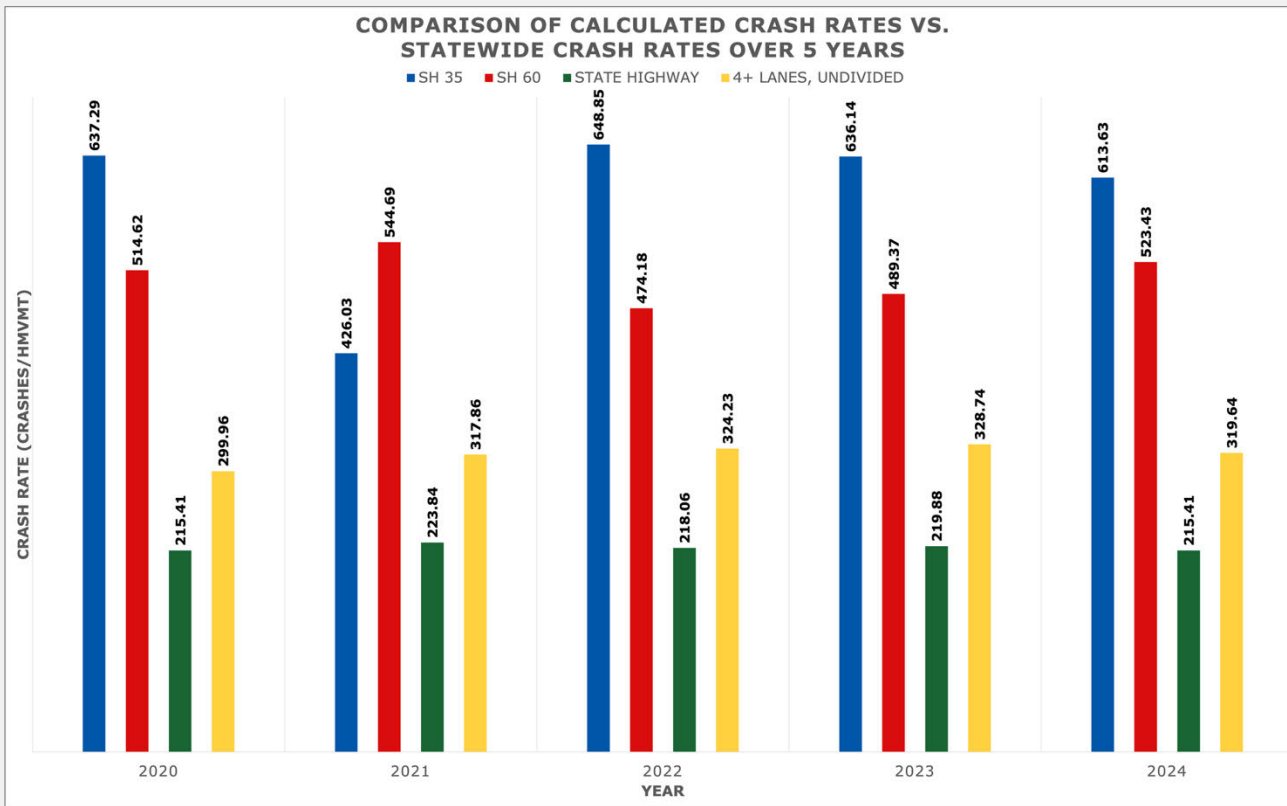
# Average Annual Daily Traffic: SH 60



# Safety Analysis – Summary Charts



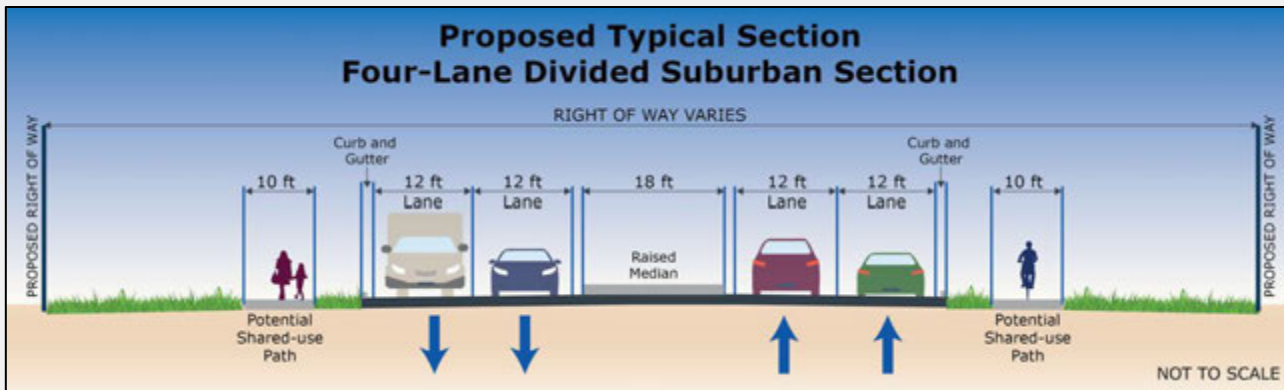
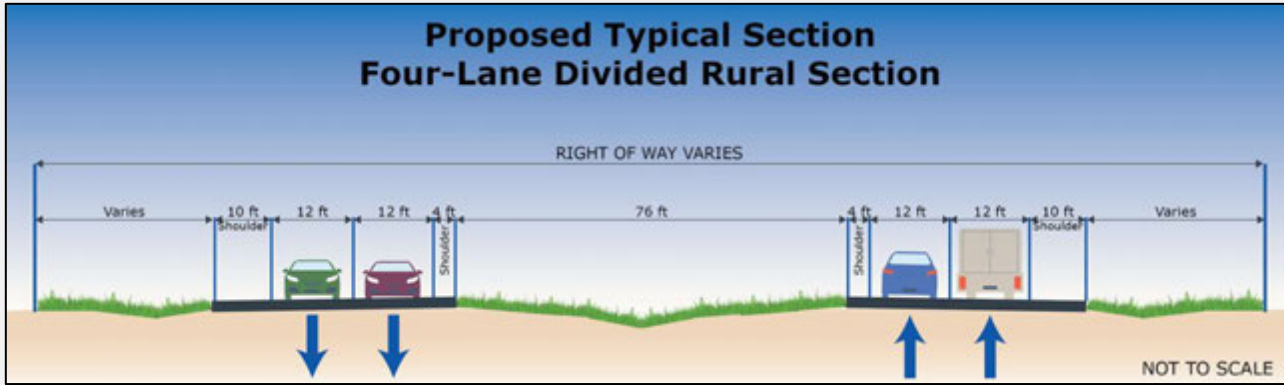
# Safety Analysis – Crash Rates



# SH 35 and SH 60 Origin and Destination Study

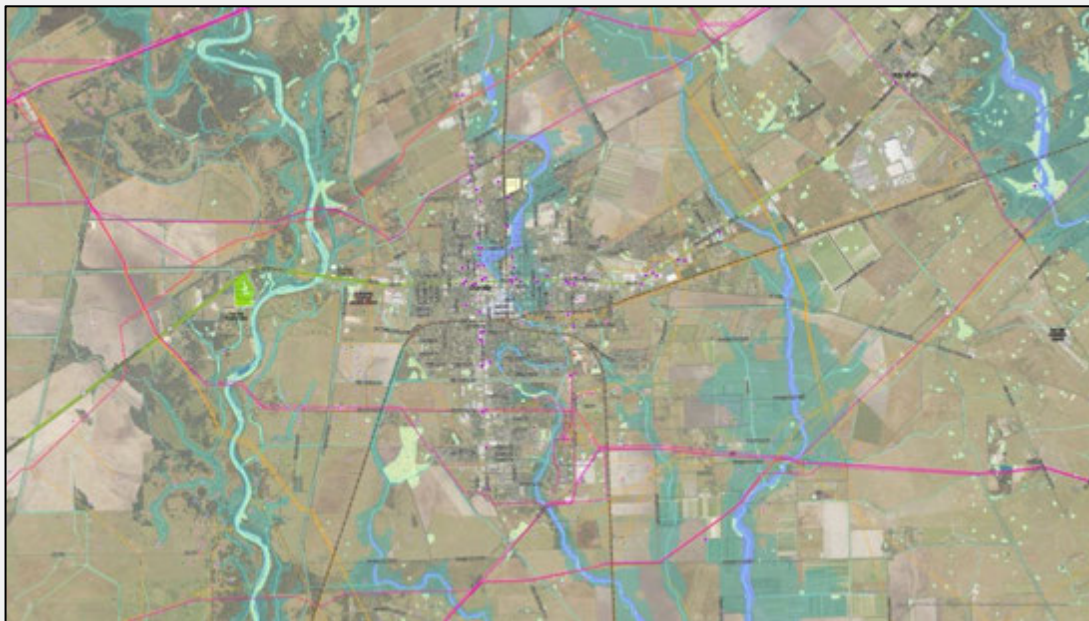


# Proposed Typical Sections



## Study Area Environmental Constraints

- In addition to safety analyses, TxDOT considers environmental features such as biological resources, water resources, historical resources and community resources when developing solutions.
- This environmental constraints map shows the full study area.



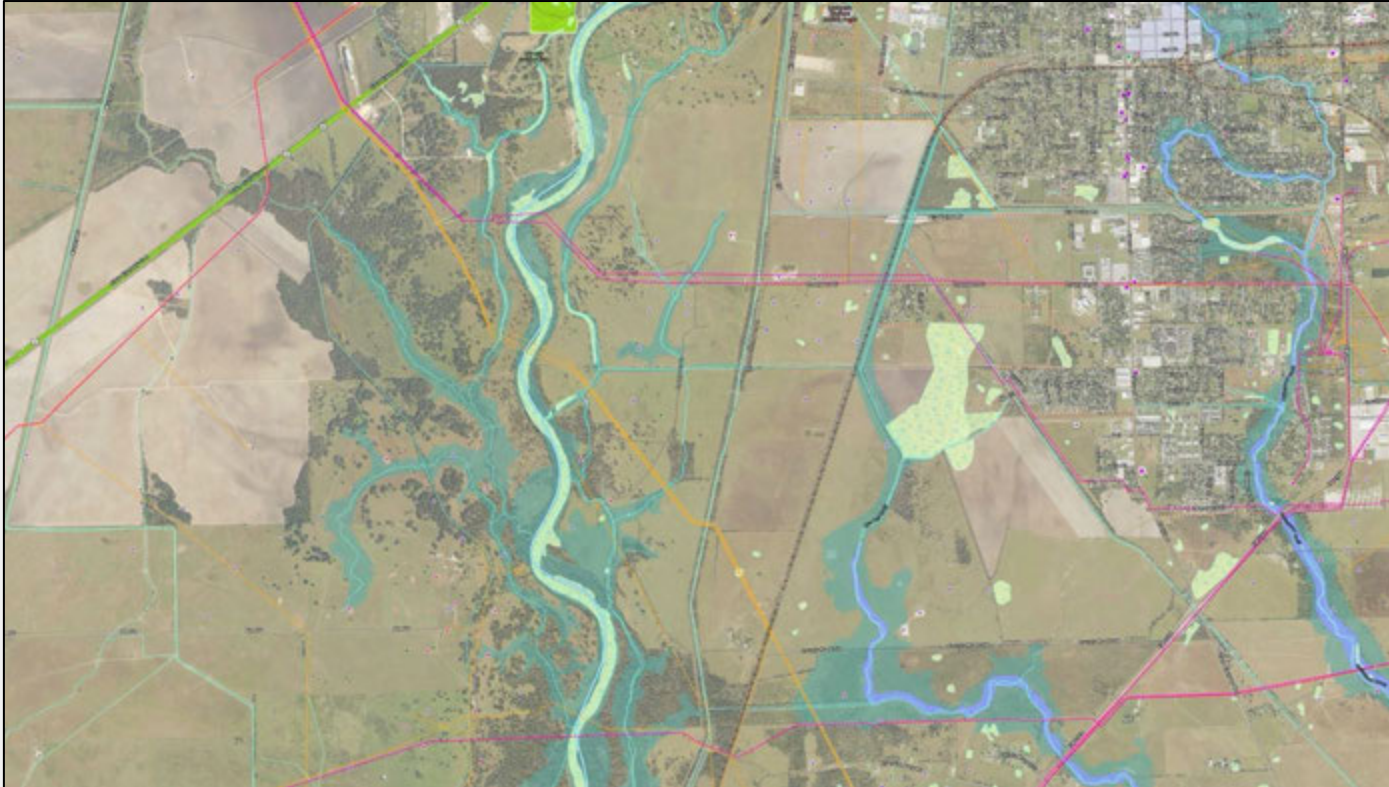
## Study Area Environmental Constraints - Northwest



## Study Area Environmental Constraints - Northeast



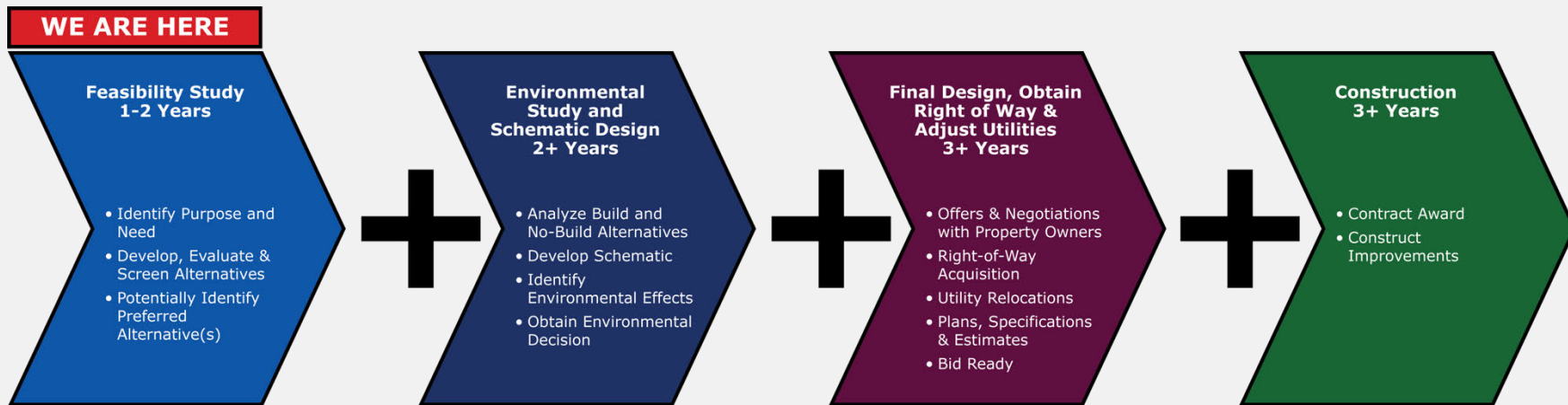
## Study Area Environmental Constraints - Southwest



## Study Area Environmental Constraints - Southeast



# Project Development Process



This timeline includes many variables which are subject to change.

Ongoing Public Involvement and Meeting Opportunities

## Feasibility Study Process



This schedule is preliminary and subject to change.

## Your feedback helps develop solutions

- What would you consider a priority that a potential relief route should address?
- Are there any local community impacts of which TxDOT should be aware of as they continue the feasibility study that are not currently identified on the environmental constraint maps?
- How do you think transportation needs in this area may change over the next 10 to 20 years?
- What other important information would you like the project team to know?

## How to Provide Comments

Your comments and questions are welcome. To submit a comment, please use one of the options below.



### Comment Form

Submit a comment form at the in-person meeting.



### Email

Jonathan.Rogers@txdot.gov



### Mail

TxDOT Yoakum District  
ATTN: Jonathan Rogers  
403 Huck St.  
Yoakum, TX 77995



### Online Form

Visit [www.txdot.gov](http://www.txdot.gov), keyword search "Bay City Relief Route" and complete the online comment form.

*Comments must be received or postmarked by **Friday, March 6, 2026**, to be included in the official public meeting summary.*

## Learn More



For more information about this project, please scan the QR code above or visit [www.txdot.gov](http://www.txdot.gov), keyword search "Bay City Relief Route."

# Thank You!