

# Welcome

## Sealy Relief Route Feasibility Study

Austin County, Texas | CSJ: 0187-03-085

# PUBLIC MEETING

**Thursday, May 7, 2026**

**Sealy Columbus Club**

**1310 Hwy 90 West, Sealy, TX 77474**

- 1 Please sign in
- 2 View exhibits
- 3 Ask questions and provide comments



# Pre-Recorded Exhibit Board Overview

Grab a seat and listen to a high-level explanation of the content presented on the exhibit boards at this public meeting.

This pre-recorded overview is also available online.

**There will be no formal presentation.**

Visit [www.txdot.gov](http://www.txdot.gov) and keyword search "Sealy Relief Route" or scan the QR code:

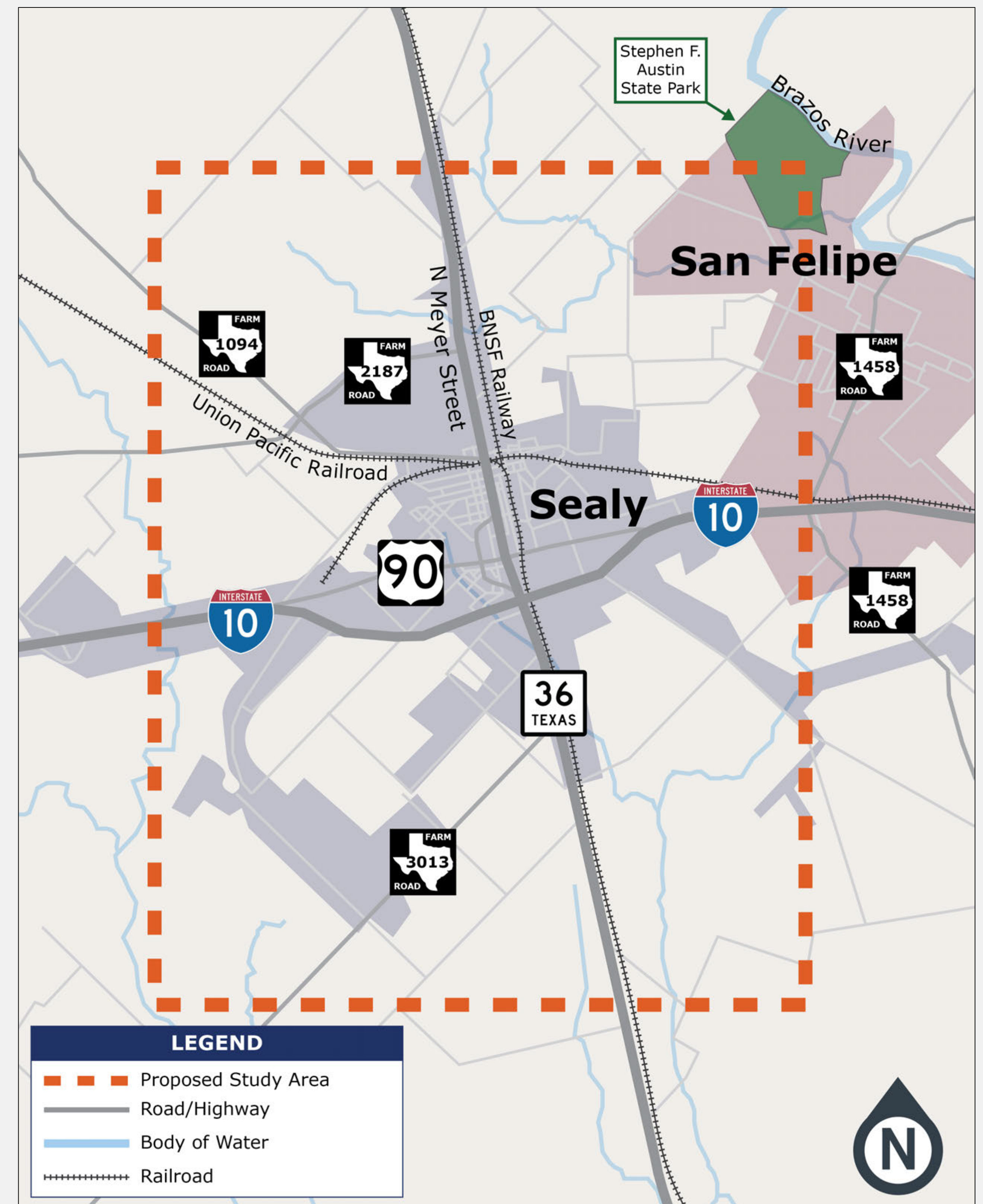


# Study Overview

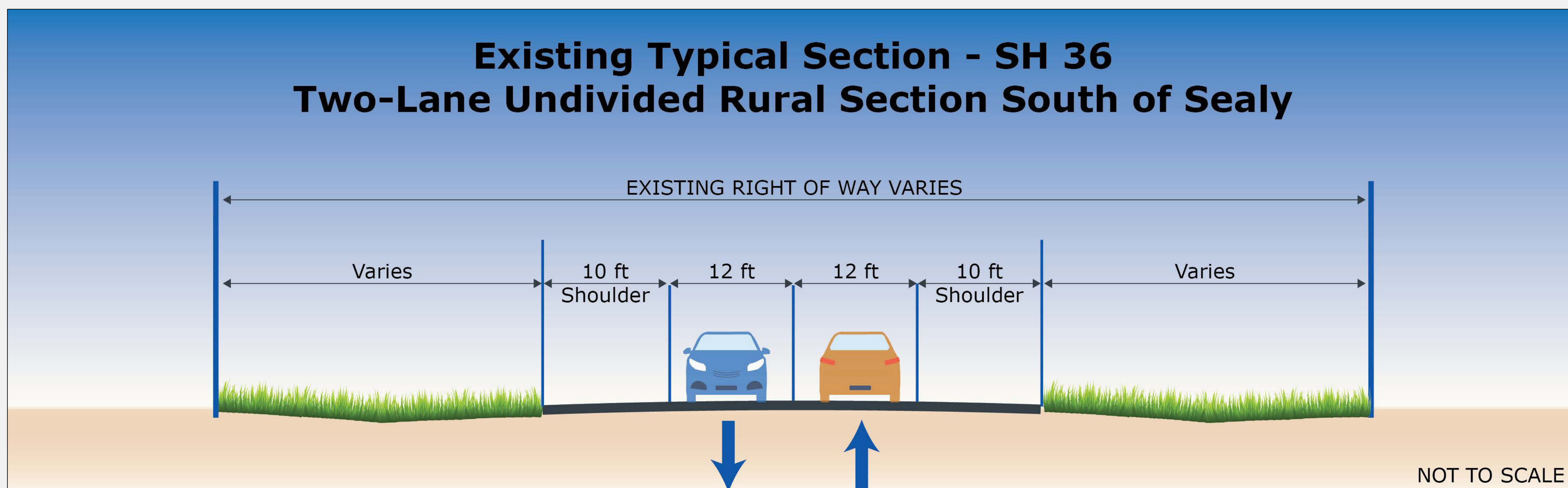
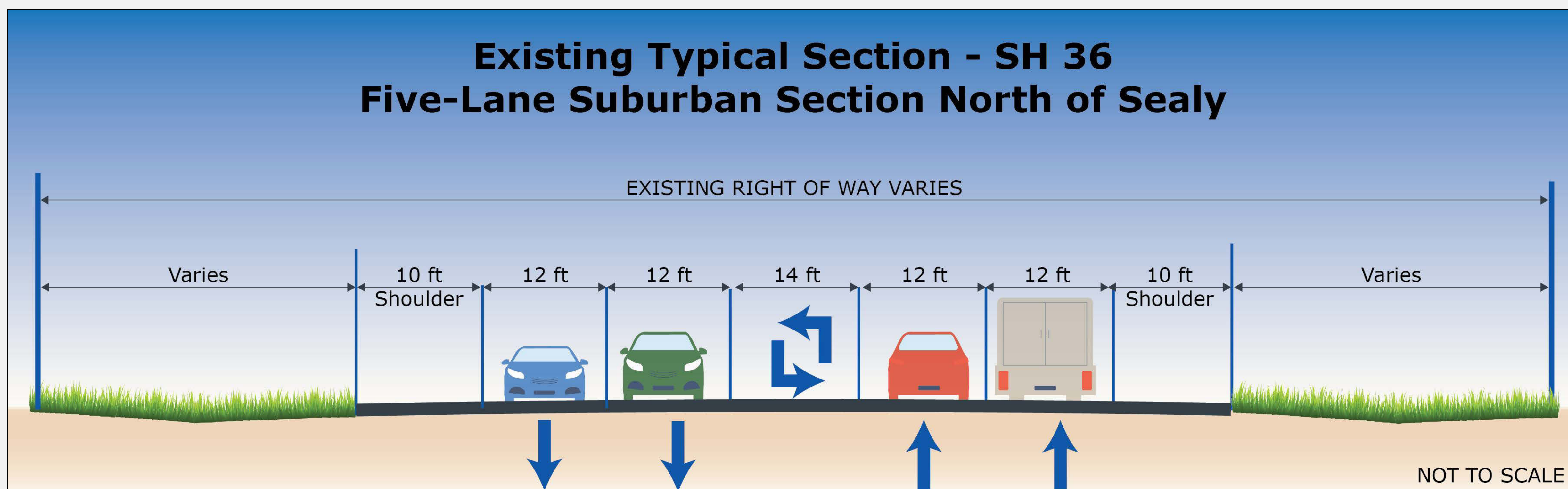
TxDOT is conducting a feasibility study to explore a potential relief route around the City of Sealy.

The purpose of the relief route is to help reduce congestion, while also improving safety and mobility.

## Study Area Map



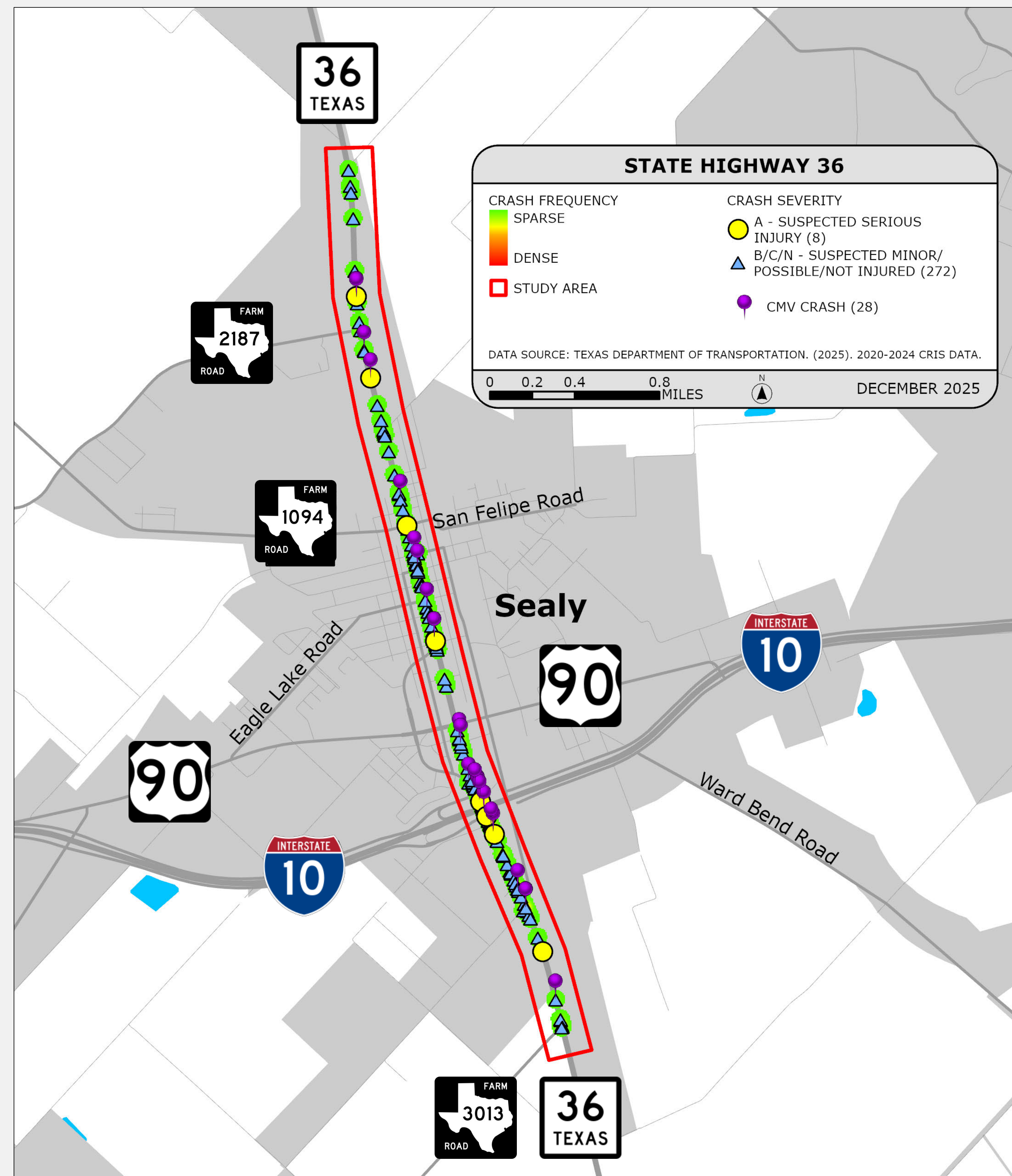
# Existing Roadway Characteristics



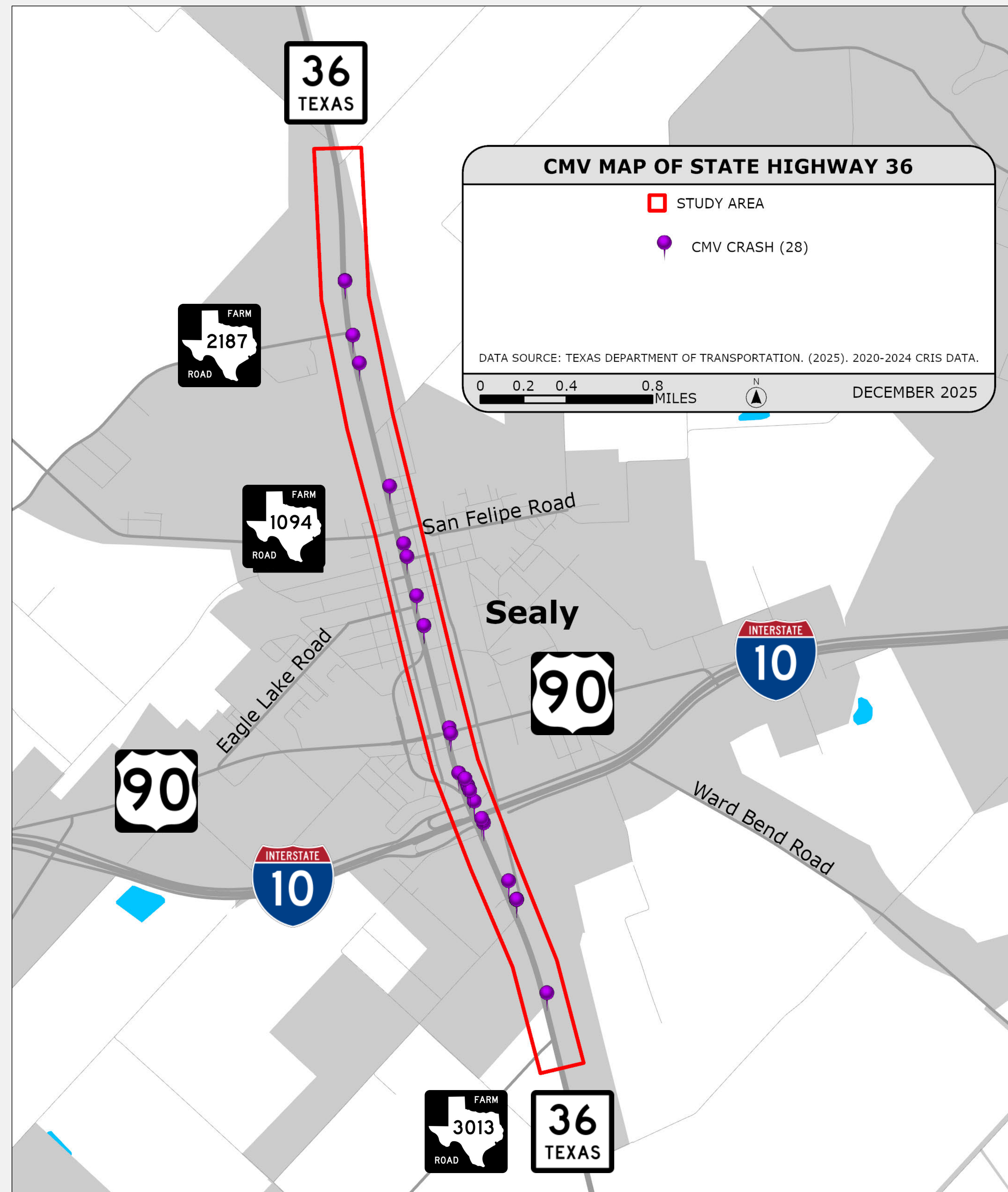
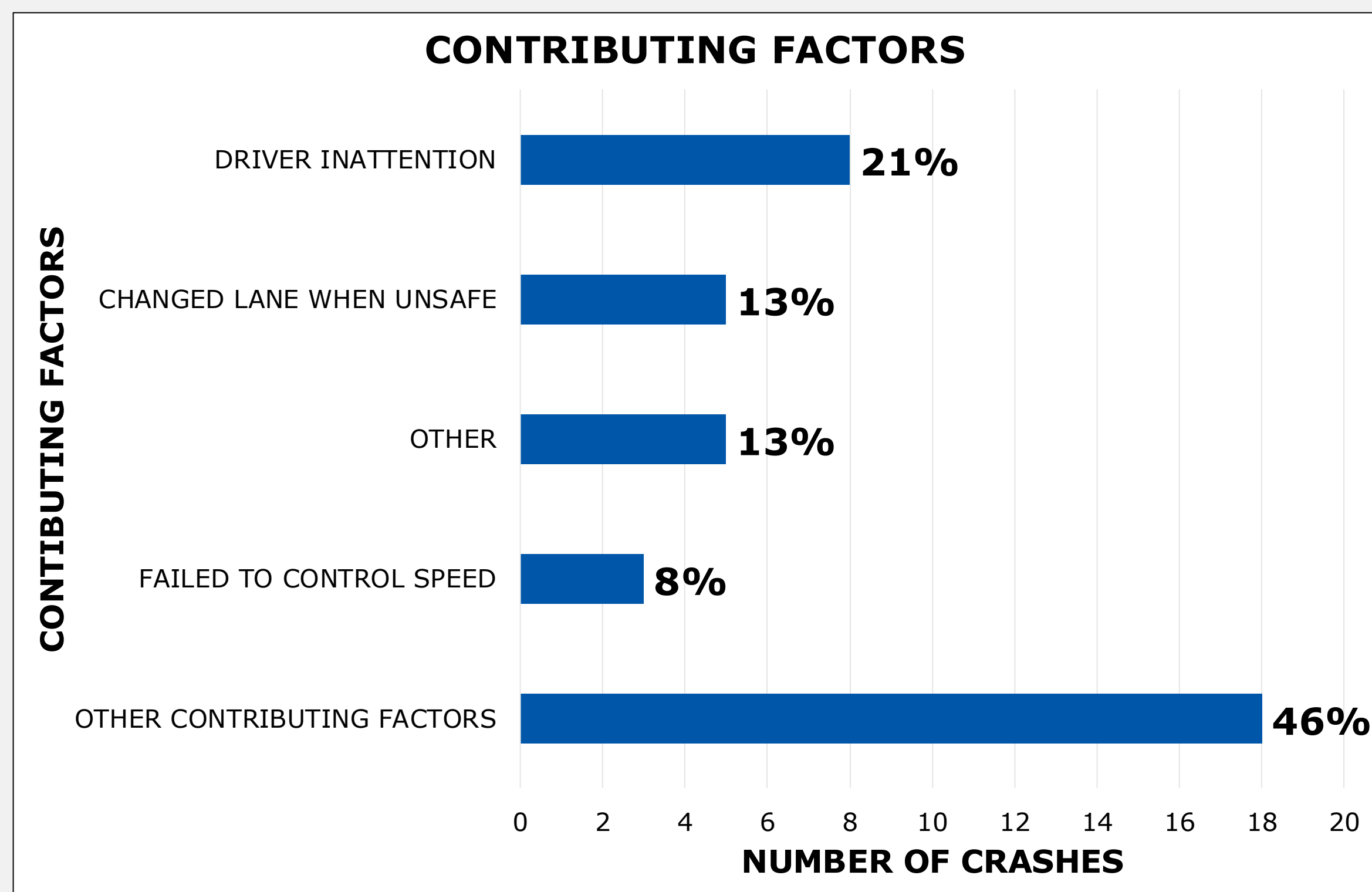
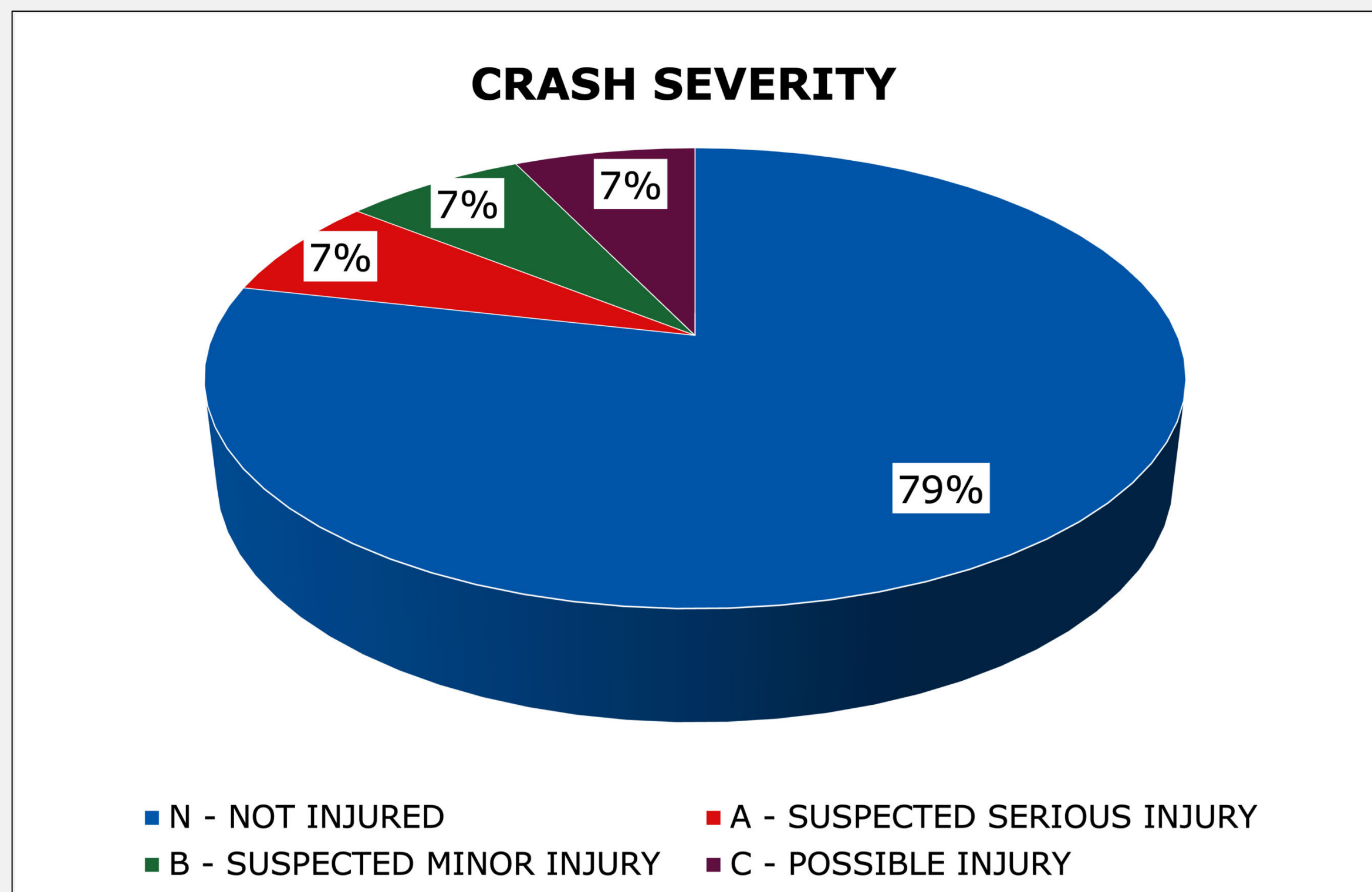
# Crash Summary

- 280 crashes
- No fatal crashes
- 8 suspected serious injury crashes
- 28 involved commercial motor vehicles (CMV)

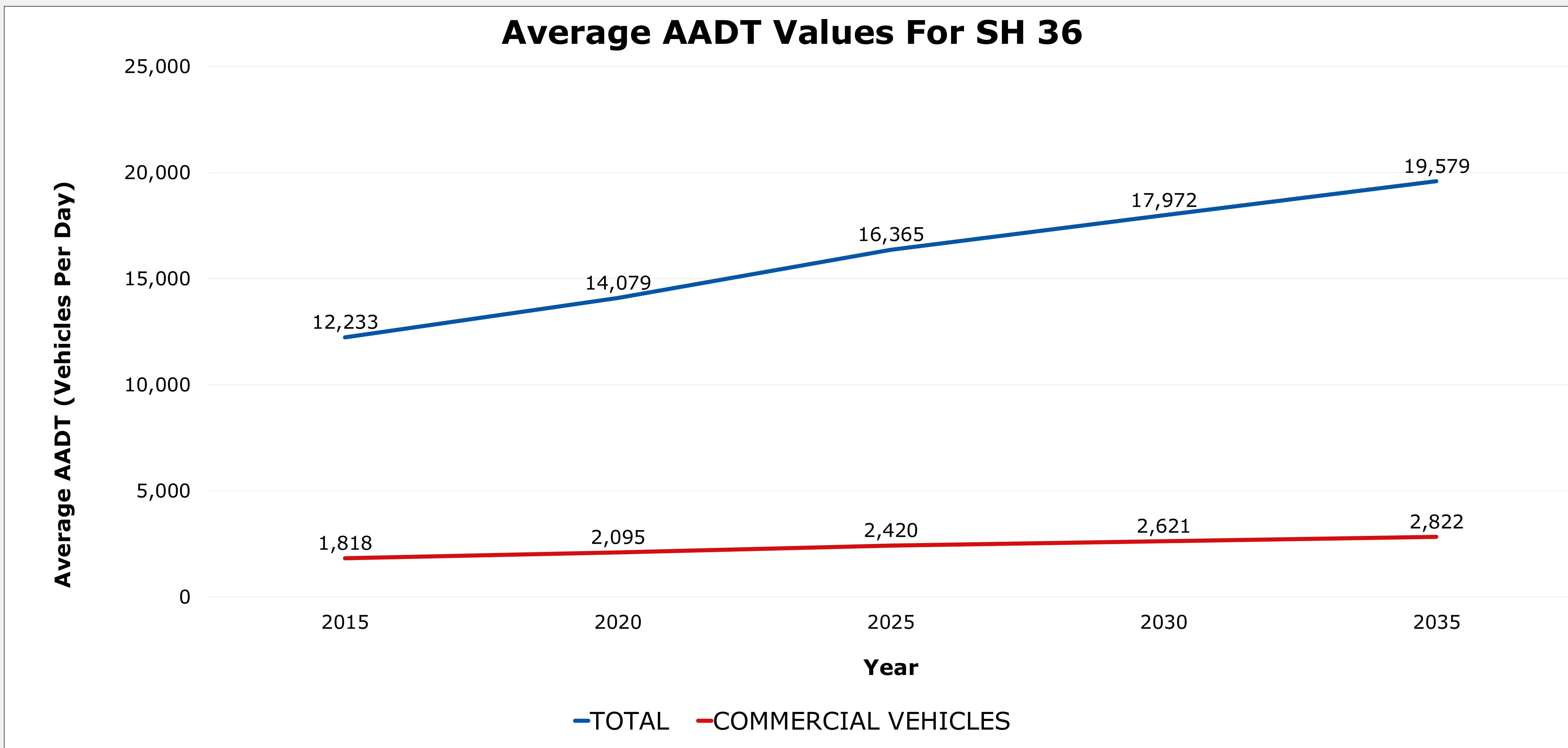
Data from 2020 to 2024



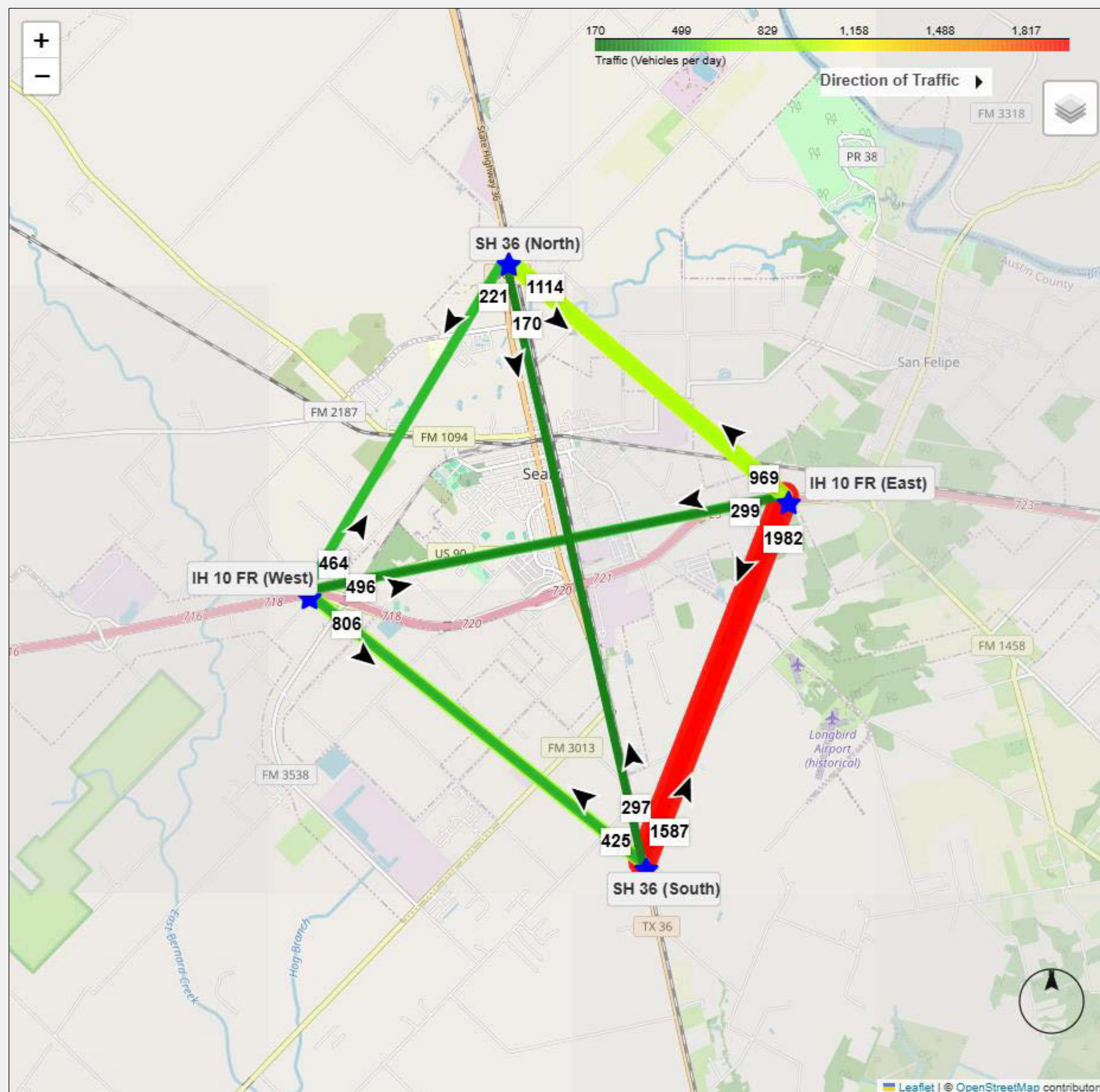
# Crash Summary – CMV



# AADT

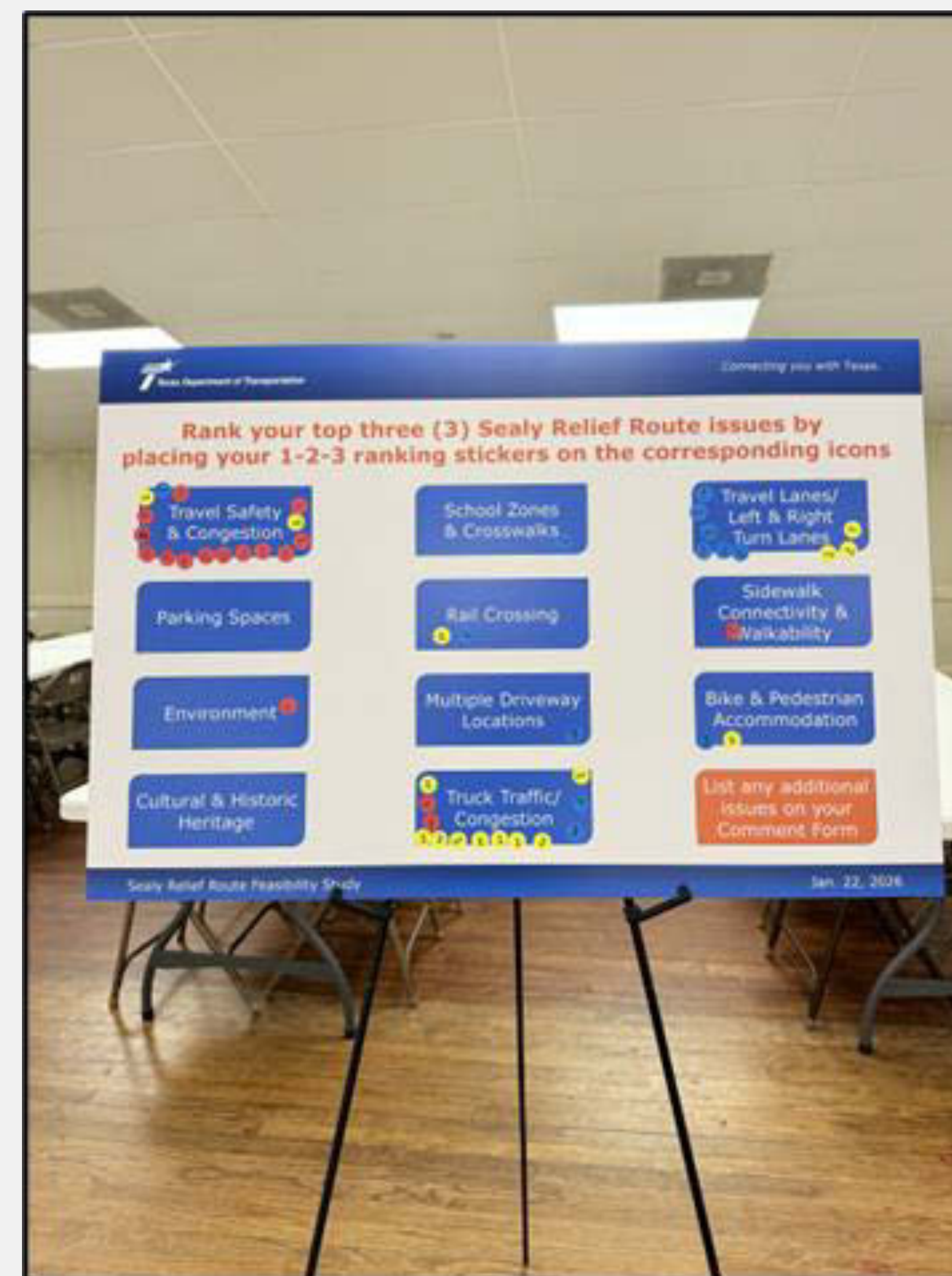


# SH 36 Origin and Destination Study

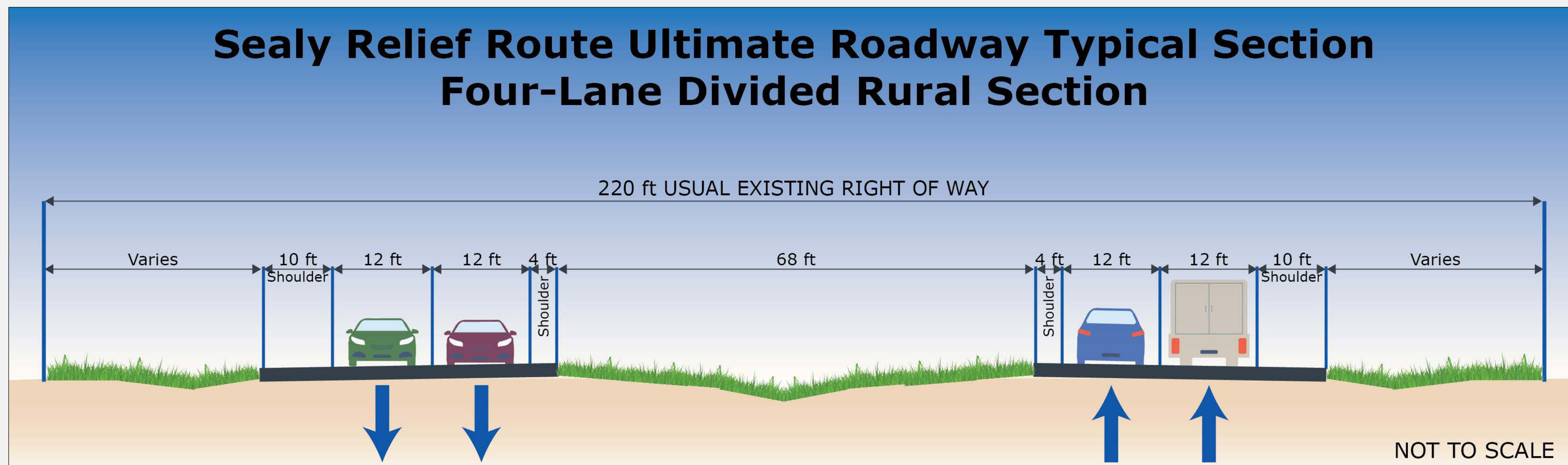


## What We Heard

- During the previous public meeting on Jan. 22, 2026, community members provided input on potential solutions to meeting the purpose of the proposed relief route.
- The public also helped to identify their top three issues:
  1. Travel safety and congestion
  2. Truck traffic and/or congestion
  3. Travel lanes and/or left and right turn lanes

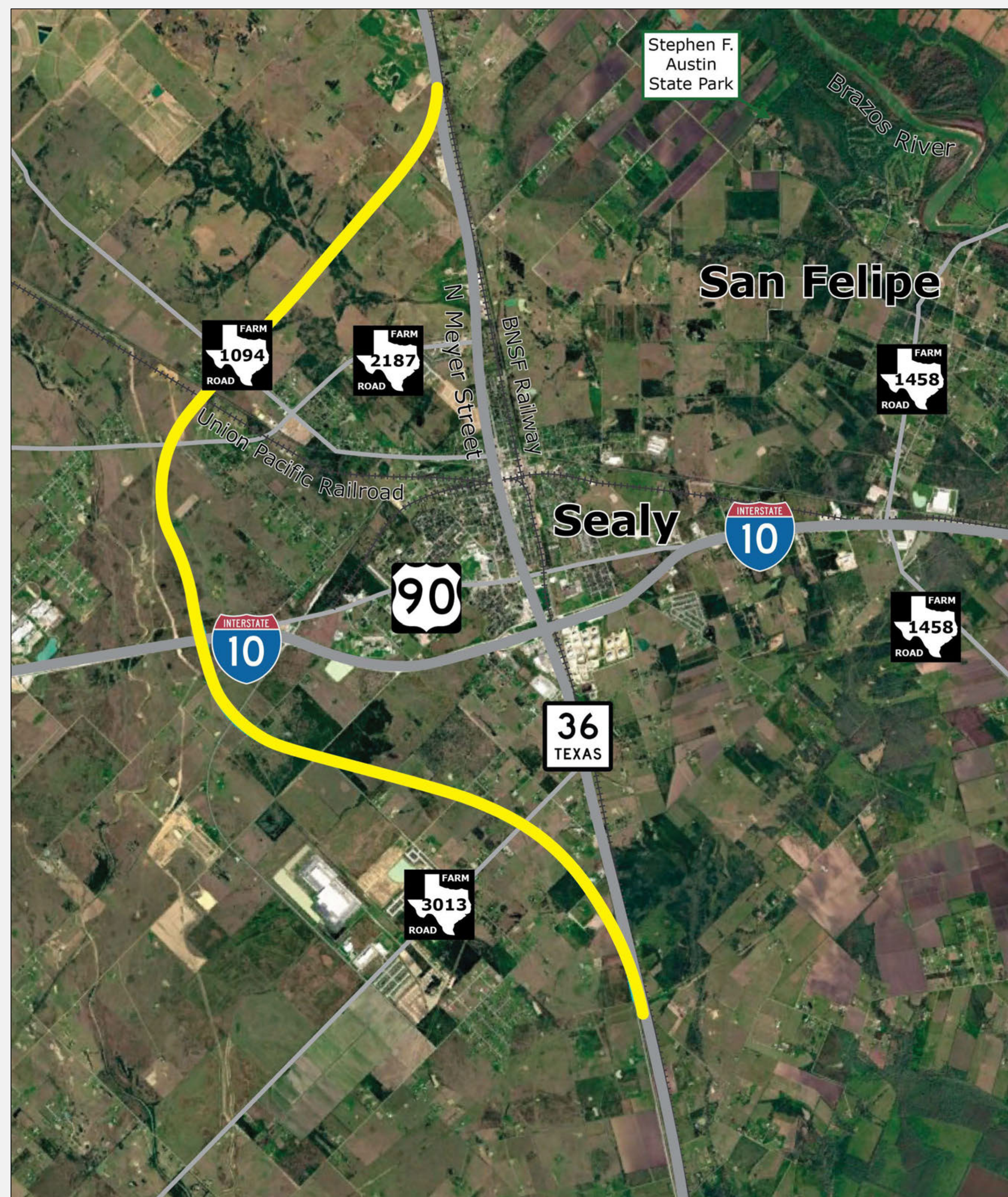


# Ultimate Roadway Typical Section



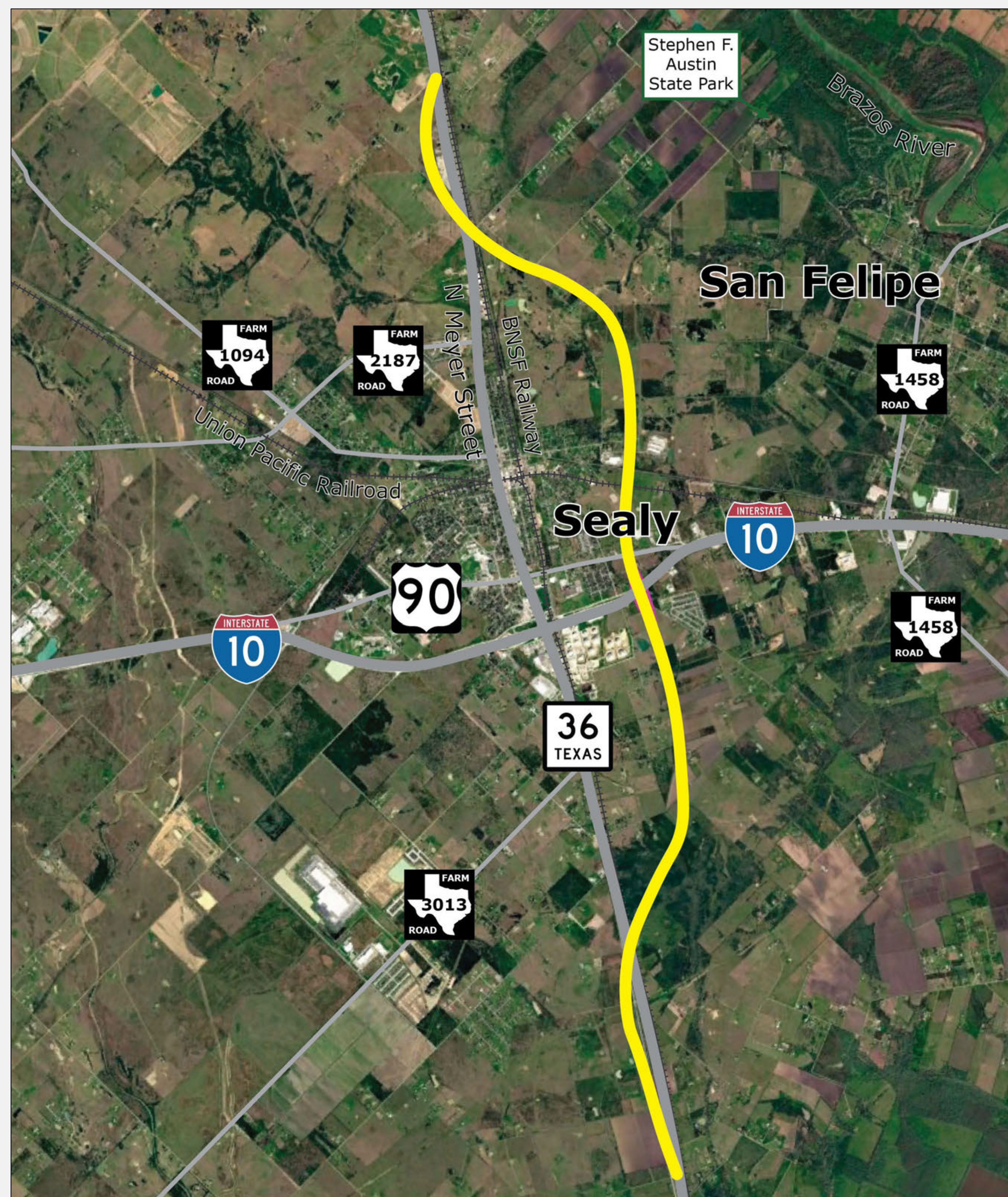
An ultimate roadway typical section would include two 12-foot lanes in each direction with 10-foot outside shoulders and 4-foot inside shoulders. It would also include a depressed grassy median.

# Relief Route Alternative 1



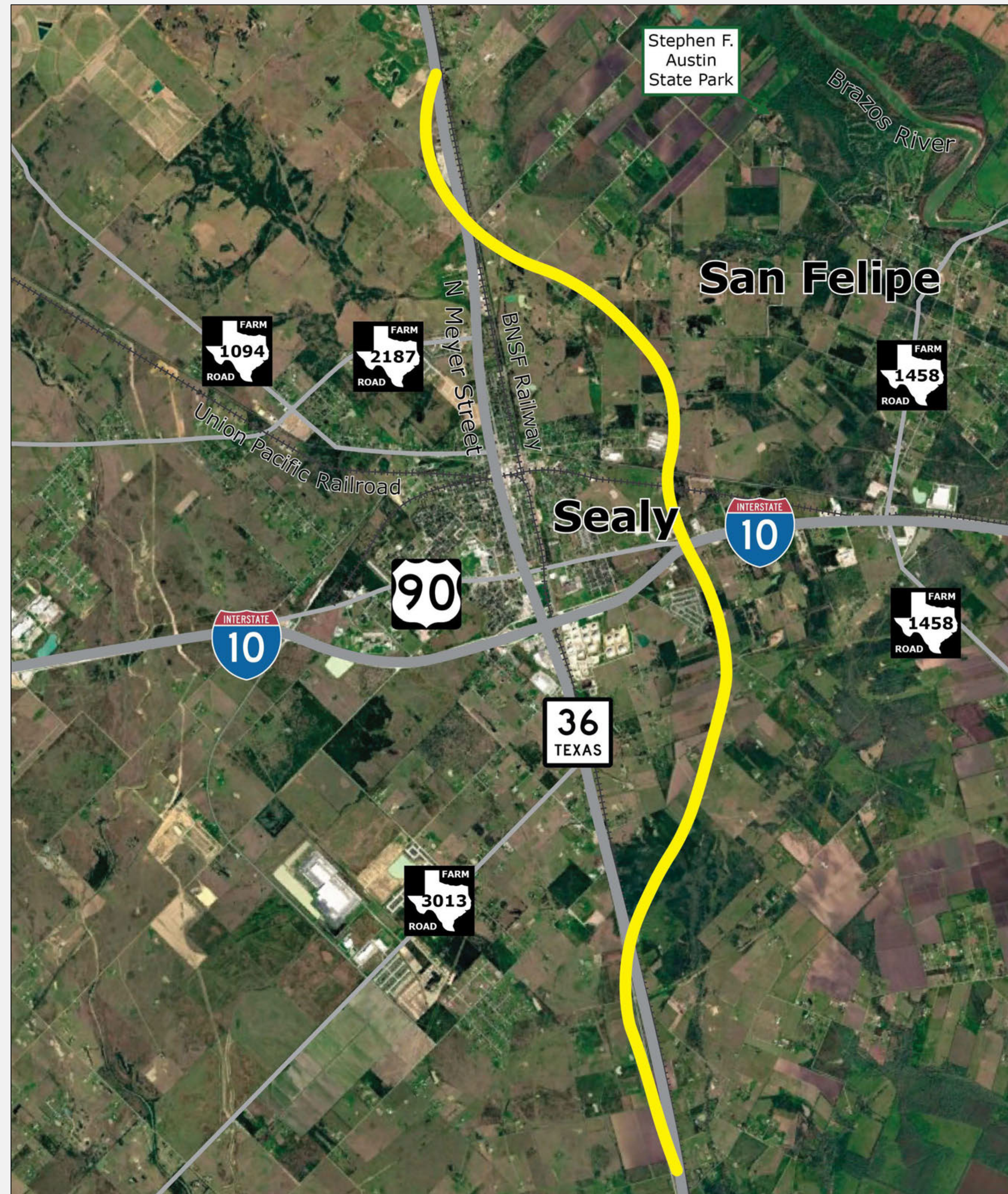
**PRELIMINARY AND  
SUBJECT TO CHANGE**

# Relief Route Alternative 2



**PRELIMINARY AND  
SUBJECT TO CHANGE**



# Relief Route Alternative 3



**PRELIMINARY AND  
SUBJECT TO CHANGE**

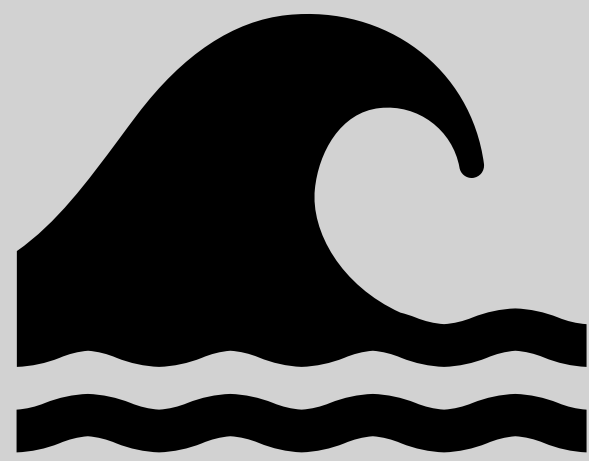
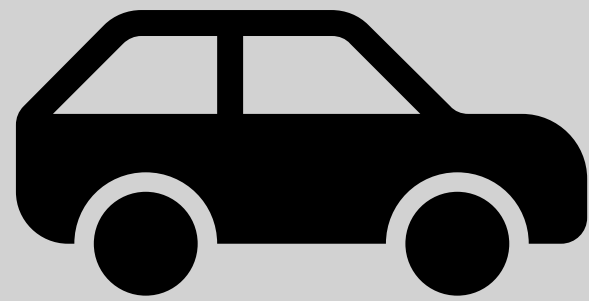
# Alternatives Analysis

**PRELIMINARY AND SUBJECT TO CHANGE**

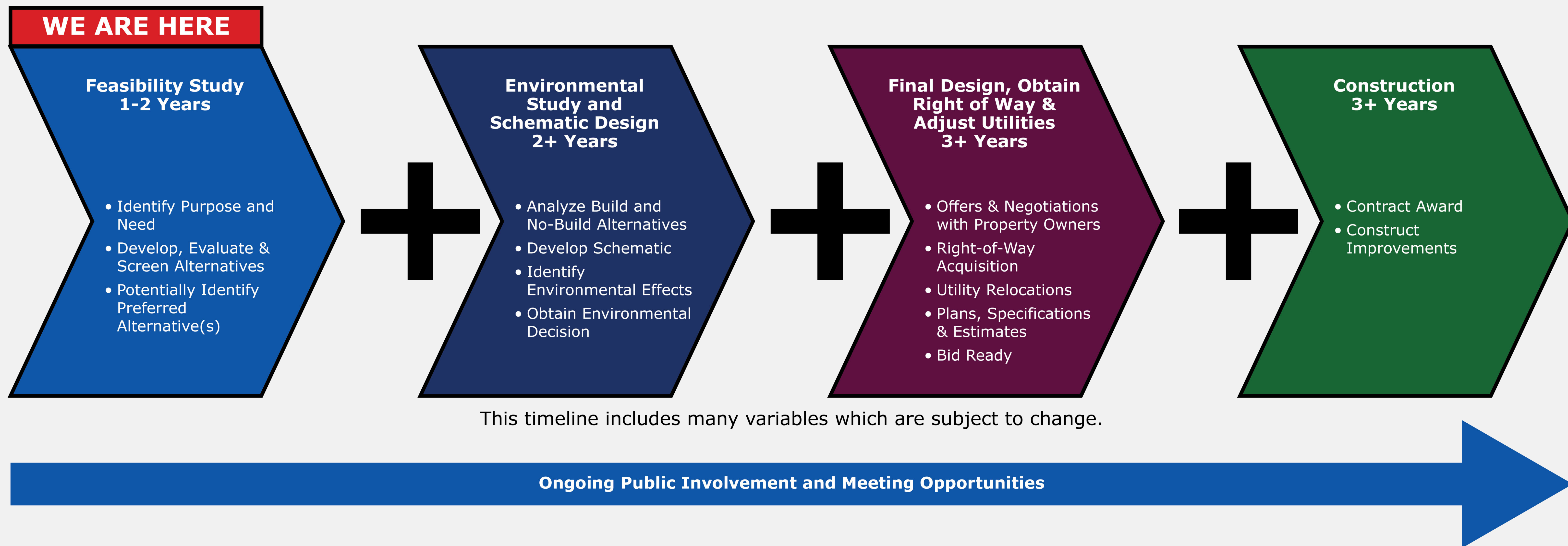
ALTERNATIVE FEATURES AND POTENTIAL IMPACTS		SEALY RELIEF ROUTE ALTERNATIVES		
See notes for an explanation of the terms and basis for impacts used in this table.		Alternative 1	Alternative 2	Alternative 3
<b>ENGINEERING/DESIGN FEATURES</b>				
	Alignment Length (miles)	10.3	9.6	9.9
	Length on Grade (miles)	9.7	8.5	8.9
	Length on Bridge (miles)	0.6	1.1	1.0
	Estimated Proposed ROW Acquisition (ac)	295.4	293.1	278.8
<b>COMMUNITY AND SOCIO-ECONOMIC IMPACTS</b>				
	# of Displaced Residences	0	4	4
	# of Displaced Barns/Sheds/Detached Garages	4	2	7
	# of Displaced Buildings	4	6	11
	# of Residences (Near Miss)	0	1	0
	# of Barns/Sheds/Detached Garages (Near Miss)	0	1	3

# Alternatives Analysis (cont.)

**PRELIMINARY AND SUBJECT TO CHANGE**

ALTERNATIVE FEATURES AND POTENTIAL IMPACTS		SEALY CITY RELIEF ROUTE ALTERNATIVES		
See notes for an explanation of the terms and basis for impacts used in this table.		Alternative 1	Alternative 2	Alternative 3
<b>ENVIRONMENTAL IMPACTS</b>				
	# of Creek / Tributary Crossings	7	5	4
	Proposed Right-of-Way Impact within 100-yr Floodplain (ac)	1.3	49.3	36.0
	Proposed Right-of-way Impact to Open Waters (Ponds & Lakes) (ac)	1.7	0.8	3.3
	Proposed Right-of-Way Impact to Wetlands (ac)	4.6	2.5	3.6
<b>OTHER IMPACTS</b>				
	# of Railroad Crossings (Grade-Separated)	1	3	3
	Public Acceptance (pending public comments)			
<b>PROJECT COST (IN \$ MILLIONS)</b>				
	Estimated Total Costs (\$M)	\$504.8	\$576.7	\$548.1

# Project Development Process



# Feasibility Study Process



This schedule is preliminary and subject to change.

## **Your feedback helps develop solutions**

- How do you feel about the proposed alternatives?
- Do you prefer a specific alternative? If so, why?
- How do you think transportation needs in this area may change over the next 10 to 20 years?
- What other important information would you like the project team to know?

# How to Provide Comments

Your comments and questions are welcome. To submit a comment, please use one of the options below.



## Comment Form

Submit a comment form online or in-person.



## E-mail

Jonathan.Rogers@txdot.gov



## Mail

TxDOT Yoakum District  
ATTN: Jonathan Rogers  
403 Huck St.  
Yoakum, TX 77995



## Online Form

Visit [www.txdot.gov](http://www.txdot.gov), keyword search "Sealy Relief Route"

All comments must be received or postmarked by **Friday, May 22, 2026**, to be included in the public meeting record.