



May 7, 2026

# Sealy Relief Route Feasibility Study

**Austin County, Texas**  
**CSJ: 0187-03-085**

Virtual Public Meeting with In-Person Option

**HELP MAKE TEXAS SAFER FOR EVERYONE**

**DRIVE *like a* TEXAN.**

**Kind. Courteous. Safe.**



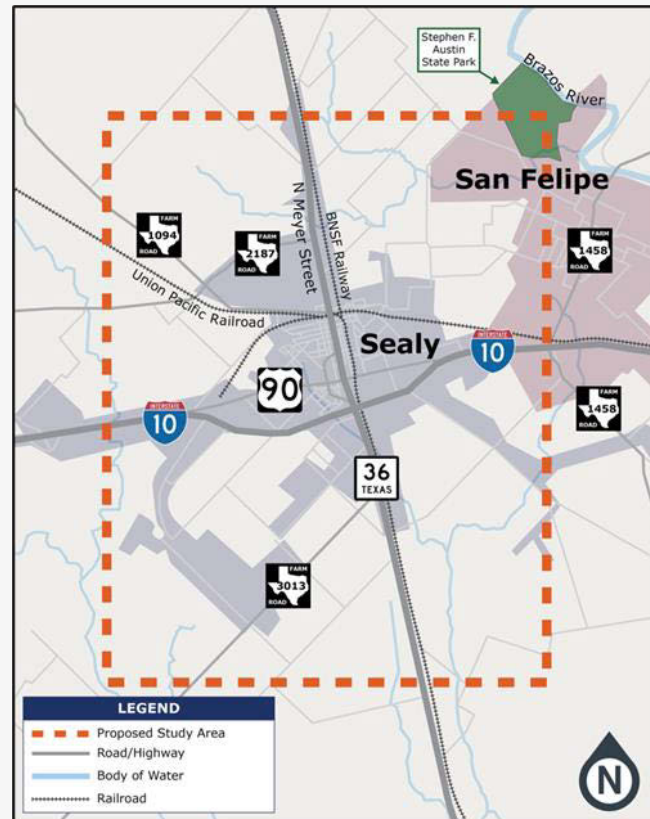
# Table of Contents

- 4** | Study Location and Overview
- 5** | Existing Roadway Characteristics
- 6** | Crash Summary
- 8** | Average Annual Daily Traffic
- 9** | SH 36 Origin and Destination Study
- 10** | What We Heard
- 11** | Environmental Constraints
- 12** | Ultimate Roadway Typical Section
- 13** | Relief Route Alternatives
- 16** | Alternatives Analysis
- 18** | Project Development Process
- 19** | Feasibility Study Process
- 20** | Your Feedback Helps Develop Solutions
- 21** | How to Provide Comments

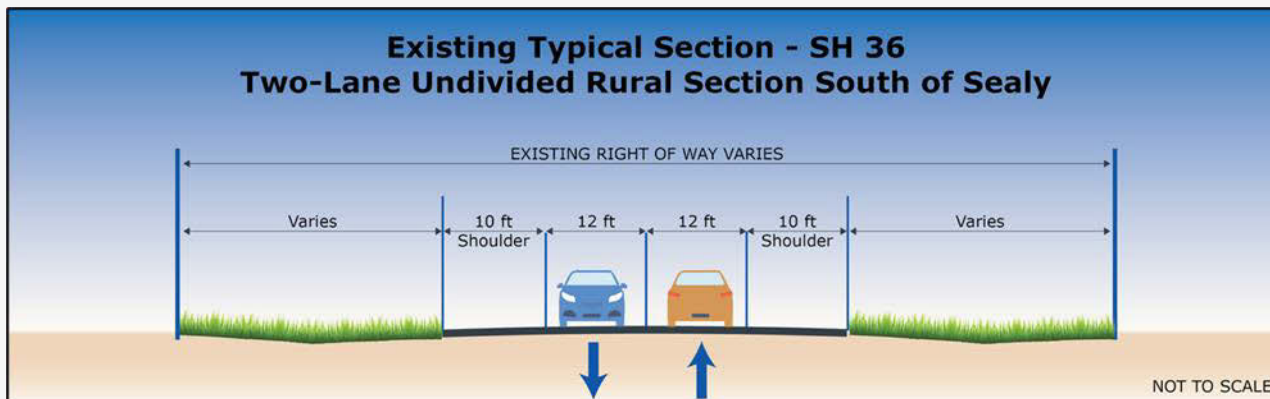
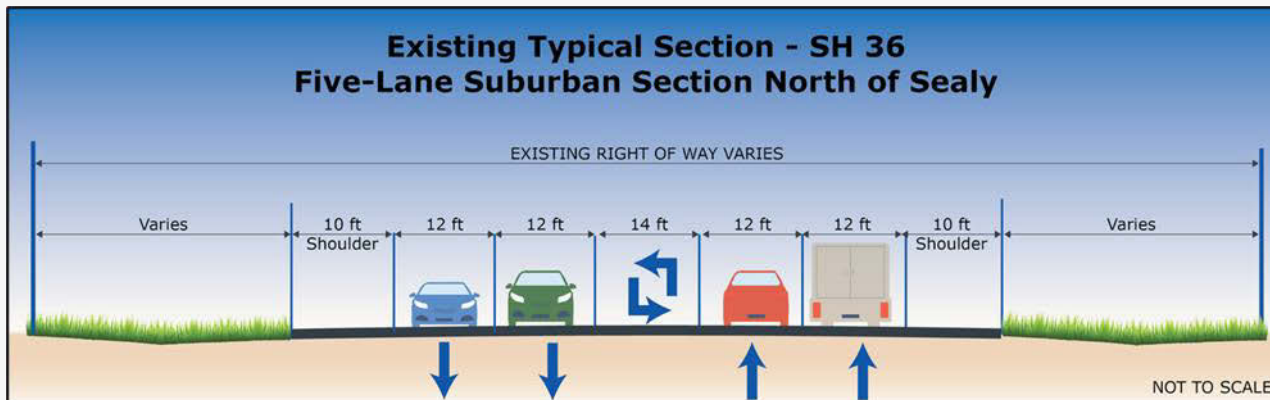
## Study Location and Overview

TxDOT is conducting a feasibility study to explore a potential relief route around the City of Sealy.

The purpose of the relief route is to help reduce congestion, while also improving safety and mobility.



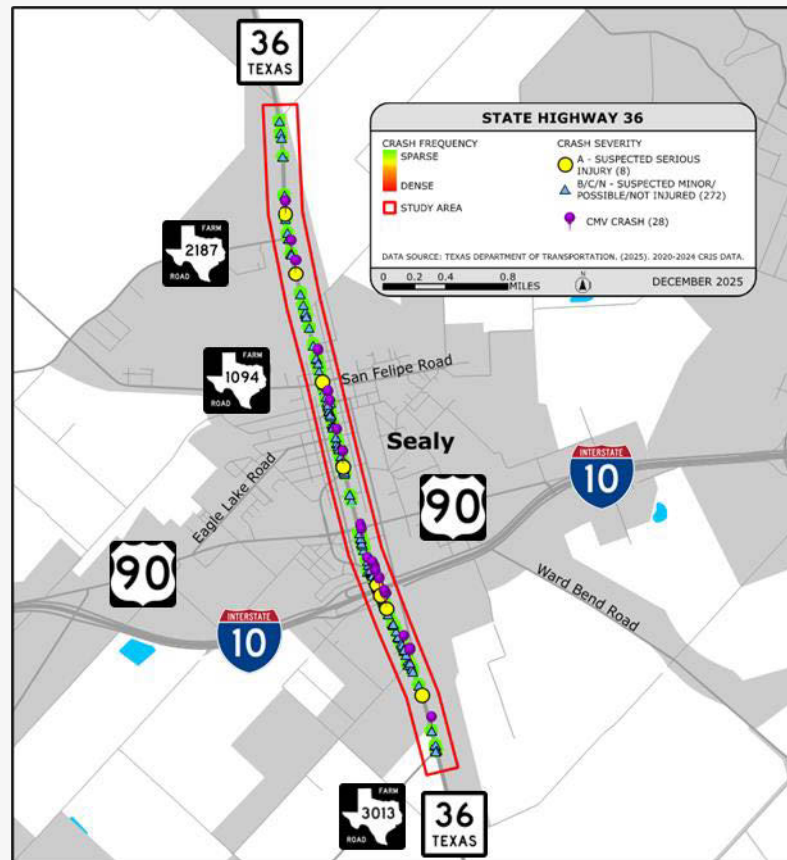
# Existing Roadway Characteristics



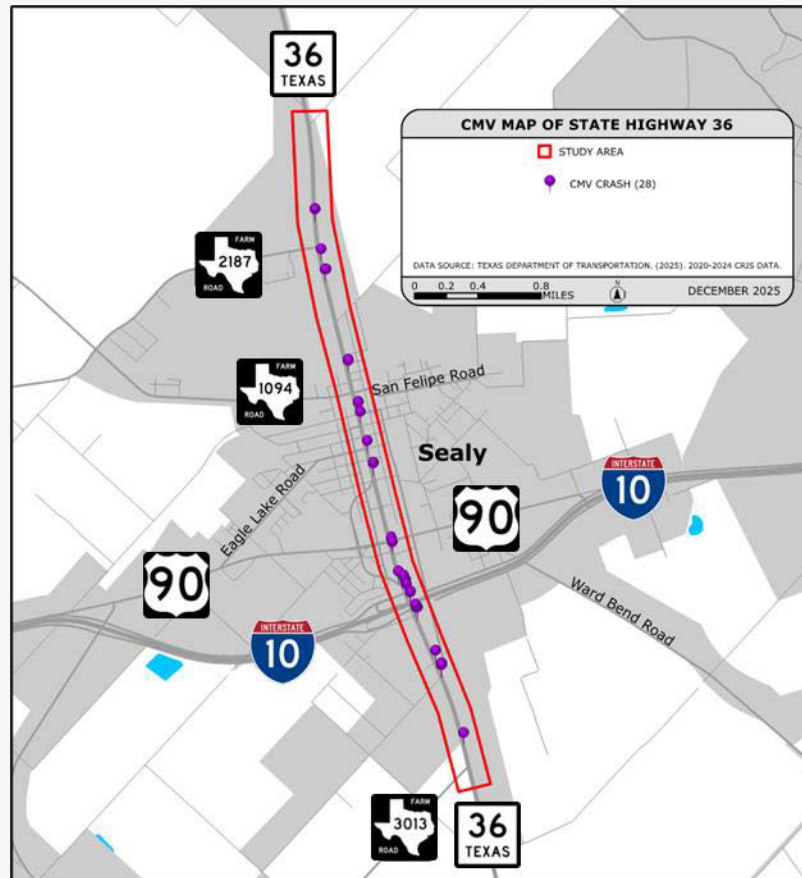
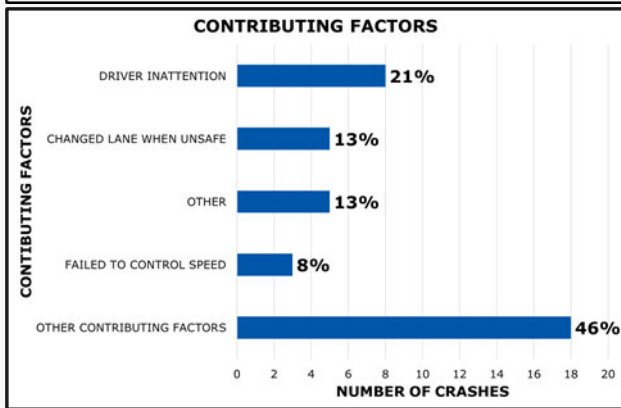
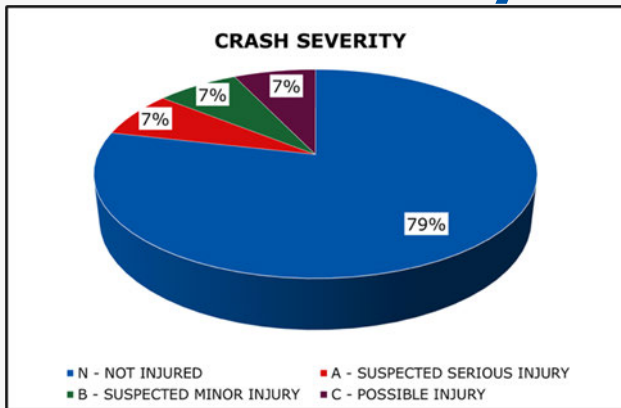
## Crash Summary

- 280 crashes
- No fatal crashes
- 8 suspected serious injury crashes
- 28 involved commercial motor vehicles (CMV)

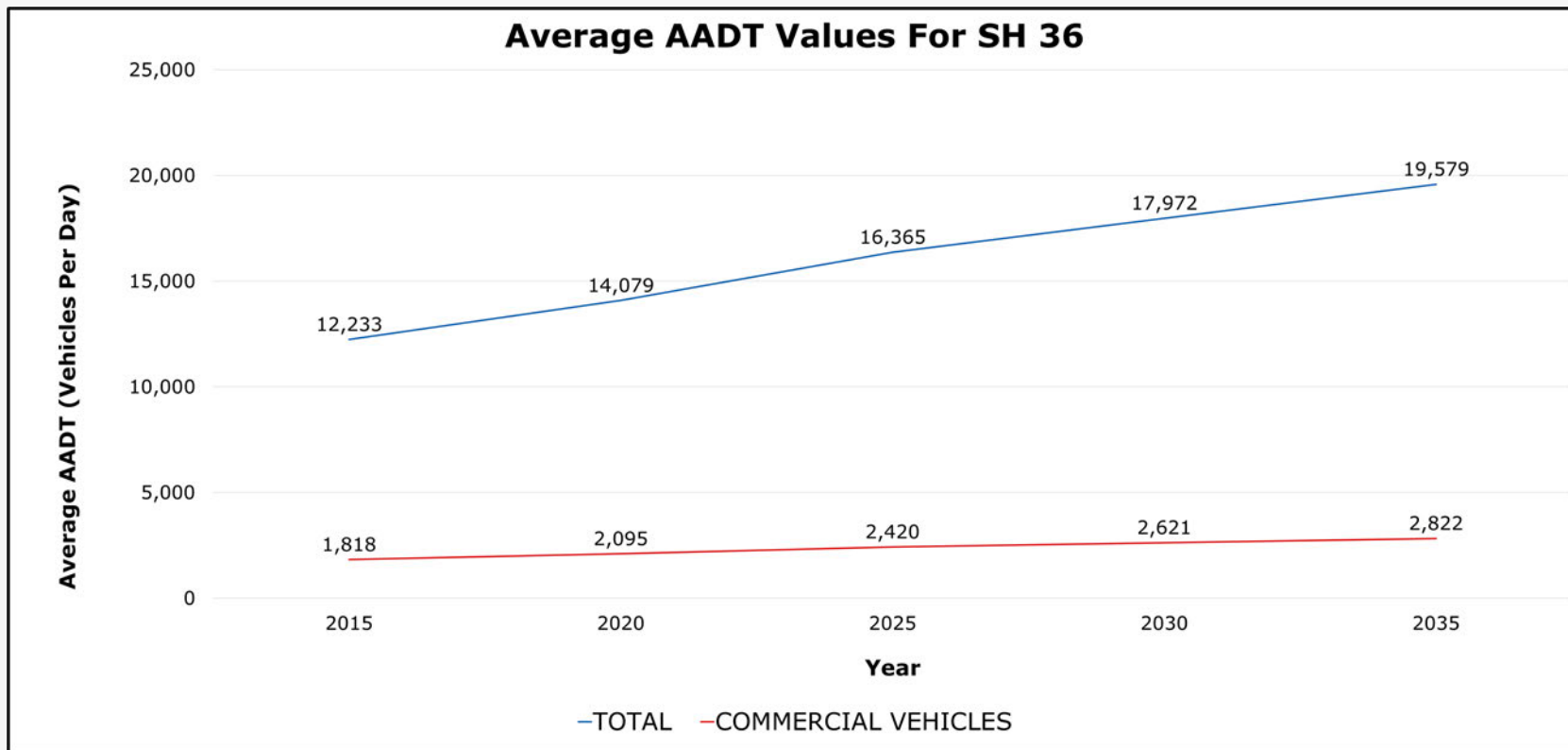
*Data from 2020 to 2024*



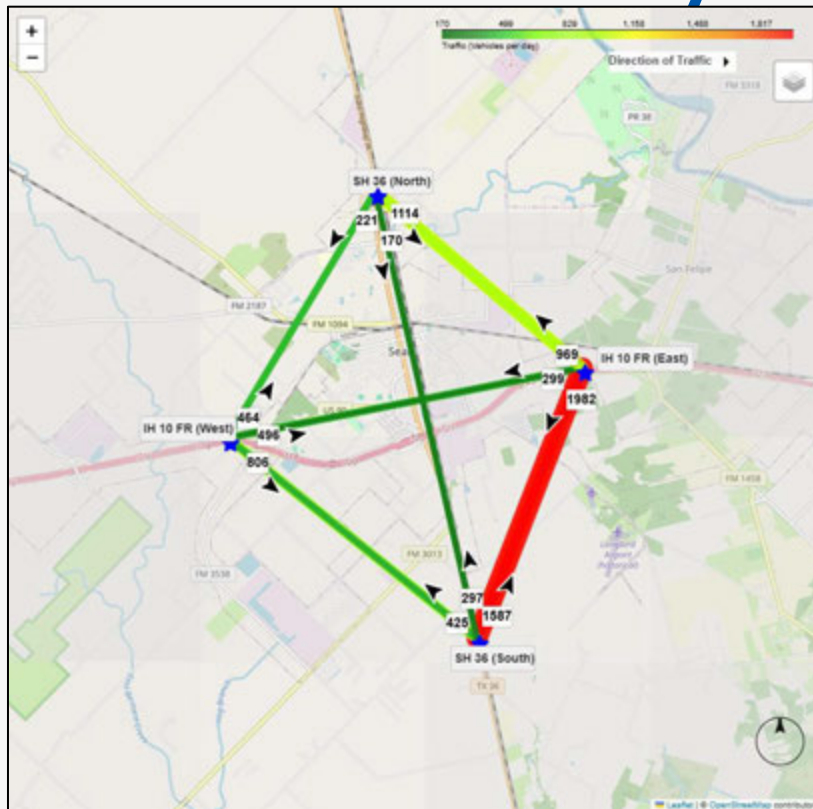
# Crash Summary - CMV



# Average Annual Daily Traffic (AADT)



# SH 36 Origin and Destination Study



## What We Heard

- During the previous public meeting on Jan. 22, 2016, community members provided input on potential solutions to meeting the purpose of the proposed relief route.
- The public also helped to identify their top three issues:
  1. Travel safety and congestion
  2. Truck traffic and/or congestion
  3. Travel lanes and/or left and right turn lanes

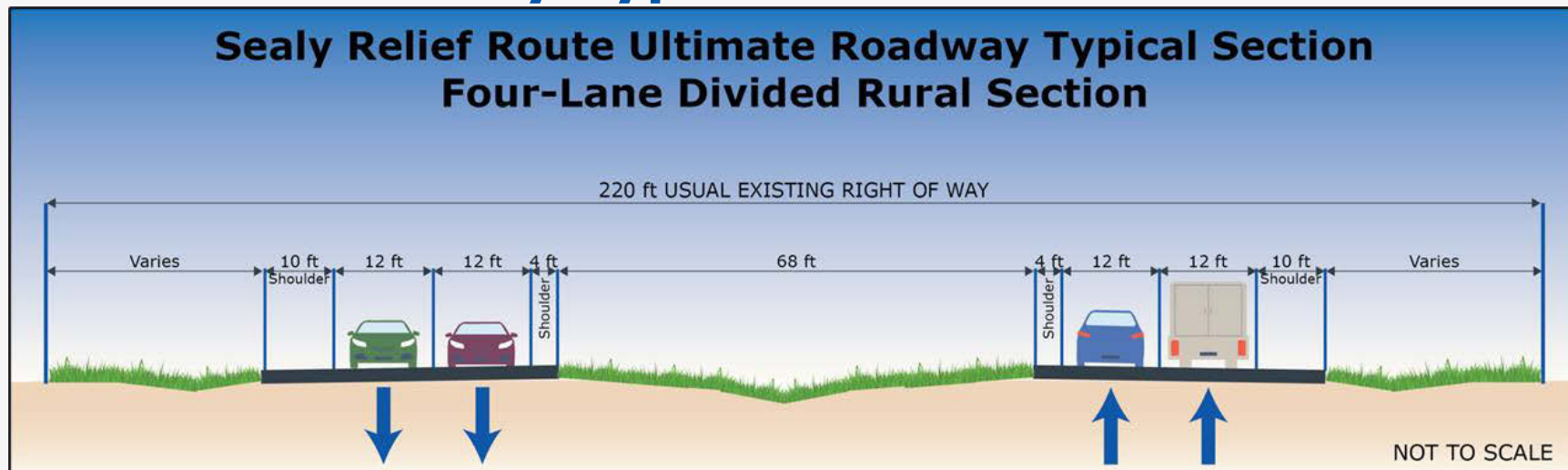


## Study Area Environmental Constraints

- In addition to safety analyses, TxDOT considers environmental features such as biological resources, water resources, historical resources, and community resources when developing solutions.
- This environmental constraints map shows the full study area.

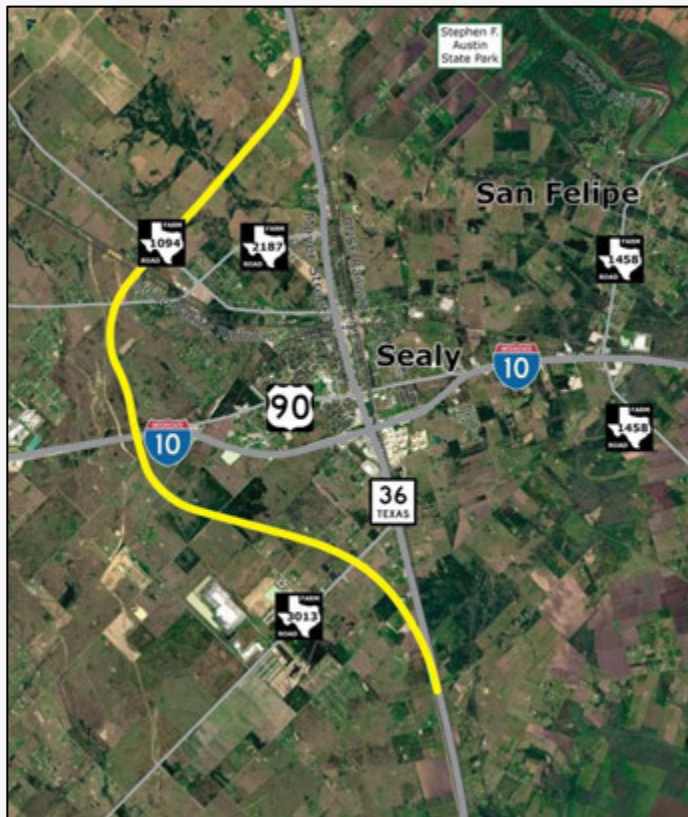


## Ultimate Roadway Typical Section



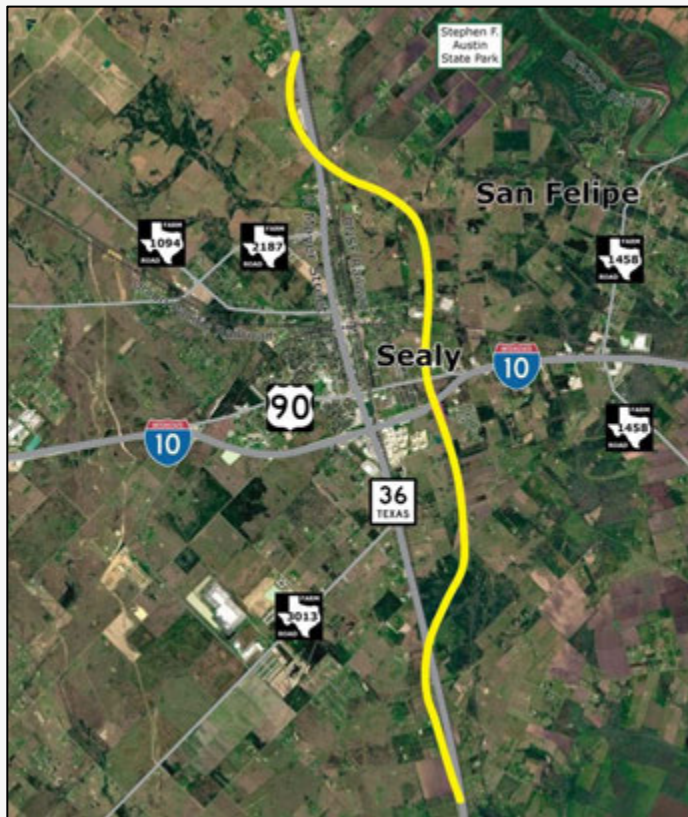
An ultimate roadway typical section would include two 12-foot lanes in each direction with 10-foot outside shoulders and 4-foot inside shoulders. It would also include a depressed grassy median.

# Relief Route Alternative 1



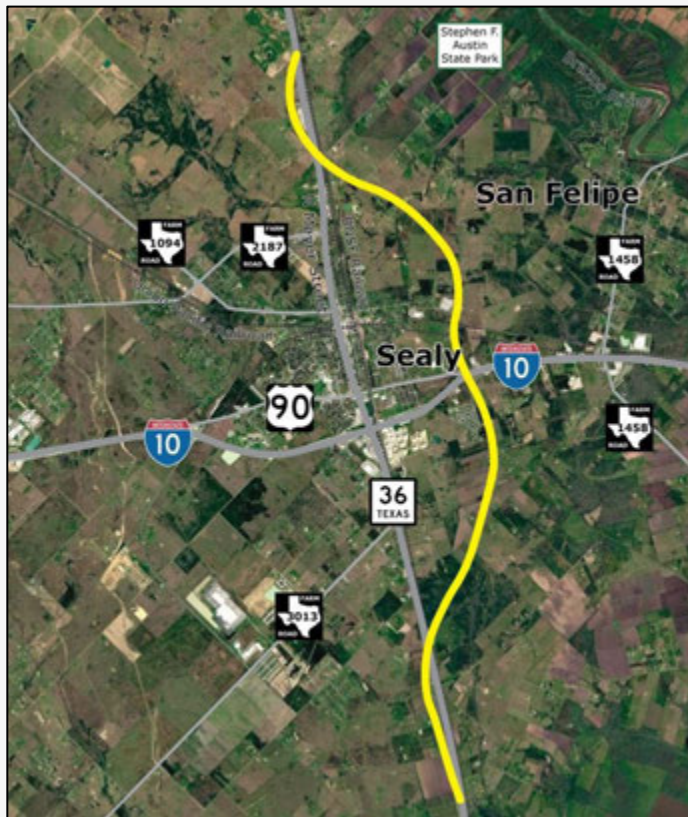
**PRELIMINARY AND  
SUBJECT TO CHANGE**

## Relief Route Alternative 2



**PRELIMINARY AND  
SUBJECT TO CHANGE**



## Relief Route Alternative 3



**PRELIMINARY AND  
SUBJECT TO CHANGE**



# Alternatives Analysis

**PRELIMINARY AND SUBJECT TO CHANGE**

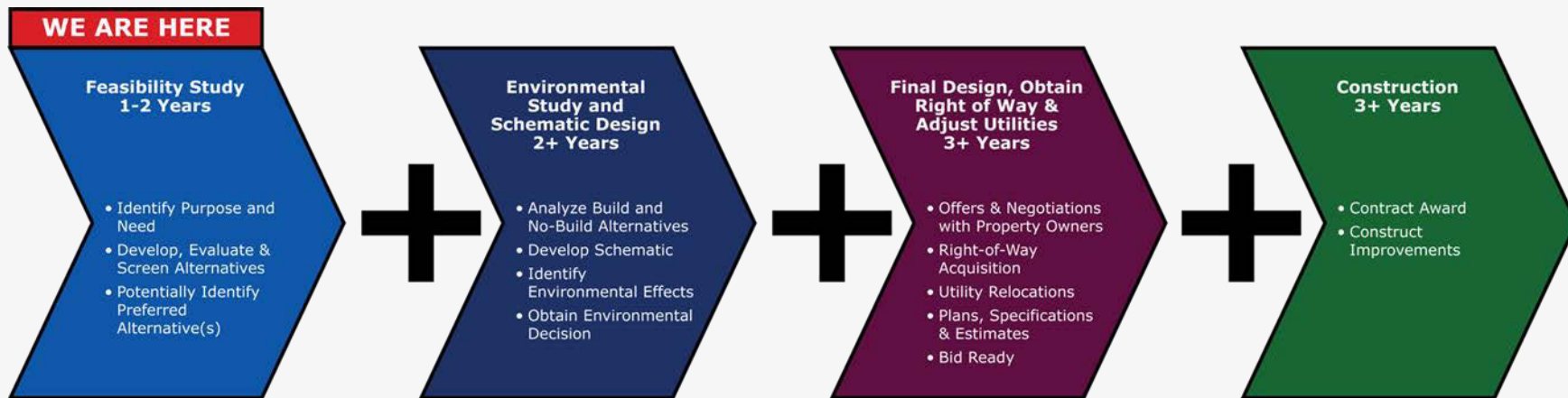
ALTERNATIVE FEATURES AND POTENTIAL IMPACTS		SEALY RELIEF ROUTE ALTERNATIVES		
See notes for an explanation of the terms and basis for impacts used in this table.		Alternative 1	Alternative 2	Alternative 3
<b>ENGINEERING/DESIGN FEATURES</b>				
	Alignment Length (miles)	10.3	9.6	9.9
	Length on Grade (miles)	9.7	8.5	8.9
	Length on Bridge (miles)	0.6	1.1	1.0
	Estimated Proposed ROW Acquisition (ac)	295.4	293.1	278.8
<b>COMMUNITY AND SOCIO-ECONOMIC IMPACTS</b>				
	# of Displaced Residences	0	4	4
	# of Displaced Barns/Sheds/Detached Garages	4	2	7
	# of Displaced Buildings	4	6	11
	# of Residences (Near Miss)	0	1	0
	# of Barns/Sheds/Detached Garages (Near Miss)	0	1	3

# Alternatives Analysis (cont.)

**PRELIMINARY AND SUBJECT TO CHANGE**

ALTERNATIVE FEATURES AND POTENTIAL IMPACTS		SEALY CITY RELIEF ROUTE ALTERNATIVES		
See notes for an explanation of the terms and basis for impacts used in this table.		Alternative 1	Alternative 2	Alternative 3
<b>ENVIRONMENTAL IMPACTS</b>				
	# of Creek / Tributary Crossings	7	5	4
	Proposed Right-of-Way Impact within 100-yr Floodplain (ac)	1.3	49.3	36.0
	Proposed Right-of-way Impact to Open Waters (Ponds & Lakes) (ac)	1.7	0.8	3.3
	Proposed Right-of-Way Impact to Wetlands (ac)	4.6	2.5	3.6
<b>OTHER IMPACTS</b>				
	# of Railroad Crossings (Grade-Separated)	1	3	3
	Public Acceptance (pending public comments)			
<b>PROJECT COST (IN \$ MILLIONS)</b>				
	Estimated Total Costs (\$M)	\$504.8	\$576.7	\$548.1

# Project Development Process



This timeline includes many variables which are subject to change.

Ongoing Public Involvement and Meeting Opportunities

# Feasibility Study Process



This schedule is preliminary and subject to change.

## Your Feedback Helps Develop Solutions

- How do you feel about the proposed alternatives?
- Do you prefer a specific alternative? If so, why?
- How do you think transportation needs in this area may change over the next 10 to 20 years?
- What other important information would you like the project team to know?

## How To Provide Comments

Your comments and questions are welcome. To submit a comment, please use one of the options below.



### Comment Form

Submit a comment form at the in-person meeting.



### Email

Jonathan.Rogers@txdot.gov



### Mail

TxDOT Yoakum District  
ATTN: Jonathan Rogers  
403 Huck St.  
Yoakum, TX 77995



### Online Form

Visit [www.txdot.gov](http://www.txdot.gov), keyword search "Sealy Relief Route" and complete the online comment form.

Comments must be received or postmarked by **Friday, May 22, 2026**, to be included in the official public meeting summary.

# Thank You!