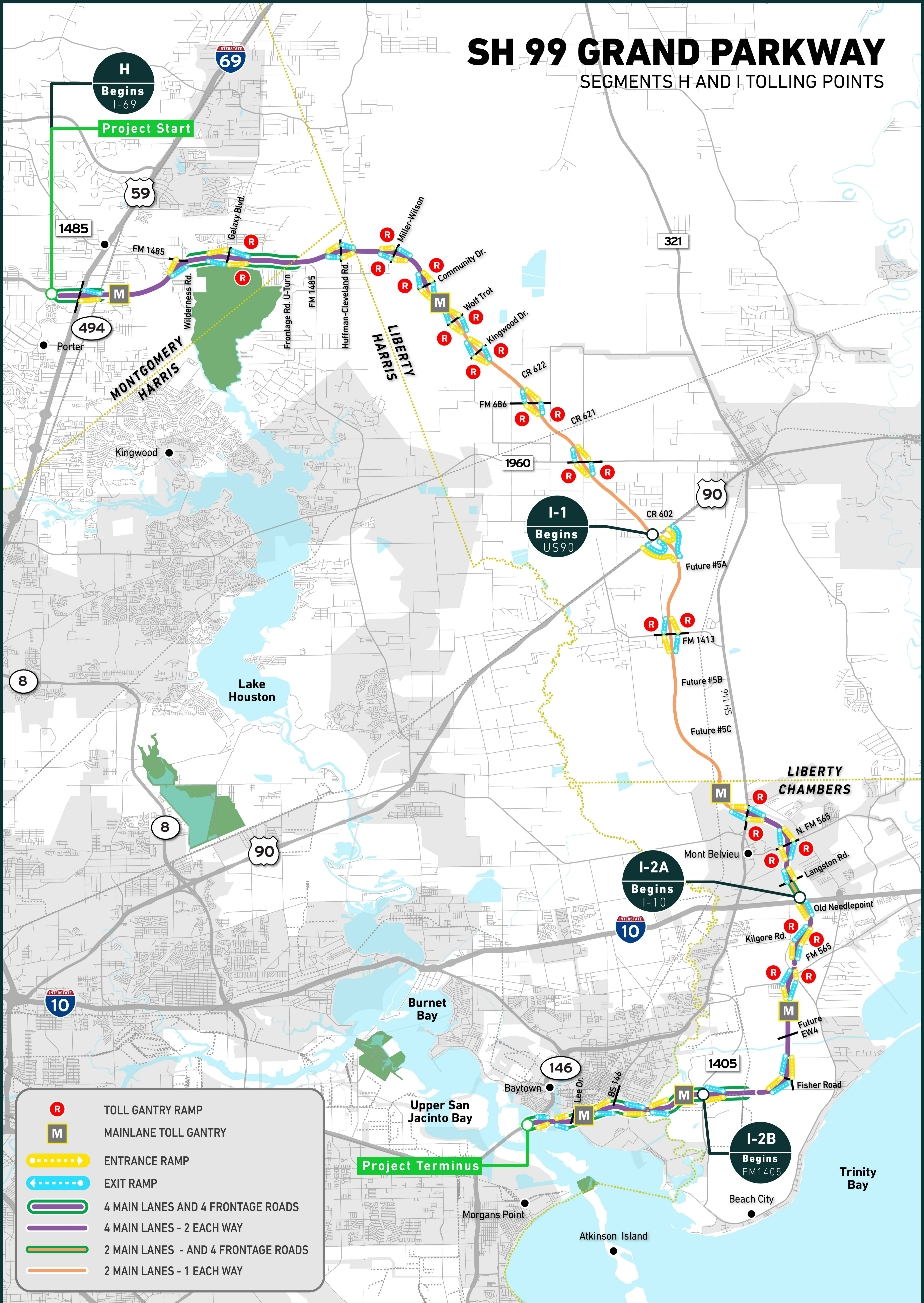


SH 99 GRAND PARKWAY

SEGMENTS H AND I TOLLING POINTS



H Begins
I-69

Project Start

I-1 Begins
US 90

I-2A Begins
I-10

I-2B Begins
FM 1405

	TOLL GANTRY RAMP
	MAINLANE TOLL GANTRY
	ENTRANCE RAMP
	EXIT RAMP
	4 MAIN LANES AND 4 FRONTAGE ROADS
	4 MAIN LANES - 2 EACH WAY
	2 MAIN LANES - AND 4 FRONTAGE ROADS
	2 MAIN LANES - 1 EACH WAY

Project Terminus

NOTE: THE EXHIBIT REPRESENTS FUTURE CONFIGURATION OF SEGMENT H&I AFTER THE COMPLETION OF ONGOING CONSTRUCTION



TEXAS DEPARTMENT OF TRANSPORTATION

MAY, 2022

