



From Warehouses to Front Doors

E-commerce shifts freight from large freight trucks delivering to retail stores to smaller trucks and vans delivering in our neighborhoods.



ECONOMIC IMPACT OF E-COMMERCE IN THE TEXAS TRIANGLE

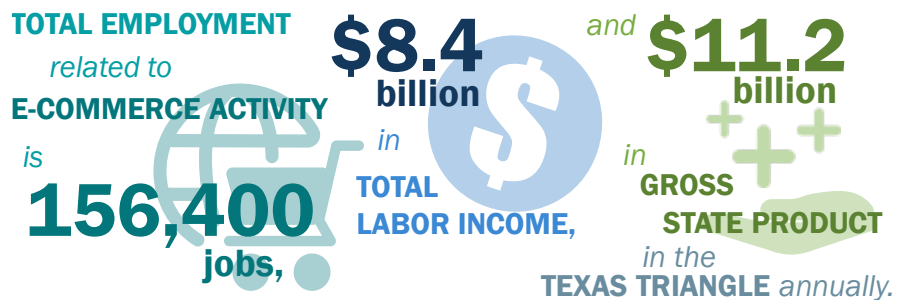
E-Commerce is Growing the Region's Economy

E-commerce refers to the buying and selling of goods over the internet. E-commerce giants like Amazon have led to e-commerce's share of total retail employment increasing and has offset declines in traditional retail jobs in Texas. E-commerce has been a rapidly growing contributor to the Texas economy over the past two decades.

E-Commerce in the Texas Triangle by the Numbers

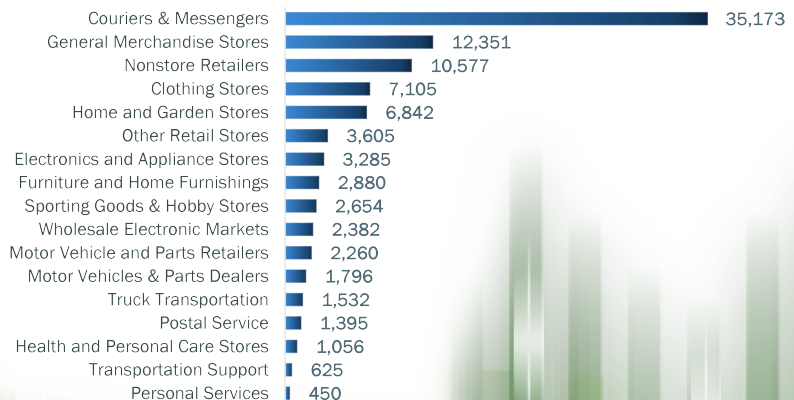
- 95,950 direct jobs making \$4.1 billion in labor incomes annually
- Supported another 60,450 additional jobs making \$4.3 billion in labor incomes annually
- Employment growth of 15 percent in 2018 outpaced the 0.7 percent growth for traditional retail jobs
- Highly concentrated in 5 Triangle counties (Dallas, Harris, Tarrant, Travis, and Bexar), accounting for over 80 percent of the total Gross State Product (GSP) for e-commerce in the region

E-commerce economic activity is important to the Texas Triangle and impacts a wide variety of industries.



E-Commerce is Driving an Increase in Employment in Numerous Sectors

Direct E-Commerce Texas Triangle Jobs





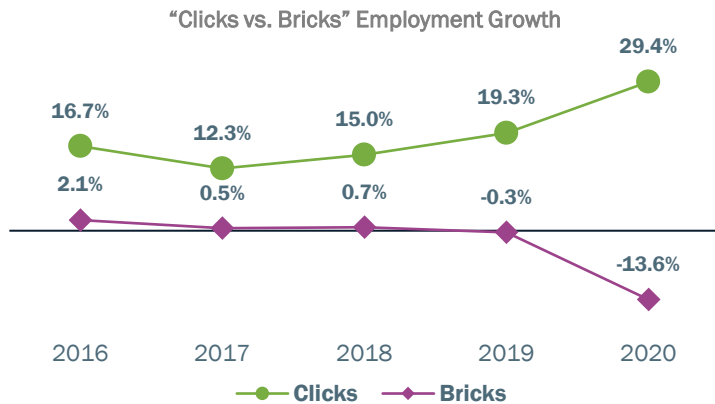
Avenues of Growth

E-commerce activity had a strong multiplier effect across the economy of the Texas Triangle. On average:

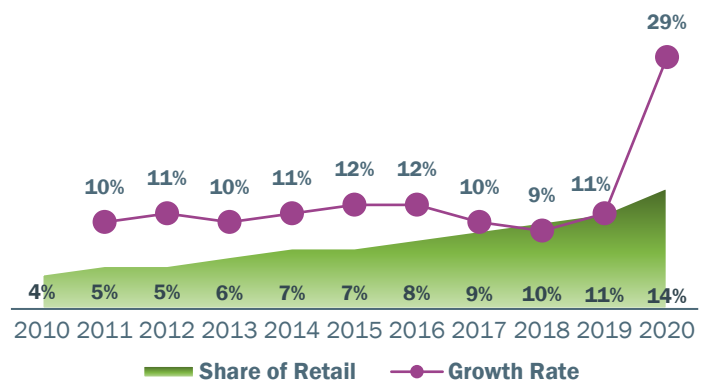
- Every five direct employees resulted in three indirect and induced employees in the region.
- Every dollar spent in direct labor income generated a dollar in indirect and induced labor income.
- Every five dollars of direct GSP generated three additional dollars in indirect and induced GSP.

The information provided comes from the TxDOT *Economic Role of Freight in Texas Study* and represents year 2018.

Texas Retail Sector Employment by Type



E-Commerce National Trends



Transportation Impacts of E-Commerce

As retail sales shift more and more to e-commerce and last-mile delivery modes, the following transportation effects are likely:

- Initial freight moves from manufacturer to warehouses are mostly unchanged.
- Last-mile distribution centers will be located based on access to population within a day.
- These sites will also be situated to efficiently receive inbound goods, typically in full-truckload quantities. Locations with one-day access to mega-freight centers like the Alliance, Texas logistics park which combine access to highway, rail, and air transportation networks will be ideal areas for last-mile operations.
- Dominant parcel carriers will grow their capacity and new entrants will emerge in the last-mile transportation market, including delivery-on-demand.
- Parcel carriers will continue to expand and grow in line with e-commerce growth.

Sherry Pifer

✉ sherry.pifer@txdot.gov

☎ 512-460-1727

Kale Driemeier

✉ kale.driemeier@txdot.gov

☎ 512-649-6825

