

CALHOUN PORT AUTHORITY

219 Diebel Ln, Point Comfort, TX 77978

Charles R. Hausmann, Port Director

www.calhounport.com

Foreign Trade Zone: FTZ-155

Government Representatives:

US House: TX-27 TX Senate: SD-18 TX House: HD-43

Michael Cloud (R) Lois Kolkhorst (R) J.M. Lozano (R)



Breakbulk Port



Bulk Port



Energy Port



Port Description

First established in 1965, the Calhoun Port Authority plays supports Texas chemical manufacturing industries. Its public deep draft dock was designed to handle a break bulk, liquid bulk, and dry bulk carriers up to 750-feet in length. The main types of cargo handled at the port include chemicals, petrochemicals, crude oil, and agricultural fertilizer, which are exported internationally. The Matagorda Ship Channel is also widely used by the commercial fishing industry.

Intermodality

- **Road:** Highway connections to US 59, US 87, SH 35, and SH 172
- **Rail:** Point Comfort & Northern Railway short line railroad to Union Pacific
- **Barge:** 19-mile sailing distance to GIWW
- **Air:** Nearby regional airports
- **Pipeline:** Connections available

Annual Truck Traffic  34,000	Annual Rail Cars  300	Direct Jobs  3,800
---------------------------------------------------------------------------------------------------------------------------	----------------------------------------------------------------------------------------------------------------------	-------------------------------------------------------------------------------------------------------------------

Other Highlights

Calhoun Port Authority is actively engaged in deepening and widening the Matagorda Ship Channel from 38 to 47 feet and expanding its services to support crude oil and condensate transportation. The project has had limited federal funding allocated as of 2022, but the port has entered into a private-public partnership with Max Midstream to begin construction.

The port recently completed a reconstruction of its truck staging area at the south end of FM 1593. Calhoun Port Authority is currently working to add infrastructure, including three new liquid docks, a new 12-inch pipeline, and potential future expansion of its short line railroad.

Port Facilities

Docks & Wharves

- 3 liquid cargo docks
- 1 dry bulk dock
- 1 cargo dock
- 1 multi-purpose dock
- 1 barge fleeting dock

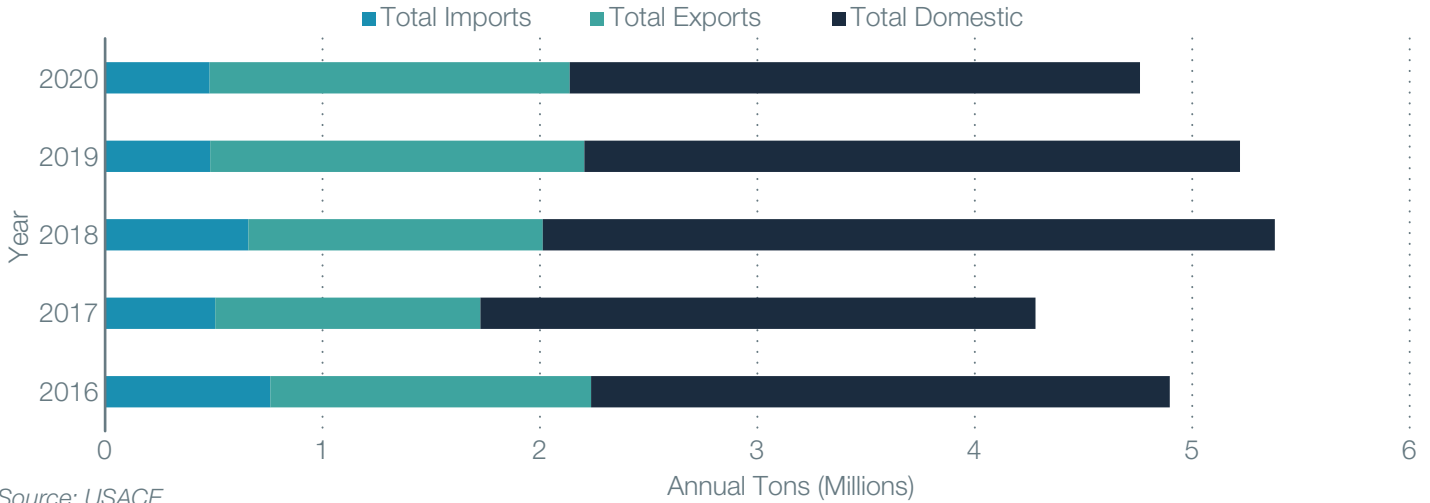
Cargo Handling

- Multiple liquid cargo loading arms
- Pipe rack capabilities
- Spiral dry bulk conveyor unloading tower
- Cargo outloading conveyor



CALHOUN PORT AUTHORITY

Tonnage



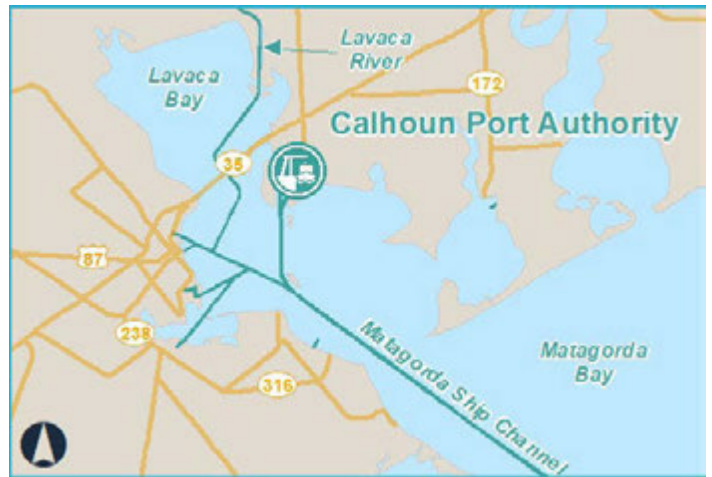
Major Commodities

EXPORTS

- Fertilizers and Chemicals
- Petroleum and its Products
- All Manufactured Equipment, Machinery and Products

IMPORTS

- Fertilizers and Chemicals
- Primary Manufactured Goods
- All Manufactured Equipment, Machinery and Products
- Petroleum and its Products



Capital Improvement Projects

Port Capital Projects

- New Barge Fleeting Area
- South Peninsula Development - Liquid Docks 2 and 3



Port Access Improvement Grants from TxDOT

- South End of FM 1593 (\$77,000)
- FM 1593 Rehabilitation (\$3.87 million)
- FM 1593 Improvements (\$2 million)

Ship Channel Information

Ship Channel Name: Matagorda Ship Channel

Current Depth: 38 feet

Authorized Depth: 47 feet

Projects: Matagorda Ship Channel Improvement Project (federally authorized, 25.8% funded)

