

# PORT OF ANAHUAC

211 Miller St, Anahuac, TX 77514

Claudia Sandoval, General Manager

[www.clcnd.org/](http://www.clcnd.org/)

Foreign Trade Zone: FTZ-171

## Government Representatives:

US House: TX-36 TX Senate: SD-4 TX House: HD-23

Randy Weber Sr (R) Brandon Creighton (R) Dade Phelan (R)



Other



## Port Description

The Chambers-Liberty Counties Navigation District, established in 1944, is the sole owner of the Port of Anahuac. The district is 470,000 acres in size and stretches from the northern boundary of Liberty County to the southern boundary of Chambers County. The primary purpose of the district is to provide navigation capabilities for municipalities and agricultural producers that use the district's raw water supply. The Port of Anahuac offers a 32-mile sailing distance to the GIWW.

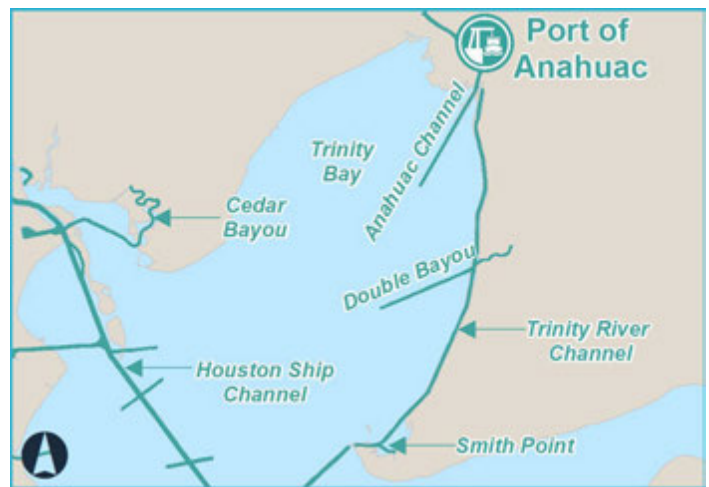
## Key Features

The district includes five shallow draft navigation channels:

- Cedar Bayou Channel
- Trinity River Channel to Liberty, TX
- Anahuac Channel
- Double Bayou Channel
- Smith Point Channel

## Other Highlights

The most used channels for the district include Cedar Bayou Channel, which services the chemical and aggregate industries, Double Bayou Channel, which services the offshore marine and commercial fishing industries, and Smith Point Channel, which services commercial fishing and marine maintenance facilities. The district's channels are also highly utilized for sport fishing and recreational fishing and boating. The district continues to expand and develop additional marine facilities to promote ecotourism and commercial marine economic development. There is no active traffic into and out of the port at this time.



## Ship Channel Information

**Ship Channel Name:** Anahuac, Cedar Bayou, Double Bayou, Trinity River to Liberty, and Smith Point channels

**Current Depth:** 6 ft to 10 ft (varies)

**Authorized Depth:** 6 ft to 11 ft (varies)

**Projects:** Lower 3 miles of Cedar Bayou Channel maintained by USACE with the District as the local sponsor

