

PORT OF PALACIOS

1602 Main St, Palacios, TX 77465

Victor Martinez, Jr., Port Director

www.portofpalacios.com

Foreign Trade Zone: FTZ-62

Government Representatives:

US House: TX-22 TX Senate: SD-17 TX House: HD-30

Troy E. Nehls (R) Joan Huffman (R) Geanie Morrison (R)



Commercial
Fishing Port



Other

Port Description

The Port of Palacios is a multi-use, shallow draft commercial and recreational port. Formed in 1940 to promote commercial and recreational fishing, the Port of Palacios maintains a navigable waterway while protecting the coastal environment. Shrimping has been a signature market in the Palacios region since 1922. The port also provides safe harbor for boats traversing the Gulf Intracoastal Waterway to Palacios.

Intermodality

- **Road:** Highway connection to SH 35
- **Barge:** 16-mile sailing distance to GIWW (M-10, M-69)
- **Rail:** None
- **Air:** 2.5 miles from the Palacios Municipal Airport
- **Pipeline:** None

Other Highlights

The Port of Palacios has made recent improvements to the port that include adding a mobile paint building for barges, new fabrication and welding platforms, and a new barge launch platform. These facilities will help the Port of Palacios provide ship repairs for a large shrimp fleet, ferries, tugboats, barges, and commercial and recreational vessels.

The harbor consists of four turning basins containing over 12,500 feet of well-maintained bulkhead dock. Cargo capabilities at the port include servicing TxDOT ferries, shrimping, and supporting Texas's energy and manufacturing industries. Emerging markets for the port include bulk cargo transportation and manufacturing and fabrication of tugboats and barges.

Port Facilities

Docks & Wharves

- 6 cargo docks
- Over 900 acres of land for lease
- Two shipyards for repair, retrofit, fabrication, and dry dock

Palacios Fishing Harbor

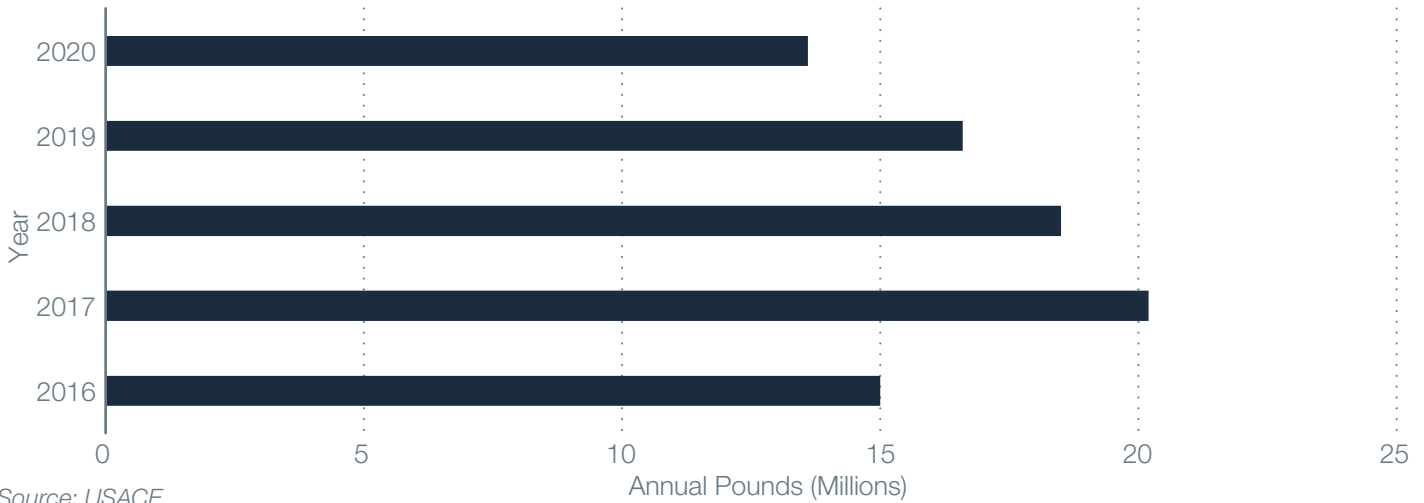
- 200 boat shrimp fleet
- 12,500 feet of bulkhead dock

Emerging Markets

- Bulk cargo transportation
- Manufacturing and fabrication of tugboats and barges

PORT OF PALACIOS

Commercial Fishing



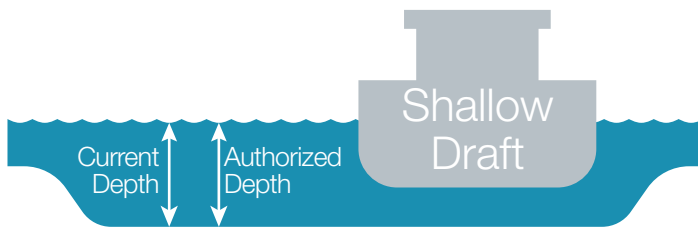
Ship Channel Information

Ship Channel Name: Palacios Channel

Current Depth: 14 feet

Authorized Depth: 14 feet

Projects: Port of Palacios Turning Basin Expansion Project Feasibility Study (federally authorized, 0% funded)



Capital Improvement Projects

Port Capital Projects

- Truck Queuing Areas
- Various Turning Basin Adjacent Projects

\$6.06 MILLION
from TxDOT

Connectivity Projects

- SH 35 Safety/Operational Improvements
- Port Access Facility Improvement Truck Queuing Area on New Road to Matagorda Navigation District

Port Access Improvement Grants from TxDOT

- Landbridge on Business SH 35 (\$2.32 million)
- Richman Road (\$1.28 million)
- Holsworth Road Rehabilitation (\$756,700)
- SH 35 Improvements (\$1.70 million)

