



Utility Accommodation Rules (UAR)

Utility Week: General Session 2022

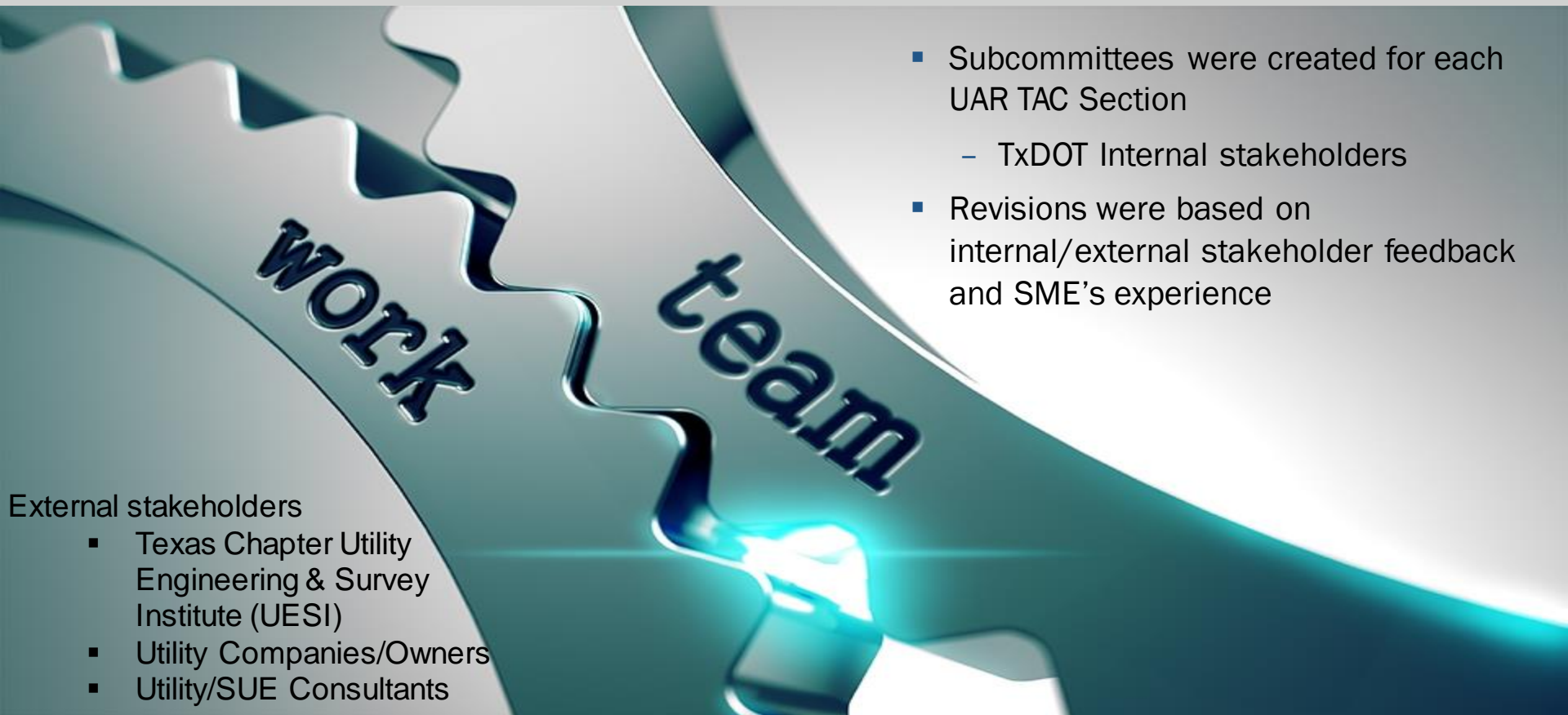


Table of contents



1	Overview	3 - 5
2	Amendments	6 - 12
3	Comments	13 - 18
4	Broadband Accommodation Process (BAP)	19 - 28
5	Moving Forward	29





- Subcommittees were created for each UAR TAC Section
 - TxDOT Internal stakeholders
- Revisions were based on internal/external stakeholder feedback and SME's experience

- External stakeholders
- Texas Chapter Utility Engineering & Survey Institute (UESI)
 - Utility Companies/Owners
 - Utility/SUE Consultants



The following sections were revised to reflect modernization in technology, construction techniques, materials, and safety.

21.31 Definitions

21.37 Design

21.38 Construction and Maintenance

21.40 Underground Utilities

21.41 Overhead Utilities



Utility's installation plans based on survey data provided by a Texas RPLS.

- Protecting the public's investment in the state highway system
 - Ensuring utilities are installed in their designated locations.
 - Improperly installations led to costly delays

Feedback from Industry/Solution:

- Continue to allow use of TxDOTs survey data and established references.



Utilities to verify the right of way line

- Instances where the utility encroached into adjacent property.
 - Mitigates the risk of mis-identifying the limits of the ROW.

Feedback from Industry/Solution:

- ROW Maps are available
- Additional survey needed for rare occasions.

§21.40 – Underground Utilities

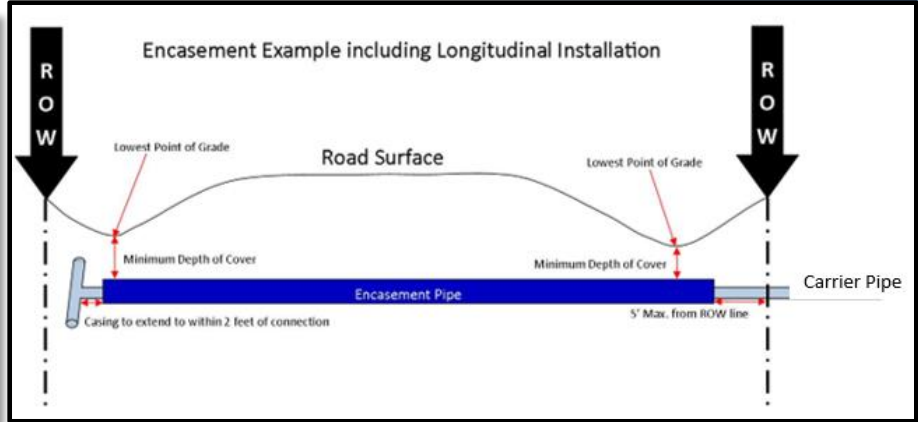


Table 21.40-1 Underground Utilities - Minimum depth (inches)

Facility Type	Crossing Encased	Crossing un-encased	Longitudinal ²	Casing Material (Recommended)
Low Pressure Gas	60	60	48	HDPE or Steel
High Pressure Gas ¹	60	60	48	Steel
Electric	60	NA	48	Any
Communication	60	NA	48	Any
Water	60	NA	36	HDPE
Wastewater gravity flow	30	NA	30	HDPE
Wastewater pressure flow	60	NA	36	HDPE
Other Water	60	NA	36	HDPE

Crossing depth is below lowest point of crossed grade.

(1) High pressure gas is defined as greater than or equal to 60 psi.
 (2) Additional 12 inches of depth is required within 50 feet of water course, culvert, etc.



- Addressed department requirements for underground utilities.
 - Simplified encasement requirements
 - Provided new minimum depths
 - Added installation methods
 - Added joint duct banks for underground communication lines

§21.40 Underground (g) Underground Comm Lines (1)



Where a department joint duct bank is available:

- a utility shall install a utility facility in the duct bank
- unless otherwise authorized by the district.

Feedback from Industry/Solution:

- High demand for use of the department's right of way
- Manage demand
- Reduce infrastructure costs
- TxDOT will determine when department owned duct banks are used.





Utility Accommodation Rules

For utility plans, as part of reimbursable agreements:

Completed plans will not be required to conform with the revisions

Case by case basis on other instances

Advice: work with district and ROW Division

Permits that have already been submitted for review may be exempted by the District.

